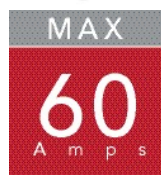


# EXTREME HIGH-POWER 60 A SYSTEMS

## FEATURES & BENEFITS

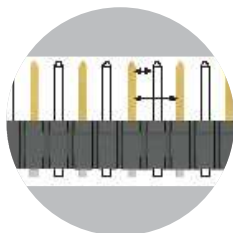
- Up to 60 A per power blade (2 blades powered)
- Split Power Option: 30 A/30 A for a total of 60 A
- Low 10 mm profile (right-angle) for enhanced system airflow
- Power only, or power/signal combinations
- 3 or 5 signal rows in the same form factor
- AC power, DC power, power/signal combinations and split power options available
- Coplanar and perpendicular solutions supporting mid-board or backplane applications
- Modules can be configured to accommodate most any design
- Rugged guide posts are standard; top design for board space savings
- Press-fit (ET60S only) and hot swap (ET60T only) options available



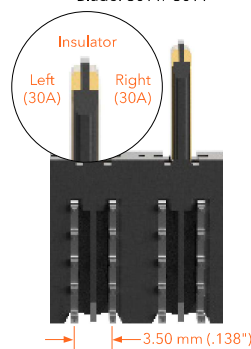
**Standard Creepage\*** 3.02 mm

**Standard Clearance\*** 1.87 mm

\*Selectively loading contacts achieves customer specific creepage and clearance requirements.  
Contact [asp@samtec.com](mailto:asp@samtec.com)



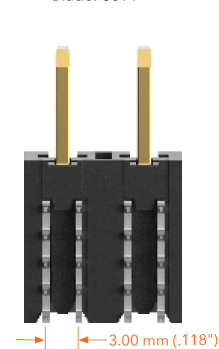
**SPLIT POWER**  
8 mm (.315") pitch  
Blade: 30 A / 30 A



**DC POWER**  
5.50 mm (.217") pitch  
Blade: 60 A



**AC POWER**  
7.50 mm (.295") pitch  
Blade: 60 A



BOTTOM VIEW

## KEY SPECIFICATIONS (ET60T/ET60S)

	PITCH	INSULATOR MATERIAL	TERMINAL MATERIAL	PLATING	OPERATING TEMP RANGE	CURRENT RATING	VOLTAGE RATING	MATING CYCLES	LEAD-FREE SOLDERABLE
Power	(5.50 mm) .217" (DC) (7.50 mm) .295" (AC) (8.00 mm) .315" (SP)	Black LCP	Signal: Phosphor Bronze Power: Copper Alloy	Au or Sn over 50 µ" (1.27 µm) Ni	-40 °C to +105 °C	60 A (Power Pin) 30A/30 A (Split Power) 3.3 A (Signal Pin)	300 VAC/ 424 VDC	500	Yes
Signal	(2.00 mm) .097" (5 row) (2.54 mm) .100" (3 row)								

### Notes:

Some lengths, styles and options are non-standard, non-returnable.

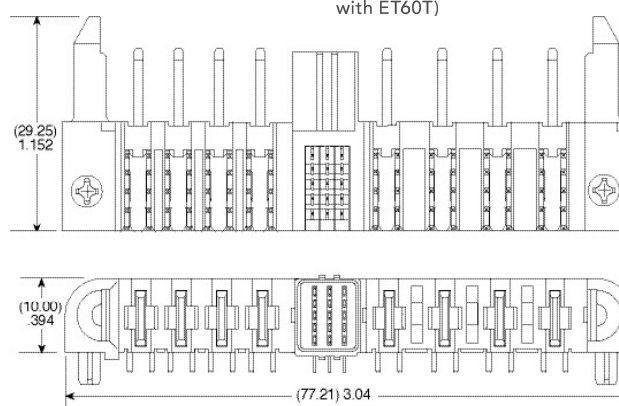
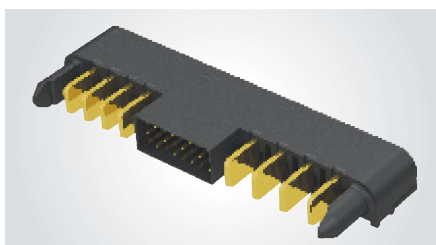
\*EXTreme Ten60Power™ is a trademark of Molex Incorporated and is dual sourced by Molex®

## 60 A SIGNAL/POWER COMBO SYSTEM

SERIES	POWER OPTION (R)	ROWS	SIGNAL POS. PER ROW	POWER OPTION (L)	PLATING	TAIL	GUIDE POST	OPTION
<b>ET60T</b> Terminal	<b>-AXX</b> = AC Power Positions (02 - 06)	<b>-0</b> = No Signal	<b>-00</b> = No Signal	<b>-AXX</b> = AC Power Positions (02 - 06)	<b>-L</b> = 10 $\mu$ " (0.25 $\mu$ m) Gold on contact, Matte Tin on tail (Not available for 5 rows)	<b>-R1</b> = Right-angle Through-hole (Use with (1.60 mm) .062" thick card)	(Required callout)	(Leave blank for no hot swap)
<b>ET60S</b> Socket	<b>-DXX</b> = DC Power Positions (02 - 10)	<b>-3</b>	<b>-08</b> = 3 Row only	<b>-DXX</b> = DC Power Positions (02 - 10)		<b>-VP</b> = Vertical Press-fit (Not available with ET60T)	<b>-S</b> = Side Guide Post	<b>-H</b> = Hot Swap (ET60T only)
	<b>-SXX</b> = Split Power (01 - 03)	<b>-5</b>	<b>-01, -02, -03, -04, -05, -06, -07, -08</b> = 5 Row only	<b>-SXX</b> = Split Power (01 - 03)		<b>-V1</b> = Vertical Through-hole (Use with (1.60 mm) .062" thick card) (-0 and -3 Row only) (Not available with ET60T)	<b>-T</b> = Top Guide Post (Not available with -SXX)	
	<b>-000</b> = No Power			<b>-000</b> = No Power				

### ET60T

Board Mates:  
ET60S

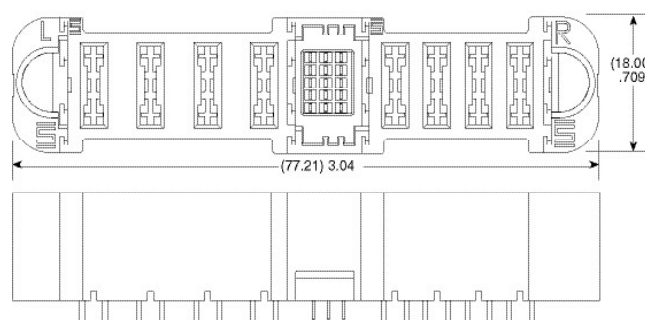
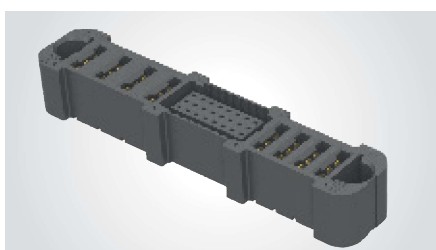


ET60T-D04-5-03-A04-X-R1-S SHOWN

View complete specifications at: [samtec.com?ET60T](http://samtec.com?ET60T)

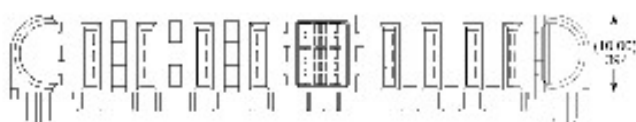
### ET60S

Board Mates:  
ET60T



VERTICAL

ET60S-D04-5-03-A04-X-VP-S SHOWN



RIGHT-ANGLE

ET60S-D04-5-03-A04-X-R1-S SHOWN

View complete specifications at: [samtec.com?ET60S](http://samtec.com?ET60S)