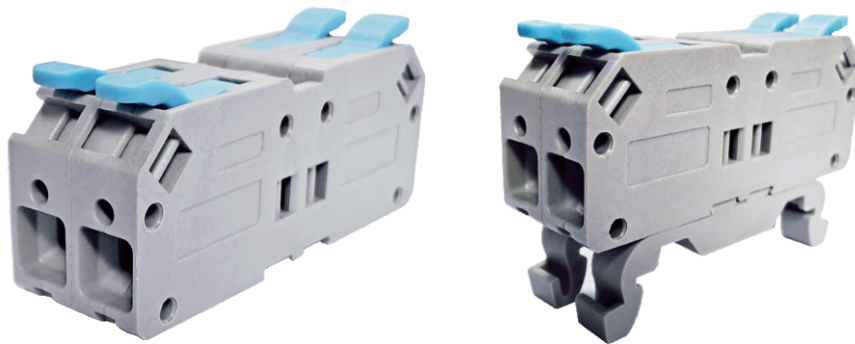


# DIN Rail With Lever Terminal Blocks

Amphenol  
ANYTEK

INDUSTRIAL@AMPHENOL  
TRUSTED GLOBALLY

## New Products

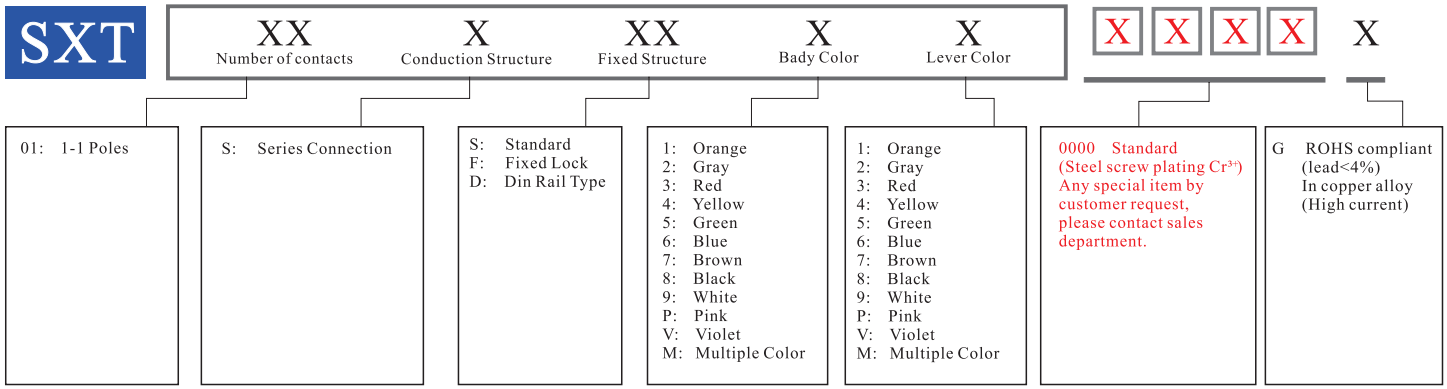


### **SXT Series** Standard / Fixed Lock / Din Rail Type

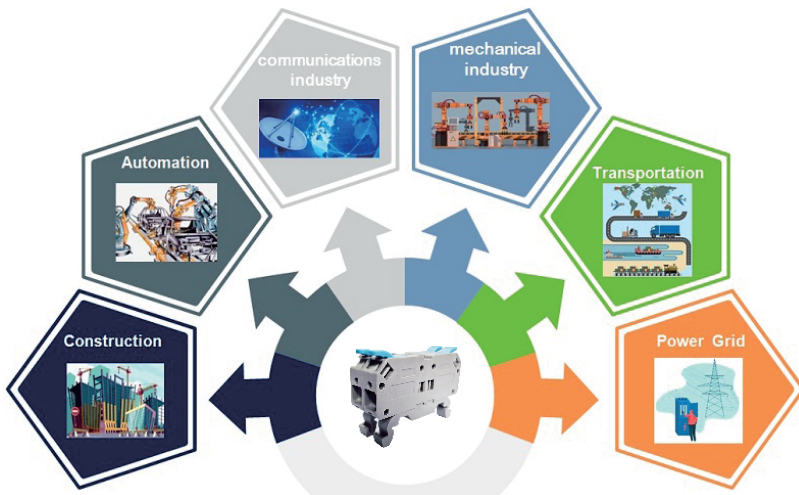
- Tool-free, quick, and safe wire connection with simple lever action.
- Lever indicates wire connection status for secure placement.
- Widely used in industrial, building and household electrical systems.
- Clamping mechanism ensures secure, stable connections for long-term reliability.

### Electrical

Rated Parameters	cULus
Product Model	SXT
Pitch	7.5mm
Poles	1-10P
Voltage Rating	300V
Current Rating	30A
Solid Wire	20-10 AWG
Stranded Wire	20-10 AWG
Withstanding Voltage	1.6KV
Wire Strip Length	15-16mm
Safety Approval	cULus
Standard Colors	



### Application Scenarios



- Power Grid
- Mechanical
- Transportation
- Communication
- Automation
- Construction