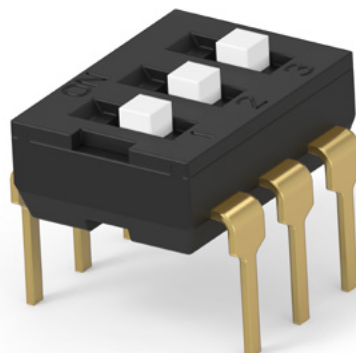


INTRODUCING

ALCOSWITCH NEXT GENERATION DIP SWITCH – ADE & ADF SERIES

- Raised (extended) or recessed (flush) for design flexibility
- Through-hole & surface mounted



TE Connectivity's (TE) ALCOSWITCH Next Gen. DIP switch ADE and ADF series are designed for space-saving and streamlined manufacturing with high contact pressure allowing for aqueous cleaning without the need for tape sealing.

The ADE and ADF series are available in through-hole and surface mount options. Style of actuators are based on series: ADE with extended actuators, ADF with flush actuators. ADE/ ADF are available in both tube and tape/reel packaging options.

BENEFITS

- Raised (extended) or recessed (flush) for design flexibility.
- Through-hole & surface mounted.
- Extremely high contact pressure system allows aqueous or solvent cleaning without tape seal.
- Gold contact plating for high reliability and corrosion resistance.
- Tape and reel packaging available for quick pick-and-place assembly.

KEY FEATURE

- Better space management because of low profile design, 30% smaller in size compared to conventional dip switches available in market.
- Sliding type contact ensures better performance and higher reliability when compared to conventional seesaw type contact.

APPLICATIONS

- Industrial and automated control boards
- Fire and security systems
- Thermostats
- Elevator/Escalator
- Telecommunication devices

LEARN MORE

- [Next Gen DIP switch landing page](#)
- [Next Gen DIP switch partlist](#)
- [Next Gen DIP switch datasheet](#)
- [Next Gen DIP switch product images](#)