

# Smallest Sealed Glass Trimmers S Series



The PC17 styles are the only vertically mounted glass trimmers in MIL-PRF-14409.

Voltronics “S” Series are up to 40% shorter with 25% more range than any other sealed standard glass RC. trimmers. The use of Voltronics’ unique non-rotating piston design provides linear tuning, high “Q”, long life, and high self-resonant frequencies. The O-ring seal assures protection up to 40 p.s.i. against dust, moisture, flux, solder, and cleaning solvents.

FIGURE 1

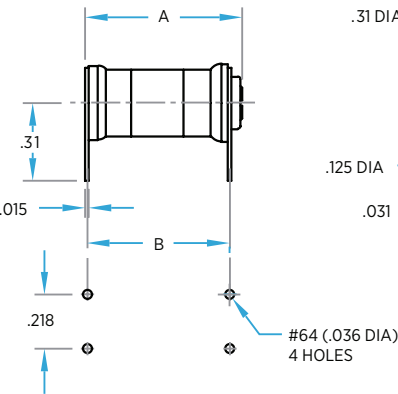


FIGURE 2

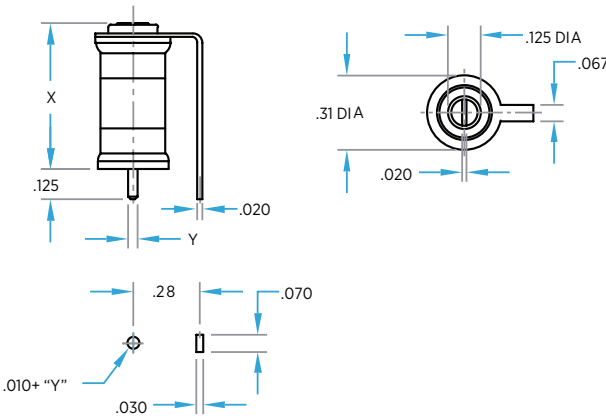
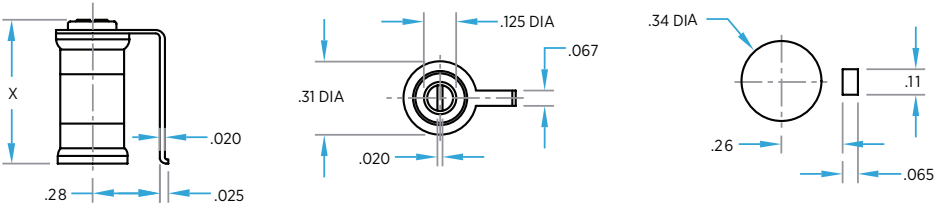


FIGURE 3



Dielectric	Capacitance Range (pF)		Q (Min.) at 1 MHz	Horizontal Mount Figure 1			Vertical Mount* Figure 2		Surface Mount Figure 3	
	From Below	To Above		Type	A ± .06	B ± .03	Type	X ± .03	Type	X ± .03
EMBEDDED BAND GLASS	1.5	10	800	SP10	.370	.300	SF10A	.340	SM10	.340
	1.5	20	800	SP20	.440	.370	SF20A	.410	SM20	.410
	1.5	30	800	SP30	.520	.450	SF30A	.490	SM30	.490
	1.5	40	800	SP40	.630	.560	SF40A	.600	SM40	.600

\*“Y” dimension-standard - .040”. For non-standard, change “A” in type number to “B” for .063” or “C” for .093”.  
 \*SF styles available with dual leads from top similar to AF styles on page 19.

General specifications on page 42 apply except:

1. DC Working Voltage: 250
2. Tuning torque: 0.5 to 5 inch ounces
3. Tolerance: XXX ± .005