



Pumpkin i500 – Bring-up Guide

This is a guide to bring up a Pumpkin Pi Rev A or B.

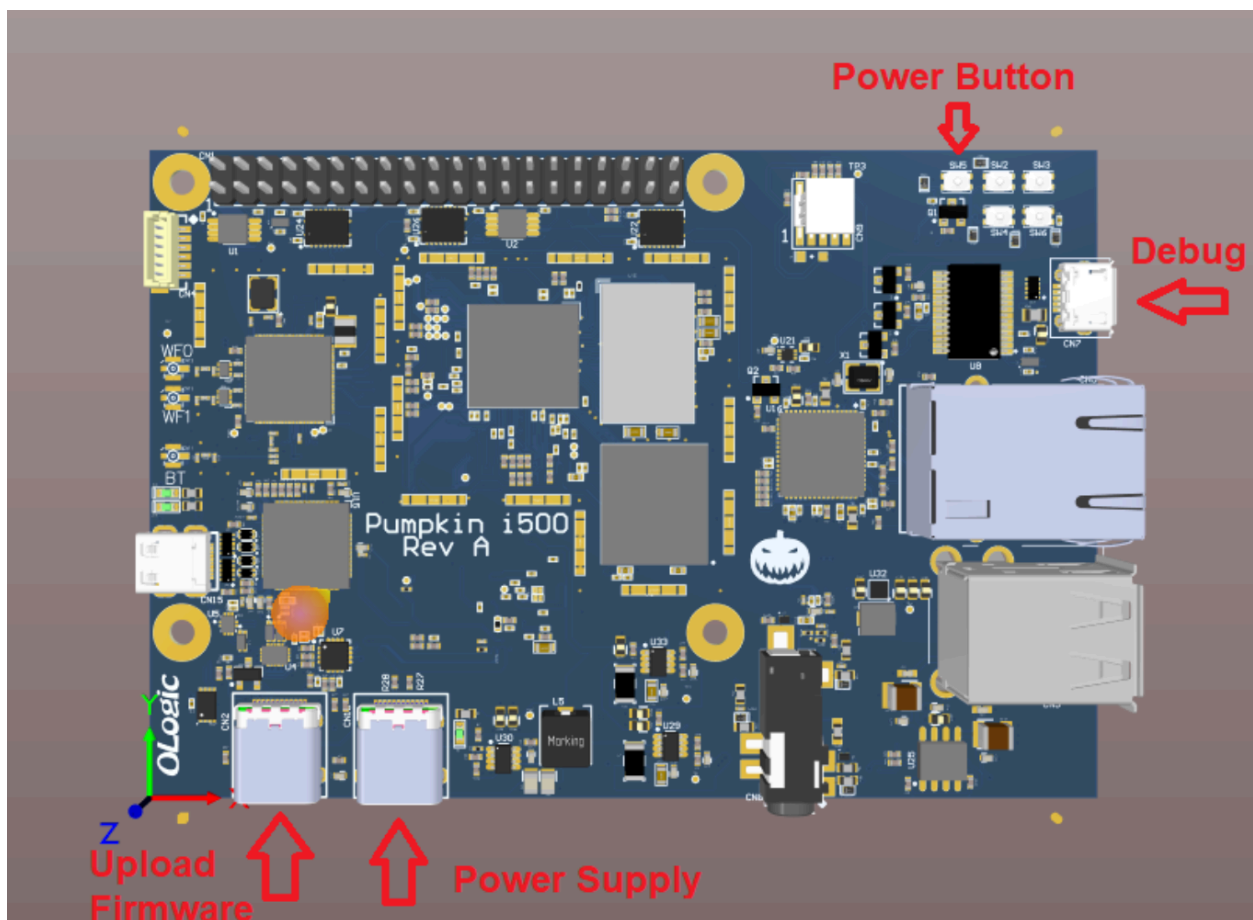


Figure 1 - Pumpkin Pi i350

Items you will need: Pumpkin Pi Loading Boot Images

1. Laptop with Putty or similar serial monitor
2. 5V2A USB charger + USB Type-C Cable to power the Pi
3. USB micro-B cable for UART Debug

Note: This Bring-Up Guide assumes the Pumpkin Pi board has Yocto Linux pre-loaded on it. If you need to load a Linux image on the board, you will need to follow the instructions for loading Boot Images.

Bring-up Connecting from Windows Host:

Step 1:

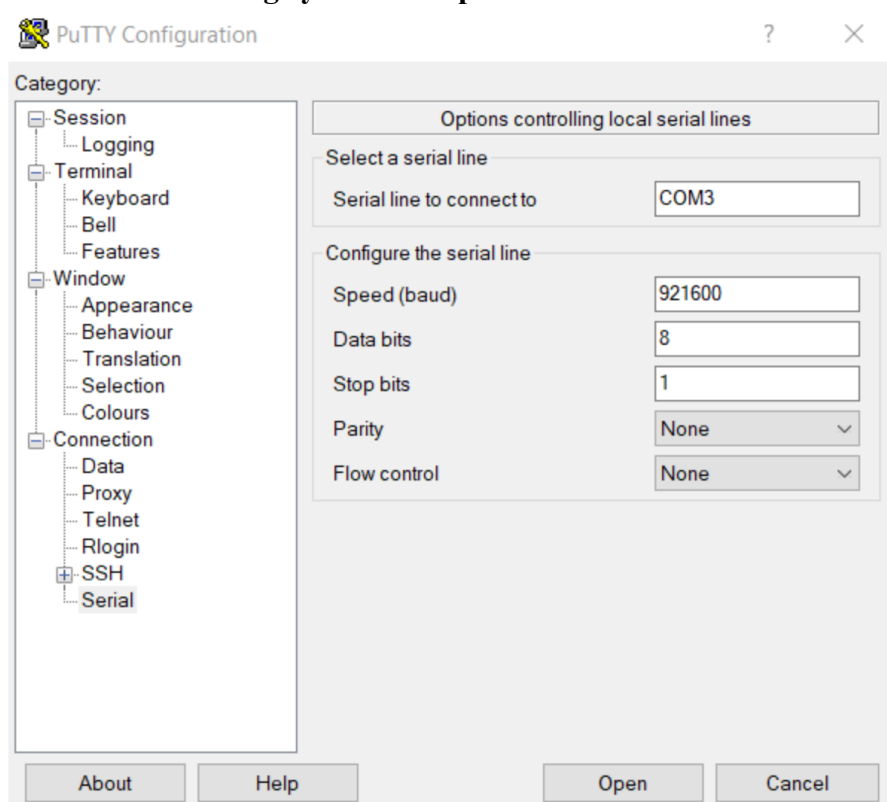
- Connect the micro USB cable from your laptop to the debug header on the Pumpkin Pi. **See Figure 1.**
- Connect a 5V2A USP Type-C cable to the power connector. **See Figure 1.**

Step 2:

- Open device manager (windows) press windows key > type in “device manager”. Once you are in device manager go down to “Com ports” and verify the correct port.

Step 3:

- Open Putty and select a serial connection. Set the connection to the following settings, **be sure to change your COM port number to the correct one from Device Manager.**



Step 4:

- Press the power button “SW5” See **Figure 1**.

Step 5:

- You should see the device boot up on the com port.
- Login as username: root
- no password.

Bring-up Connecting from Linux Host:

Step 1:

- Connect the micro USB cable from your laptop to the debug header on the Pumpkin Pi. See **Figure 1**.
- Connect a 5V2A USP Type-C cable to the power connector. See **Figure 1**

Step 2:

- Open Linux Console Window

Step 3:

Launch minicom using `sudo minicom -s` to begin configuring the serial port.

Configure the `Serial port setup` with the following settings:

```
1 Port: /dev/ttyUSB0
2 Speed (Baud): 921600 - 8-data bits - no parity
3 Flow Control: none
```

Configure the `Screen and keyboard` with the following settings:

```
1 P - Add linefeed      : Yes
2 Q - Local echo        : Yes
3 R - Line Wrap         : Yes
4 S - Hex Display       : No
5 T - Add carriage return : Yes
```

You can then `Save setup as dfl` to create a default setup and exit from minicom.

You can then launch minicom with `sudo minicom` and connect to the pumpkin.

Step 4: Power

- Press the power button “SW4” See **Figure 1**.

Step 5:

- You should see the device boot up on the com port.
- Login as username: root
- no password.