

MicroMod Wi-Fi Function Board – DA16200

WRL-18594

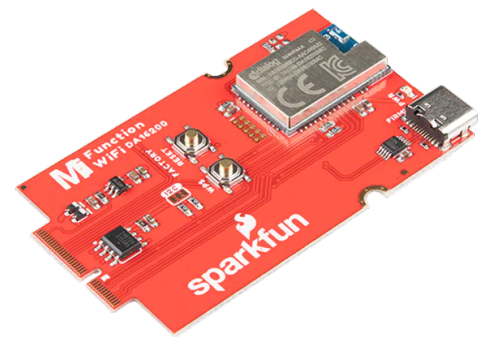
Product Overview

10/17/2022

For the most up-to-date information, visit www.mouser.com or the supplier's website.

Description

SparkFun MicroMod DA16200 Wi-Fi Function Board adds a fully integrated Wi-Fi module certified Wi-Fi alliance for IEEE802.11b/g/n, Wi-Fi direct, and WPS functionalities. This board features a 40MHz crystal oscillator, 32.768KHz RTC, lumped RF filter, 4MB flash memory, and on-board chip antenna for any MicroMod project. The MicroMod Wi-Fi function board also features 2 UARTs, 3.5 μ A sleep current, 2.1V to 3.6V operating voltage range, and three ultra-low power sleep modes. This board is ideal for MicroMod projects involving door locks, thermostats, sensors, pet trackers, and home IoT projects.



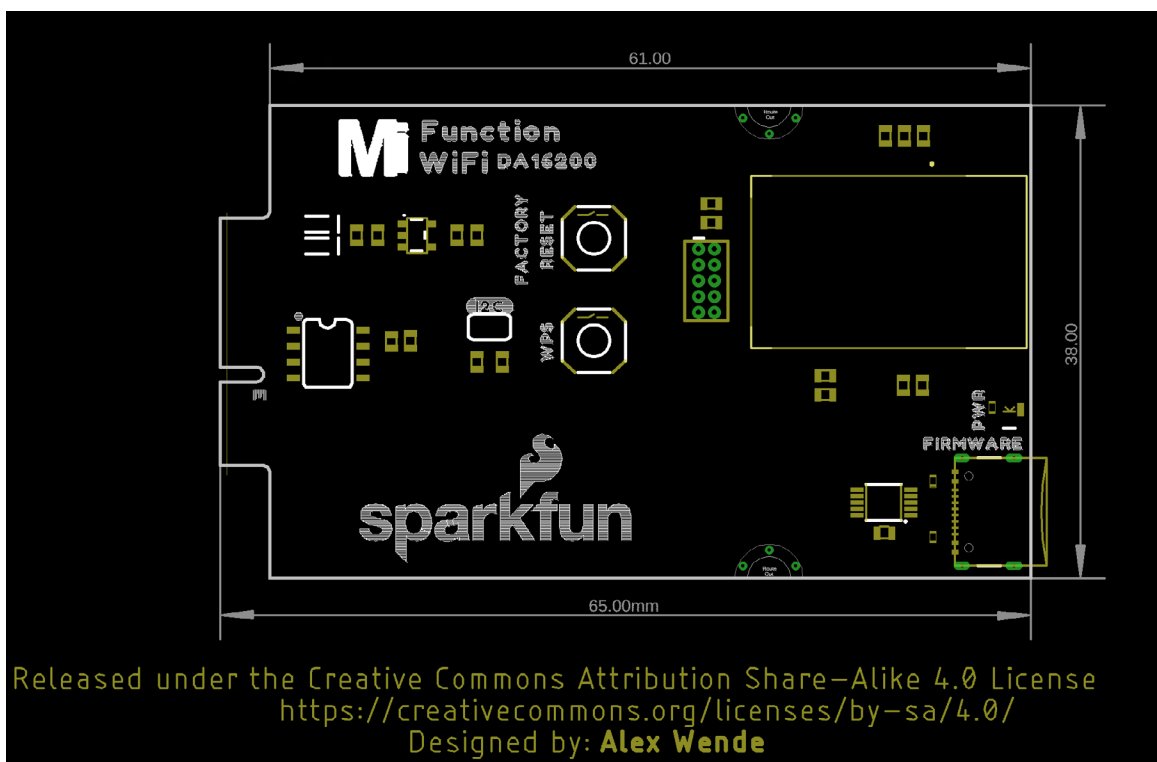
Features

- Arm® Cortex®-M4F core w/ clock frequency of 30MHz to 160MHz
- Wi-Fi processor:
 - IEEE 802.11b/g/n, 1x1, 20MHz channel bandwidth, and 2.4GHz
 - IEEE 802.11s Wi-Fi mesh
- Wi-Fi security:
 - WPA/WPA2-enterprise/personal
 - WPA2 SI
 - WPA3 SAE
 - OWE
- 32 M-bit/4 M-byte SPI flash memory
- 2 UARTs
- On-chip RTC
- Three ultra-low power sleep modes
- 3.5 μ A sleep current
- 2.1V to 3.6V operating voltage range

Applications

- Door locks
- Thermostats
- Sensors
- Pet trackers
- Home IoT projects

Board Dimensions



Schematic

- [MicroMod DA16200 Wi-Fi Function Board](#)

Mouser Part Number

[View Part](#)

To learn more, visit <https://www.mouser.com/new/sparkfun/sparkfun-micromod-da16200-wifi-function-board/>