

GPS-RTK-SMA Breakout - ZED-F9P (Qwiic)

GPS-16481

Product Overview

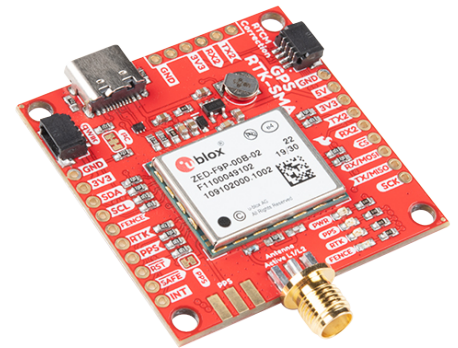
12-20-2021

For the most up-to-date information, visit www.mouser.com or the supplier's website.

Description

SparkFun GPS-RTK-SMA is the latest in a line of powerful Real Time Kinematics (RTK) boards. This board features the u-blox ZED-F9P module for high accuracy GNSS and GPS location solutions including RTK that is capable of 10mm, three-dimensional accuracy. Additionally, the ZED-F9P is capable of both rover and base station operations.

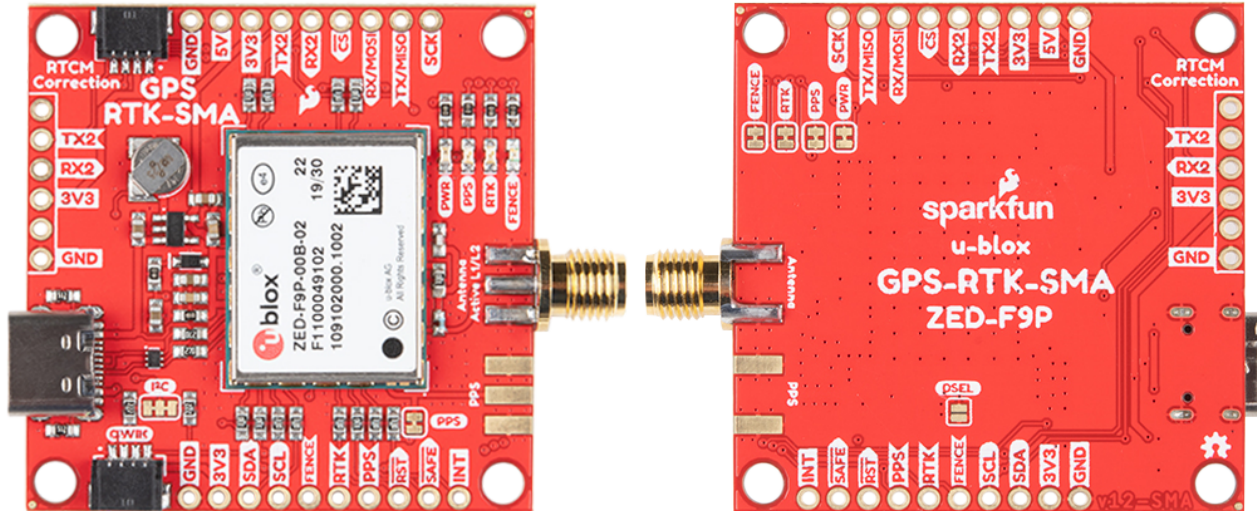
This board allows for easy identification of an object's X, Y, and Z location. Since the board includes a Qwiic system, soldering is not required to connect it to the rest of the system.



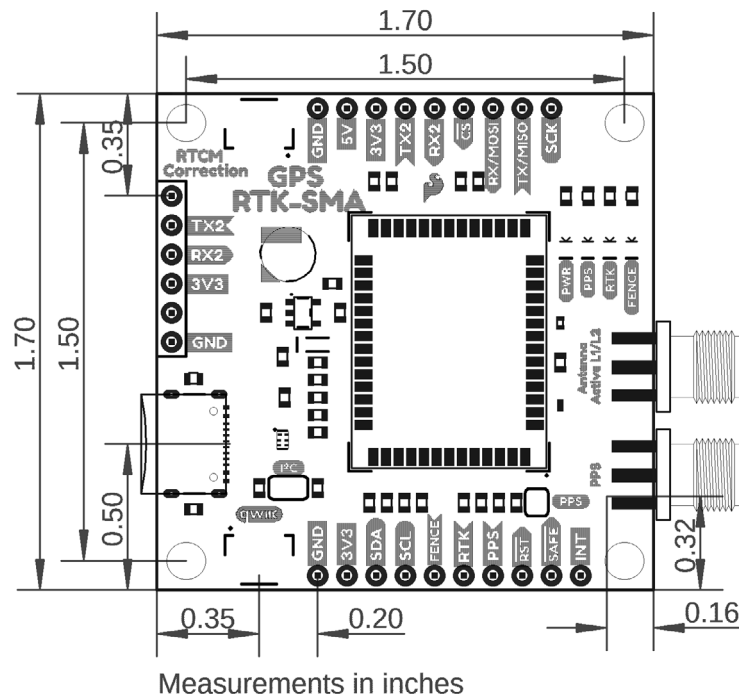
Features

- Concurrent reception of GPS, GLONASS, Galileo, and BeiDou signals
- Receives both L1C/A and L2C bands
- 5V or 3.3V operating voltage (all logic is 3.3V)
- 68mA to 130mA current range (varies with constellations and tracking state)
- 25s (cold) and 2s (hot) time to first fix
- Maximum navigation rate:
 - PVT - 25Hz (basic location over UBX binary protocol)
 - RTK - 20Hz
 - Raw - 25Hz
- Horizontal position accuracy:
 - 2.5m without RTK
 - 0.010m with RTK
- 50km (31 miles) maximum altitude
- 500m/s (1118mph) maximum velocity
- 6.8g weight
- 43.5mm x 43.2mm (1.71" x 1.7") dimensions
- 2x Qwiic connectors

Board Overview



Board Dimension



Mouser Part Number

[View Part](#)

To learn more, visit <https://www.mouser.com/new/sparkfun/sparkfun-gps-rtk-sma-breakout/>