

Seeeduino Crypto Board

102010288

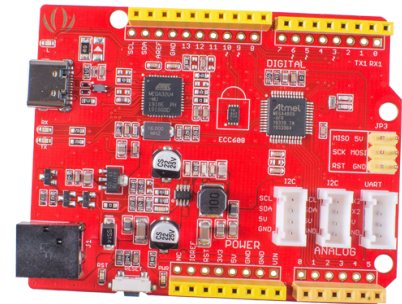
Product Overview

08/26/2022

For the most up-to-date information, visit www.mouser.com or the supplier's website.

Description

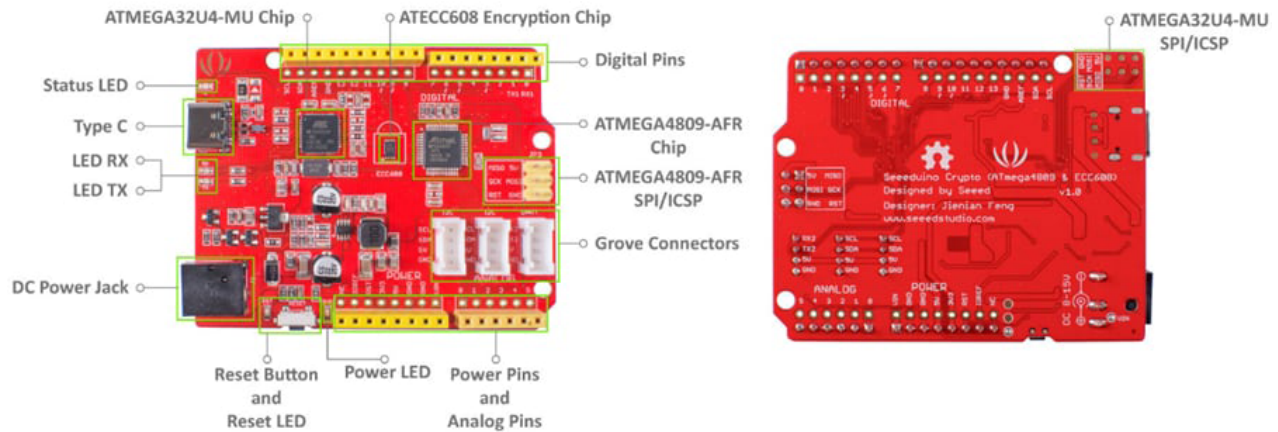
Seeed Studio Seeeduino Crypto Board is based on high-performance ATmega4809. This board features high-security cryptographic Chip ECC608, Type C power supply, data transmit, 16MHz clock speed, and $8V_{DC}$ to $15V_{DC}$ jack input voltage range. The Seeeduino crypto board includes six analog input pins, fourteen digital I/O out of which five pins work as PWM output, two Grove I2C port, and one Grove UART port.



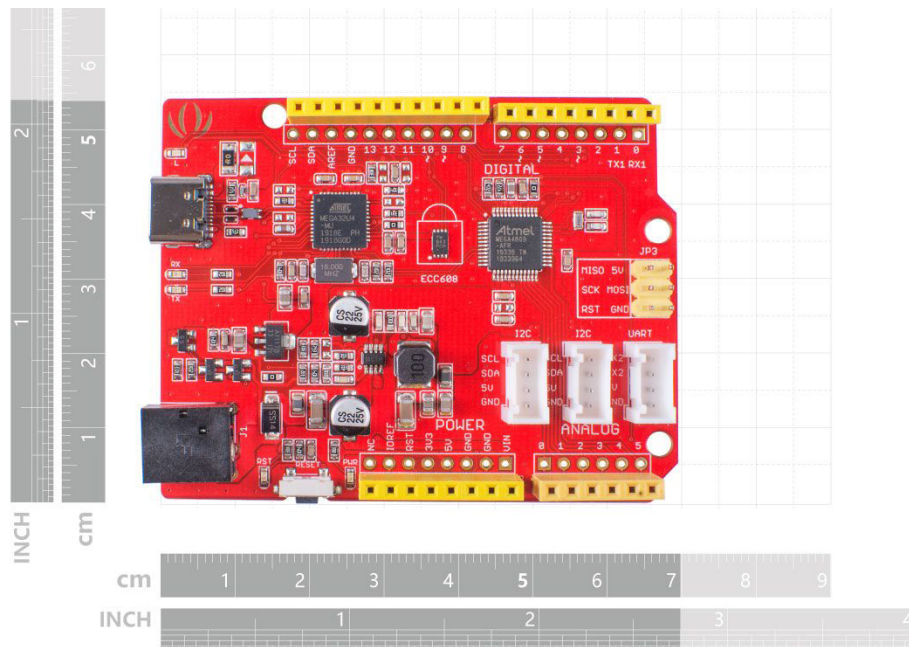
Features

- High-performance ATmega4809 microcontroller
- High-security cryptographic Chip ECC608, supports SHA-256 and HMAC Hash / AES-128
- Peripheral interface:
 - 2 Grove I²C ports
 - 1 Grove UART port
 - 1 ICSP interface
 - 1 USB type C data port
- 16MHz clock speed
- 5V USB Type C power supply
- $8V_{DC}$ to $15V_{DC}$ jack input voltage range
- I/O resource:
 - 6 analog input channels
 - 14 digital I/O pins
 - 5 PWM channels

Board Overview



Board Dimensions



Mouser Part Number

[View Part](#)

To learn more, visit <https://www.mouser.com/new/seeed-studio/seeed-seeeduino-crypto-board/>