

# 5.5" Mini-HDMI OLED Display

DFR0524

## Product Overview

07/19/2022

For the most up-to-date information, visit [www.mouser.com](http://www.mouser.com) or the supplier's website.

## Description

DFRobot 5.5" Mini-HDMI OLED Display offers 1920 x 1080 HDMI high-definition output and comes with a capacitive touch panel on its screen. The touch panel supports multi-touch which can simultaneously identify ten touch points at most. The USB touchscreen can be used as a keyboard or mouse as the touchscreen adopts driver-free technology.



The Mini-HDMI OLED Display features an HDMI interface, USB power supply, software brightness adjustment, and driver-free installation. A USB port can directly power the screen, and the hardware backlight of this display can be adjusted through host systems.

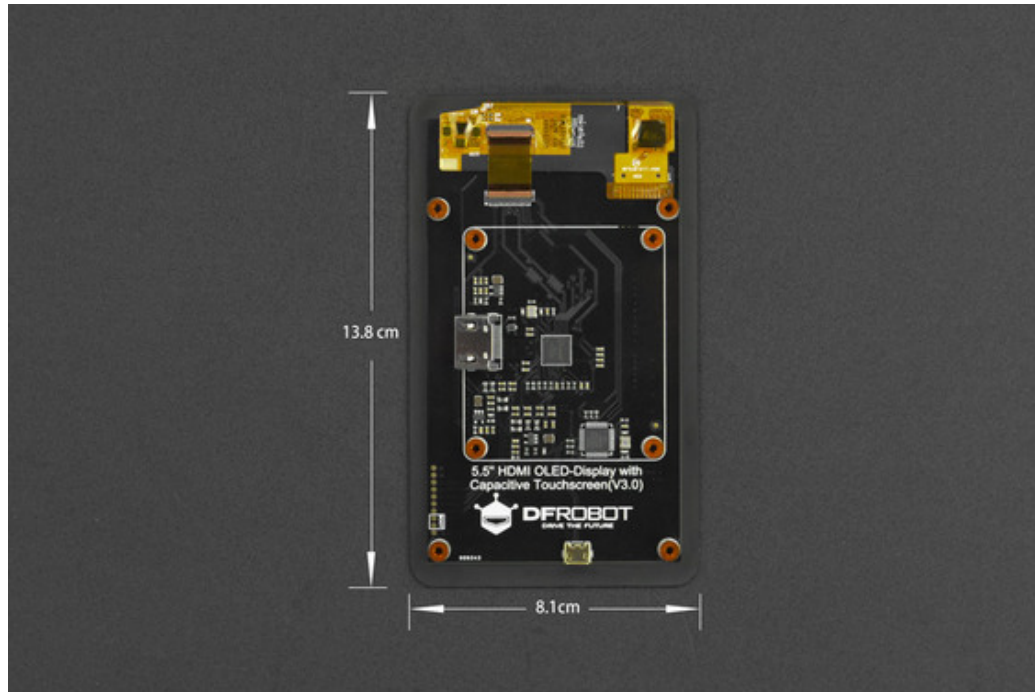
## Features

- Capacitive touchscreen, supports multi-touch
- HDMI interface
- USB power supply, driver-free installation
- Software brightness adjustment

## Specifications

- 5V operating voltage
- 700mA operating current
- 1080 x 1920 resolution
- HDMI video interface
- Micro-USB touch/power-supply interface
- Support 10 touch points
- 68.3mm x 121.42mm display area
- 138mm x 81mm outline area
- M2.5 mounting hole size
- 95mm x 64mm outer mounting hole
- 58mm x 49mm (Raspberry Pi compatible) inner mounting hole

## Touchscreen Dimensions



## Mouser Part Number

[View Part](#)

To learn more, visit <https://www.mouser.com/new/dfrobot/dfrobot-5-5-oled-display/>