

EVAL-CN0575-RPIZ Evaluation Board

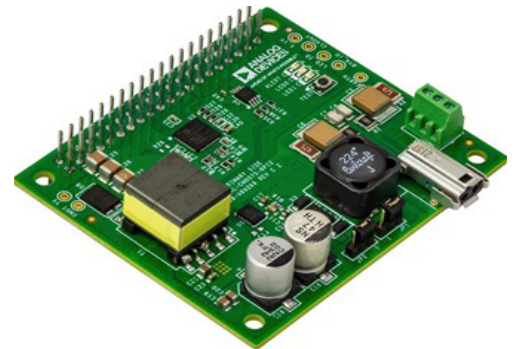
Product Overview

12-8-2023

For the most up-to-date information, visit www.mouser.com or the supplier's website.

Description

Analog Devices Inc. EVAL-CN0575-RPIZ Evaluation Board evaluates the CN0575 10BASE-T1L Field Device Development Platform with Class 12 and 13 Single Pair Power over Ethernet (SPoE). This board includes an additional GPIO header with extended leads to allow stacking and development of field device applications using Raspberry Pi HATs.



The EVAL-CN0575-RPIZ evaluation board uses the default hardware configuration for the PHY and can be connected to a link partner using either a P1 terminal block or a P2 port. This evaluation board features a TEST button and LED circuit that can be used as digital input and a general-purpose indicator. The EVAL-CN0575-RPIZ board can be used in remote user input/output, home automation, industrial automation, educational, and Internet of Things (IoT) applications.

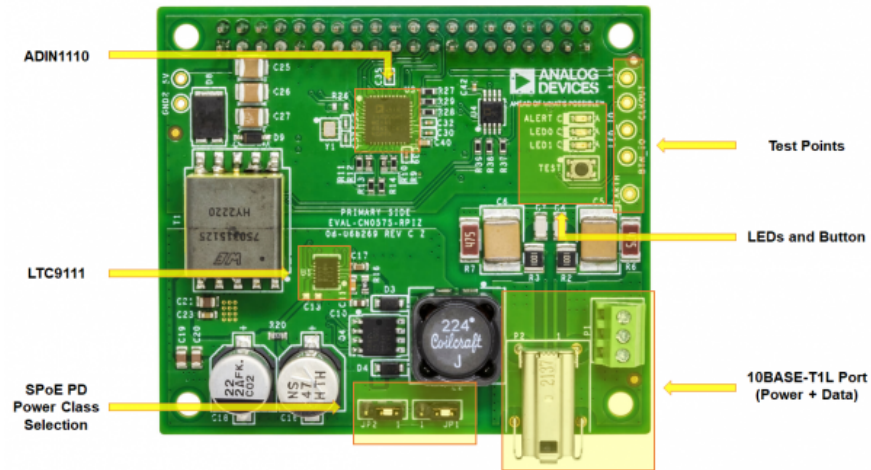
Features

- Evaluates CN0575 Field Device Development Platform
- Includes TEST button and LED circuit
- Features an additional GPIO header with extended leads
- Provides speeds of up to 10Mbps
- Power Class 12 and 13 deliver capable

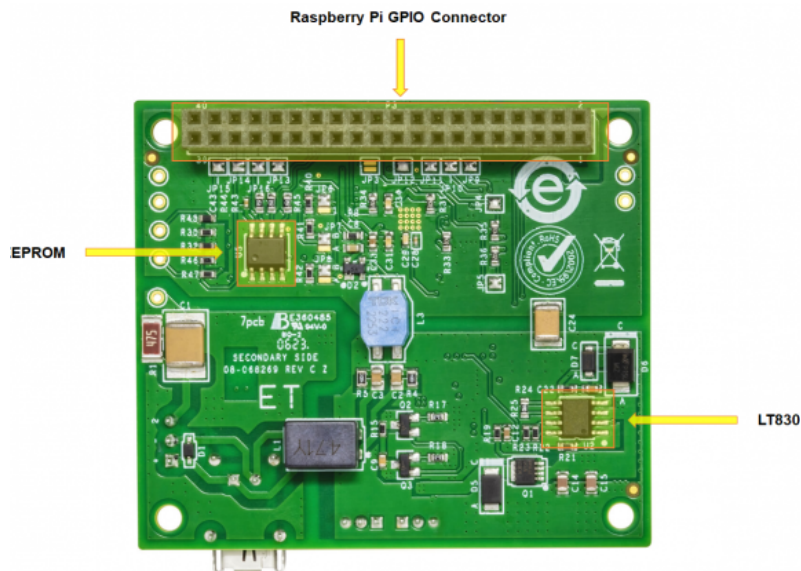
Applications

- Remote user input/output
- Home automation
- Industrial automation
- Educational
- Internet of Things (IoT)

Board Overview



Primary Side



Secondary Side

Mouser Part Number

[View Part](#)

To learn more, visit <https://www.mouser.com/new/analog-devices/adi-eval-cn0575-rpiz-board/>.