

EVAL-CN0554-RPIZ Circuit Evaluation Board

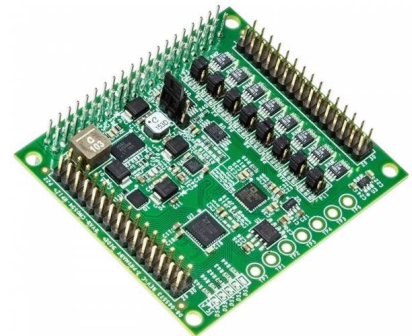
Product Overview

12-13-2023

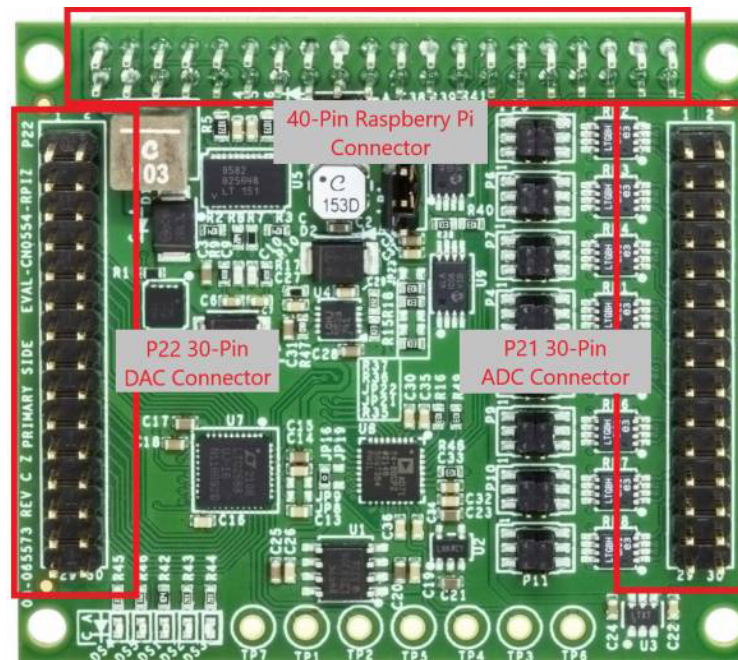
For the most up-to-date information, visit www.mouser.com or the supplier's website.

Description

Analog Devices Inc. EVAL-CN0554-RPIZ Circuit Evaluation Board is designed to be mounted directly on top of a Raspberry Pi. This flexible, general-purpose multichannel mixed-signal analog input/output module consists of three main connectors: a 40-pin connector, a 30-pin DAC connector, and a 30-pin ADC connector.



The EVAL-CN0554-RPIZ includes nine jumper headers. Eight headers are used to select the attenuation of the eight pairs of analog inputs, and one header is used to set the write protection of onboard EEPROMs.

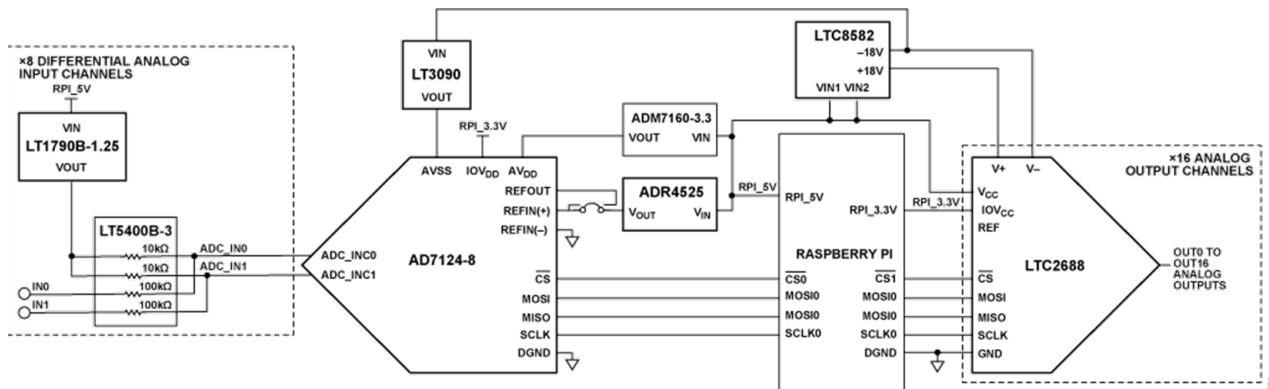


EVAL-CN0554-RPIZ Connectors

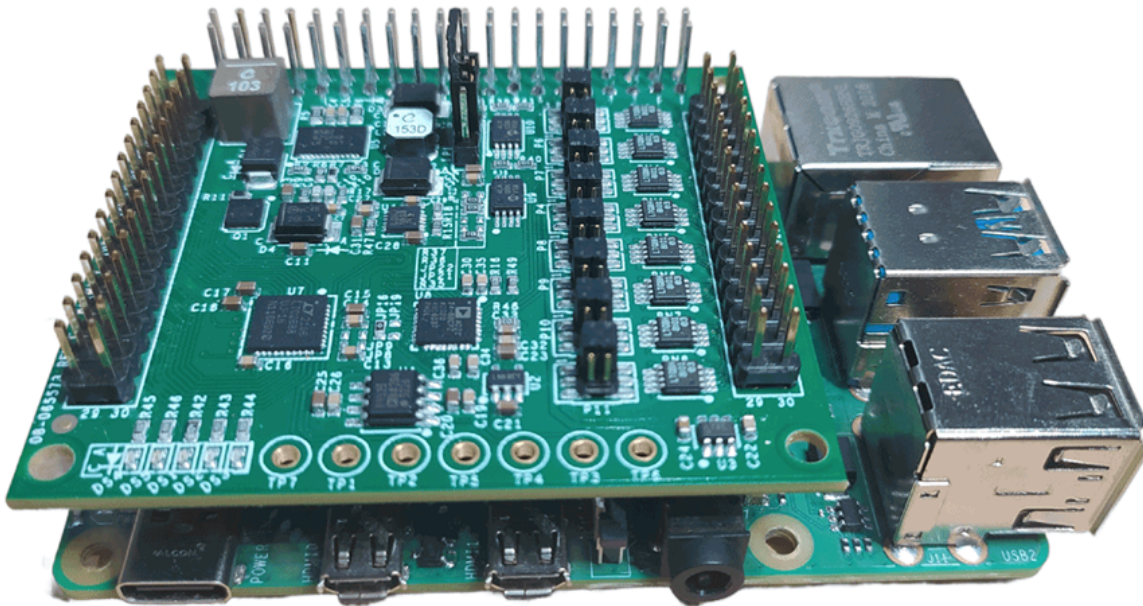
Features

- 16 single-ended outputs
- Designed to be mounted directly on top of a Raspberry Pi
- Includes a 40-pin, 30-pin DAC, and 30-pin ADC connector
- Up to $\pm 15V$ analog outputs
- $\pm 2.5V$ and $\pm 25V$ selectable input voltage ranges

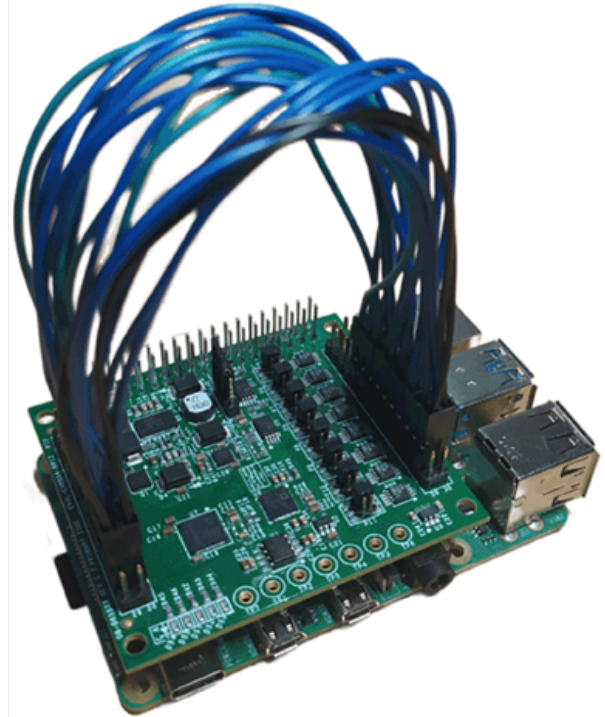
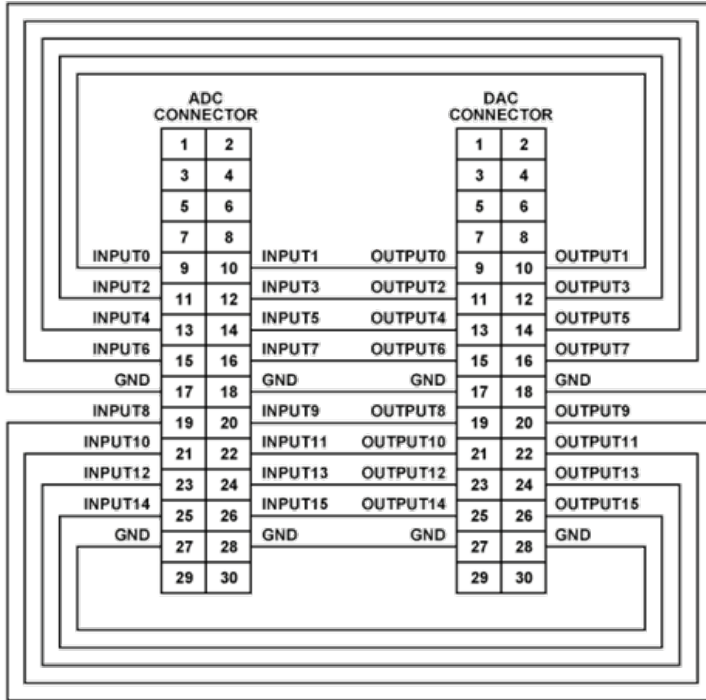
Block Diagram



Equipment Required



Test Setup



Mouser Part Number

[View Part](#)

To learn more, visit <https://www.mouser.com/new/analog-devices/adi-eval-cn0554-rpiz-module/>