

# Sonoff S26 Wi-Fi® Smart Plug

## Product Overview

08/17/2022

For the most up-to-date information, visit [www.mouser.com](http://www.mouser.com) or the supplier's website.

## Description

Seeed Studio Sonoff S26 Wi-Fi® Smart Plug is used to convert any plug into a smart outlet with a timer function that works on a smartphone. This smart socket helps to turn on/off any connected device either on APP eWeLink or by pressing the manual control knob of the Wi-Fi plug. The smart socket allows setting countdown/scheduled/loop timers to auto-turn on/off the WiFi-controlled outlet on App. This Sonoff S26 operates at 0°C to 40°C temperature range and is compatible with Amazon Alexa, Google Assistant, IFTTT, and Google Nest.



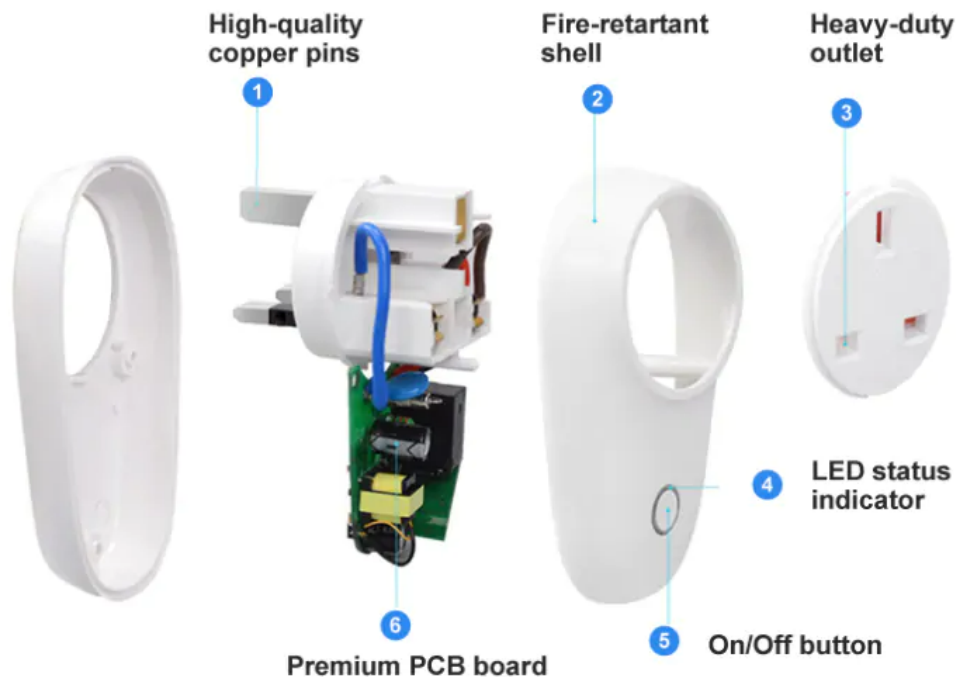
## Features

- Remote ON/OFF:
  - Turn electrical devices on/off from anywhere
- App support:
  - Free iOS and Android mobile App eWeLink
- LAN control:
  - Turn on/off the device even when WiFi has no internet access
- Sync status:
  - Real-time device status provided to the app
- Timing:
  - Set scheduled/countdown/loop timers to turn on/off at the specified time
- Share control:
  - Control smart home together with family
- Scene:
  - Turn on/off a gang of devices with one tap
- Smart scene:
  - Triggered on/off by temperature, humidity, or other environmental conditions from the sensor
- Compatibility:
  - Works perfectly with Amazon Alexa, Google Assistant, IFTTT, and Google Nest

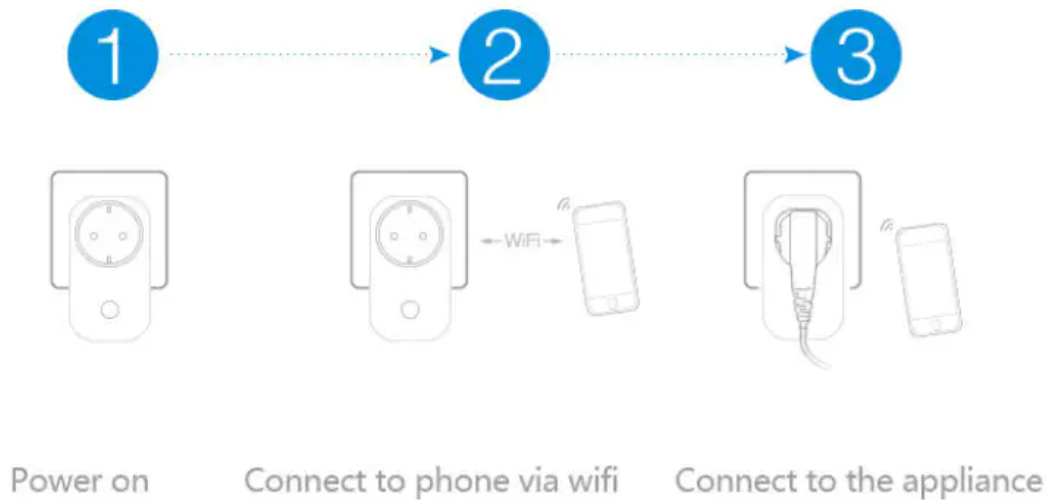
## Specifications

- 90V<sub>AC</sub> to 250V<sub>AC</sub> (50Hz/60Hz) power supply range
- 10A maximum current
- 2200W maximum power
- Fire retardant ABS enclosure material
- 802.11.b/g/n 2.4G Wi-Fi wireless standard
- WEP/TKIP/AES encryption
- WPA-PSK/WPA2-PSK security mechanism
- 0°C to 40°C operating temperature range
- 5% to 90% RH non-condensing operating humidity range
- 104mm x 55mm x 73mm dimensions

## Overview



## Socket Usage



## Mouser Part Number

[View Part](#)

To learn more, visit <https://www.mouser.com/new/seeed-studio/seeed-studio-sonoff-s26-plug/>