

SEN0405

Fermion:LIS2DW12 Triple Axis Accelerometer Sensor

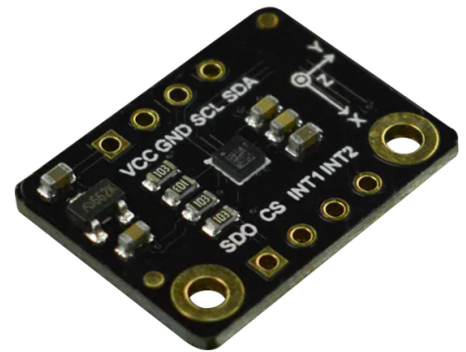
Product Overview

01-10-2023

For the most up-to-date information, visit www.mouser.com or the supplier's website.

Description

DFRobot Fermion:LIS2DW12 Triple Axis Accelerometer Sensor is a low-power, high-performance three-axis linear accelerometer. This LIS2DW12 sensor features 50nA low power consumption mode, 1.3mgRMS low noise, 32 FIFO, $\pm 2g/\pm 4g/\pm 8g/\pm 16g$ full scale, 16-bit data output, and 1.6KHz to 1.6KHz bandwidth. The sensor comes with two independent programmable interrupts and a dedicated internal engine that helps achieve motion and acceleration detection. Typical applications include free-fall, portrait/landscape detection, 6D/4D orientation detection, configurable single/double-tap recognition, stationary/motion detection, and wake-up for smart power saving.



Features

- LIS2DW12 triple-axis accelerometer
- Two independent programmable interrupts
- Dedicated internal engine for achieving various functions:
 - Free-fall
 - Portrait/landscape detection
 - 6D/4D orientation detection
 - Configurable single/double-tap recognition
 - Stationary/motion detection and motion wake-up for smart power saving

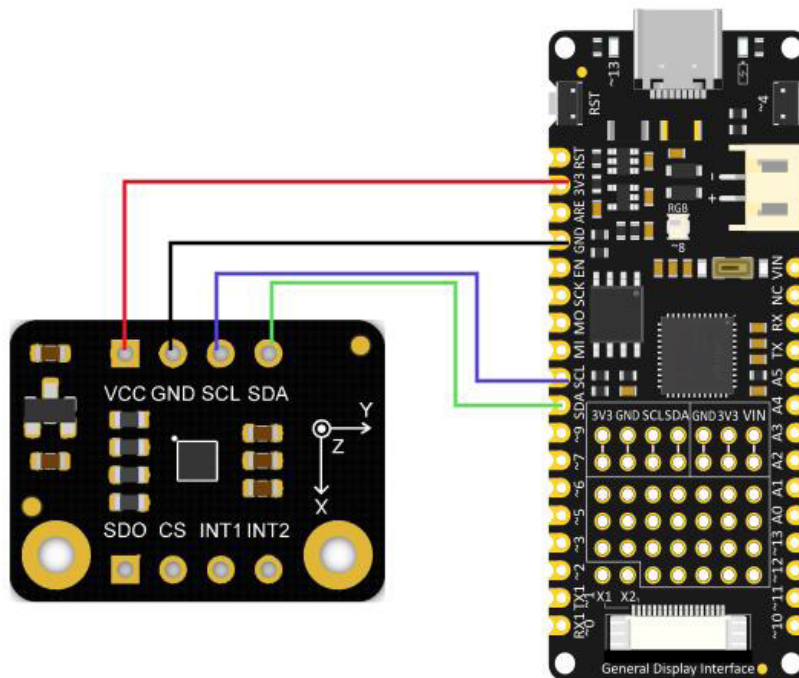
Specifications

- | | |
|---|--|
| • 3.3V operating voltage | • 1.6Hz to 1600Hz frequency |
| • 50nA (low power consumption mode)/0.17mA (high-performance mode) operating current | • 1.3mg RMS (low power mode) ultra-low noise |
| • SPI/I ² C interface | • 32-level FIFO (first-in-first-out buffer zone) |
| • 0x19 (default address)/0x18 (optional pull down the SDO pin to select) I ² C address | • 10000g high shock survivability |
| • $\pm 2g/\pm 4g/\pm 8g/\pm 16g$ optional scale | • ECOPACK, RoHS, and "Green" compliant |
| • -40°C to 85°C operating temperature | • 15mm x 20mm/0.59inch x 0.79inch module size |
| • 16-bit data output | |

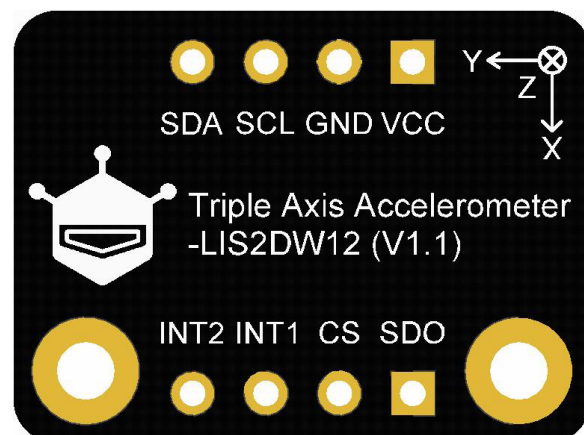
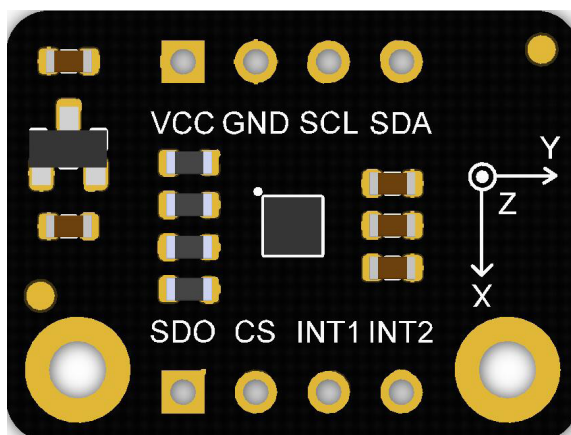
Applications

- Self-balancing robot
- Free-fall detection
- Human action recognition
- Gesture recognition and gaming
- Tap/double-tap recognition
- Motion detection for wearables

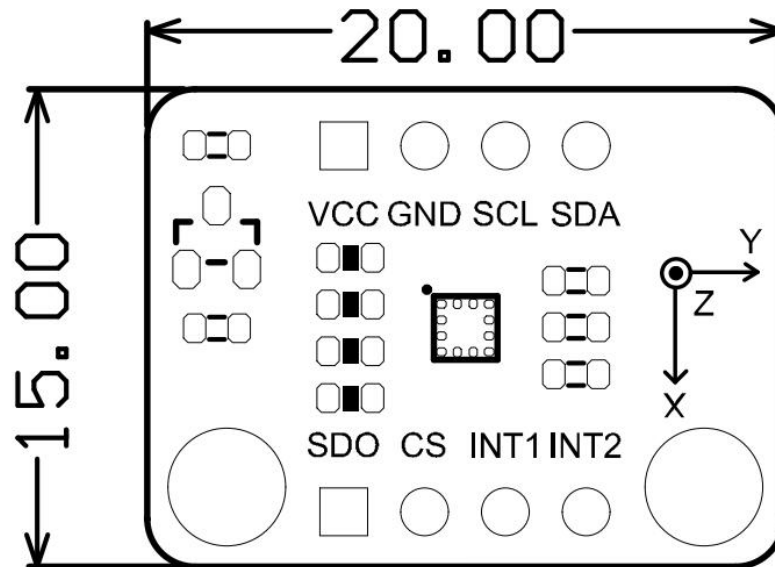
Connection Diagram



Board Overview



Dimension Diagram



Mouser Part Number

[View Part](#)

To learn more, visit

<https://www.mouser.com/new/dfrobot/dfrobot-fermion-lis2dw12-accelerometer-sensor/>