

Bluno Beetle Shield

DFR0356

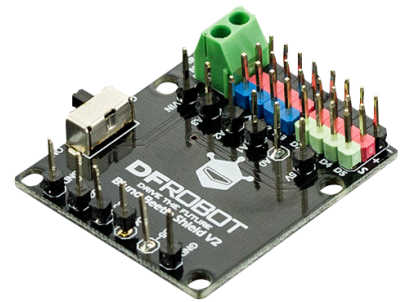
Product Overview

07/18/2022

For the most up-to-date information, visit www.mouser.com or the supplier's website.

Description

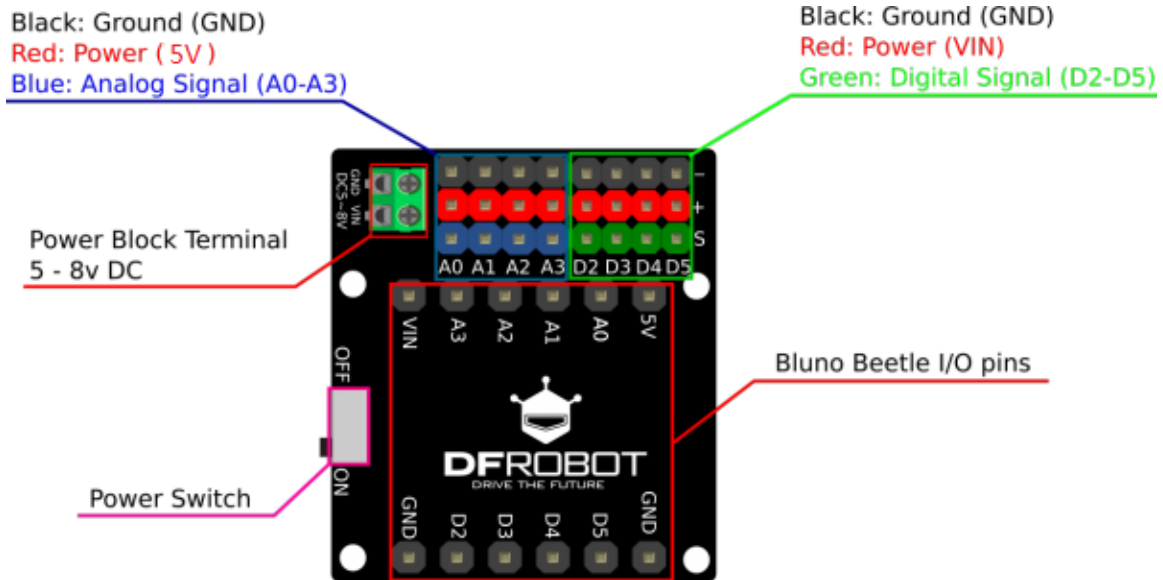
DFRobot Bluno Beetle Shield expands the beetle's single analog and digital I/O pins to the 3-pin gravity interface. This helps to easily attach gravity interface modules and gives more power and ground connections. This bluno beetle shield features a convenient external power supply and a 5V to 8V switch to power the board on and off. To use the shield, the bluno beetle is stacked onto the shield's I/O pins and then soldered in place. This beetle shield includes two TB6612FNG motor driver chips, that help in improve efficiency and reduce the component size. The module comes up with a built-in low voltage detection circuit and thermal shutdown protection circuit.



Features

- D2-D5 4x digital I/O pins
- A0-A3 4x analog input pins
- 5V to 8V input range
- 4x mounting holes (3mm diameter)
- Power switch
- 38mm x 37mm/1.5" x 1.45" dimensions

Pinout Diagram



Mouser Part Number

[View Part](#)

To learn more, visit <https://www.mouser.com/new/dfrobot/dfrobot-bluno-beetle-shield/>