

DFR0620 ESP-EYE Development Board

SDFR0620

Product Overview

06-28-2022

For the most up-to-date information, visit www.mouser.com or the supplier's website.

Description

DFRobot DFR0620 ESP-EYE Development Board is designed for image recognition and speech signal processing. This development board integrates an onboard ESP32 chip, a 2-megapixel camera, digital microphone, 8Mbyte PSRAM, and 4Mbyte flash. The ESP-EYE development board supports image transmission via Wi-Fi, debugging through a Micro-USB port, and firmware burning with windows or Linux PC.



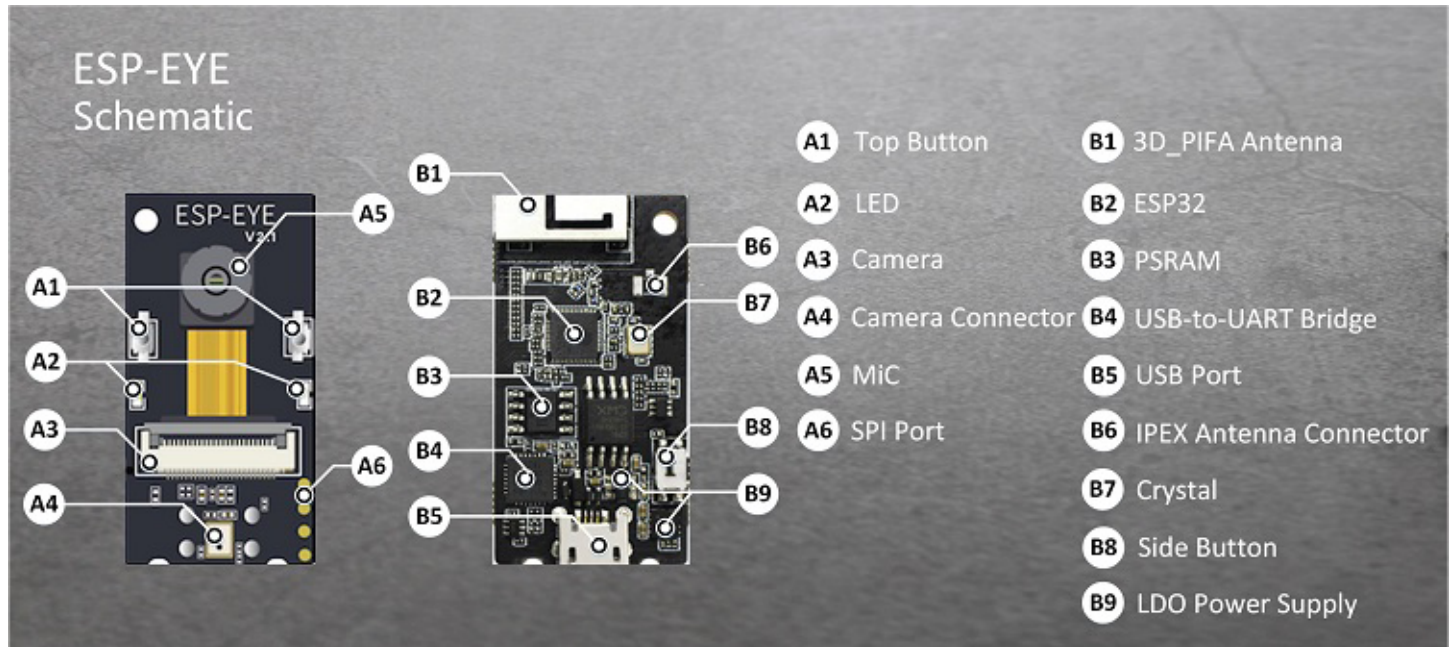
Features

- ESP32 chip
- 2-megapixel camera
- 4 Mbyte flash
- 8 Mbyte PSRAM
- Support image transmission via Wi-Fi
- Debugging and power supply via Micro USB
- Support windows and Raspberry Pi
- ESP-IDF software SDK
- ESP-WHO AI framework
- Face detection and recognition

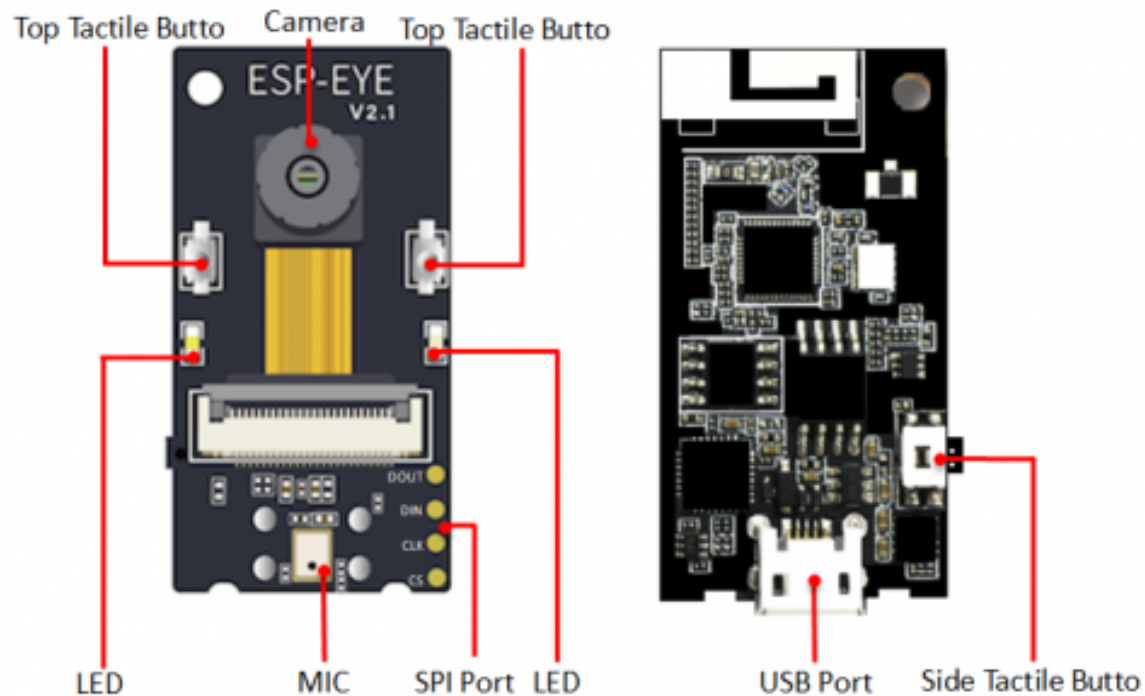
Specifications

- 5V power supply
- 0.5A operating current
- 1200mA total current output from I/O
- -40°C to 125°C operating temperature range
- -50°C to 150°C storage temperature range
- 41mm x 21mm x 6.50mm/1.61" x 0.83" x 0.26" dimensions

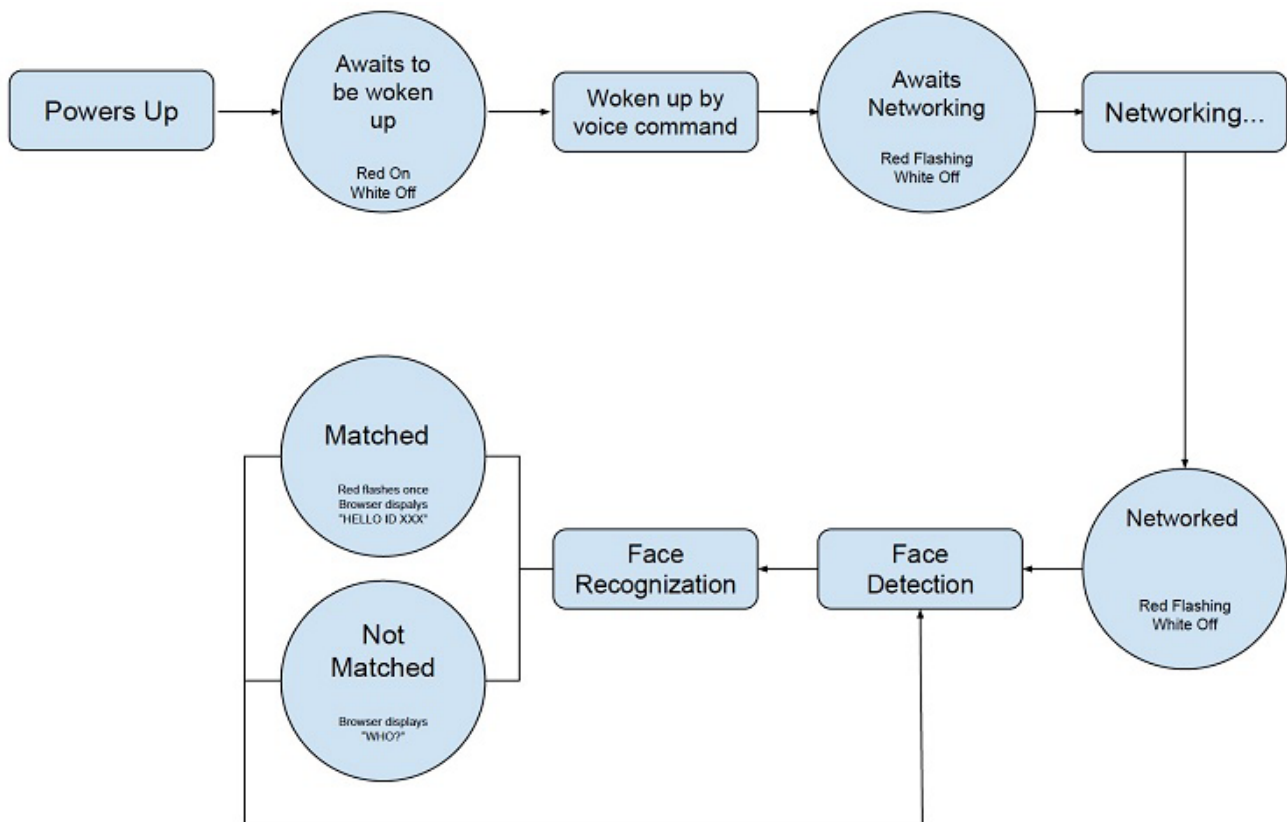
Schematic



Board Overview



Development Board Workflow



Mouser Part Number

[View Part](#)

To learn more, visit <https://www.mouser.com/new/dfrobot/dfrobot-dfr0620-esp-eye-board/>