

ADALM2000 Power Booster Board

AD-M2KPWR-EBZ

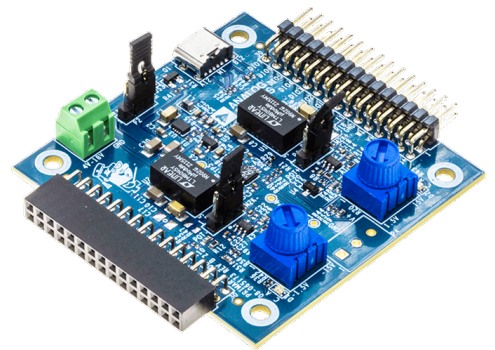
Product Overview

10-25-2022

For the most up-to-date information, visit www.mouser.com or the supplier's website.

Description

Analog Devices Inc. ADALM2000 Power Booster Board is an ADALM2000 add-on board that increases the output current capability up to 700mA. This power booster board operates from a 5.1V 3A USB type-C that is capable to increase the output current of ADALM2000 power supplies. The power board operates in M2K and POT modes. This power board can also be used as a standalone benchtop power supply with positive and negative outputs. Typical applications of ADALM2000 power booster board include general-purpose electronic systems, educational applications, and automated test equipment.



Features

- ADALM2000 compatible
- USB Type-C powered (no power delivery included)
- Provides two outputs with increased current sourcing capabilities

Specifications

- **Inputs:**
 - USB type C:
 - 4V to 18V (validated with RPI USB-C power supply - not provided in the kit) and 15W (power supply permitting)
 - External (screw terminal connector):
 - 4V to 18V and 20W (power supply permitting)
- **Outputs (2 control modes):**
 - Two variable power supplies that track M2K user supplies:
 - 0V to 5V (400mA in USB power mode)
 - -5V to 0V (400mA in USB power mode)
 - Two independent variable power supplies, adjusted by potentiometers:
 - 1.5V to 15V (up to 700mA if powered with 18V)
 - -15V to -1.5V (up to 700mA if powered with 18V)

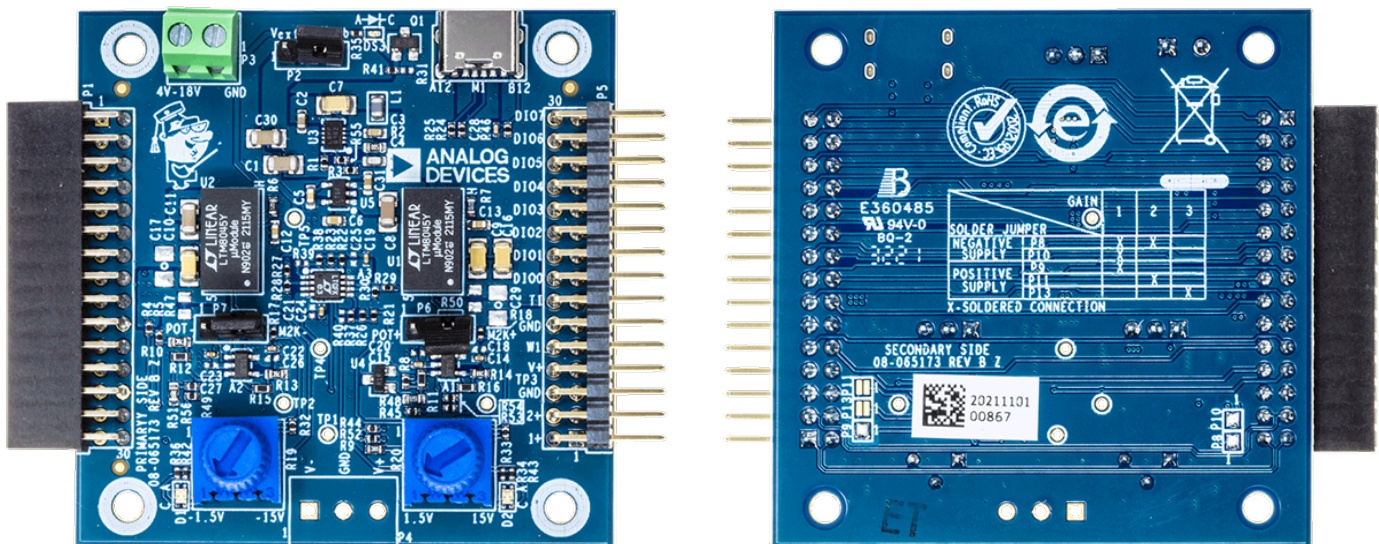
Applications

- General-purpose electronic systems
- Educational applications
- Automated test equipment

Kit Contents

- AD-M2KPWR-EBZ
- Standoffs and screws

Board Overview



Mouser Part Number

[View Part](#)

To learn more, visit

<https://www.mouser.com/new/analog-devices/analog-devices-adalm2000-power-booster-board/>