

## XBee Explorer Dongle

WRL-11697, ROHS Complaint

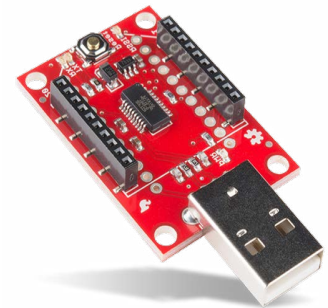
### Product Overview

12-22-2021

For the most up-to-date information, visit [www.mouser.com](http://www.mouser.com) or the supplier's website.

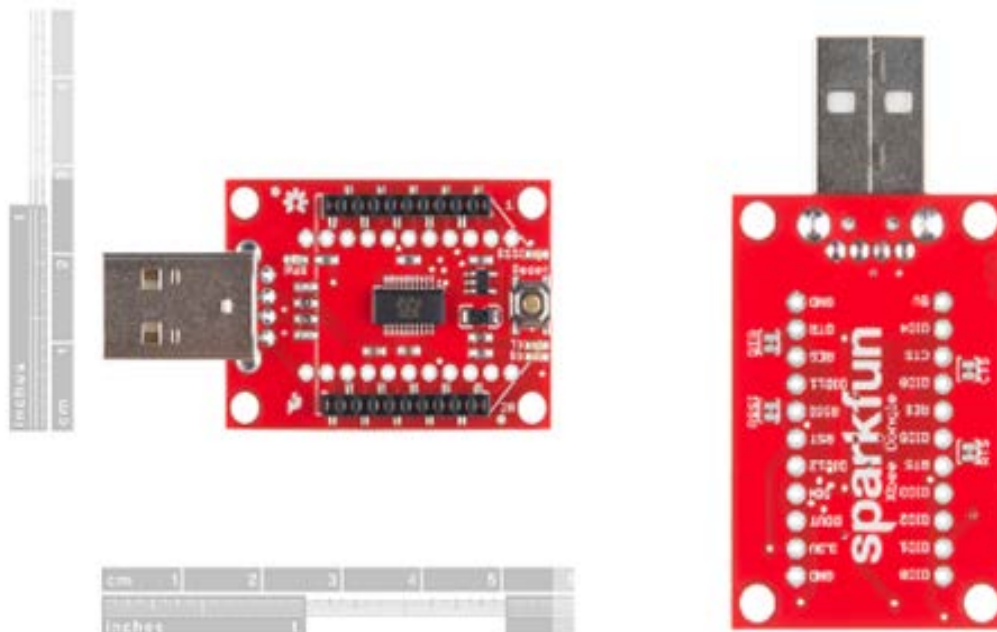
### Description

SparkFun XBee Explorer Dongle for the Digi XBee module line can be plugged directly into the USB port and the device acts as a gateway between the computer and the XBee. This dongle unit works with all XBee modules that include Series 1 and Series 2.5, standard and Pro versions. The onboard voltage regulator can operate up to 500mA. This XBee Explorer dongle features an FT231X USB-to-Serial converter that translates the data between the computer and the XBee.



The dongle offers a reset button, a voltage regulator for power supply, and four LEDs (RX, TX, RSSI, and power indicator) to help debug the XBee. This XBee Explorer dongle breaks out each of the XBee's I/O pins to a pair of breadboard-compatible headers.

### Front And Back View



## Mouser Part Number

[View Part](#)

To learn more, visit <https://www.mouser.com/new/sparkfun/sparkfun-xbee-explorer-dongle/>