

# Qwiic GPIO

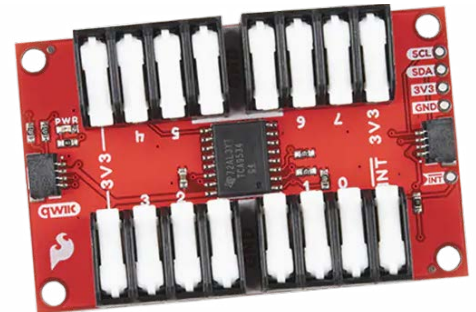
## Product Overview

11-10-2021

For the most up-to-date information, visit [www.mouser.com](http://www.mouser.com) or the supplier's website.

## Description

Sparkfun Qwiic GPIO is an I<sup>2</sup>C device based around the TCA9534 I/O expander IC from Texas Instruments. This board adds an additional eight I/O pins that users can read and write just like any other digital pin on your controller. The details of the I<sup>2</sup>C interface have been taken care of in an Arduino library so users can call functions similar to Arduino's `pinMode` and `digitalWrite`, allowing them to focus on projects.



The pins of the TCA9534 IC are broken out to easy-to-use latch terminals that removes the need for screwing wires into place. This GPIO features input polarity inversion register, open-drain active-low interrupt output, and two Qwiic connectors. The Qwiic GPIO offers the option to control each I/O pin individually or all at once.

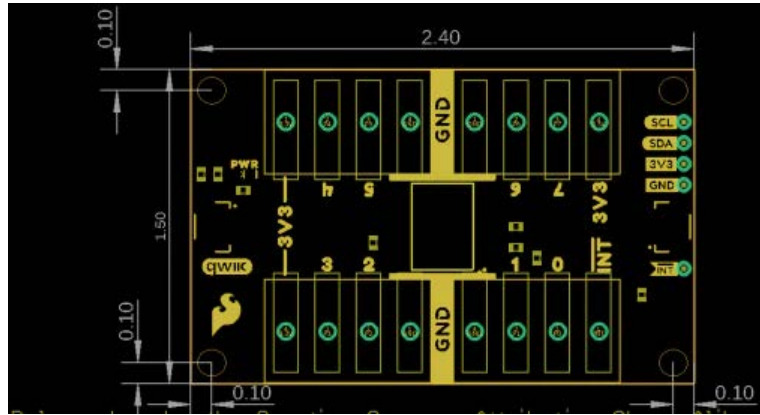
## Features

- 0x27 (default) I<sup>2</sup>C address:
  - Hardware address pins allow up to eight boards on a single bus
- Based around the Texas Instruments TCA9534 I/O expander IC
- Input polarity inversion register
- Control each I/O pin individually or all at once
- Open-drain active-low interrupt output

## Specifications

- Eight configurable GPIO pins available
- 2x Qwiic connectors
- 60.96mm x 38.10mm dimensions

## Board Layout



## Mouser Part Number

[View Part](#)

To learn more, visit <https://www.mouser.com/new/sparkfun/sparkfun-qwiic-gpio/>