

BOB-16784

Qwiic Mux Breakout

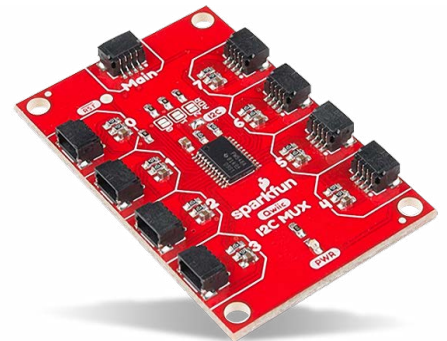
Product Overview

11-17-2021

For the most up-to-date information, visit www.mouser.com or the supplier's website.

Description

SparkFun Qwiic Mux Breakout (BOB-16784) enables communication with multiple I²C devices that have the same address and makes it simple to interface with. The Qwiic Mux breakout board includes eight configurable addresses of its own, which allow up to 64 I²C buses on a connection. This breakout allows changing last three bits of the address-byte and eight-jumper selectable addresses for more than one Qwiic Mux breakout on the same I²C port.

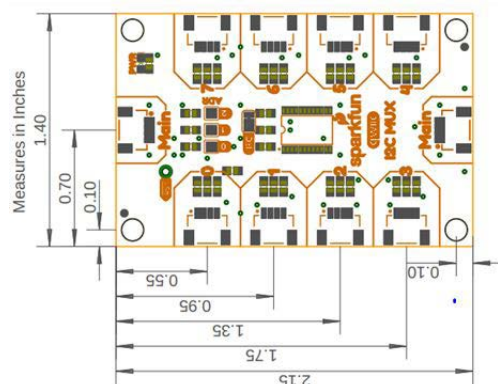


The Qwiic Mux breakout operate between 1.65V to 5.5V making it ideal for all the SparkFun's Qwiic boards. The BOB-16784 Qwiic Mux breakout board evaluates TI TCA9548A low-voltage 8-channel I²C switch with reset.

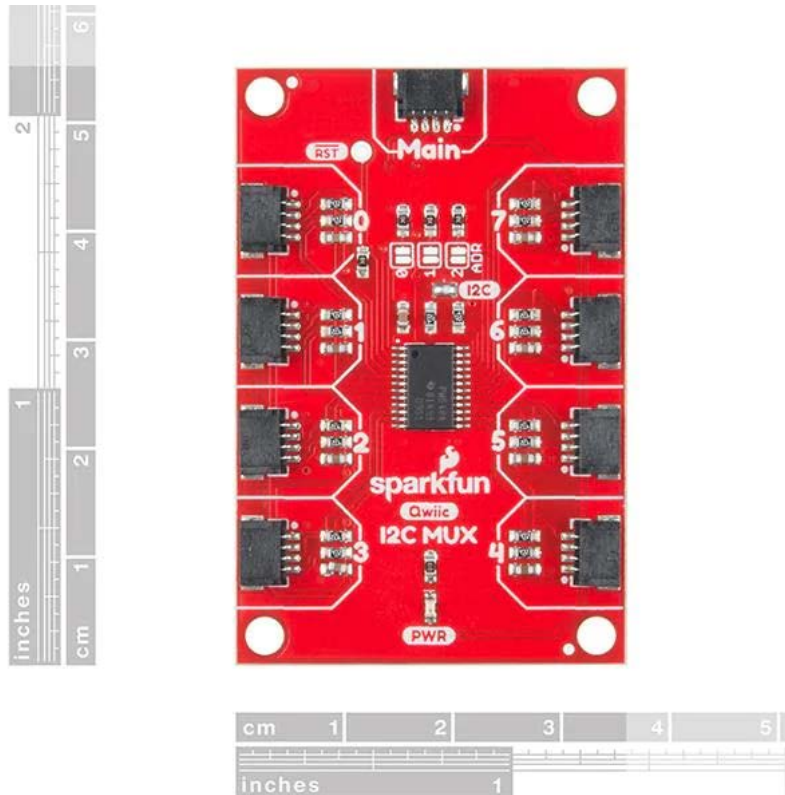
Features

- 1.65V to 5.5V operating voltage
- -40°C to 85°C operating temperature
- 0x70 (default) up to 0x77 I²C address
- 9x Qwiic connectors

Board Dimensions



Board Layout



Mouser Part Number

[View Part](#)

To learn more, visit <https://www.mouser.com/new/sparkfun/sparkfun-bob-16784-qwiic-mux-breakout/>