

# MARK - Make A Robot Kit

114992076

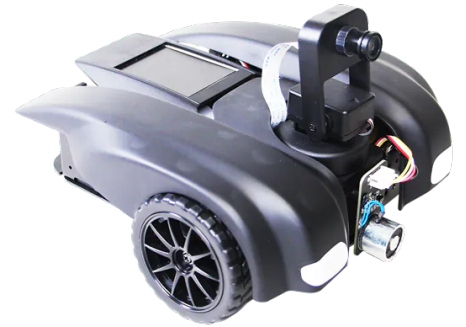
## Product Overview

08-17-2022

For the most up-to-date information, visit [www.mouser.com](http://www.mouser.com) or the supplier's website.

## Description

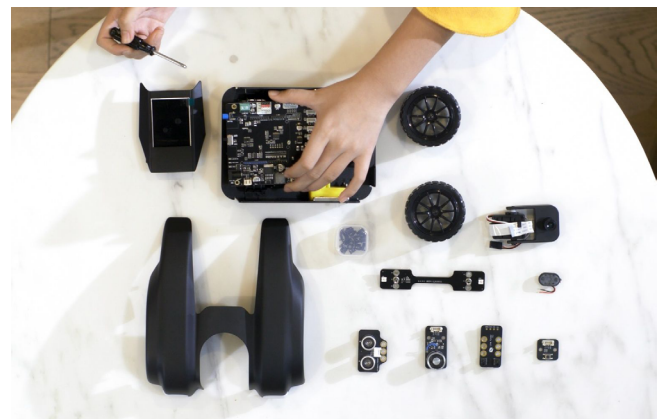
Seeed Studio Make A Robot Kit (MARK) is designed to learn coding, robotics, and Artificial Intelligence (AI) through various fun projects. This kit is designed around a Kendryte K210-based machine vision module and an Arduino-compatible baseboard. The MARK is customizable, extendable, open-source, and supports Micropython for coding. This kit comes with disassembled parts that can be built with the help of tools for hands-on construction experience. The MARK features Markduino, an interface board that offers plug-and-play for compatible Grove sensors.



The MARK AI robot kit helps users to have the hands-on experience of constructing and assembling an AI robot car and implementing artificial intelligence technologies such as image recognition, object detection, computer vision, and automated self-driving controls.

## Features

- Make a self-driving car
- Interactive and engaging through AI recognition
- On-device model training
- Hands-on from construction to the coding
- Supports Micropython
- Customizable, extendable, and open-source



## Specifications

- 6 x AA batteries for power supply
- USB-C™ port for data connection
- 2.4" color LCD display
- Micro-SD slot
- Wi-Fi 2.4G, Bluetooth 4.2 connectivity via onboard ESP32
- RISC-V dual-core 64-bit CPU with FPU
- CNN hardware accelerator 0.25 TOPS @ 0.3W, 400MHz; overclock to 800MHz, 0.5 TOPS KPU
- Static RAM 8MB (6MB SRAM, 2MB AI SRAM)
- QVGA@60fps VGA@30fps or overclocked 60fps image recognition

## Kit Contents



x1

Project Map



x1

Quick Start Guide



x16

Recognition Cards



x3

Card Support



x1

Chassis Cover



x1

M.A.R.Kduino



x1

Headlight Board



x1

Speaker



x1

Ultrasonic Sensor



x1

Electromagnet



x1

Line Follower



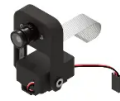
x1

Button



x1

Chassis



x1

Pan-Tilt Camera



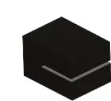
x2

Tyre



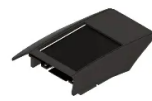
x1

Universal Wheel



x1

Line Follower Stand



x1

cyberEye & 2.4" Color LCD



x1

Philips Head



x1

Flat Head Screwdriver



x14

Magnetic Sticker



x3

20cm Grove Cable



x3

10cm Grove Cable



x1

1m Type-C USB Cable



x1

Hardware Box



x20

M3x 8mm Screws

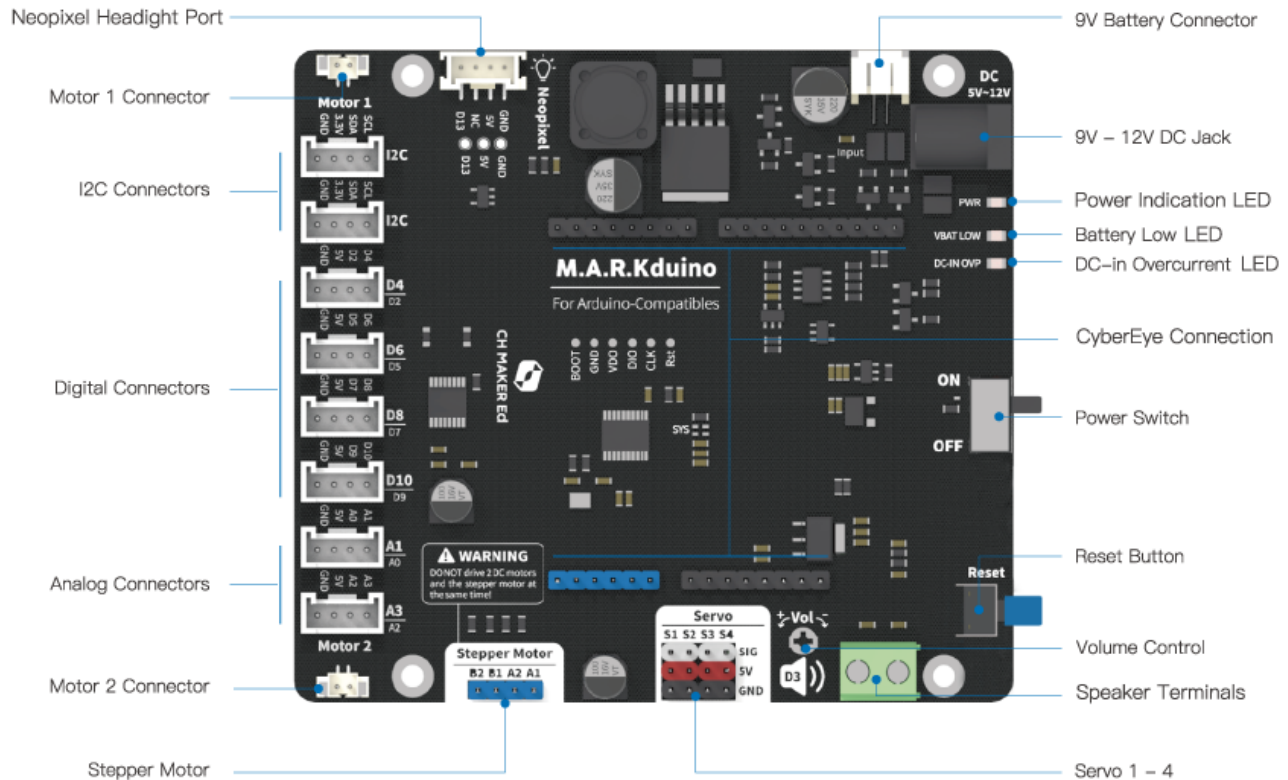


x10

Spacer

## Make A Robot Kit

## Hardware Overview



## Mouser Part Number

[View Part](#)

To learn more, visit <https://www.mouser.com/new/seeed-studio/seeed-studio-make-a-robot-kit/>