

Sipeed MAIX Bit Suit With LCD, Camera

110991190

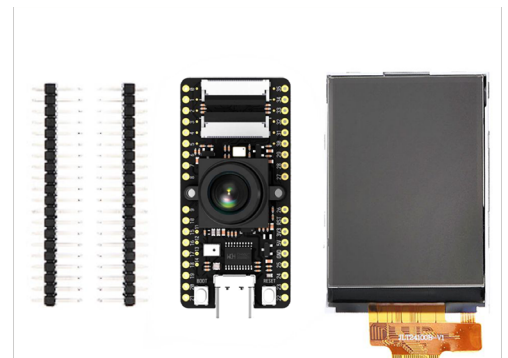
Product Overview

09/02/2022

For the most up-to-date information, visit www.mouser.com or the supplier's website.

Description

Seeed Studio Sipeed MAIX Bit Suit With LCD, Camera is a breadboard-friendly board with an integrated USB2UART chip. This board comes with an auto download circuit, RGB LED, DVP camera FPC connector that supports a small FPC camera, and a standard M12 camera. The MAIX bit is able to adjust the core voltage from 0.8V to 1.2V and overclock to 800MHz. This board includes an MCU LCD FPC connector to support a 2.4" QVGA LCD and a TF card slot. The MAIX combines custom hardware, open software, and AI algorithms to provide high-quality AI solutions.



The Sipeed MAIX bit suit with LCD, camera comes with accelerators and peripherals like AES accelerator, SHA256 accelerator, FFT accelerator, OTP, UART, WDT, IIC, SPI, I²S, TIMER, RTC, and PWM. The MAIX features a model compiler to compile models to its own model format and a RISC-V dual core 64bit CPU and a high-speed UART and JTAG interface for debugging.

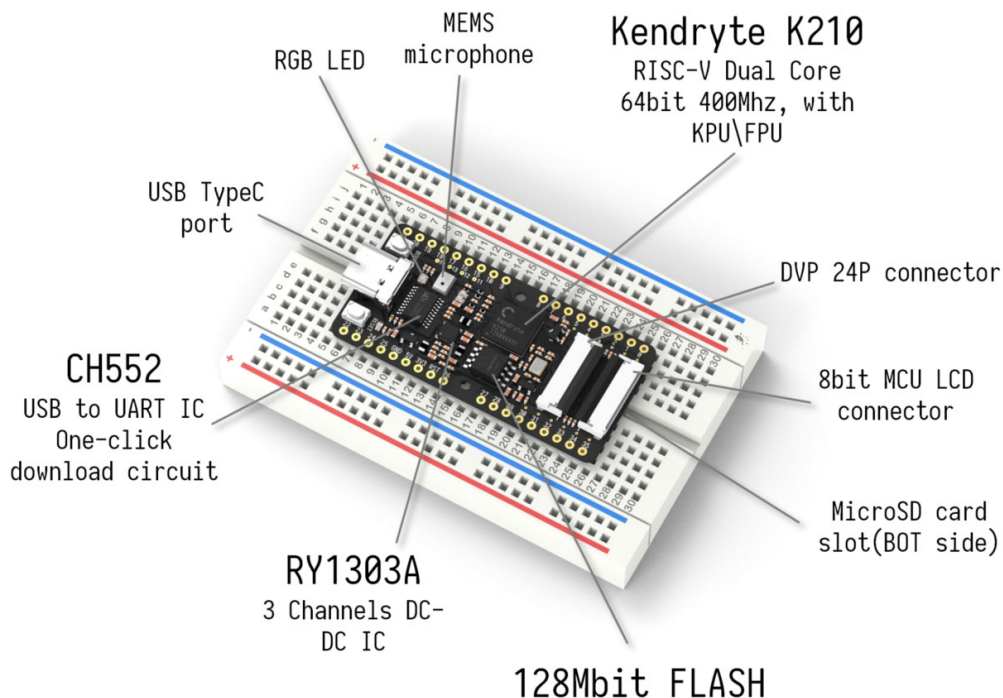
Features

- MAIX is twice of M1 size, 1x2" size, breadboard-friendly, and SMT-able
- Integrated USB2UART chip
- Auto download circuit
- DVP camera FPC connector (support for a small FPC camera and standard M12 camera)
- RGB LED
- MCU LCD FPC connector (support for 2.4" QVGA LCD)
- TF card slot
- MAIX Bit is able to adjust core voltage from 0.8V to 1.2V, overclock to 800MHz

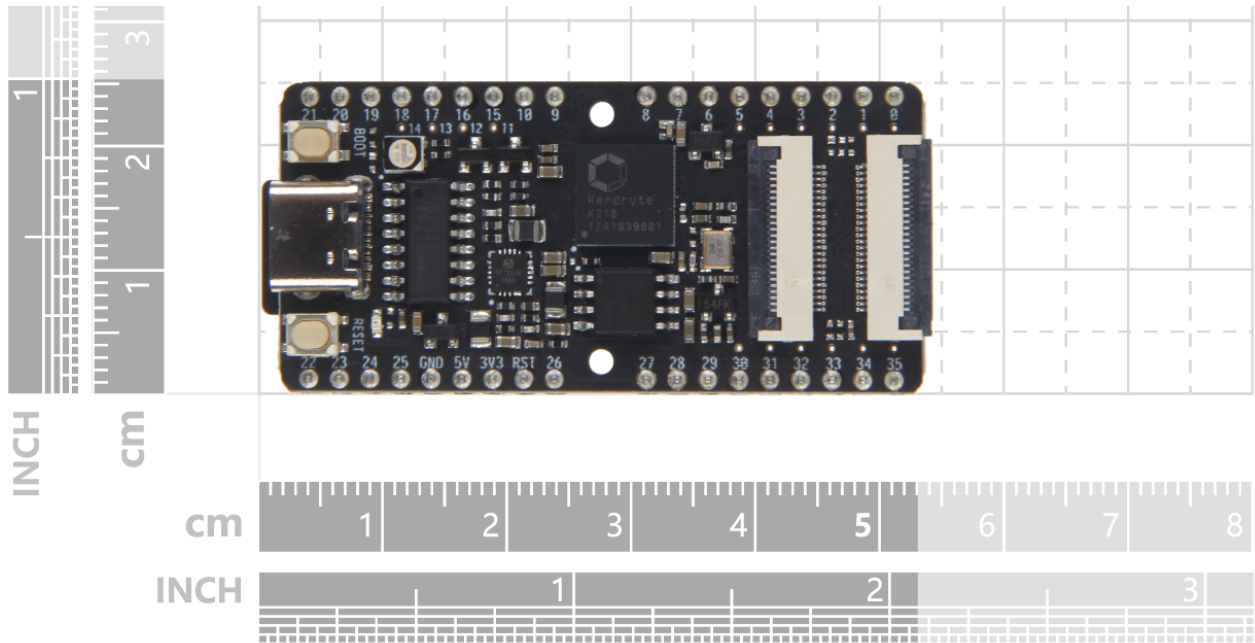
Specifications

- RISC-V dual core 64bit CPU, 400Mh adjustable:
 - Powerful dual-core 64-bit open architecture-based
 - processor with rich community resources
- Debugging support:
 - High-speed UART and JTAG interface for debugging
- GPIO interface:
 - All GPIOs connected to header 2x 20 2.54mm
- Micro SD card (TF card) slot:
 - Support self-elastic card holder
- One-click download circuit:
 - Just connect the USB type-C cable to complete the download
 - Onboard CH340, which supports a 2Mbps baud rate
- DVP camera connector:
 - 24P 0.5mm FPC connector
- LCD connector:
 - 8bit MCU LCD 24P 0.5mm FPC connector
- Button:
 - RST button and USB button

Board Overview



Board Dimensions



Mouser Part Number

[View Part](#)

To learn more, visit <https://www.mouser.com/new/seeed-studio/seeed-sipeed-maix-bit-suit/>