

EV03V90A

EV03V90A

Product Overview

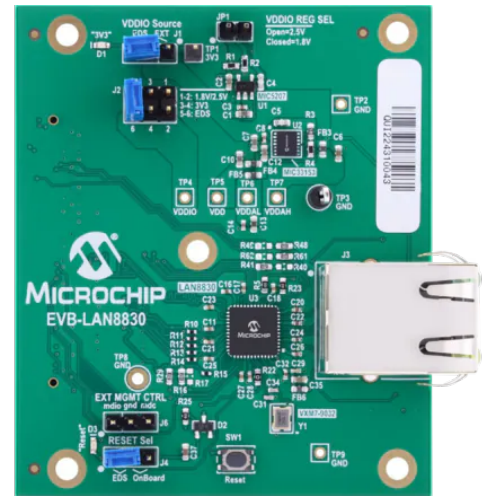
01-22-2025

For the most up-to-date information, visit www.mouser.com or the supplier's website.

Description

The Microchip EV03V90A Ethernet Evaluation Board is designed to demonstrate the capabilities of the LAN8830 Gigabit Ethernet transceivers. This Ethernet Development System (EDS) daughter card enables modular attachment to the host boards with the EDS interface, such as EVB-LAN7431-EDS PCIe to RGMII Networking adapter, allowing PC-based evaluation.

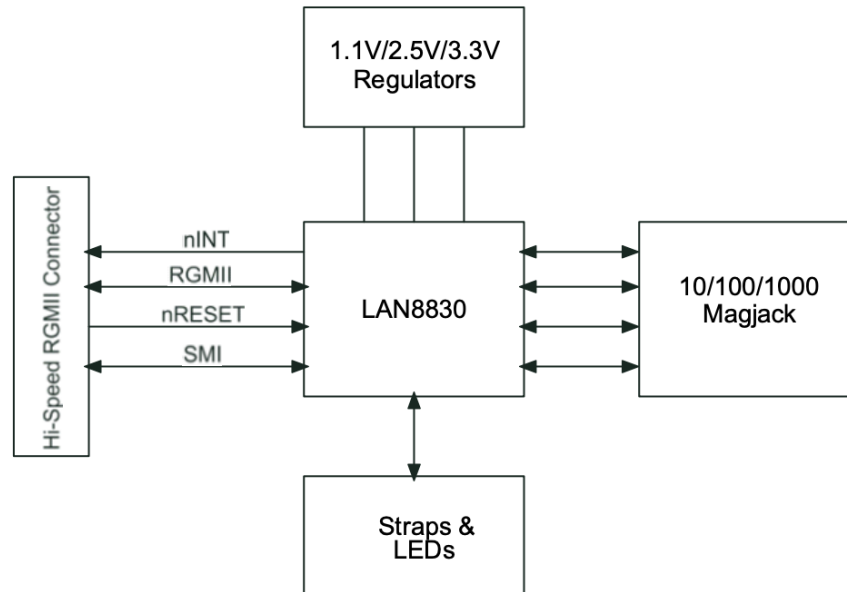
The device supports source or client modes for ordinary and boundary clock operations and a transparent clock per the IEEE Std 1588-2008 specification. End-to-end and peer-to-peer link delay mechanisms are supported, like one-step and two-step operations.



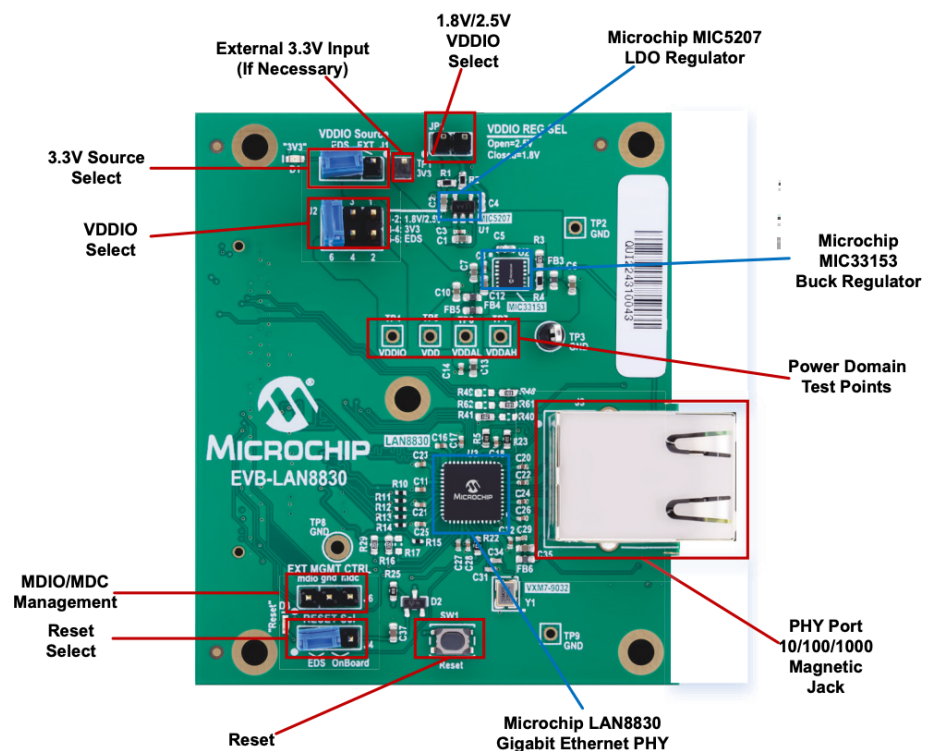
Features

- Modular EDS card enabling PC based (via the EVB-LAN7431-EDS PCIe to RGMII Networking adapter) or Embedded Processor based (via the SAMA5D3 EDS Board) development
- Linux drivers available on GitHub
- EtherSynch® technology IEEE 1588v2
- Energy-detect power-down mode for reduced power consumption when the cable is not attached
- Single (3.3V) supply operation
- Energy Efficient Ethernet (EEE) support with Low-Power Idle (LPI) mode and clock stoppage for 100BASE-TX/1000BASE-T and TX amplitude reduction with 10BASE-T-e option
- Wake-On-LAN (WOL) support with robust custom-packet detection
- 5x programmable LED outputs for link, activity, and speed

Block Diagram



Board Callouts



Learn More

- [Microchip Technology LAN8830 Gigabit Ethernet Transceivers with RGMII](#)
- [Microchip Technology EVB-LAN7431-EDS Evaluation Board](#)

Mouser Part Number

[View Part](#)

To learn more, visit <https://www.mouser.com/new/microchip/microchip-ev03v90a-eval-board/>