

# SEN0285 Gesture & Touch Sensor Module

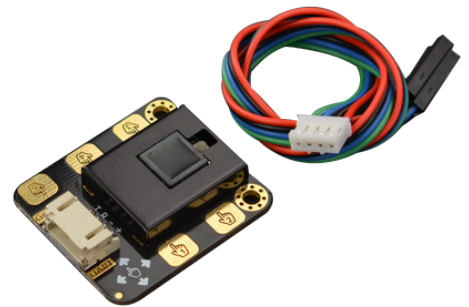
## Product Overview

6/17/2022

For the most up-to-date information, visit [www.mouser.com](http://www.mouser.com) or the supplier's website.

## Description

The SEN0285 Gesture and Touch Sensor Module integrates gesture recognition and touch detection functions in one device. The sensor module provides an adjustable detection range from 0cm to 30cm. The SEN0285 Gesture and Touch Sensor Module can connect to a microcontroller to detect 5-way touch signals and 7 kinds of gestures: move left, move right, move forward, move backward, pull up, pull down, pull, and remove. The module comes with the gesture recognition algorithm and provides simple and reliable data output. The sensor also can directly communicate with upper computer or microcontrollers such as Arduino and Raspberry Pi via serial port. The sensor is ideal for smart lamps, DIY intelligent cars, or interactive projects requiring gesture recognition.



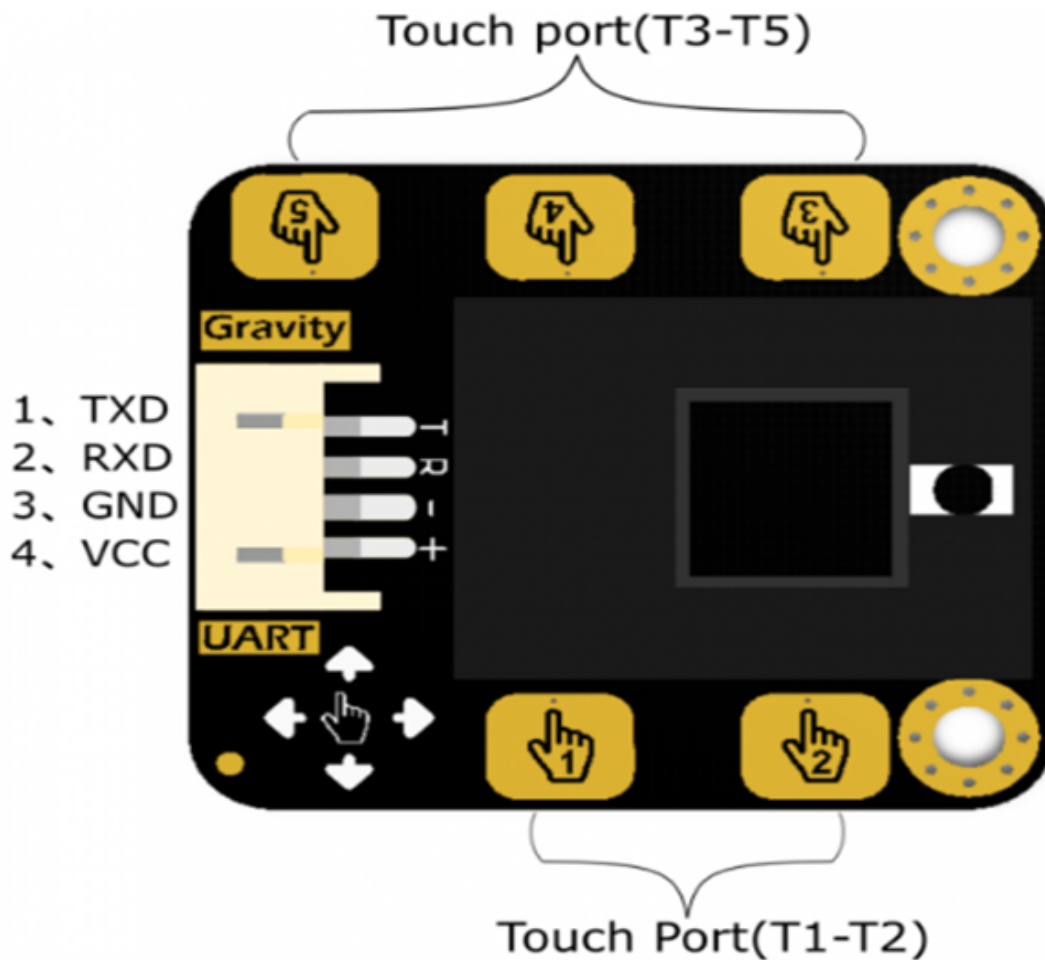
## Features

- Integrates gesture recognition and touch detects functions
- Detects 5-way touch signal and seven kinds of gestures (left, right, forward, backward, pull up, pull down, pull, and remove)
- Communicates with upper computer or micro-controllers such as Arduino and Raspberry Pi via serial port.
- Onboard 5-way touchpad detects touch

## Specifications

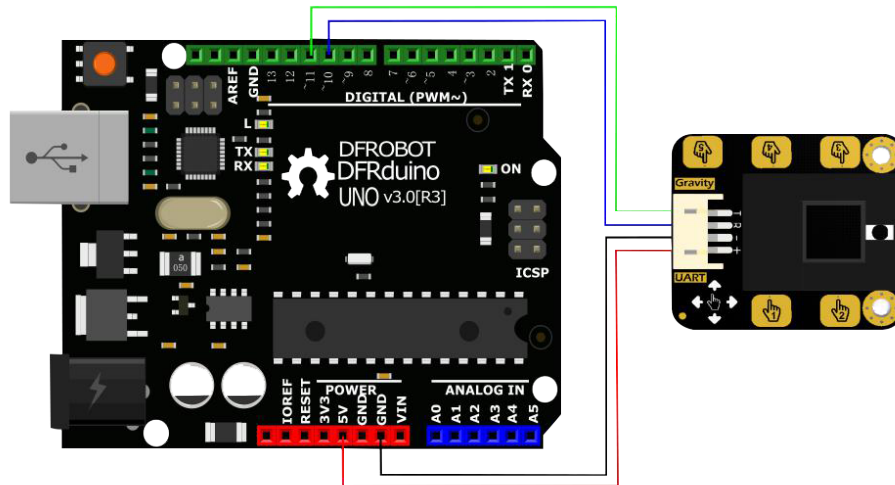
- 3.3V to 5V operating voltage range
- 56.3mA operating current
- 40μA current in sleep mode
- Serial port communication

## Pinout



Num	Label	Description	Color
1	TXD	Receive Data	Green
2	RXD	Transmit Data	Blue
3	GND	Ground	Black
4	VCC	Power Supply	Red
5	Touch Port	5-way Touch signal	

## Mouser Part Number



## Mouser Part Number

[View Part](#)

To learn more, visit <https://www.mouser.com/new/dfrobot/dfrobot-sen0285-sensor-module/>