

ESP32-S2-DevKitM-1 Development Board

DFR0813

Product Overview

11/30/2022

For the most up-to-date information, visit www.mouser.com or the supplier's website.

Description

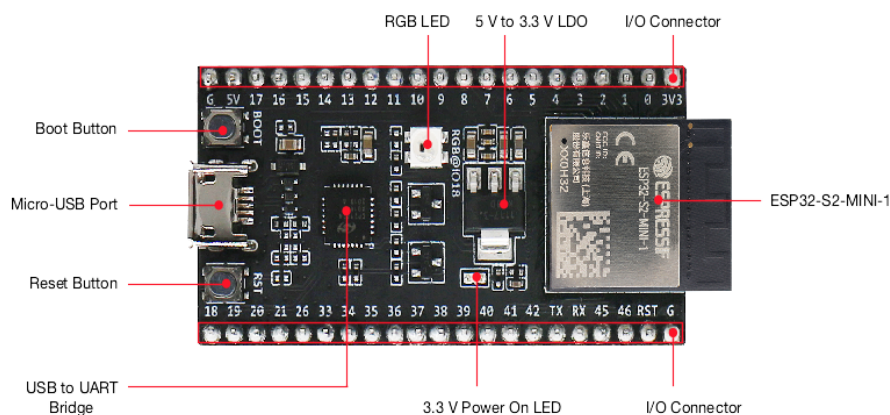
DFRobot ESP32-S2-DevKitM-1 Development Board is designed to evaluate the ESP32-S2-MINI-1 module. The ESP32-S2-MINI-1 module is a generic Wi-Fi® MCU module that integrates the ESP32-S2FH4 chip that offers a 4MB SPI flash. The development board features a USB to UART bridge, I/O connector, reset button, micro-USB port, boot button, RGB LED, and 5V to 3.3V LDO. The ESP32-S2-DevKitM-1 board operates from 3V to 3.6V power supply range, -40°C to 85°C operating temperature range, and provides 128KB ROM memory.



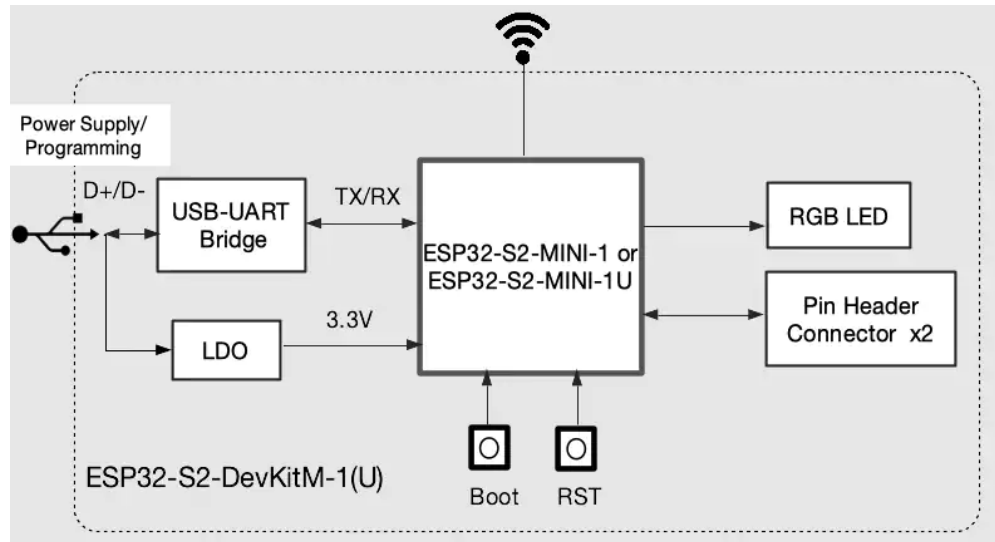
Features

- ESP32-S2FH4 chip, Xtensa single-core 32-bit LX7 microprocessor
- 128KB ROM
- 320KB SRAM
- 16KB RTC SRAM
- 40MHz crystal oscillator
- 4MB SPI flash
- 3V to 3.6V power supply range
- -40°C to 85°C operating temperature range

Board Overview



Block Diagram



Pin Layout

ESP32-S2-DevKitM-1

