

LSM6DSOX + LIS3MDL FeatherWing Precision Board

4565

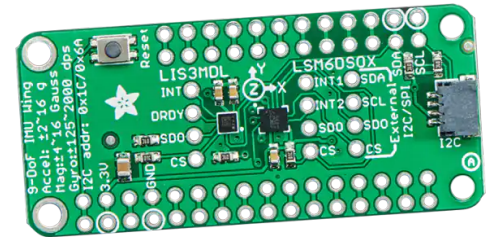
Product Overview

09/06/2022

For the most up-to-date information, visit www.mouser.com or the supplier's website.

Description

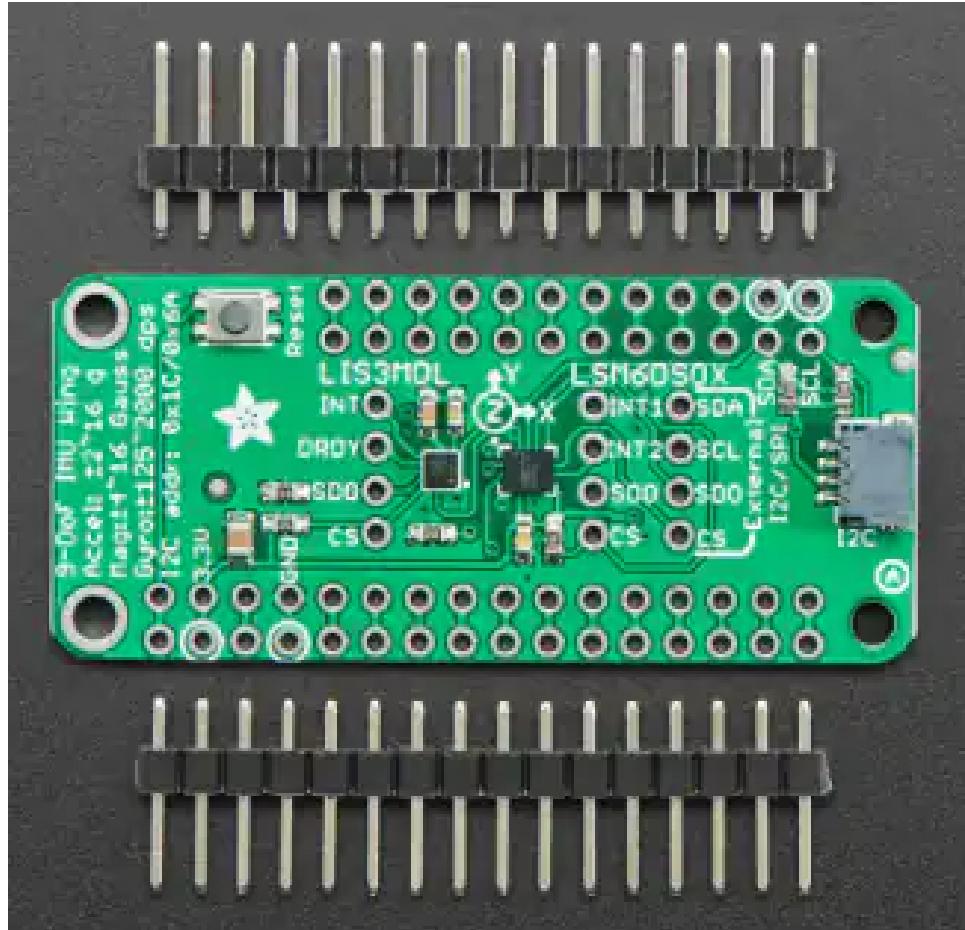
The LSM6DSOX + LIS3MDL FeatherWing Precision Board from Adafruit features a 6-Degree of Freedom (DoF) accelerometer + gyro and 3-axis magnetometer to provide 9-DoF data. The FeatherWing precision board is a multiple-function sensor development board. This board combines the LSM6DSOX 6-DoF IMU accelerometer + gyro and LIS3MDL 3-axis magnetometer. The LSM6DSOX accelerometer shows which direction is down towards the earth (by measuring gravity) or how fast the board is accelerating in 3D space. The 3-axis gyroscope can measure spin and twist. The LSM6DSOX and LIS3MDL sensors are connected over the shared I²C bus and can be used with all Feathers.



Features

- LSM6DSOX:
 - $\pm 2/\pm 4/\pm 8/\pm 16g$ @ 1.6Hz to 6.7KHz accelerometer update rate
 - Gyroscope:
 - $\pm 125/\pm 250/\pm 500/\pm 1000/\pm 2000dps$ at 12.5Hz to 6.7KHz
 - Continuous and single-conversion modes
 - Advanced pedometer, step detector, and step counter
 - Significant motion detection and tilt detection
 - Free-fall, wakeup, 6D/4D orientation, click, and double-click standard interrupts
 - Programmable finite state machine:
 - Accelerometer, gyroscope, and external sensors
 - Machine learning core
 - I²C address 0x6A or 0x6B
- LIS3MDL:
 - $\pm 4/\pm 8/\pm 12/\pm 16$ gauss selectable magnetic full scales
 - Continuous and single-conversion modes
 - 16-bit data output
 - Interrupt generator
 - I²C address 0x1C or 0x1E

Board Overview



Learn more about

- [Adafruit ISM330DHCX + LIS3MDL FeatherWing 9-DoF IMU](#)
- [Adafruit Feather Boards](#)

Mouser Part Number

[View Part](#)

To learn more, visit <https://www.mouser.com/new/adafruit/adafruit-featherwing-precision-board/>