

9-DoF LSM9DS1 Breakout Board

4634

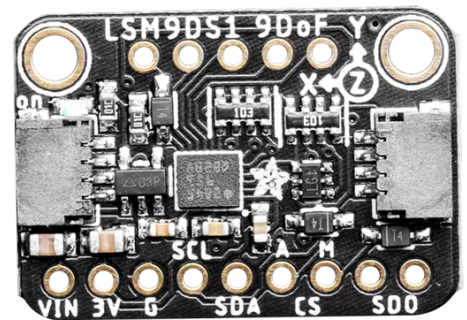
Product Overview

09/07/2022

For the most up-to-date information, visit www.mouser.com or the supplier's website.

Description

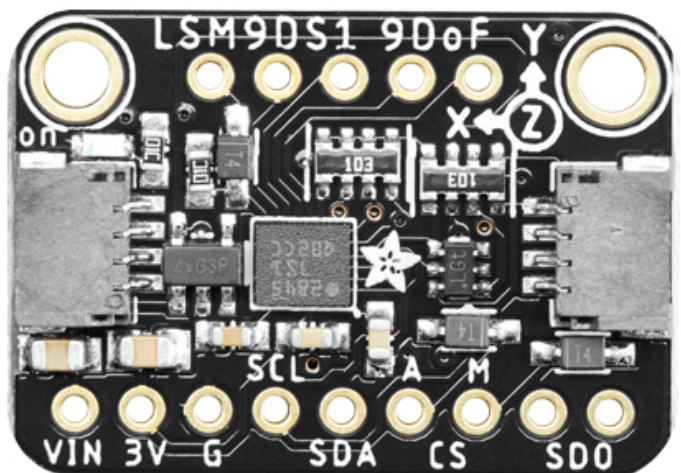
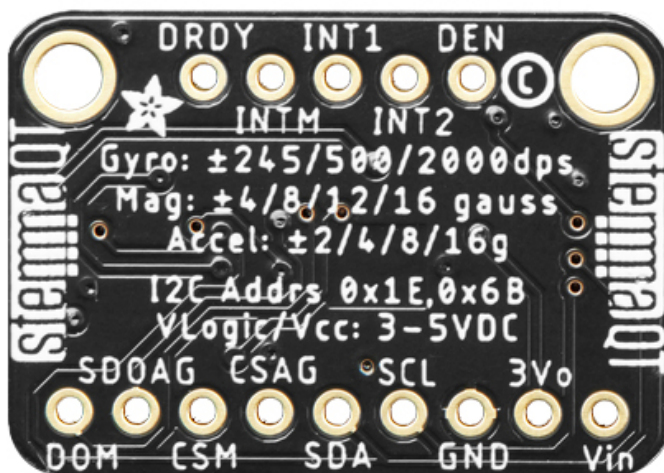
The 9-DoF LSM9DS1 Breakout Board from Adafruit is designed to provide motion, direction, and orientation sensing and comes with STEMMA QT ready for easy plug-n-play usage. This breakout board features 3-axis sensors such as an accelerometer, a magnetometer, and a gyroscope. The 3-axis accelerometer tells the downward direction towards the Earth and the board's acceleration in 3D space. The 3-axis magnetometer senses the direction of the strongest magnetic force that is used to detect the magnetic north. The 3-axis gyroscope measures spin and twist.



Features

- $\pm 2g/\pm 4g/\pm 8g/\pm 16g$ acceleration range
- $\pm 4/\pm 8/\pm 12/\pm 16$ gauss magnetometer range
- $\pm 245/\pm 500/\pm 2000$ dps gyroscope range
- Includes Qwiic compatible STEMMA QT connectors for the I²C bus

Board Overview



Learn more about

- [Adafruit ISM330DHCX + LIS3MDL FeatherWing 9-DoF IMU](#)
- [Adafruit Feather Boards](#)

Mouser Part Number

[View Part](#)

To learn more, visit <https://www.mouser.com/new/adafruit/adafruit-ism9ds1-breakout-board/>