

DFR0003 DFRduino Mega1280

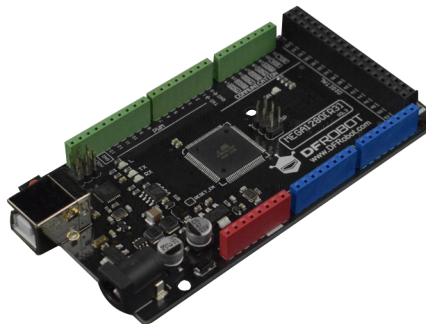
Product Overview

06/01/2022

For the most up-to-date information, visit www.mouser.com or the supplier's website.

Description

DFRobot DFRduino Mega1280 is a microcontroller board based on the ATmega1280. This board features 54 digital input/output pins, 16 analog inputs, 4 UARTs (hardware serial ports), a 16MHz crystal oscillator, a USB connection, a power jack, an ICSP header, and a reset button. The DFRduino Mega1280 also features 128KB FLASH space that allows complete replacement of the Arduino MEGA2560 in some of the intermediate and lightweight applications.

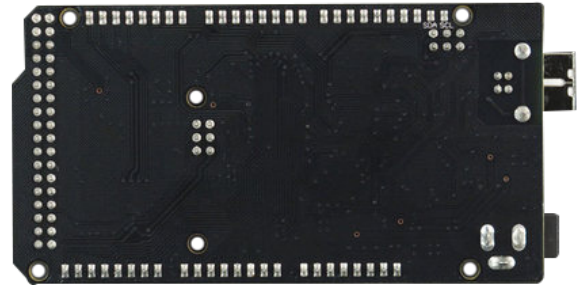
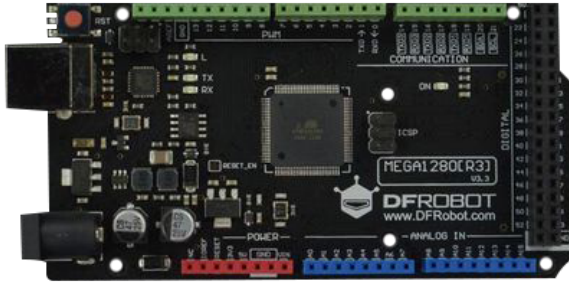


The DFRduino Mega1280 operates at 5V, has a 16MHz frequency, and is available in 108mm x 54mm dimensions. This board can be used in low-cost projects that require multiple sensors.

Specifications

- ATmega1280 microcontroller
- 5V operating voltage
- 3V to 16V (20V maximum) input voltage range
- 54 digital I/O pins
- 16 analog I/O pins
- 128KB Flash of which 4KB is used by the bootloader
- 8KB SRAM
- 4KB EEPROM
- 16MHz frequency

Kit Contents



Mouser Part Number

[View Part](#)

To learn more, visit <https://www.mouser.com/new/dfrobot/dfrobot-dfr0003-dfrduino-mega1280/>