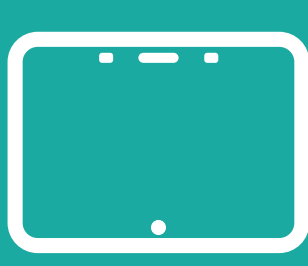


Technology That Makes More Sense

Makes smart devices smarter, optimizes performance and reduces power use



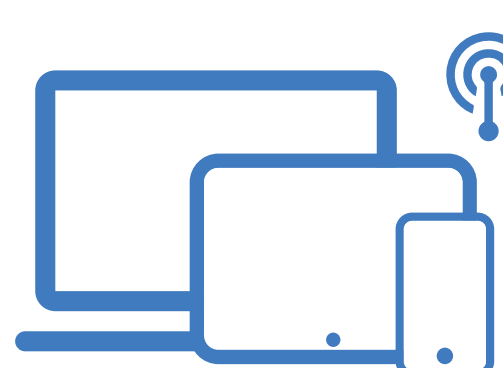
Semtech's PerSe, a first-of-its-kind, intelligent human sensing technology

that makes more sense for device performance, regulatory compliance, user safety, and experience.

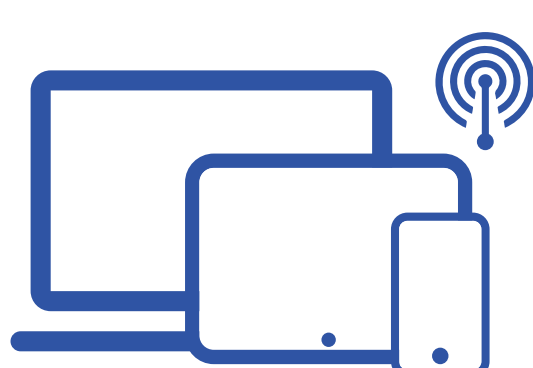


Only PerSe intelligently senses human presence to enable a smart response by the end devices, enhances connectivity, extends battery life and enables intuitive control.

The PerSe platform has three product lines:



PerSe **Connect**

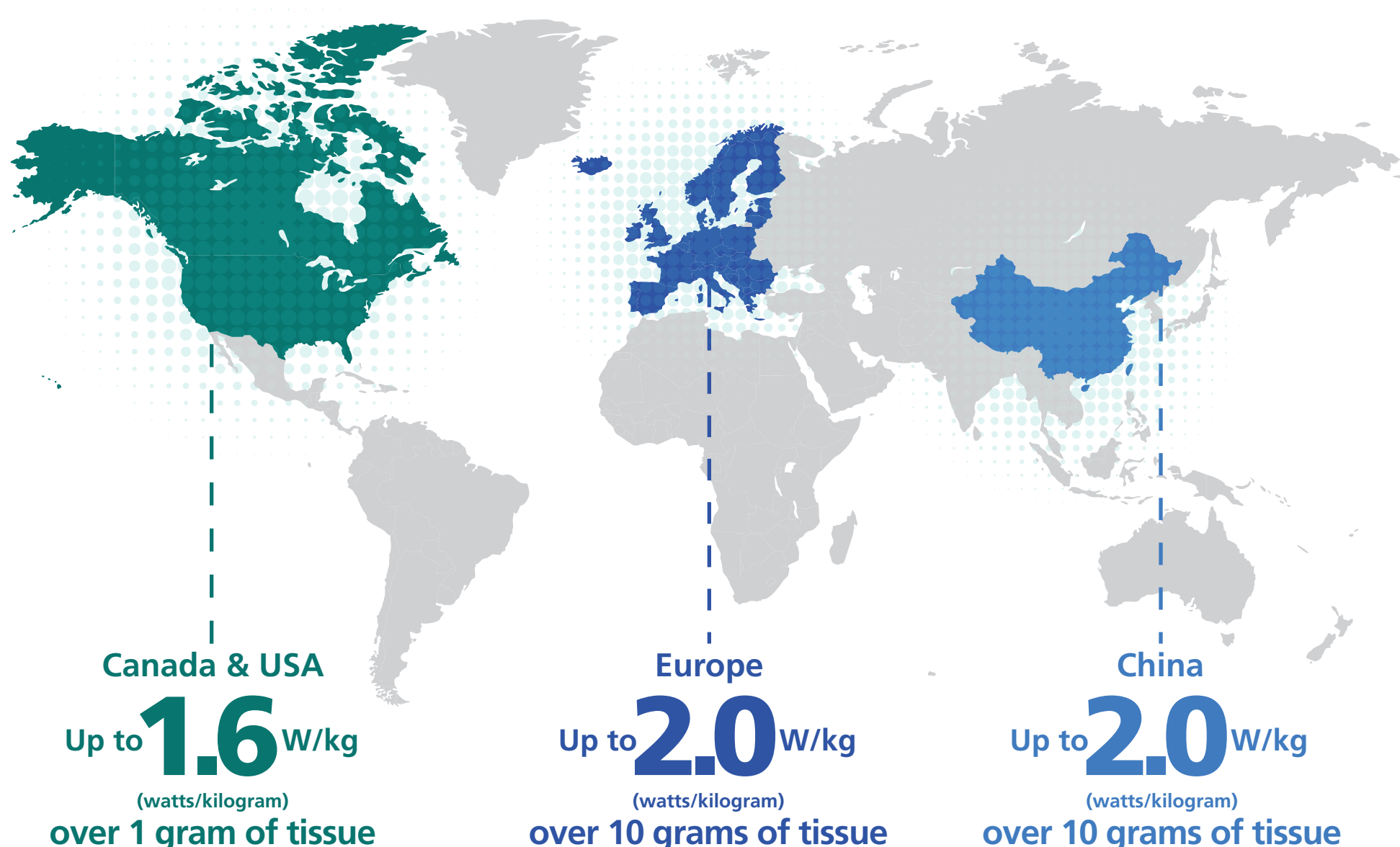


PerSe **Connect Pro**



PerSe **Control**

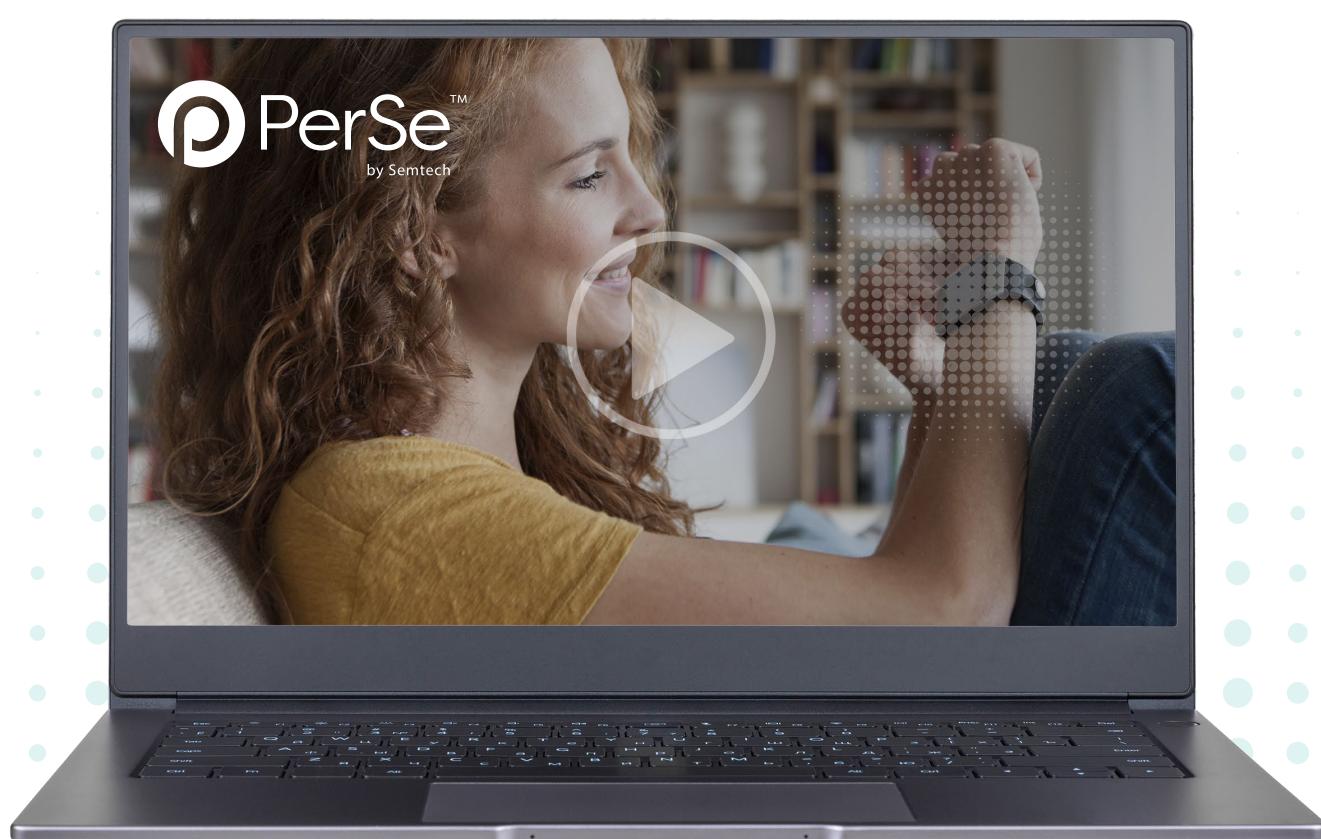
Countries have established specific absorption rate (SAR) safety standards that all wireless devices must meet. These standards limit the amount of RF a device can emit and vary between regions:



PerSe enables high quality connectivity in 5G/Wi-Fi 6 devices by optimizing RF power for best performance and regulatory compliance.

Benefits of PerSe:

- Makes smart devices smarter
- Provides better connectivity and safety compliance
- Enables intuitive control
- Extends battery life
- Offers best-in-class sensing performance
- Easily integrates into a variety of consumer devices



 Watch the PerSe Video

Visit semtech.com/PerSe for more information