

PO(M2) Series

Up to 6GHz Compact Push-On Lock Coaxial Connectors



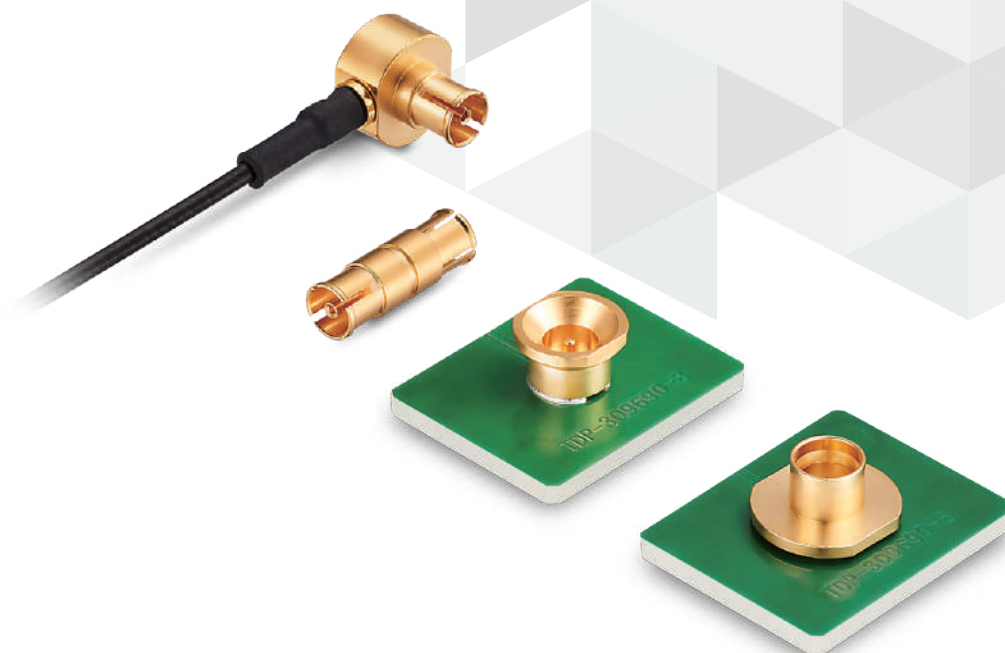
RF



Compact



Push On



Features

1. Connection Method

- 3 Piece Parallel Connection between Boards
(Plug Receptacle × 2 + Interposer)
- Cable Connection
(Plug Receptacle with Locking + Right Angle Jack)

2. Superior High-frequency Performance up to 6GHz

3. 3 Piece Parallel Connection between Boards, - Displacement Tolerance

X, Y Directions: $\pm 0.4\text{mm}$

Z Direction: 1mm Range

4. RoHS2 Compliant

Applications

For various high frequency equipment, Measuring instruments, Wireless communication devices and Base stations, etc.

Product Specifications

Nominal Characteristic Impedance	50 Ω	Operating Temperature	-40 to +85°C (95% RH Max.)
Frequency Range	0 to 6GHz	Storage Temperature Range	-20 to +70°C (90% RH Max.)

Item	Specification	Conditions
Insulation Resistance	500M Ω Min.	Measured at 100V DC
Withstanding Voltage	No insulation breakdown.	250V AC for 1 min.
Contact Resistance	20m Ω Max. (Center) 20m Ω Max. (Outer)	Measured at 100mA Max. (DC OR 1000Hz)
V.S.W.R.	1.4 Max.	0 to 6GHz
Vibration	No electrical discontinuity of 1 μ s min. No damage, cracks or parts dislocation.	Frequency: 10 to 500Hz, single amplitude of 0.75mm, acceleration of 100m/s ² , for 10 cycles in the direction of each of the 3 axis.
Shock	No electrical discontinuity of 1 μ s min. No damage, cracks or parts dislocation.	Acceleration of 500m/s ² , 11ms duration, sine half-wave waveform, 3 cycles in each of 3 axis.
Humidity	No damage, cracks or parts dislocation. Insulation Resistance: 10M Ω Min. (High Temperature) 500M Ω Min. (When Dry)	Left for 10 cycles (240 hours) in an environment with the temperature ranging from -10 to +65°C and the humidity ranging from 90 to 96%.
Thermal Shock	No damage, cracks or parts dislocation.	Temperature: -40°C \rightarrow - \rightarrow +85°C \rightarrow - Time: 30min. \rightarrow 3min. \rightarrow 30min. \rightarrow 3min. 5 cycles
Mating Durability	Contact Resistance: 40m Ω Max. (Center) 40m Ω Max. (Outer)	100 cycles
Salt Spray	No corrosion that impairs function	5% salt water solution, 48 hours

Materials / Finish

Part		Material	Finish
Shell	Interposer/Jack	Beryllium Copper/Brass	Gold Plating/Nickel Plating
	Plug Receptacle	Brass	Gold Plating
Insulator		PTFE	-
Male Contact		Brass	Gold Plating
Female Contact		Beryllium Copper	Gold Plating

Product Number Structure

Refer to the chart below when determining the product specifications from the product number.
Please select from the product numbers listed in this catalog when placing orders.

PO(M2) - # - #

1

2

3

■Standard Type


1 Series Name	PO(M2)
2 Connector Type	A-JJ: Interposer LJ: Right Angle Jack* PR(LD): Plug Receptacle With Locking PR(SB): Plug Receptacle Without Locking
3 Compatible Cable, Mounting Style or Dimensions	1500: Distance between Boards 15mm 088: φ 1.37 Coaxial Cable SMT: Printed Circuit Board Surface Mounting Compatible

*This connector is not sold separately. Please purchase as a cable assembly.


Combination

Plug

■Plug Receptacle (With Locking)
PO(M2)-PR(LD)-SMT




■Plug Receptacle (Without Locking)
PO(M2)-PR(SB)-SMT




Jack

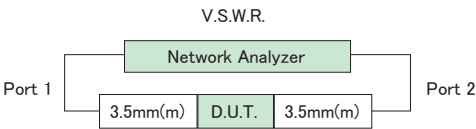
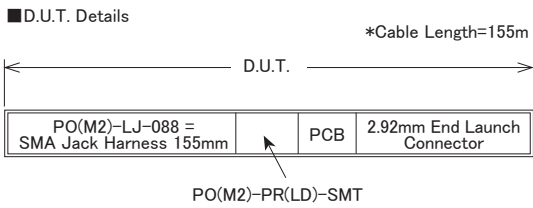
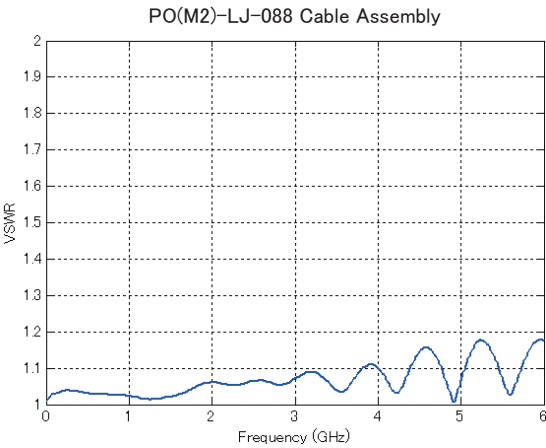
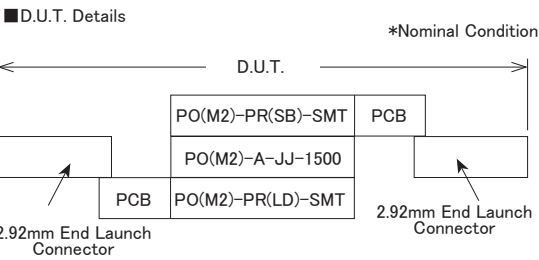
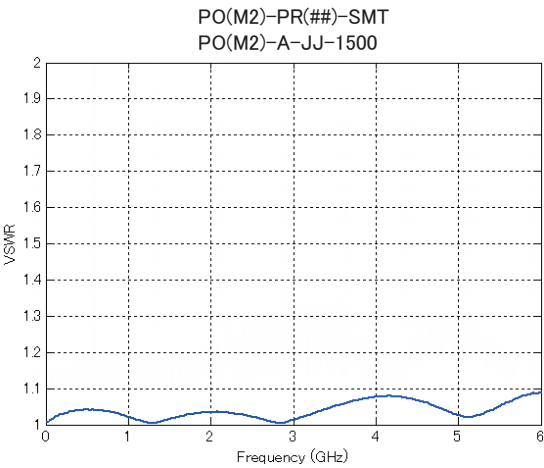
■Right Angle Jack
PO(M2)-LJ-088



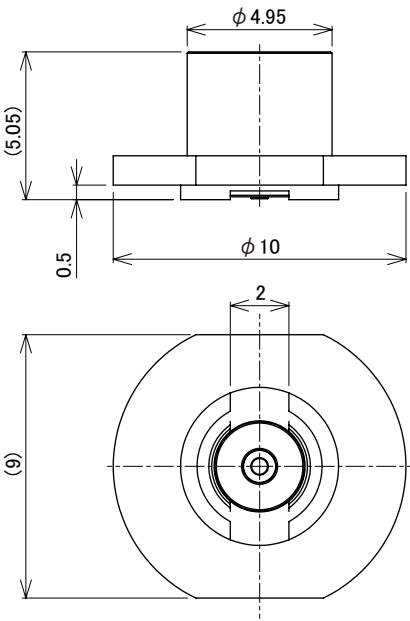
■Interposer (In-line Adapter)
PO(M2)-A-JJ-1500



High Frequency Characteristic (TYPICAL)

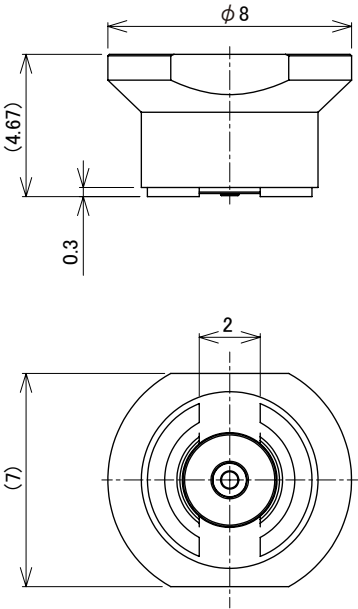


Plug Receptacle



Unit : mm

Part No.	HRS No.	Purchase Unit
PO(M2)-PR(LD)-SMT	CL0338-1505-0-00	1,000pcs per reel
PO(M2)-PR(LD)-SMT(01)	CL0338-1505-0-01	20pcs per bag

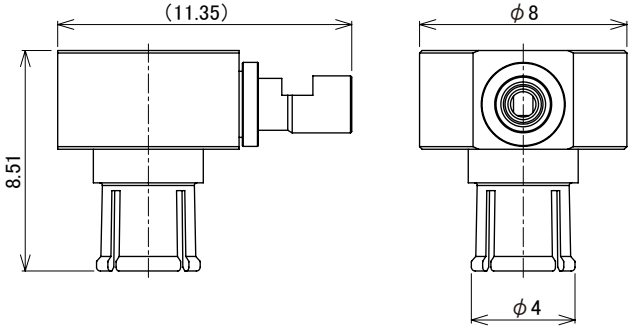


Unit : mm

Part No.	HRS No.	Purchase Unit
PO(M2)-PR(SB)-SMT	CL0338-1504-0-00	1,000pcs per reel
PO(M2)-PR(SB)-SMT(01)	CL0338-1504-0-01	20pcs per bag

Right Angle Jack

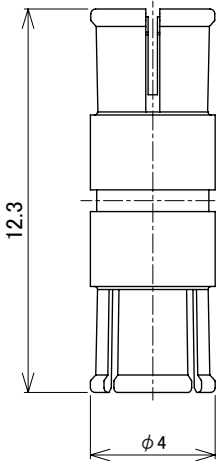
Jacks can be ordered only as terminated cable assemblies



Unit : mm

Part No.	HRS No.	Purchase Unit
PO(M2)-LJ-088	-	-

Interposer (In-line Adapter)



Unit : mm

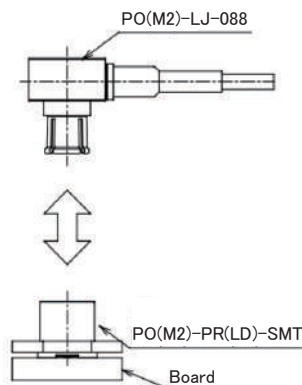
Part No.	HRS No.	Purchase Unit
PO(M2)-A-JJ-1500	CL0338-1503-0-00	50pcs per tray
PO(M2)-A-JJ-1500(01)	CL0338-1503-0-01	20pcs per bag

Usage Precautions

Mating/Unmating

When inserting or removing the PO(M2) connectors, be sure to align them straight with the connecting axes of the connectors.

Diagonal insertion and removal may cause deformation or damage to the connectors.



While Taking into Consideration

Specifications mentioned in this catalog are reference values.

When considering to order or use this product, please review the Drawing and Product Specifications sheets.

Use an appropriate cable when using the connector in combination with cables.

If considering usage of a non-specified cable, please contact your sales representative.

If assembly process is done by jigs & tools which are not identified by Hirose, the warranty of the product may be affected.

If considering usage for below mentioned applications, please contact your sales representative.

In cases where the application will demand a high level of reliability, such as automotive, medical instruments, public infrastructure, aerospace/defense etc. Hirose must review before assurance of reliability can be given.

HIROSE



HIROSE ELECTRIC CO.,LTD.

2-6-3 Nakagawa Chuoh, Tsuzuki-Ku, Yokohama-Shi 224-8540, JAPAN
<https://www.hirose.com>