

Commercial Grade BNC Tee Adapter Female/Male/Female



PE910080

Configuration

- BNC Male Connector 1
- BNC Female Connector 2
- BNC Female Connector 3
- 50 Ohms Impedance
- Commercial Grade Design
- Tee Body Geometry

Features

- Gold Plated Brass Contact

Applications

- General Purpose Test

Description

Pasternack's PE910080 BNC Tee adapter male-female-female is part of our full line of RF components available for same-day shipping. Our BNC tee adapter has a male-female-female gender configuration in a commercial grade design. Tee adapters (also called tee connectors) are three port devices that can be used to split or combine a signal. Unlike power dividers/combiners, however, they do not provide matched impedance at all ports.

RF adapters are often used to enable connections between two connector types that would otherwise not mate. Certain adapter configurations can also be used to protect connectors on expensive equipment where the number of connect/disconnect cycles is high. An RF, microwave or millimeter wave adapter is connected to the equipment, and the commonly changed connection is made with the adapter which can be easily replaced when it wears out after high usage; such adapters are referred to as connector savers. Pasternack also offers bulkhead, panel mount, hermetically sealed, reverse polarity, and isolated ground adapter varieties to serve all of your RF, microwave and millimeter wave needs.

Electrical Specifications

Description	Minimum	Typical	Maximum	Units
Impedance		50		Ohms

Mechanical Specifications

Size

Length	1.28 in [32.51 mm]
Width	1.07 in [27.18 mm]
Height	0.44 in [11.18 mm]
Weight	1.00 lbs [453.59 g]

Description	Connector 1	Connector 2
Polarity	Standard	Standard

Material Specifications

Description	Connector 1		Connector 2	
	Material	Plating	Material	Plating
Type	BNC Male		BNC Female	
Contact	Brass	Gold	Brass	Gold

Commercial Grade BNC Tee Adapter Female/Male/Female



PE910080

Material Specifications

Description	Connector 1		Connector 2	
	Material	Plating	Material	Plating
Insulation	POM		POM	
Outer Conductor	Brass	Nickel	Brass	Nickel
Body	Brass	Nickel	Brass	Nickel
Coupling Nut	Brass	Nickel		

Compliance Certifications (see [product page](#) for current document)

Commercial Grade BNC Tee Adapter Female/Male/Female from Pasternack Enterprises has same day shipment for domestic and International orders. Our RF, microwave and millimeter wave products maintain a 99.4% availability and are part of the broadest selection in the industry.

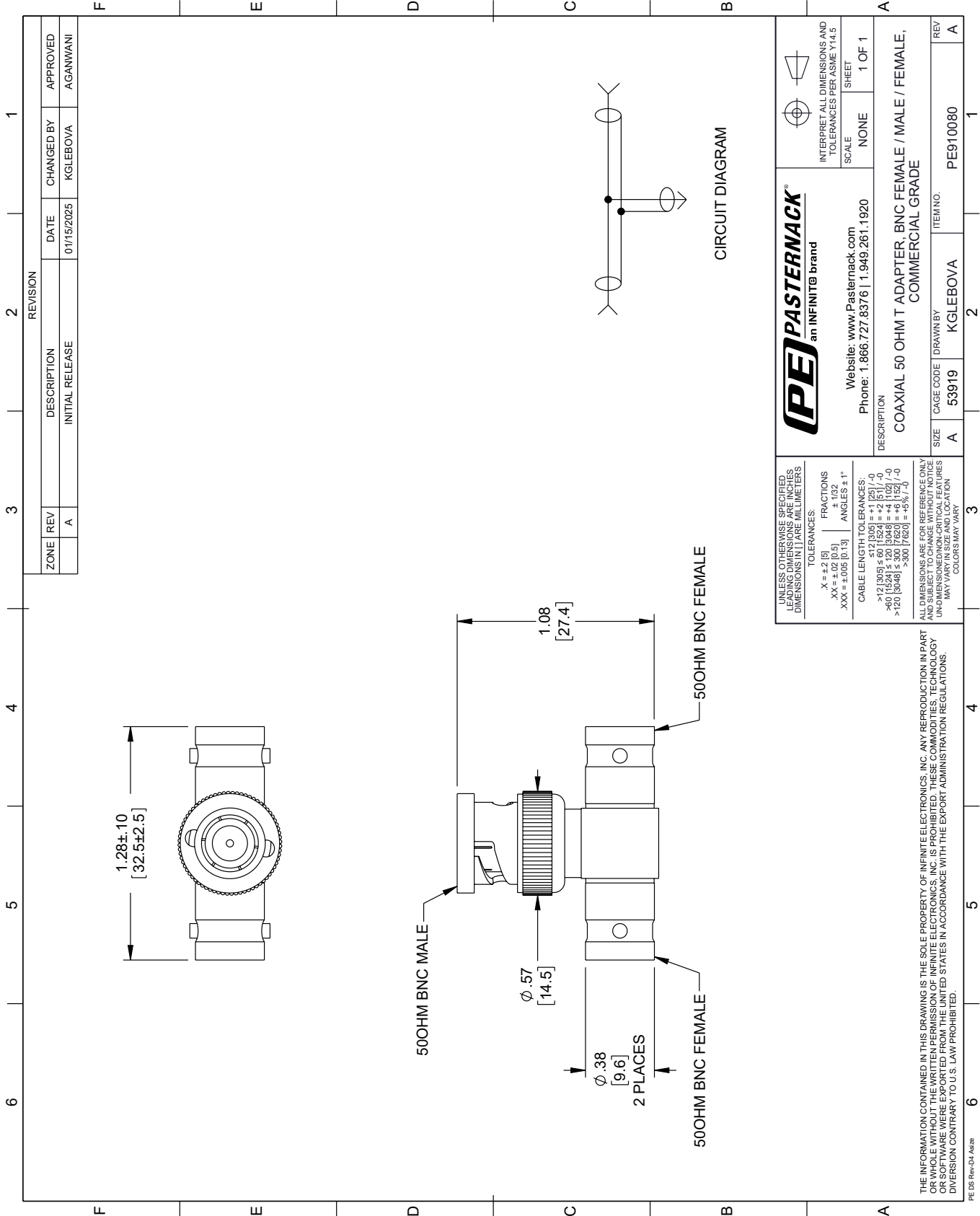
Click the following link (or enter part number in "SEARCH" on website) to obtain additional part information including price, inventory and certifications: [Commercial Grade BNC Tee Adapter Female/Male/Female PE910080](#)

URL: <https://www.pasternack.com/bnc-tee-adapter-male-female-female-pe910080.html>

The information contained within this document is accurate to the best of our knowledge and representative of the part described herein. It may be necessary to make modifications to the part and/or the documentation of the part in order to implement improvements. Pasternack Enterprises reserves the right to make such changes as required. Unless otherwise stated, all specifications are nominal. Pasternack Enterprises does not make any representation or warranty regarding the suitability of the part described herein for any particular purpose, and Pasternack Enterprises does not assume liability arising out of the use of any part or document.

PE910080 CAD Drawing

Commercial Grade BNC Tee Adapter Female/Male/Female



REVISION		DATE	CHANGED BY	APPROVED	
ZONE	REV	DESCRIPTION	DATE	CHANGED BY	APPROVED
	A	INITIAL RELEASE	01/15/2025	KGLEBOVA	AGANWANI

PE PASTERNAK
an INFINITI® brand

Website: www.Pasternack.com
Phone: 1.866.727.8376 | 1.949.261.1920

INTERPRET ALL DIMENSIONS AND TOLERANCES PER ASME Y14.5

SCALE: NONE
SHEET: 1 OF 1

DESCRIPTION: COAXIAL 50 OHM T ADAPTER, BNC FEMALE / MALE / FEMALE, COMMERCIAL GRADE

SIZE	CAGE CODE	DRAWN BY	ITEM NO.
A	53919	KGLEBOVA	PE910080

REV: A

UNLESS OTHERWISE SPECIFIED, LEADING DIMENSIONS ARE IN INCHES. DIMENSIONS IN [] ARE MILLIMETERS.

TOLERANCES:

X = ±.2 [5]	FRACTIONS ± 1/32
.XX = ±.02 [0.5]	ANGLES ± 1°
.XXX = ±.005 [0.13]	

CABLE LENGTH TOLERANCES:

<12 [305]	±.005 [0.125]
>12 [305] ≤ 60 [1524]	±.01 [0.25]
>60 [1524] ≤ 120 [3048]	±.02 [0.51]
>120 [3048] ≤ 300 [7620]	±.03 [0.76]
>300 [7620]	±.05 [1.27]

ALL DIMENSIONS ARE FOR REFERENCE ONLY. UNDIMENSIONED NON-CRITICAL FEATURES MAY VARY IN SIZE AND LOCATION. COLORS MAY VARY.

THE INFORMATION CONTAINED IN THIS DRAWING IS THE SOLE PROPERTY OF INFINITE ELECTRONICS, INC. ANY REPRODUCTION IN PART OR WHOLE WITHOUT THE WRITTEN PERMISSION OF INFINITE ELECTRONICS, INC. IS PROHIBITED. THESE COMMODITIES, TECHNOLOGY OR SERVICES ARE EXPORTED FROM THE UNITED STATES IN ACCORDANCE WITH THE EXPORT ADMINISTRATION REGULATIONS. DIVERSION CONTRARY TO U.S. LAW PROHIBITED.

PE DS Rev-04 Add2