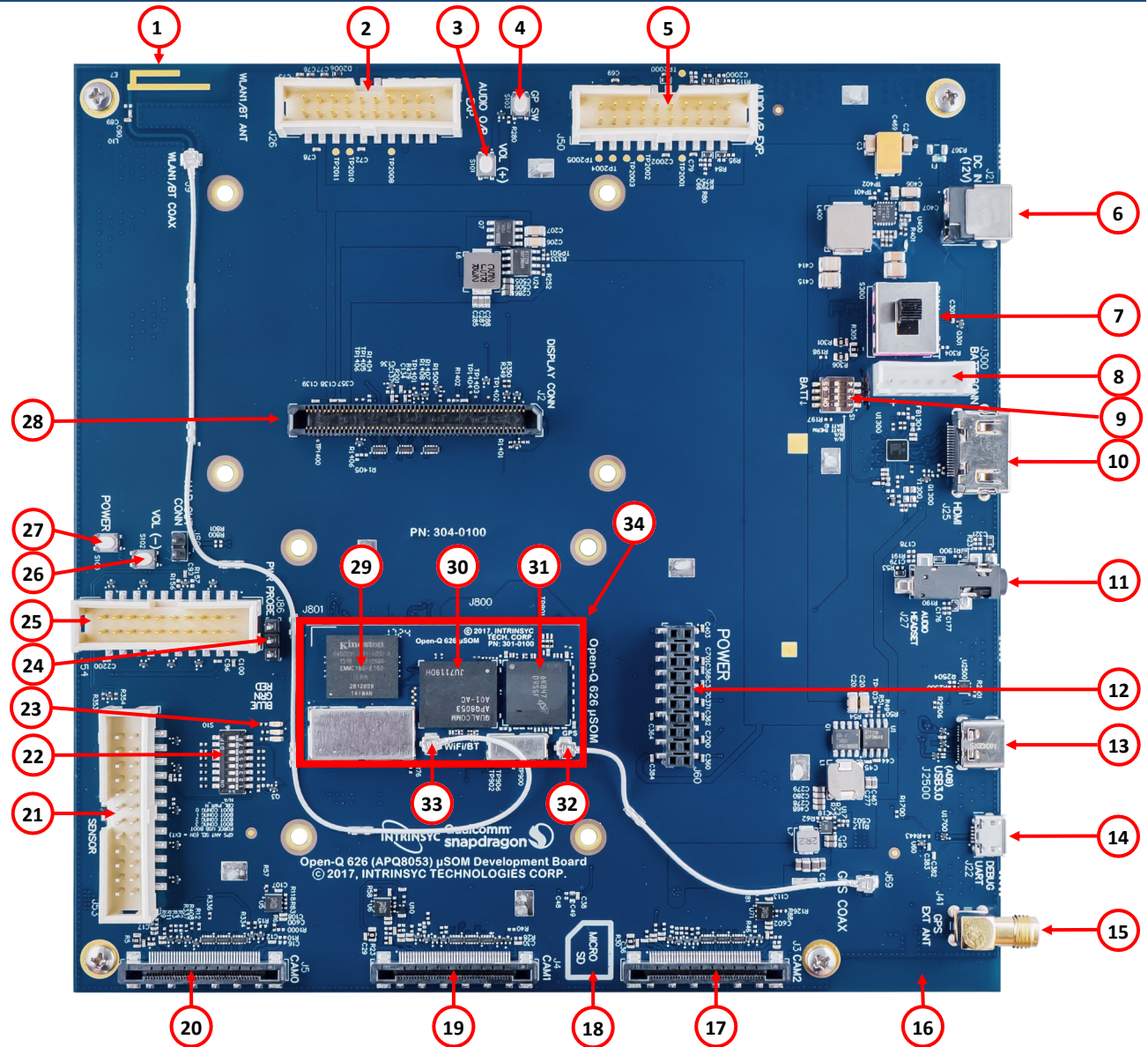


Package Contents

1. Open-Q™ 626 μ SOM with APQ8053 processor
2. Open-Q™ 626 Carrier board
3. STEVAL_MKI128V6 sensor accessory board
4. AC Power Adapter
5. HDMI Video Cable
6. 4.5" FWVGA MIPI DSI LCD/touchscreen (optional accessory)

- | | |
|----------------------------------|--|
| 1. WLAN PCB Antenna | 24. SOM power measurement header |
| 2. Audio output expansion header | 25. GPIO expansion header |
| 3. Volume + button | 26. Volume - button |
| 4. General Purpose button | 27. Power button |
| 5. Audio input expansion header | 28. MIPI DSI LCD/touchscreen connector to interface with Intrinsyc display adapter |
| 6. 12V DC input jack | 29. 16GB eMMC flash memory |
| 7. Power source switch | 30. APQ8053 CPU |
| 8. Battery connector | 31. 2GB LPDDR3 RAM memory |
| 9. Battery charge config switch | 32. GPS antenna connector U.FL |
| 10. HDMI video output | 33. WLAN antenna connector U.FL |
| 11. 3.5 mm headset jack | 34. Open-Q 626 μ SOM (micro System on Module) |
| 12. Power header | |
| 13. USB Type-C connector | |
| 14. Debug UART (USB MicroB) | |
| 15. GPS ext. ant. SMA connector | |
| 16. GPS PCB Antenna (on bottom) | |
| 17. MIPI camera 2 connector | |
| 18. Micro SD slot (on bottom) | |
| 19. MIPI camera 1 connector | |
| 20. MIPI camera 0 connector | |
| 21. Sensor board header | |
| 22. Configuration DIP switches | |
| 23. 3 x LEDs | |





Open-Q™ 626 μSOM Development Kit Quick Start Guide



Development Kit Setup

- 1. At a static-safe workstation, remove the development kit board carefully from the anti static bag**
- 2. If you do not have the optional LCD then connect the HDMI cable from the development kit (#10) to an HDMI display.**
- 3. Connect the Power Adapter to the 12V DC Jack (#6), then press and hold the power button (#27) for approximately 3 seconds. If using the LCD you will see the boot menu appear first, followed by the Intrinsyc logo as the board boots up. If using HDMI the screen will remain blank for approximately 45 seconds before the Android screen appears.**
- 4. Documentation and software**

To access the documentation (schematics, user guides, programming guides, tech notes...), platform BSP software and much more, please register at:

<http://tech.intrinsyc.com>



Development Kit Support

For more information or assistance, you can contact us at:

<https://www.intrinsyc.com/contact-support>

Intrinsyc also provides technical information and videos on Snapdragon processors at:

<http://www.intrinsyc.com/resources>

Should you require additional technical support for your Development Kit you can purchase a block of technical support hours from the Intrinsyc store:

<https://www.intrinsyc.com/support>

Thank you for purchasing the Open-Q 626 Development Kit

The Intrinsyc Team