

6.4" [164 mm]



4.3" [109 mm]

The SK6 easily converts just about any rotary encoder into the perfect off-the-shelf 400-inch linear position sensor for just about any application ranging from factory automation equipment to hydraulic lift tables and anything else in between.

This model offers the ultimate ease-of-use, compact design and user flexibility. Designed for popular 2½ inch square flange and 58mm diameter synchro-mount flange encoder styles, the SK6 comes with everything you need to attach your own encoder. Also included is a stainless steel mounting bracket which lets the user easily change measuring cable orientation to one of the 4 different directions.

SK6

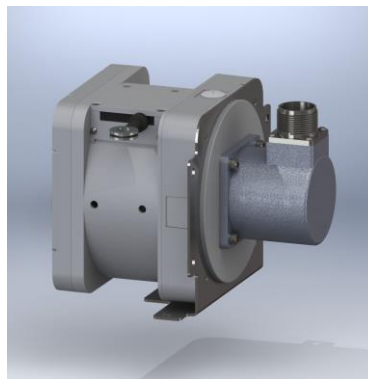
Cable Actuated Encoder Reel

Converts Rotary Encoder to Linear Position Sensor
Use with Popular Square Flange & Servo Mount Style
User Adjustable Measuring Cable Orientation

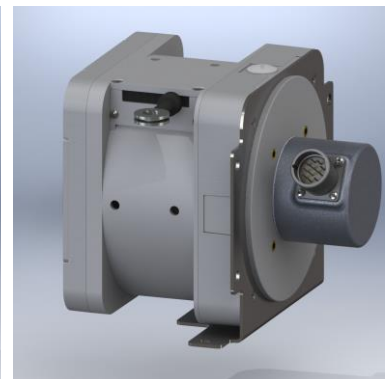
IN STOCK for Quick Delivery!

Specifications

Stroke Range	400 inches (10.2 m)
Rotary to Linear Conversion Ratio	1 turn = 15.020 inches
Accuracy	.04% FS.
Measuring Cable	.031-inch dia. bare stainless steel
Maximum Cable Velocity	60 inches per second
Maximum Cable Acceleration	5 g
Measuring Cable Tension	23 oz. (6.4 N) ±40%
Operating Temperature	-40° to 185° F (-40° to 85° C)

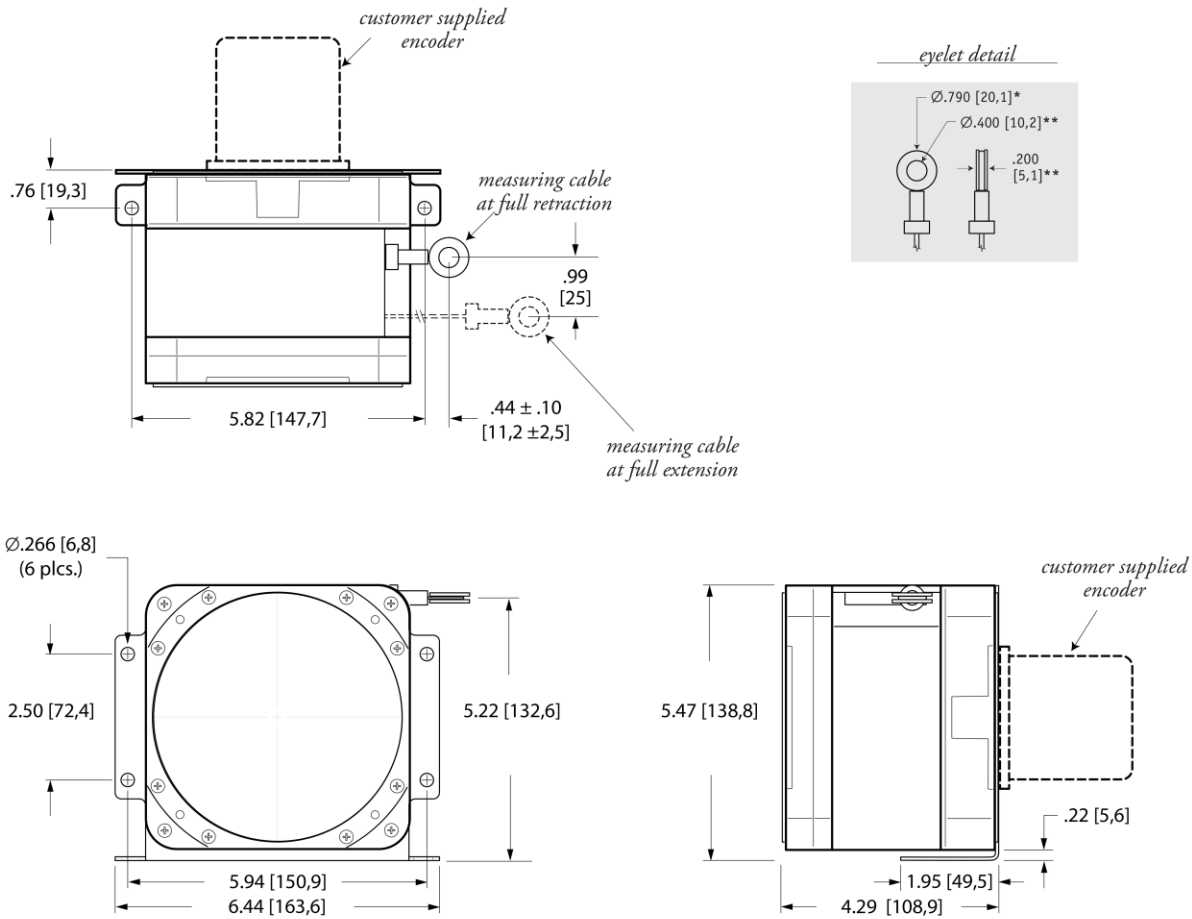


**2.5-inch
Square Flange
Style**



**Ø58 mm
Synchro-Mount
Style**

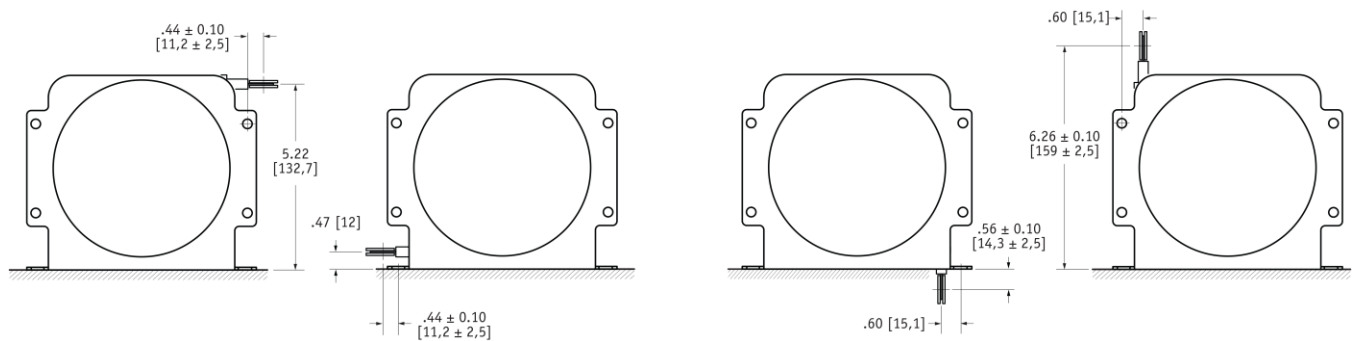
Outline Drawing



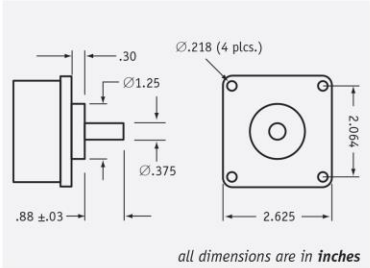
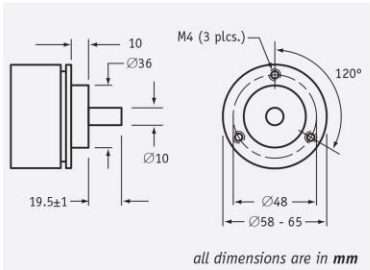
DIMENSIONS ARE IN INCHES [MM]
tolerances are 0.04 IN. [1,0 MM] unless otherwise noted.

* tolerance = +.005 -.001 [+0,1 -0,0]
** tolerance = +.005 -.005 [+0,1 -0,1]

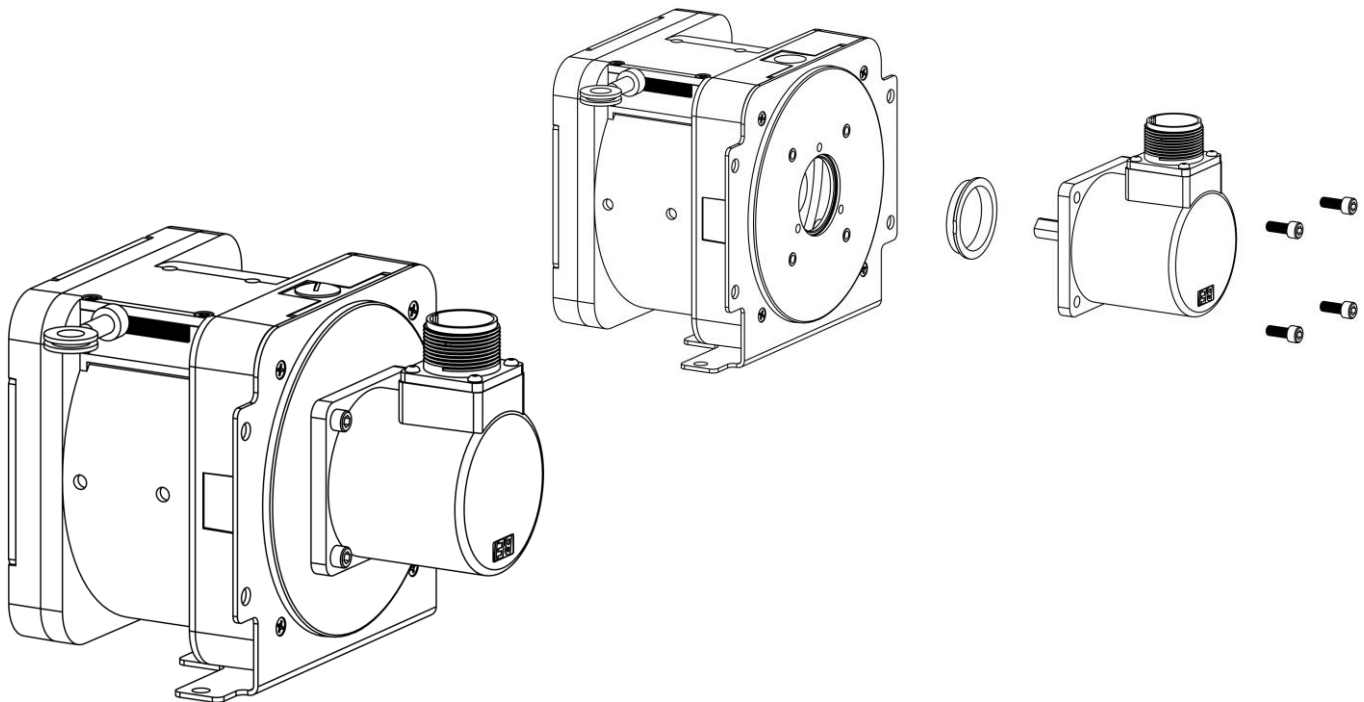
Mounting Options



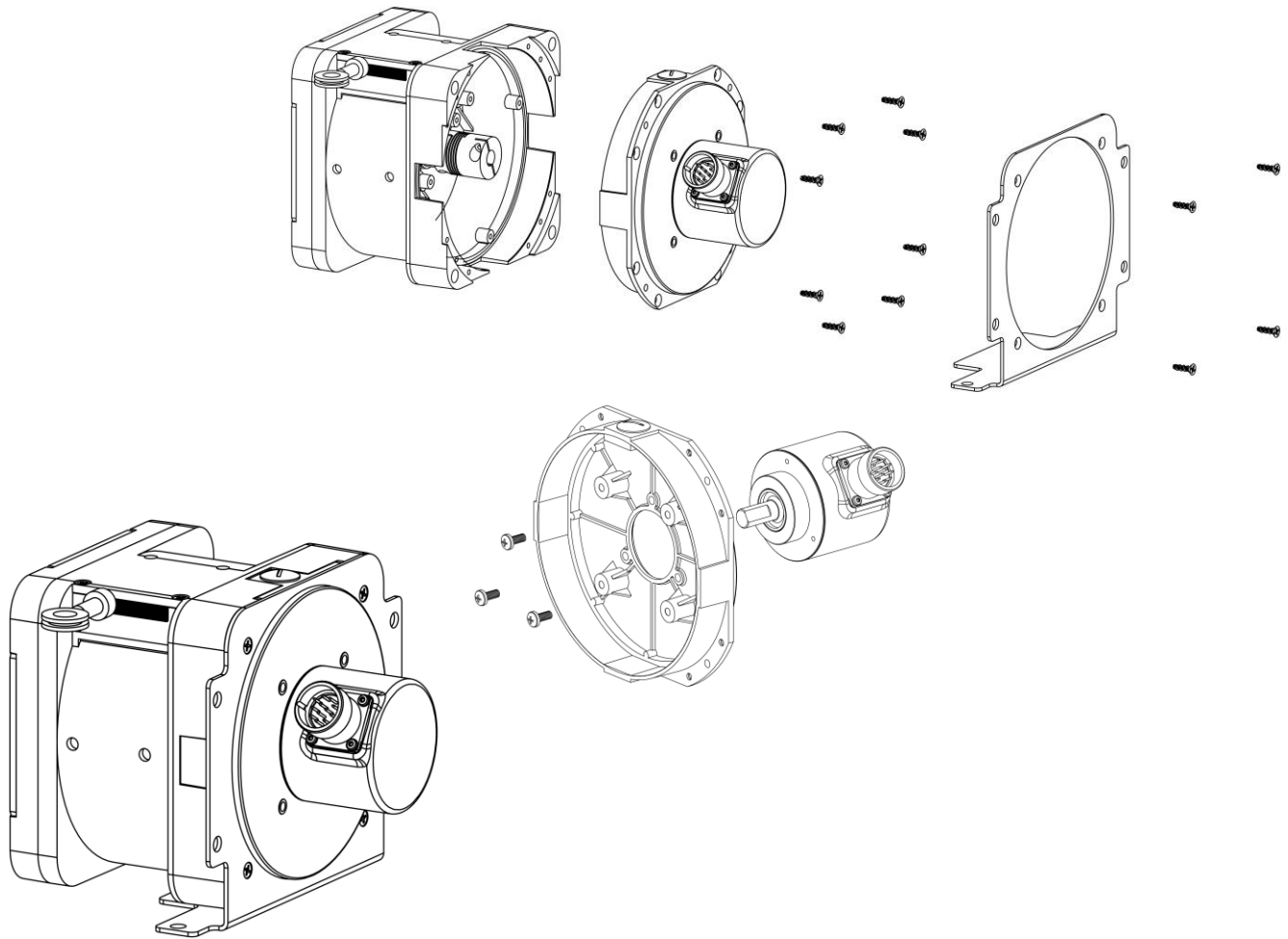
Ordering Information

Order Number	Encoder Mounting Style	stroke range
SK6-400-F01	 <p>F01 2½-inch Sq. Flange with 3/8-inch shaft</p> <p><i>all dimensions are in inches</i></p>	400 inches (10,2 m)
SK6-400-S02	 <p>S02 Synchro-Mount (Face Mount) with 10mm shaft / M4 screws</p> <p><i>all dimensions are in mm</i></p>	400 inches (10,2 m)

2.5-inch Square Flange Encoder Installation



Synchro-Mount Encoder Installation



NORTH AMERICA

Measurement Specialties, Inc.,
a TE Connectivity company
20630 Plummer Street
Chatsworth, CA 91311
Tel +1 800 423 5483
Tel +1 818 701 2750
Fax +1 818 701 2799
info@celesco.com

TE.com/sensorsolutions

Measurement Specialties, Inc., a TE Connectivity company.

Measurement Specialties, TE Connectivity, TE Connectivity (logo) and EVERY CONNECTION COUNTS are trademarks. All other logos, products and/or company names referred to herein might be trademarks of their respective owners.

The information given herein, including drawings, illustrations and schematics which are intended for illustration purposes only, is believed to be reliable. However, TE Connectivity makes no warranties as to its accuracy or completeness and disclaims any liability in connection with its use. TE Connectivity's obligations shall only be as set forth in TE Connectivity's Standard Terms and Conditions of Sale for this product and in no case will TE Connectivity be liable for any incidental, indirect or consequential damages arising out of the sale, resale, use or misuse of the product. Users of TE Connectivity products should make their own evaluation to determine the suitability of each such product for the specific application.

© 2015 TE Connectivity Ltd. family of companies All Rights Reserved.

SK6 12/01/2015

Mouser Electronics

Authorized Distributor

Click to View Pricing, Inventory, Delivery & Lifecycle Information:

[TE Connectivity:](#)

[SK6-400-S02](#) [SK6-400-F01](#)