



Worldwide Instrumentation Supplier
OEM & Custom Orders ... High Value, Low Cost, Quick Delivery





FACTORY AUTOMATION CABLES

**MUELLER**

WORLDWIDE INSTRUMENTATION SUPPLIER

MuellerElectric.com
T: 800.955.2629
T: 330.780.2525
F: 330.780.2524
sales@muellerelectric.com

In business for more than a century, Mueller Electric has become the electronic expert industry leaders have come to trust.



MUELLER ELECTRIC’S FACTORY AUTOMATION CABLE SERIES

TABLE OF CONTENTS

Introduction To Mueller Electric’s Factory Automation Cable Series4
Coding For Connectors6
Cable Jacket Insulations7

M12 CABLES

M12 Cables: 3, 4 & 5-Pin Positions, 18 & 22 AWG.....8-12
M12 Cables: Straight Mold Connectors13
M12 Cables: Right-Angle Mold Connectors14
M12 Cables: Open-Ended Cables15-16
M12 Cables: Double-Ended Cables17-18
Non UL-Listed Cables19
M12 Receptacles20

M8 CABLES

M8 Cables: 3, 4, 6 & 8-Pin Positions, 24 & 26 AWG21-24

M8 Cables: Straight Mold Connectors25
M8 Cables: Right-Angle Mold Connectors26
M8 Cables: Open-Ended Cables27-28
M8 Cables: Double-Ended Cables29-30
M8 Receptacles31

ADDITIONAL CABLES

Additional Cables32-37
7/8-16UN-M12 Cables32
End Caps & Accessories32
Ethernet Cables33
Open-Ended M12 Cables with Junction Box34
7/8-16UN Cables, Receptacles and M23 Equivalents35
M12-M8 Cables36
M12-M12 Light-Up Ethernet Cables36
M8-M8 Molded Y-Connector Cables37
Y Connectors37
Field-Installable Connectors37

OTHER INFORMATION

Custom Cable Orders38
Industries Served39
Warranty39
Notes40-43



MUELLER ELECTRIC'S FACTORY AUTOMATION CABLE SERIES

The future of **FACTORY AUTOMATION** is here

*The time to change is **NOW***

The time to change is NOW.

Factory automation cables are part of an ongoing multi-million-dollar demand in manufacturing to automate equipment in order to produce products faster and more efficiently. With the advance of Industry 4.0, smart factories are now becoming a reality.

The events of the recent pandemic have further propelled this need to implement factory automation equipment as an inventive solution in all areas of manufacturing as a means to eliminate social distancing issues, human touch and also to fulfill a number of jobs created by the demand to ship more products on time. Not only are robots used heavily in production but they are now also being used to coordinate picking and shipping orders. Robotics and automated equipment are now very much needed in all phases and departments of manufacturing.

As a result plant managers are under pressure now more than ever to convert to new manufacturing methods and are left wondering how to upgrade systems while avoiding costly investments and staying within a given budget.

So what's a simple answer to this major shift in manufacturing culture?

Mueller Electric has just the solution with factory automation cables!

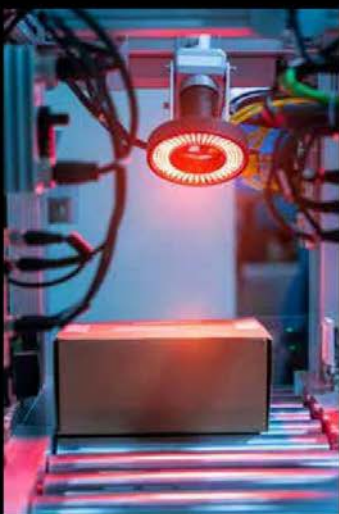
Simple yet technologically equipped, factory automation cables come ready to install with existing manufacturing equipment and can adapt with sensors, actuators, frequency converters, motor-operated switches and other components that are required as more and more smart factory practices come into play.

They're not just factory automation cables; they're technologically advanced to provide ultimate connectivity with both current equipment and progressive systems ... all at a high value and low cost designed so you can stay within a budget!

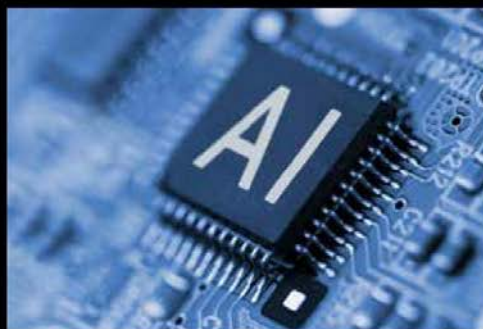




SMART FACTORIES



MACHINE VISION



INDUSTRIAL ARTIFICIAL INTELLIGENCE

INDUSTRY 4.0



CODING FOR CONNECTORS

What Coding Do You Use For The Application?

CODING FOR TODAY

With all the different types of coding available, knowing what coding to use for which application can be confusing. Below are 5 common types of coding currently used in today's work environment and their descriptions translated, followed by 4 types of coding that are emerging as up and coming coding for future use.



A CODE

A CODING (MICRO-DC OR M12)

The Micro-DC (MDC) series, perhaps known better as micro-changes or M12, is one of the most widely and currently used industrial quick disconnects in the industrial market. These connectors can be used in both AC or DC applications. Uses of M12s in industrial automation are limitless but are commonly used in factory automation for sensors, actuators, motors, switches, safety light curtains and mats and interlock switches.



B CODE

B CODING (EURO AC)

The EURO AC (MEC) series has a reversed single keyway known as B-code. This allows 2 unique M12 connectors to be mounted on the same panel without fear of incorrectly coupling connectors to equipment with varying voltage and amperages.



C CODE

C CODING (MICRO AC)

The MICRO-AC (MAC) series uses a 1/8"-20 mating thread and has a first-make, last-break extended ground pin. The use of a double keyway (C code) prevents connectors from accidentally being plugged into other connectors of similar size.



D CODE

D CODING (ETHERNET)

M12 Ethernet series (MDE45) utilizes 4 wire (D-code) connectors with 2 pair Cat 5e cables or M12 8 wire (A-code) connectors with 4 pair Cat 5e cables. The MDE45 is specifically used in industrial Ethernet applications and has real cable using twisted pairs of wires inside. D code is for 100-Mbit Ethernet.



X CODE

X CODING (ETHERNET)

X-coded instrumentation cables are becoming more popular as they are used in Ethernet 10-Gbit environments. The X-coded type connection is becoming more and more popular for high-speed industrial Ethernet and will eventually replace the A- and D-coded parts for Ethernet applications.

CODING FOR TOMORROW

L Coding

Used for power 12A / 63 V AC or DC applications.



L CODE

P Coding

Used for early mate and fast break PE contacts.



P CODE

S Coding

Used for AC power and will eventually replace C-coded power cables.



S CODE

T Coding

Used for DC power and will eventually replace A-coded power cables.



T CODE

JACKET INSULATIONS

PVC, PUR or TPE ... Which Jacket Insulation Best Fits My Purpose?

Jacket insulation plays a large part in a cable's performance for a particular application. Choosing the right jacket insulation for a cable's intended use will aid in preserving the longevity of your instrumentation cable.

Mueller Electric offers options for all types of uses for factory automation cables. Below is a description of three jacket insulation materials and a quick reference chart that shows what cable insulation type is best to use for specific applications. You can choose which jacket insulation type is best for your application needs!

PVC

Polyvinyl Chloride is a great choice for general purpose use which allows Mueller Electric to give you a great price point. Because of its high moisture resistance, PVC is great for use in wet or humid conditions.

PUR

Polyurethane offers good resistance against abrasion, oil and ozone. PUR is halogen free, meaning it does not contain chlorine, iodine, fluorine, bromine or astatine.

TPE

Thermoplastic Elastomer is flexible, recyclable and has excellent cold temperature characteristics. TPE is resistant to aging in sunlight, UV and ozone. It also has a high flex rating, typically of 10 million.

RESISTANCE TO:**TPE****PVC****PUR**

ABRASION

Excellent

Fair-Good

Excellent

ACID

Excellent

Good-Excellent

Excellent

ALCOHOL

Excellent

Good-Excellent

Excellent

ALKALI

Excellent

Good-Excellent

Excellent

ALUMINUM	EXCELLENT	GOOD-EXCELLENT	EXCELLENT
BENZOL	Excellent	Poor-Fair	Excellent
DEGREASER SOLVENTS	Excellent	Poor-Fair	Excellent
ELECTRICAL PROPERTIES	Excellent	Fair-Good	Excellent
FLAME	Outstanding	Excellent	Excellent
GASOLINE	Excellent	Poor	Excellent
HEAT	Outstanding	Good-Excellent	Excellent
LOW TEMPERATURE FLEXIBILITY	Outstanding	Poor-Good	Excellent
NUCLEAR RADIATION	Poor	Fair	Excellent
OIL	Outstanding	Fair	Outstanding
OXIDATION	Outstanding	Excellent	Excellent
OZONE	Excellent	Excellent	Excellent
WATER	Excellent	Good-Excellent	Good-Excellent
WEATHER, SUN	Outstanding	Good-Excellent	Excellent
WELD SLAG	Excellent	Fair	Excellent

Mueller Electric | 2850 Gilchrist Rd, Building 5A, Akron, OH 44305 | 800.955.2629 | www.muellerelectric.com

7



MUELLER ELECTRIC'S FACTORY AUTOMATION CABLE SERIES

M12 CABLES



8

Mueller Electric | 2850 Gilchrist Rd, Building 5A, Akron, OH 44305 | 800.955.2629 | www.muellerelectric.com



MUELLER ELECTRIC’S M12 FACTORY AUTOMATION CABLE SERIES



M12 Cables Full Listing: 3, 4 & 5-Pin Positions, 18 & 22 AWG

- PVC shielded or TPE unshielded jacket insulation
- Nickel-plated brass or anodized aluminum coupling nut material
- Standard cable lengths are 2, 5 & 10 meters
- Other cable lengths available upon request



Part Number	Cordset / Receptacle	Pin Count	Head Configuration		Plug Body	Cable Type	Cable Color	Coupling Nut Material	AWG	Cable Length (Meters)
			# 1	# 2						
C3A01M002	Cord Set	3	Male	Open End	Straight	TPE	Yellow	Anodized Aluminum	18	2M

C3A01M005	Cord Set	3	Male	Open End	Straight	TPE	Yellow	Anodized Aluminum	18	5M
C3A01M010	Cord Set	3	Male	Open End	Straight	TPE	Yellow	Anodized Aluminum	18	10M
C3B01M002	Cord Set	3	Male	Open End	Right Angle	TPE	Yellow	Anodized Aluminum	18	2M
C3B01M005	Cord Set	3	Male	Open End	Right Angle	TPE	Yellow	Anodized Aluminum	18	5M
C3B01M010	Cord Set	3	Male	Open End	Right Angle	TPE	Yellow	Anodized Aluminum	18	10M
C3C01M002	Cord Set	3	Female	Open End	Straight	TPE	Yellow	Anodized Aluminum	18	2M
C3C01M005	Cord Set	3	Female	Open End	Straight	TPE	Yellow	Anodized Aluminum	18	5M
C3C01M010	Cord Set	3	Female	Open End	Straight	TPE	Yellow	Anodized Aluminum	18	10M
C3D01M002	Cord Set	3	Female	Open End	Right Angle	TPE	Yellow	Anodized Aluminum	18	2M
C3D01M005	Cord Set	3	Female	Open End	Right Angle	TPE	Yellow	Anodized Aluminum	18	5M
C3D01M010	Cord Set	3	Female	Open End	Right Angle	TPE	Yellow	Anodized Aluminum	18	10M
C3AC01M002	Cord Set	3	Male	Female	Straight-Straight	TPE	Yellow	Anodized Aluminum	18	2M
C3AC01M005	Cord Set	3	Male	Female	Straight-Straight	TPE	Yellow	Anodized Aluminum	18	5M
C3AC01M010	Cord Set	3	Male	Female	Straight-Straight	TPE	Yellow	Anodized Aluminum	18	10M
C3AD01M002	Cord Set	3	Male	Female	Straight-Right Angle	TPE	Yellow	Anodized Aluminum	18	2M
C3AD01M005	Cord Set	3	Male	Female	Straight-Right Angle	TPE	Yellow	Anodized Aluminum	18	5M
C3AD01M010	Cord Set	3	Male	Female	Straight-Right Angle	TPE	Yellow	Anodized Aluminum	18	10M
C3BC01M002	Cord Set	3	Male	Female	Right Angle-Straight	TPE	Yellow	Anodized Aluminum	18	2M
C3BC01M005	Cord Set	3	Male	Female	Right Angle-Straight	TPE	Yellow	Anodized Aluminum	18	5M
C3BC01M010	Cord Set	3	Male	Female	Right Angle-Straight	TPE	Yellow	Anodized Aluminum	18	10M
C3BD01M002	Cord Set	3	Male	Female	Right Angle-Right Angle	TPE	Yellow	Anodized Aluminum	18	2M
C3BD01M005	Cord Set	3	Male	Female	Right Angle-Right Angle	TPE	Yellow	Anodized Aluminum	18	5M
C3BD01M010	Cord Set	3	Male	Female	Right Angle-Right Angle	TPE	Yellow	Anodized Aluminum	18	10M
C4A02M002	Cord Set	4	Male	Open End	Straight	TPE	Yellow	Anodized Aluminum	18	2M
C4A02M005	Cord Set	4	Male	Open End	Straight	TPE	Yellow	Anodized Aluminum	18	5M
C4A02M010	Cord Set	4	Male	Open End	Straight	TPE	Yellow	Anodized Aluminum	18	10M
C4B02M002	Cord Set	4	Male	Open End	Right Angle	TPE	Yellow	Anodized Aluminum	18	2M
C4B02M005	Cord Set	4	Male	Open End	Right Angle	TPE	Yellow	Anodized Aluminum	18	5M
C4B02M010	Cord Set	4	Male	Open End	Right Angle	TPE	Yellow	Anodized Aluminum	18	10M
C4C02M002	Cord Set	4	Female	Open End	Straight	TPE	Yellow	Anodized Aluminum	18	2M
C4C02M005	Cord Set	4	Female	Open End	Straight	TPE	Yellow	Anodized Aluminum	18	5M
C4C02M010	Cord Set	4	Female	Open End	Straight	TPE	Yellow	Anodized Aluminum	18	10M
C4D02M002	Cord Set	4	Female	Open End	Right Angle	TPE	Yellow	Anodized Aluminum	18	2M
C4D02M005	Cord Set	4	Female	Open End	Right Angle	TPE	Yellow	Anodized Aluminum	18	5M
C4D02M010	Cord Set	4	Female	Open End	Right Angle	TPE	Yellow	Anodized Aluminum	18	10M



M12 Cables Full Listing: 3, 4 & 5-Pin Positions, 18 & 22 AWG

- PVC shielded or TPE unshielded jacket insulation





- Nickel-plated brass or anodized aluminum coupling nut material
- Standard cable lengths are 2, 5 & 10 meters



Other cable lengths available upon request

Part Number	Cordset / Receptacle	Pin Count	Head Configuration		Plug Body	Cable Type	Cable Color	Coupling Nut Material	AWG	Cable Length (Meters)
			# 1	# 2						
C4AC02M002	Cord Set	4	Male	Female	Straight-Straight	TPE	Yellow	Anodized Aluminum	18	2M
C4AC02M005	Cord Set	4	Male	Female	Straight-Straight	TPE	Yellow	Anodized Aluminum	18	5M
C4AC02M010	Cord Set	4	Male	Female	Straight-Straight	TPE	Yellow	Anodized Aluminum	18	10M
C4AD02M002	Cord Set	4	Male	Female	Straight-Right Angle	TPE	Yellow	Anodized Aluminum	18	2M
C4AD02M005	Cord Set	4	Male	Female	Straight-Right Angle	TPE	Yellow	Anodized Aluminum	18	5M
C4AD02M010	Cord Set	4	Male	Female	Straight-Right Angle	TPE	Yellow	Anodized Aluminum	18	10M
C4BC02M002	Cord Set	4	Male	Female	Right Angle-Straight	TPE	Yellow	Anodized Aluminum	18	2M
C4BC02M005	Cord Set	4	Male	Female	Right Angle-Straight	TPE	Yellow	Anodized Aluminum	18	5M
C4BC02M010	Cord Set	4	Male	Female	Right Angle-Straight	TPE	Yellow	Anodized Aluminum	18	10M
C4BD02M002	Cord Set	4	Male	Female	Right Angle-Right Angle	TPE	Yellow	Anodized Aluminum	18	2M
C4BD02M005	Cord Set	4	Male	Female	Right Angle-Right Angle	TPE	Yellow	Anodized Aluminum	18	5M
C4BD02M010	Cord Set	4	Male	Female	Right Angle-Right Angle	TPE	Yellow	Anodized Aluminum	18	10M
C5A03M002	Cord Set	5	Male	Open End	Straight	TPE	Yellow	Anodized Aluminum	18	2M
C5A03M005	Cord Set	5	Male	Open End	Straight	TPE	Yellow	Anodized Aluminum	18	5M
C5A03M010	Cord Set	5	Male	Open End	Straight	TPE	Yellow	Anodized Aluminum	18	10M
C5B03M002	Cord Set	5	Male	Open End	Right Angle	TPE	Yellow	Anodized Aluminum	18	2M
C5B03M005	Cord Set	5	Male	Open End	Right Angle	TPE	Yellow	Anodized Aluminum	18	5M
C5B03M010	Cord Set	5	Male	Open End	Right Angle	TPE	Yellow	Anodized Aluminum	18	10M
C5C03M002	Cord Set	5	Female	Open End	Straight	TPE	Yellow	Anodized Aluminum	18	2M
C5C03M005	Cord Set	5	Female	Open End	Straight	TPE	Yellow	Anodized Aluminum	18	5M
C5C03M010	Cord Set	5	Female	Open End	Straight	TPE	Yellow	Anodized Aluminum	18	10M
C5D03M002	Cord Set	5	Female	Open End	Right Angle	TPE	Yellow	Anodized Aluminum	18	2M
C5D03M005	Cord Set	5	Female	Open End	Right Angle	TPE	Yellow	Anodized Aluminum	18	5M
C5D03M010	Cord Set	5	Female	Open End	Right Angle	TPE	Yellow	Anodized Aluminum	18	10M
C5AC03M002	Cord Set	5	Male	Female	Straight-Straight	TPE	Yellow	Anodized Aluminum	18	2M
C5AC03M005	Cord Set	5	Male	Female	Straight-Straight	TPE	Yellow	Anodized Aluminum	18	5M
C5AC03M010	Cord Set	5	Male	Female	Straight-Straight	TPE	Yellow	Anodized Aluminum	18	10M
C5AD03M002	Cord Set	5	Male	Female	Straight-Right Angle	TPE	Yellow	Anodized Aluminum	18	2M
C5AD03M005	Cord Set	5	Male	Female	Straight-Right Angle	TPE	Yellow	Anodized Aluminum	18	5M
C5AD03M010	Cord Set	5	Male	Female	Straight-Right Angle	TPE	Yellow	Anodized Aluminum	18	10M
C5BC03M002	Cord Set	5	Male	Female	Right Angle-Straight	TPE	Yellow	Anodized Aluminum	18	2M
C5BC03M005	Cord Set	5	Male	Female	Right Angle-Straight	TPE	Yellow	Anodized Aluminum	18	5M
C5BC03M010	Cord Set	5	Male	Female	Right Angle-Straight	TPE	Yellow	Anodized Aluminum	18	10M
C5BD03M002	Cord Set	5	Male	Female	Right Angle-Right Angle	TPE	Yellow	Anodized Aluminum	18	2M
C5BD03M005	Cord Set	5	Male	Female	Right Angle-Right Angle	TPE	Yellow	Anodized Aluminum	18	5M
C5BD03M010	Cord Set	5	Male	Female	Right Angle-Right Angle	TPE	Yellow	Anodized Aluminum	18	10M



M12 Cables Full Listing: 3, 4 & 5-Pin Positions, 18 & 22 AWG

- PVC shielded or TPE unshielded jacket insulation
- Nickel-plated brass or anodized aluminum coupling nut material
- Standard cable lengths are 2, 5 & 10 meters

Other cable lengths available upon request



Part Number	Cordset / Receptacle	Pin Count	Head Configuration		Plug Body	Cable Type	Cable Color	Coupling Nut Material	AWG	Cable Length (Meters)
			# 1	# 2						
C3A04M002	Cord Set	3	Male	Open End	Straight	PVC	Yellow	Nickel-Plated Brass	22	2M
C3A04M005	Cord Set	3	Male	Open End	Straight	PVC	Yellow	Nickel-Plated Brass	22	5M
C3A04M010	Cord Set	3	Male	Open End	Straight	PVC	Yellow	Nickel-Plated Brass	22	10M
C3B04M002	Cord Set	3	Male	Open End	Right Angle	PVC	Yellow	Nickel-Plated Brass	22	2M
C3B04M005	Cord Set	3	Male	Open End	Right Angle	PVC	Yellow	Nickel-Plated Brass	22	5M
C3B04M010	Cord Set	3	Male	Open End	Right Angle	PVC	Yellow	Nickel-Plated Brass	22	10M
C3C04M002	Cord Set	3	Female	Open End	Straight	PVC	Yellow	Nickel-Plated Brass	22	2M
C3C04M005	Cord Set	3	Female	Open End	Straight	PVC	Yellow	Nickel-Plated Brass	22	5M
C3C04M010	Cord Set	3	Female	Open End	Straight	PVC	Yellow	Nickel-Plated Brass	22	10M
C3D04M002	Cord Set	3	Female	Open End	Right Angle	PVC	Yellow	Nickel-Plated Brass	22	2M
C3D04M005	Cord Set	3	Female	Open End	Right Angle	PVC	Yellow	Nickel-Plated Brass	22	5M
C3D04M010	Cord Set	3	Female	Open End	Right Angle	PVC	Yellow	Nickel-Plated Brass	22	10M
C3AC04M002	Cord Set	3	Male	Female	Straight-Straight	PVC	Yellow	Nickel-Plated Brass	22	2M
C3AC04M005	Cord Set	3	Male	Female	Straight-Straight	PVC	Yellow	Nickel-Plated Brass	22	5M
C3AC04M010	Cord Set	3	Male	Female	Straight-Straight	PVC	Yellow	Nickel-Plated Brass	22	10M
C3AD04M002	Cord Set	3	Male	Female	Straight-Right Angle	PVC	Yellow	Nickel-Plated Brass	22	2M
C3AD04M005	Cord Set	3	Male	Female	Straight-Right Angle	PVC	Yellow	Nickel-Plated Brass	22	5M
C3AD04M010	Cord Set	3	Male	Female	Straight-Right Angle	PVC	Yellow	Nickel-Plated Brass	22	10M
C3BC04M002	Cord Set	3	Male	Female	Right Angle-Straight	PVC	Yellow	Nickel-Plated Brass	22	2M
C3BC04M005	Cord Set	3	Male	Female	Right Angle-Straight	PVC	Yellow	Nickel-Plated Brass	22	5M
C3BC04M010	Cord Set	3	Male	Female	Right Angle-Straight	PVC	Yellow	Nickel-Plated Brass	22	10M
C3BD04M002	Cord Set	3	Male	Female	Right Angle-Right Angle	PVC	Yellow	Nickel-Plated Brass	22	2M
C3BD04M005	Cord Set	3	Male	Female	Right Angle-Right Angle	PVC	Yellow	Nickel-Plated Brass	22	5M
C3BD04M010	Cord Set	3	Male	Female	Right Angle-Right Angle	PVC	Yellow	Nickel-Plated Brass	22	10M
C4A05M002	Cord Set	4	Male	Open End	Straight	PVC	Yellow	Nickel-Plated Brass	22	2M
C4A05M005	Cord Set	4	Male	Open End	Straight	PVC	Yellow	Nickel-Plated Brass	22	5M
C4A05M010	Cord Set	4	Male	Open End	Straight	PVC	Yellow	Nickel-Plated Brass	22	10M
C4B05M002	Cord Set	4	Male	Open End	Right Angle	PVC	Yellow	Nickel-Plated Brass	22	2M
C4B05M005	Cord Set	4	Male	Open End	Right Angle	PVC	Yellow	Nickel-Plated Brass	22	5M
C4B05M010	Cord Set	4	Male	Open End	Right Angle	PVC	Yellow	Nickel-Plated Brass	22	10M

C4B05M010	Cord Set	4	Male	Open End	Right Angle	PVC	Yellow	Nickel-Plated Brass	22	10M
C4C05M002	Cord Set	4	Female	Open End	Straight	PVC	Yellow	Nickel-Plated Brass	22	2M
C4C05M005	Cord Set	4	Female	Open End	Straight	PVC	Yellow	Nickel-Plated Brass	22	5M
C4C05M010	Cord Set	4	Female	Open End	Straight	PVC	Yellow	Nickel-Plated Brass	22	10M
C4D05M002	Cord Set	4	Female	Open End	Right Angle	PVC	Yellow	Nickel-Plated Brass	22	2M
C4D05M005	Cord Set	4	Female	Open End	Right Angle	PVC	Yellow	Nickel-Plated Brass	22	5M
C4D05M010	Cord Set	4	Female	Open End	Right Angle	PVC	Yellow	Nickel-Plated Brass	22	10M

Mueller Electric | 2850 Gilchrist Rd, Building 5A, Akron, OH 44305 | 800.955.2629 | www.muellerelectric.com

11


**M12 Cables Full Listing: 3, 4 & 5-Pin Positions, 18 & 22 AWG**

- PVC shielded or TPE unshielded jacket insulation
- Nickel-plated brass or anodized aluminum coupling nut material
- Standard cable lengths are 2, 5 & 10 meters

Other cable lengths available upon request

Part Number	Cordset / Receptacle	Pin Count	Head Configuration		Plug Body	Cable Type	Cable Color	Coupling Nut Material	AWG	Cable Length (Meters)
			# 1	# 2						
C4AC05M002	Cord Set	4	Male	Female	Straight-Straight	PVC	Yellow	Nickel-Plated Brass	22	2M
C4AC05M005	Cord Set	4	Male	Female	Straight-Straight	PVC	Yellow	Nickel-Plated Brass	22	5M
C4AC05M010	Cord Set	4	Male	Female	Straight-Straight	PVC	Yellow	Nickel-Plated Brass	22	10M
C4AD05M002	Cord Set	4	Male	Female	Straight-Right Angle	PVC	Yellow	Nickel-Plated Brass	22	2M
C4AD05M005	Cord Set	4	Male	Female	Straight-Right Angle	PVC	Yellow	Nickel-Plated Brass	22	5M
C4AD05M010	Cord Set	4	Male	Female	Straight-Right Angle	PVC	Yellow	Nickel-Plated Brass	22	10M
C4BC05M002	Cord Set	4	Male	Female	Right Angle-Straight	PVC	Yellow	Nickel-Plated Brass	22	2M
C4BC05M005	Cord Set	4	Male	Female	Right Angle-Straight	PVC	Yellow	Nickel-Plated Brass	22	5M
C4BC05M010	Cord Set	4	Male	Female	Right Angle-Straight	PVC	Yellow	Nickel-Plated Brass	22	10M
C4BD05M002	Cord Set	4	Male	Female	Right Angle-Right Angle	PVC	Yellow	Nickel-Plated Brass	22	2M
C4BD05M005	Cord Set	4	Male	Female	Right Angle-Right Angle	PVC	Yellow	Nickel-Plated Brass	22	5M
C4BD05M010	Cord Set	4	Male	Female	Right Angle-Right Angle	PVC	Yellow	Nickel-Plated Brass	22	10M
C5A06M002	Cord Set	5	Male	Open End	Straight	PVC	Yellow	Nickel-Plated Brass	22	2M
C5A06M005	Cord Set	5	Male	Open End	Straight	PVC	Yellow	Nickel-Plated Brass	22	5M
C5A06M010	Cord Set	5	Male	Open End	Straight	PVC	Yellow	Nickel-Plated Brass	22	10M
C5B06M002	Cord Set	5	Male	Open End	Right Angle	PVC	Yellow	Nickel-Plated Brass	22	2M
C5B06M005	Cord Set	5	Male	Open End	Right Angle	PVC	Yellow	Nickel-Plated Brass	22	5M
C5B06M010	Cord Set	5	Male	Open End	Right Angle	PVC	Yellow	Nickel-Plated Brass	22	10M
C5C06M002	Cord Set	5	Female	Open End	Straight	PVC	Yellow	Nickel-Plated Brass	22	2M

C5C06M005	Cord Set	5	Female	Open End	Straight	PVC	Yellow	Nickel-Plated Brass	22	5M
C5C06M010	Cord Set	5	Female	Open End	Straight	PVC	Yellow	Nickel-Plated Brass	22	10M
C5D06M002	Cord Set	5	Female	Open End	Right Angle	PVC	Yellow	Nickel-Plated Brass	22	2M
C5D06M005	Cord Set	5	Female	Open End	Right Angle	PVC	Yellow	Nickel-Plated Brass	22	5M
C5D06M010	Cord Set	5	Female	Open End	Right Angle	PVC	Yellow	Nickel-Plated Brass	22	10M
C5AC06M002	Cord Set	5	Male	Female	Straight-Straight	PVC	Yellow	Nickel-Plated Brass	22	2M
C5AC06M005	Cord Set	5	Male	Female	Straight-Straight	PVC	Yellow	Nickel-Plated Brass	22	5M
C5AC06M010	Cord Set	5	Male	Female	Straight-Straight	PVC	Yellow	Nickel-Plated Brass	22	10M
C5AD06M002	Cord Set	5	Male	Female	Straight-Right Angle	PVC	Yellow	Nickel-Plated Brass	22	2M
C5AD06M005	Cord Set	5	Male	Female	Straight-Right Angle	PVC	Yellow	Nickel-Plated Brass	22	5M
C5AD06M010	Cord Set	5	Male	Female	Straight-Right Angle	PVC	Yellow	Nickel-Plated Brass	22	10M
C5BC06M002	Cord Set	5	Male	Female	Right Angle-Straight	PVC	Yellow	Nickel-Plated Brass	22	2M
C5BC06M005	Cord Set	5	Male	Female	Right Angle-Straight	PVC	Yellow	Nickel-Plated Brass	22	5M
C5BC06M010	Cord Set	5	Male	Female	Right Angle-Straight	PVC	Yellow	Nickel-Plated Brass	22	10M
C5BD06M002	Cord Set	5	Male	Female	Right Angle-Right Angle	PVC	Yellow	Nickel-Plated Brass	22	2M
C5BD06M005	Cord Set	5	Male	Female	Right Angle-Right Angle	PVC	Yellow	Nickel-Plated Brass	22	5M
C5BD06M010	Cord Set	5	Male	Female	Right Angle-Right Angle	PVC	Yellow	Nickel-Plated Brass	22	2M

12 Mueller Electric | 2850 Gilchrist Rd, Building 5A, Akron, OH 44305 | 800.955.2629 | www.muellerelectric.com



M12 Cables: Straight Mold Types

- PVC shielded or TPE unshielded jacket insulation
- Nickel-plated brass or anodized aluminum coupling nut material
- Standard cable lengths are 2, 5 & 10 meters

Other cable lengths available upon request



Part Number	Cordset / Receptacle	Pin Count	Head Configuration		Plug Body	Cable Type	Cable Color	Coupling Nut Material	AWG	Cable Length (Meters)
			# 1	# 2						
C3A01M002	Cord Set	3	Male	Open End	Straight	TPE	Yellow	Anodized Aluminum	18	2M
C3A01M005	Cord Set	3	Male	Open End	Straight	TPE	Yellow	Anodized Aluminum	18	5M
C3A01M010	Cord Set	3	Male	Open End	Straight	TPE	Yellow	Anodized Aluminum	18	10M
C3C01M002	Cord Set	3	Female	Open End	Straight	TPE	Yellow	Anodized Aluminum	18	2M
C3C01M005	Cord Set	3	Female	Open End	Straight	TPE	Yellow	Anodized Aluminum	18	5M
C3C01M010	Cord Set	3	Female	Open End	Straight	TPE	Yellow	Anodized Aluminum	18	10M
C4A02M002	Cord Set	4	Male	Open End	Straight	TPE	Yellow	Anodized Aluminum	18	2M
C4A02M005	Cord Set	4	Male	Open End	Straight	TPE	Yellow	Anodized Aluminum	18	5M
C4A02M010	Cord Set	4	Male	Open End	Straight	TPE	Yellow	Anodized Aluminum	18	10M
C4C02M002	Cord Set	4	Female	Open End	Straight	TPE	Yellow	Anodized Aluminum	18	2M

C4C02M005	Cord Set	4	Female	Open End	Straight	TPE	Yellow	Anodized Aluminum	18	5M
C4C02M010	Cord Set	4	Female	Open End	Straight	TPE	Yellow	Anodized Aluminum	18	10M
C5A03M002	Cord Set	5	Male	Open End	Straight	TPE	Yellow	Anodized Aluminum	18	2M
C5A03M005	Cord Set	5	Male	Open End	Straight	TPE	Yellow	Anodized Aluminum	18	5M
C5A03M010	Cord Set	5	Male	Open End	Straight	TPE	Yellow	Anodized Aluminum	18	10M
C5C03M002	Cord Set	5	Female	Open End	Straight	TPE	Yellow	Anodized Aluminum	18	2M
C5C03M005	Cord Set	5	Female	Open End	Straight	TPE	Yellow	Anodized Aluminum	18	5M
C5C03M010	Cord Set	5	Female	Open End	Straight	TPE	Yellow	Anodized Aluminum	18	10M
C3A04M002	Cord Set	3	Male	Open End	Straight	PVC	Yellow	Nickel-Plated Brass	22	2M
C3A04M005	Cord Set	3	Male	Open End	Straight	PVC	Yellow	Nickel-Plated Brass	22	5M
C3A04M010	Cord Set	3	Male	Open End	Straight	PVC	Yellow	Nickel-Plated Brass	22	10M
C3C04M002	Cord Set	3	Female	Open End	Straight	PVC	Yellow	Nickel-Plated Brass	22	2M
C3C04M005	Cord Set	3	Female	Open End	Straight	PVC	Yellow	Nickel-Plated Brass	22	5M
C3C04M010	Cord Set	3	Female	Open End	Straight	PVC	Yellow	Nickel-Plated Brass	22	10M
C4A05M002	Cord Set	4	Male	Open End	Straight	PVC	Yellow	Nickel-Plated Brass	22	2M
C4A05M005	Cord Set	4	Male	Open End	Straight	PVC	Yellow	Nickel-Plated Brass	22	5M
C4A05M010	Cord Set	4	Male	Open End	Straight	PVC	Yellow	Nickel-Plated Brass	22	10M
C4C05M002	Cord Set	4	Female	Open End	Straight	PVC	Yellow	Nickel-Plated Brass	22	2M
C4C05M005	Cord Set	4	Female	Open End	Straight	PVC	Yellow	Nickel-Plated Brass	22	5M
C4C05M010	Cord Set	4	Female	Open End	Straight	PVC	Yellow	Nickel-Plated Brass	22	10M
C5A06M002	Cord Set	5	Male	Open End	Straight	PVC	Yellow	Nickel-Plated Brass	22	2M
C5A06M005	Cord Set	5	Male	Open End	Straight	PVC	Yellow	Nickel-Plated Brass	22	5M
C5A06M010	Cord Set	5	Male	Open End	Straight	PVC	Yellow	Nickel-Plated Brass	22	10M
C5C06M002	Cord Set	5	Female	Open End	Straight	PVC	Yellow	Nickel-Plated Brass	22	2M
C5C06M005	Cord Set	5	Female	Open End	Straight	PVC	Yellow	Nickel-Plated Brass	22	5M
C5C06M010	Cord Set	5	Female	Open End	Straight	PVC	Yellow	Nickel-Plated Brass	22	10M

Mueller Electric | 2850 Gilchrist Rd, Building 5A, Akron, OH 44305 | 800.955.2629 | www.muellerelectric.com

13


**M12 Cables: Right-Angle Mold Types**

- PVC shielded or TPE unshielded jacket insulation
- Nickel-plated brass or anodized aluminum coupling nut material
- Standard cable lengths are 2, 5 & 10 meters

Other cable lengths available upon request

Part Number	Cordset / Receptacle	Pin Count	Head Configuration		Plug Body	Cable Type	Cable Color	Coupling Nut Material	AWG	Cable Length (Meters)
			# 1	# 2						
C3B01M002	Cord Set	3	Male	Open End	Right Angle	TPE	Yellow	Anodized Aluminum	18	2M

C3B01M005	Cord Set	3	Male	Open End	Right Angle	TPE	Yellow	Anodized Aluminum	18	5M
C3B01M010	Cord Set	3	Male	Open End	Right Angle	TPE	Yellow	Anodized Aluminum	18	10M
C3D01M002	Cord Set	3	Female	Open End	Right Angle	TPE	Yellow	Anodized Aluminum	18	2M
C3D01M005	Cord Set	3	Female	Open End	Right Angle	TPE	Yellow	Anodized Aluminum	18	5M
C3D01M010	Cord Set	3	Female	Open End	Right Angle	TPE	Yellow	Anodized Aluminum	18	10M
C4B02M002	Cord Set	4	Male	Open End	Right Angle	TPE	Yellow	Anodized Aluminum	18	2M
C4B02M005	Cord Set	4	Male	Open End	Right Angle	TPE	Yellow	Anodized Aluminum	18	5M
C4B02M010	Cord Set	4	Male	Open End	Right Angle	TPE	Yellow	Anodized Aluminum	18	10M
C4D02M002	Cord Set	4	Female	Open End	Right Angle	TPE	Yellow	Anodized Aluminum	18	2M
C4D02M005	Cord Set	4	Female	Open End	Right Angle	TPE	Yellow	Anodized Aluminum	18	5M
C4D02M010	Cord Set	4	Female	Open End	Right Angle	TPE	Yellow	Anodized Aluminum	18	10M
C5B03M002	Cord Set	5	Male	Open End	Right Angle	TPE	Yellow	Anodized Aluminum	18	2M
C5B03M005	Cord Set	5	Male	Open End	Right Angle	TPE	Yellow	Anodized Aluminum	18	5M
C5B03M010	Cord Set	5	Male	Open End	Right Angle	TPE	Yellow	Anodized Aluminum	18	10M
C5D03M002	Cord Set	5	Female	Open End	Right Angle	TPE	Yellow	Anodized Aluminum	18	2M
C5D03M005	Cord Set	5	Female	Open End	Right Angle	TPE	Yellow	Anodized Aluminum	18	5M
C5D03M010	Cord Set	5	Female	Open End	Right Angle	TPE	Yellow	Anodized Aluminum	18	10M
C3B04M002	Cord Set	3	Male	Open End	Right Angle	PVC	Yellow	Nickel-Plated Brass	22	2M
C3B04M005	Cord Set	3	Male	Open End	Right Angle	PVC	Yellow	Nickel-Plated Brass	22	5M
C3B04M010	Cord Set	3	Male	Open End	Right Angle	PVC	Yellow	Nickel-Plated Brass	22	10M
C3D04M002	Cord Set	3	Female	Open End	Right Angle	PVC	Yellow	Nickel-Plated Brass	22	2M
C3D04M005	Cord Set	3	Female	Open End	Right Angle	PVC	Yellow	Nickel-Plated Brass	22	5M
C3D04M010	Cord Set	3	Female	Open End	Right Angle	PVC	Yellow	Nickel-Plated Brass	22	10M
C4B05M002	Cord Set	4	Male	Open End	Right Angle	PVC	Yellow	Nickel-Plated Brass	22	2M
C4B05M005	Cord Set	4	Male	Open End	Right Angle	PVC	Yellow	Nickel-Plated Brass	22	5M
C4B05M010	Cord Set	4	Male	Open End	Right Angle	PVC	Yellow	Nickel-Plated Brass	22	10M
C4D05M002	Cord Set	4	Female	Open End	Right Angle	PVC	Yellow	Nickel-Plated Brass	22	2M
C4D05M005	Cord Set	4	Female	Open End	Right Angle	PVC	Yellow	Nickel-Plated Brass	22	5M
C4D05M010	Cord Set	4	Female	Open End	Right Angle	PVC	Yellow	Nickel-Plated Brass	22	10M
C5B06M002	Cord Set	5	Male	Open End	Right Angle	PVC	Yellow	Nickel-Plated Brass	22	2M
C5B06M005	Cord Set	5	Male	Open End	Right Angle	PVC	Yellow	Nickel-Plated Brass	22	5M
C5B06M010	Cord Set	5	Male	Open End	Right Angle	PVC	Yellow	Nickel-Plated Brass	22	10M
C5D06M002	Cord Set	5	Female	Open End	Right Angle	PVC	Yellow	Nickel-Plated Brass	22	2M
C5D06M005	Cord Set	5	Female	Open End	Right Angle	PVC	Yellow	Nickel-Plated Brass	22	5M
C5D06M010	Cord Set	5	Female	Open End	Right Angle	PVC	Yellow	Nickel-Plated Brass	22	10M



M12 Cables: Open-Ended Cables

- PVC shielded or TPE unshielded jacket insulation





- Nickel-plated brass or anodized aluminum coupling nut material
- Standard cable lengths are 2, 5 & 10 meters



Other cable lengths available upon request

Part Number	Cordset / Receptacle	Pin Count	Head Configuration		Plug Body	Cable Type	Cable Color	Coupling Nut Material	AWG	Cable Length (Meters)
			# 1	# 2						
C3A01M002	Cord Set	3	Male	Open End	Straight	TPE	Yellow	Anodized Aluminum	18	2M
C3A01M005	Cord Set	3	Male	Open End	Straight	TPE	Yellow	Anodized Aluminum	18	5M
C3A01M010	Cord Set	3	Male	Open End	Straight	TPE	Yellow	Anodized Aluminum	18	10M
C3B01M002	Cord Set	3	Male	Open End	Right Angle	TPE	Yellow	Anodized Aluminum	18	2M
C3B01M005	Cord Set	3	Male	Open End	Right Angle	TPE	Yellow	Anodized Aluminum	18	5M
C3B01M010	Cord Set	3	Male	Open End	Right Angle	TPE	Yellow	Anodized Aluminum	18	10M
C3C01M002	Cord Set	3	Female	Open End	Straight	TPE	Yellow	Anodized Aluminum	18	2M
C3C01M005	Cord Set	3	Female	Open End	Straight	TPE	Yellow	Anodized Aluminum	18	5M
C3C01M010	Cord Set	3	Female	Open End	Straight	TPE	Yellow	Anodized Aluminum	18	10M
C3D01M002	Cord Set	3	Female	Open End	Right Angle	TPE	Yellow	Anodized Aluminum	18	2M
C3D01M005	Cord Set	3	Female	Open End	Right Angle	TPE	Yellow	Anodized Aluminum	18	5M
C3D01M010	Cord Set	3	Female	Open End	Right Angle	TPE	Yellow	Anodized Aluminum	18	10M
C4A02M002	Cord Set	4	Male	Open End	Straight	TPE	Yellow	Anodized Aluminum	18	2M
C4A02M005	Cord Set	4	Male	Open End	Straight	TPE	Yellow	Anodized Aluminum	18	5M
C4A02M010	Cord Set	4	Male	Open End	Straight	TPE	Yellow	Anodized Aluminum	18	10M
C4B02M002	Cord Set	4	Male	Open End	Right Angle	TPE	Yellow	Anodized Aluminum	18	2M
C4B02M005	Cord Set	4	Male	Open End	Right Angle	TPE	Yellow	Anodized Aluminum	18	5M
C4B02M010	Cord Set	4	Male	Open End	Right Angle	TPE	Yellow	Anodized Aluminum	18	10M
C4C02M002	Cord Set	4	Female	Open End	Straight	TPE	Yellow	Anodized Aluminum	18	2M
C4C02M005	Cord Set	4	Female	Open End	Straight	TPE	Yellow	Anodized Aluminum	18	5M
C4C02M010	Cord Set	4	Female	Open End	Straight	TPE	Yellow	Anodized Aluminum	18	10M
C4D02M002	Cord Set	4	Female	Open End	Right Angle	TPE	Yellow	Anodized Aluminum	18	2M
C4D02M005	Cord Set	4	Female	Open End	Right Angle	TPE	Yellow	Anodized Aluminum	18	5M
C4D02M010	Cord Set	4	Female	Open End	Right Angle	TPE	Yellow	Anodized Aluminum	18	10M
C5A03M002	Cord Set	5	Male	Open End	Straight	TPE	Yellow	Anodized Aluminum	18	2M
C5A03M005	Cord Set	5	Male	Open End	Straight	TPE	Yellow	Anodized Aluminum	18	5M
C5A03M010	Cord Set	5	Male	Open End	Straight	TPE	Yellow	Anodized Aluminum	18	10M
C5B03M002	Cord Set	5	Male	Open End	Right Angle	TPE	Yellow	Anodized Aluminum	18	2M
C5B03M005	Cord Set	5	Male	Open End	Right Angle	TPE	Yellow	Anodized Aluminum	18	5M
C5B03M010	Cord Set	5	Male	Open End	Right Angle	TPE	Yellow	Anodized Aluminum	18	10M
C5C03M002	Cord Set	5	Female	Open End	Straight	TPE	Yellow	Anodized Aluminum	18	2M
C5C03M005	Cord Set	5	Female	Open End	Straight	TPE	Yellow	Anodized Aluminum	18	5M
C5C03M010	Cord Set	5	Female	Open End	Straight	TPE	Yellow	Anodized Aluminum	18	10M
C5D03M002	Cord Set	5	Female	Open End	Right Angle	TPE	Yellow	Anodized Aluminum	18	2M
C5D03M005	Cord Set	5	Female	Open End	Right Angle	TPE	Yellow	Anodized Aluminum	18	5M
C5D03M010	Cord Set	5	Female	Open End	Right Angle	TPE	Yellow	Anodized Aluminum	18	10M



M12 Cables: Open-Ended Cables

- PVC shielded or TPE unshielded jacket insulation
- Nickel-plated brass or anodized aluminum coupling nut material
- Standard cable lengths are 2, 5 & 10 meters

Other cable lengths available upon request



Part Number	Cordset / Receptacle	Pin Count	Head Configuration		Plug Body	Cable Type	Cable Color	Coupling Nut Material	AWG	Cable Length (Meters)
			# 1	# 2						
C3A04M002	Cord Set	3	Male	Open End	Straight	PVC	Yellow	Nickel-Plated Brass	22	2M
C3A04M005	Cord Set	3	Male	Open End	Straight	PVC	Yellow	Nickel-Plated Brass	22	5M
C3A04M010	Cord Set	3	Male	Open End	Straight	PVC	Yellow	Nickel-Plated Brass	22	10M
C3B04M002	Cord Set	3	Male	Open End	Right Angle	PVC	Yellow	Nickel-Plated Brass	22	2M
C3B04M005	Cord Set	3	Male	Open End	Right Angle	PVC	Yellow	Nickel-Plated Brass	22	5M
C3B04M010	Cord Set	3	Male	Open End	Right Angle	PVC	Yellow	Nickel-Plated Brass	22	10M
C3C04M002	Cord Set	3	Female	Open End	Straight	PVC	Yellow	Nickel-Plated Brass	22	2M
C3C04M005	Cord Set	3	Female	Open End	Straight	PVC	Yellow	Nickel-Plated Brass	22	5M
C3C04M010	Cord Set	3	Female	Open End	Straight	PVC	Yellow	Nickel-Plated Brass	22	10M
C3D04M002	Cord Set	3	Female	Open End	Right Angle	PVC	Yellow	Nickel-Plated Brass	22	2M
C3D04M005	Cord Set	3	Female	Open End	Right Angle	PVC	Yellow	Nickel-Plated Brass	22	5M
C3D04M010	Cord Set	3	Female	Open End	Right Angle	PVC	Yellow	Nickel-Plated Brass	22	10M
C4A05M002	Cord Set	4	Male	Open End	Straight	PVC	Yellow	Nickel-Plated Brass	22	2M
C4A05M005	Cord Set	4	Male	Open End	Straight	PVC	Yellow	Nickel-Plated Brass	22	5M
C4A05M010	Cord Set	4	Male	Open End	Straight	PVC	Yellow	Nickel-Plated Brass	22	10M
C4B05M002	Cord Set	4	Male	Open End	Right Angle	PVC	Yellow	Nickel-Plated Brass	22	2M
C4B05M005	Cord Set	4	Male	Open End	Right Angle	PVC	Yellow	Nickel-Plated Brass	22	5M
C4B05M010	Cord Set	4	Male	Open End	Right Angle	PVC	Yellow	Nickel-Plated Brass	22	10M
C4C05M002	Cord Set	4	Female	Open End	Straight	PVC	Yellow	Nickel-Plated Brass	22	2M
C4C05M005	Cord Set	4	Female	Open End	Straight	PVC	Yellow	Nickel-Plated Brass	22	5M
C4C05M010	Cord Set	4	Female	Open End	Straight	PVC	Yellow	Nickel-Plated Brass	22	10M
C4D05M002	Cord Set	4	Female	Open End	Right Angle	PVC	Yellow	Nickel-Plated Brass	22	2M
C4D05M005	Cord Set	4	Female	Open End	Right Angle	PVC	Yellow	Nickel-Plated Brass	22	5M
C4D05M010	Cord Set	4	Female	Open End	Right Angle	PVC	Yellow	Nickel-Plated Brass	22	10M
C5A06M002	Cord Set	5	Male	Open End	Straight	PVC	Yellow	Nickel-Plated Brass	22	2M
C5A06M005	Cord Set	5	Male	Open End	Straight	PVC	Yellow	Nickel-Plated Brass	22	5M
C5A06M010	Cord Set	5	Male	Open End	Straight	PVC	Yellow	Nickel-Plated Brass	22	10M
C5B06M002	Cord Set	5	Male	Open End	Right Angle	PVC	Yellow	Nickel-Plated Brass	22	2M

C5B06M005	Cord Set	5	Male	Open End	Right Angle	PVC	Yellow	Nickel-Plated Brass	22	5M
C5B06M010	Cord Set	5	Male	Open End	Right Angle	PVC	Yellow	Nickel-Plated Brass	22	10M
C5C06M002	Cord Set	5	Female	Open End	Straight	PVC	Yellow	Nickel-Plated Brass	22	2M
C5C06M005	Cord Set	5	Female	Open End	Straight	PVC	Yellow	Nickel-Plated Brass	22	5M
C5C06M010	Cord Set	5	Female	Open End	Straight	PVC	Yellow	Nickel-Plated Brass	22	10M
C5D06M002	Cord Set	5	Female	Open End	Right Angle	PVC	Yellow	Nickel-Plated Brass	22	2M
C5D06M005	Cord Set	5	Female	Open End	Right Angle	PVC	Yellow	Nickel-Plated Brass	22	5M
C5D06M010	Cord Set	5	Female	Open End	Right Angle	PVC	Yellow	Nickel-Plated Brass	22	10M



M12 Cables: Double-Ended Cables

- PVC shielded or TPE unshielded jacket insulation
- Nickel-plated brass or anodized aluminum coupling nut material
- Standard cable lengths are 2, 5 & 10 meters

Other cable lengths available upon request



Part Number	Cordset / Receptacle	Pin Count	Head Configuration		Plug Body	Cable Type	Cable Color	Coupling Nut Material	AWG	Cable Length (Meters)
			# 1	# 2						
C3AC01M002	Cord Set	3	Male	Female	Straight-Straight	TPE	Yellow	Anodized Aluminum	18	2M
C3AC01M005	Cord Set	3	Male	Female	Straight-Straight	TPE	Yellow	Anodized Aluminum	18	5M
C3AC01M010	Cord Set	3	Male	Female	Straight-Straight	TPE	Yellow	Anodized Aluminum	18	10M
C3AD01M002	Cord Set	3	Male	Female	Straight-Right Angle	TPE	Yellow	Anodized Aluminum	18	2M
C3AD01M005	Cord Set	3	Male	Female	Straight-Right Angle	TPE	Yellow	Anodized Aluminum	18	5M
C3AD01M010	Cord Set	3	Male	Female	Straight-Right Angle	TPE	Yellow	Anodized Aluminum	18	10M
C3BC01M002	Cord Set	3	Male	Female	Right Angle-Straight	TPE	Yellow	Anodized Aluminum	18	2M
C3BC01M005	Cord Set	3	Male	Female	Right Angle-Straight	TPE	Yellow	Anodized Aluminum	18	5M
C3BC01M010	Cord Set	3	Male	Female	Right Angle-Straight	TPE	Yellow	Anodized Aluminum	18	10M
C3BD01M002	Cord Set	3	Male	Female	Right Angle-Right Angle	TPE	Yellow	Anodized Aluminum	18	2M
C3BD01M005	Cord Set	3	Male	Female	Right Angle-Right Angle	TPE	Yellow	Anodized Aluminum	18	5M
C3BD01M010	Cord Set	3	Male	Female	Right Angle-Right Angle	TPE	Yellow	Anodized Aluminum	18	10M
C4AC02M002	Cord Set	4	Male	Female	Straight-Straight	TPE	Yellow	Anodized Aluminum	18	2M
C4AC02M005	Cord Set	4	Male	Female	Straight-Straight	TPE	Yellow	Anodized Aluminum	18	5M
C4AC02M010	Cord Set	4	Male	Female	Straight-Straight	TPE	Yellow	Anodized Aluminum	18	10M
C4AD02M002	Cord Set	4	Male	Female	Straight-Right Angle	TPE	Yellow	Anodized Aluminum	18	2M
C4AD02M005	Cord Set	4	Male	Female	Straight-Right Angle	TPE	Yellow	Anodized Aluminum	18	5M
C4AD02M010	Cord Set	4	Male	Female	Straight-Right Angle	TPE	Yellow	Anodized Aluminum	18	10M
C4BC02M002	Cord Set	4	Male	Female	Right Angle-Straight	TPE	Yellow	Anodized Aluminum	18	2M

C48C02M005	Cord Set	4	Male	Female	Right Angle-Straight	TPE	Yellow	Anodized Aluminum	18	5M
C48C02M010	Cord Set	4	Male	Female	Right Angle-Straight	TPE	Yellow	Anodized Aluminum	18	10M
C48D02M002	Cord Set	4	Male	Female	Right Angle-Right Angle	TPE	Yellow	Anodized Aluminum	18	2M
C48D02M005	Cord Set	4	Male	Female	Right Angle-Right Angle	TPE	Yellow	Anodized Aluminum	18	5M
C48D02M010	Cord Set	4	Male	Female	Right Angle-Right Angle	TPE	Yellow	Anodized Aluminum	18	10M
C5AC03M002	Cord Set	5	Male	Female	Straight-Straight	TPE	Yellow	Anodized Aluminum	18	2M
C5AC03M005	Cord Set	5	Male	Female	Straight-Straight	TPE	Yellow	Anodized Aluminum	18	5M
C5AC03M010	Cord Set	5	Male	Female	Straight-Straight	TPE	Yellow	Anodized Aluminum	18	10M
C5AD03M002	Cord Set	5	Male	Female	Straight-Right Angle	TPE	Yellow	Anodized Aluminum	18	2M
C5AD03M005	Cord Set	5	Male	Female	Straight-Right Angle	TPE	Yellow	Anodized Aluminum	18	5M
C5AD03M010	Cord Set	5	Male	Female	Straight-Right Angle	TPE	Yellow	Anodized Aluminum	18	10M
C5BC03M002	Cord Set	5	Male	Female	Right Angle-Straight	TPE	Yellow	Anodized Aluminum	18	2M
C5BC03M005	Cord Set	5	Male	Female	Right Angle-Straight	TPE	Yellow	Anodized Aluminum	18	5M
C5BC03M010	Cord Set	5	Male	Female	Right Angle-Straight	TPE	Yellow	Anodized Aluminum	18	10M
C5BD03M002	Cord Set	5	Male	Female	Right Angle-Right Angle	TPE	Yellow	Anodized Aluminum	18	2M
C5BD03M005	Cord Set	5	Male	Female	Right Angle-Right Angle	TPE	Yellow	Anodized Aluminum	18	5M
C5BD03M010	Cord Set	5	Male	Female	Right Angle-Right Angle	TPE	Yellow	Anodized Aluminum	18	10M

Mueller Electric | 2850 Gilchrist Rd, Building 5A, Akron, OH 44305 | 800.955.2629 | www.muellerelectric.com

17


**M12 Cables: Double-Ended Cables**

- PVC shielded or TPE unshielded jacket insulation
- Nickel-plated brass or anodized aluminum coupling nut material
- Standard cable lengths are 2, 5 & 10 meters

Other cable lengths available upon request

Part Number	Cordset / Receptacle	Pin Count	Head Configuration		Plug Body	Cable Type	Cable Color	Coupling Nut Material	AWG	Cable Length (Meters)
			# 1	# 2						
C3AC04M002	Cord Set	3	Male	Female	Straight-Straight	PVC	Yellow	Nickel-Plated Brass	22	2M
C3AC04M005	Cord Set	3	Male	Female	Straight-Straight	PVC	Yellow	Nickel-Plated Brass	22	5M
C3AC04M010	Cord Set	3	Male	Female	Straight-Straight	PVC	Yellow	Nickel-Plated Brass	22	10M
C3AD04M002	Cord Set	3	Male	Female	Straight-Right Angle	PVC	Yellow	Nickel-Plated Brass	22	2M
C3AD04M005	Cord Set	3	Male	Female	Straight-Right Angle	PVC	Yellow	Nickel-Plated Brass	22	5M
C3AD04M010	Cord Set	3	Male	Female	Straight-Right Angle	PVC	Yellow	Nickel-Plated Brass	22	10M
C3BC04M002	Cord Set	3	Male	Female	Right Angle-Straight	PVC	Yellow	Nickel-Plated Brass	22	2M
C3BC04M005	Cord Set	3	Male	Female	Right Angle-Straight	PVC	Yellow	Nickel-Plated Brass	22	5M
C3BC04M010	Cord Set	3	Male	Female	Right Angle-Straight	PVC	Yellow	Nickel-Plated Brass	22	10M
C3BD04M002	Cord Set	3	Male	Female	Right Angle-Right Angle	PVC	Yellow	Nickel-Plated Brass	22	2M

C3BD04M002	Cord Set	3	Male	Female	Right Angle-Right Angle	PVC	Yellow	Nickel-Plated Brass	22	5M
C3BD04M005	Cord Set	3	Male	Female	Right Angle-Right Angle	PVC	Yellow	Nickel-Plated Brass	22	5M
C3BD04M010	Cord Set	3	Male	Female	Right Angle-Right Angle	PVC	Yellow	Nickel-Plated Brass	22	10M
C4AC05M002	Cord Set	4	Male	Female	Straight-Straight	PVC	Yellow	Nickel-Plated Brass	22	2M
C4AC05M005	Cord Set	4	Male	Female	Straight-Straight	PVC	Yellow	Nickel-Plated Brass	22	5M
C4AC05M010	Cord Set	4	Male	Female	Straight-Straight	PVC	Yellow	Nickel-Plated Brass	22	10M
C4AD05M002	Cord Set	4	Male	Female	Straight-Right Angle	PVC	Yellow	Nickel-Plated Brass	22	2M
C4AD05M005	Cord Set	4	Male	Female	Straight-Right Angle	PVC	Yellow	Nickel-Plated Brass	22	5M
C4AD05M010	Cord Set	4	Male	Female	Straight-Right Angle	PVC	Yellow	Nickel-Plated Brass	22	10M
C4BC05M002	Cord Set	4	Male	Female	Right Angle-Straight	PVC	Yellow	Nickel-Plated Brass	22	2M
C4BC05M005	Cord Set	4	Male	Female	Right Angle-Straight	PVC	Yellow	Nickel-Plated Brass	22	5M
C4BC05M010	Cord Set	4	Male	Female	Right Angle-Straight	PVC	Yellow	Nickel-Plated Brass	22	10M
C4BD05M002	Cord Set	4	Male	Female	Right Angle-Right Angle	PVC	Yellow	Nickel-Plated Brass	22	2M
C4BD05M005	Cord Set	4	Male	Female	Right Angle-Right Angle	PVC	Yellow	Nickel-Plated Brass	22	5M
C4BD05M010	Cord Set	4	Male	Female	Right Angle-Right Angle	PVC	Yellow	Nickel-Plated Brass	22	10M
C5AC06M002	Cord Set	5	Male	Female	Straight-Straight	PVC	Yellow	Nickel-Plated Brass	22	2M
C5AC06M005	Cord Set	5	Male	Female	Straight-Straight	PVC	Yellow	Nickel-Plated Brass	22	5M
C5AC06M010	Cord Set	5	Male	Female	Straight-Straight	PVC	Yellow	Nickel-Plated Brass	22	10M
C5AD06M002	Cord Set	5	Male	Female	Straight-Right Angle	PVC	Yellow	Nickel-Plated Brass	22	2M
C5AD06M005	Cord Set	5	Male	Female	Straight-Right Angle	PVC	Yellow	Nickel-Plated Brass	22	5M
C5AD06M010	Cord Set	5	Male	Female	Straight-Right Angle	PVC	Yellow	Nickel-Plated Brass	22	10M
C5BC06M002	Cord Set	5	Male	Female	Right Angle-Straight	PVC	Yellow	Nickel-Plated Brass	22	2M
C5BC06M005	Cord Set	5	Male	Female	Right Angle-Straight	PVC	Yellow	Nickel-Plated Brass	22	5M
C5BC06M010	Cord Set	5	Male	Female	Right Angle-Straight	PVC	Yellow	Nickel-Plated Brass	22	10M
C5BD06M002	Cord Set	5	Male	Female	Right Angle-Right Angle	PVC	Yellow	Nickel-Plated Brass	22	2M
C5BD06M005	Cord Set	5	Male	Female	Right Angle-Right Angle	PVC	Yellow	Nickel-Plated Brass	22	5M
C5BD06M010	Cord Set	5	Male	Female	Right Angle-Right Angle	PVC	Yellow	Nickel-Plated Brass	22	10M

18 Mueller Electric | 2850 Gilchrist Rd, Building 5A, Akron, OH 44305 | 800.955.2629 | www.muellerelectric.com



Non-UL Listed Cables

- PVC or PUR jacket insulation
- Anodized aluminum coupling nut material
- Standard cable lengths are shown below

Other cable lengths available upon request

Part Number	Cordset / Receptacle	Pin Count	Head Configuration		Plug Body	Cable Type	Cable Color	Coupling Nut Material	AWG	Cable Length
			# 1	# 2						

AI-000709	Cordset	25	Male	Male	Straight-RS	PVC	Black	Anodized Aluminum	26	30"
AI-000712-100	Cordset	9	Male	Female	Straight-RS	PVC	Black	Anodized Aluminum	26	100'
AI-000712-3	Cordset	9	Male	Female	Straight-RS	PVC	Black	Anodized Aluminum	26	3'
BU-122730291	Cordset	4	Female	Open	Straight-M12	PVC	Black	Anodized Aluminum	22	1.5M
BU-122730424	Cordset	3	Male	Open	Straight-M12	PVC	Black	Anodized Aluminum	22	10M
BU-1402551	Cordset	12	Male	Female	Straight-M12	PUR	Black	Anodized Aluminum	26	3M
BU-1404940	Cordset	12	Male	Female	Straight-M12	PUR	Black	Anodized Aluminum	24	5M
BU-1406094	Cordset	8	Male	Open	Straight-M12	PVC	Black	Anodized Aluminum	24	2M
BU-1406105	Cordset	8	Female	Open	Straight-M12	PUR	Black	Anodized Aluminum	24	2M
BU-1406416	Cordset	12	Female	Open	Straight-M12	PUR	Black	Anodized Aluminum	26	20M
BU-1669848	Cordset	5	Female	Open	Straight-M12	PUR	Black	Anodized Aluminum	22	5M
BU-1682935	Cordset	5	Female	Open	Straight-M12	PUR	Black	Anodized Aluminum	22	1.5M
BU-21349300405010	Cordset	4	Female	Open	Straight-M12	PVC	Black	Anodized Aluminum	22	1M
BU-22731031	Cordset	8	Female	Open	Right Angle-M12	PUR	Black	Anodized Aluminum	24	1.5M
BU-T4171110405002	Receptacle	5	Female	Open	Rear Panel Mount-M12	PVC	N/A	Anodized Aluminum	22	.5M



M12 Cables: Receptacles

- UI1007 PVC





- Front panel mount plug body
- Stainless steel coupling nut material
- Standard cable lengths are 2, 5 & 10 meters



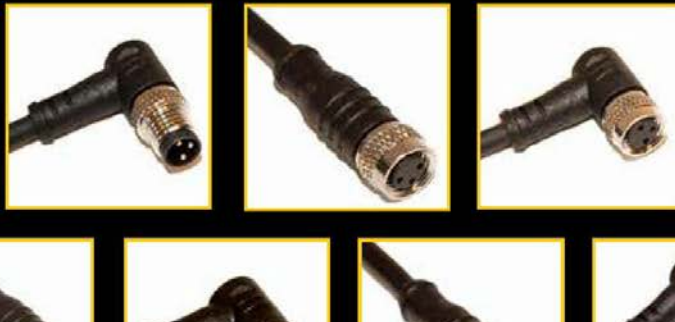
Other cable lengths available upon request

Part Number	Cordset / Receptacle	Pin Count	Head Configuration		Plug Body	Cable Type	Coupling Nut Material	AWG	Cable Length (Meters)
			# 1	# 2					
R3A07M002	Receptacle	3	Male	Open End	Front Panel Mount	PVC	Stainless Steel	18	2
R3A07M005	Receptacle	3	Male	Open End	Front Panel Mount	PVC	Stainless Steel	18	5
R3A07M010	Receptacle	3	Male	Open End	Front Panel Mount	PVC	Stainless Steel	18	10
R3C07M002	Receptacle	3	Female	Open End	Front Panel Mount	PVC	Stainless Steel	18	2
R3C07M005	Receptacle	3	Female	Open End	Front Panel Mount	PVC	Stainless Steel	18	5
R3C07M010	Receptacle	3	Female	Open End	Front Panel Mount	PVC	Stainless Steel	18	10
R4A08M002	Receptacle	4	Male	Open End	Front Panel Mount	PVC	Stainless Steel	18	2
R4A08M005	Receptacle	4	Male	Open End	Front Panel Mount	PVC	Stainless Steel	18	5
R4A08M010	Receptacle	4	Male	Open End	Front Panel Mount	PVC	Stainless Steel	18	10
R4C08M002	Receptacle	4	Female	Open End	Front Panel Mount	PVC	Stainless Steel	18	2
R4C08M005	Receptacle	4	Female	Open End	Front Panel Mount	PVC	Stainless Steel	18	5
R4C08M010	Receptacle	4	Female	Open End	Front Panel Mount	PVC	Stainless Steel	18	10
R5A09M002	Receptacle	5	Male	Open End	Front Panel Mount	PVC	Stainless Steel	18	2
R5A09M005	Receptacle	5	Male	Open End	Front Panel Mount	PVC	Stainless Steel	18	5
R5A09M010	Receptacle	5	Male	Open End	Front Panel Mount	PVC	Stainless Steel	18	10
R5C09M002	Receptacle	5	Female	Open End	Front Panel Mount	PVC	Stainless Steel	18	2
R5C09M005	Receptacle	5	Female	Open End	Front Panel Mount	PVC	Stainless Steel	18	5
R5C09M010	Receptacle	5	Female	Open End	Front Panel Mount	PVC	Stainless Steel	18	10



MUELLER ELECTRIC'S FACTORY AUTOMATION CABLE SERIES

M8 CABLES





Mueller Electric | 2850 Gilchrist Rd, Building 5A, Akron, OH 44305 | 800.955.2629 | www.muellerelectric.com

21



MUELLER ELECTRIC'S M8 FACTORY AUTOMATION CABLE SERIES



M8 Cables Full Listing: 3, 4, 6 & 8-Pin Positions, 22, 24 & 26 AWG

- Shielded PVC jacket insulation; unshielded PVC & un/shielded PUR also available
- Nickel-plated brass coupling nut material
- Standard cable lengths are 2, 5 & 10 meters
- Other cable lengths available upon request



Part Number	Cordset / Receptacle	Pin Count	Head Configuration		Plug Body	Cable Type	Cable Color	Coupling Nut Material	AWG	Cable Length (Meters)
			# 1	# 2						
C83A01M002	Cord Set	3	Male	Open End	Straight	PVC	Yellow	Nickel-Plated Brass	24	2M
C83A01M005	Cord Set	3	Male	Open End	Straight	PVC	Yellow	Nickel-Plated Brass	24	5M
C83A01M010	Cord Set	3	Male	Open End	Straight	PVC	Yellow	Nickel-Plated Brass	24	10M
C83B01M002	Cord Set	3	Male	Open End	Right Angle	PVC	Yellow	Nickel-Plated Brass	24	2M
C83B01M005	Cord Set	3	Male	Open End	Right Angle	PVC	Yellow	Nickel-Plated Brass	24	5M
C83B01M010	Cord Set	3	Male	Open End	Right Angle	PVC	Yellow	Nickel-Plated Brass	24	10M
C83C01M002	Cord Set	3	Female	Open End	Straight	PVC	Yellow	Nickel-Plated Brass	24	2M
C83C01M005	Cord Set	3	Female	Open End	Straight	PVC	Yellow	Nickel-Plated Brass	24	5M
C83C01M010	Cord Set	3	Female	Open End	Straight	PVC	Yellow	Nickel-Plated Brass	24	10M
C83D01M002	Cord Set	3	Female	Open End	Right Angle	PVC	Yellow	Nickel-Plated Brass	24	2M
C83D01M005	Cord Set	3	Female	Open End	Right Angle	PVC	Yellow	Nickel-Plated Brass	24	5M
C83D01M010	Cord Set	3	Female	Open End	Right Angle	PVC	Yellow	Nickel-Plated Brass	24	10M
C83AC01M002	Cord Set	3	Male	Female	Straight-Straight	PVC	Yellow	Nickel-Plated Brass	24	2M
C83AC01M005	Cord Set	3	Male	Female	Straight-Straight	PVC	Yellow	Nickel-Plated Brass	24	5M
C83AC01M010	Cord Set	3	Male	Female	Straight-Straight	PVC	Yellow	Nickel-Plated Brass	24	10M
C83AD01M002	Cord Set	3	Male	Female	Straight-Right Angle	PVC	Yellow	Nickel-Plated Brass	24	2M
C83AD01M005	Cord Set	3	Male	Female	Straight-Right Angle	PVC	Yellow	Nickel-Plated Brass	24	5M
C83AD01M010	Cord Set	3	Male	Female	Straight-Right Angle	PVC	Yellow	Nickel-Plated Brass	24	10M

C83BC01M002	Cord Set	3	Male	Female	Right Angle-Straight	PVC	Yellow	Nickel-Plated Brass	24	2M
C83BC01M005	Cord Set	3	Male	Female	Right Angle-Straight	PVC	Yellow	Nickel-Plated Brass	24	5M
C83BC01M010	Cord Set	3	Male	Female	Right Angle-Straight	PVC	Yellow	Nickel-Plated Brass	24	10M
C83BD01M002	Cord Set	3	Male	Female	Right Angle-Right Angle	PVC	Yellow	Nickel-Plated Brass	24	2M
C83BD01M005	Cord Set	3	Male	Female	Right Angle-Right Angle	PVC	Yellow	Nickel-Plated Brass	24	5M
C83BD01M010	Cord Set	3	Male	Female	Right Angle-Right Angle	PVC	Yellow	Nickel-Plated Brass	24	10M
C84A02M002	Cord Set	4	Male	Open End	Straight	PVC	Yellow	Nickel-Plated Brass	24	2M
C84A02M005	Cord Set	4	Male	Open End	Straight	PVC	Yellow	Nickel-Plated Brass	24	5M
C84A02M010	Cord Set	4	Male	Open End	Straight	PVC	Yellow	Nickel-Plated Brass	24	10M
C84B02M002	Cord Set	4	Male	Open End	Right Angle	PVC	Yellow	Nickel-Plated Brass	24	2M
C84B02M005	Cord Set	4	Male	Open End	Right Angle	PVC	Yellow	Nickel-Plated Brass	24	5M
C84B02M010	Cord Set	4	Male	Open End	Right Angle	PVC	Yellow	Nickel-Plated Brass	24	10M
C84C02M002	Cord Set	4	Female	Open End	Straight	PVC	Yellow	Nickel-Plated Brass	24	2M
C84C02M005	Cord Set	4	Female	Open End	Straight	PVC	Yellow	Nickel-Plated Brass	24	5M
C84C02M010	Cord Set	4	Female	Open End	Straight	PVC	Yellow	Nickel-Plated Brass	24	10M
C84D02M002	Cord Set	4	Female	Open End	Right Angle	PVC	Yellow	Nickel-Plated Brass	24	2M
C84D02M005	Cord Set	4	Female	Open End	Right Angle	PVC	Yellow	Nickel-Plated Brass	24	5M
C84D02M010	Cord Set	4	Female	Open End	Right Angle	PVC	Yellow	Nickel-Plated Brass	24	10M

22 Mueller Electric | 2850 Gilchrist Rd, Building 5A, Akron, OH 44305 | 800.955.2629 | www.muellerelectric.com



M8 Cables Full Listing: 3, 4, 6 & 8-Pin Positions, 22, 24 & 26 AWG

- Shielded PVC jacket insulation
- Unshielded PVC and un/shielded PUR jacket insulation also available
- Nickel-plated brass coupling nut material
- Standard cable lengths are 2, 5 & 10 meters



Other cable lengths available upon request

Part Number	Cordset / Receptacle	Pin Count	Head Configuration		Plug Body	Cable Type	Cable Color	Coupling Nut Material	AWG	Cable Length (Meters)
			# 1	# 2						
C84AC02M002	Cord Set	4	Male	Female	Straight-Straight	PVC	Yellow	Nickel-Plated Brass	24	2M
C84AC02M005	Cord Set	4	Male	Female	Straight-Straight	PVC	Yellow	Nickel-Plated Brass	24	5M
C84AC02M010	Cord Set	4	Male	Female	Straight-Straight	PVC	Yellow	Nickel-Plated Brass	24	10M
C84AD02M002	Cord Set	4	Male	Female	Straight-Right Angle	PVC	Yellow	Nickel-Plated Brass	24	2M
C84AD02M005	Cord Set	4	Male	Female	Straight-Right Angle	PVC	Yellow	Nickel-Plated Brass	24	5M
C84AD02M010	Cord Set	4	Male	Female	Straight-Right Angle	PVC	Yellow	Nickel-Plated Brass	24	10M
C84BC02M002	Cord Set	4	Male	Female	Right Angle-Straight	PVC	Yellow	Nickel-Plated Brass	24	2M
C84BC02M005	Cord Set	4	Male	Female	Right Angle-Straight	PVC	Yellow	Nickel-Plated Brass	24	5M
C84BC02M010	Cord Set	4	Male	Female	Right Angle-Straight	PVC	Yellow	Nickel-Plated Brass	24	10M

C848D02M002	Cord Set	4	Male	Female	Right Angle-Right Angle	PVC	Yellow	Nickel-Plated Brass	24	2M
C848D02M005	Cord Set	4	Male	Female	Right Angle-Right Angle	PVC	Yellow	Nickel-Plated Brass	24	5M
C848D02M010	Cord Set	4	Male	Female	Right Angle-Right Angle	PVC	Yellow	Nickel-Plated Brass	24	10M
C86A03M002	Cord Set	6	Male	Open End	Straight	PVC	Yellow	Nickel-Plated Brass	26	2M
C86A03M005	Cord Set	6	Male	Open End	Straight	PVC	Yellow	Nickel-Plated Brass	26	5M
C86A03M010	Cord Set	6	Male	Open End	Straight	PVC	Yellow	Nickel-Plated Brass	26	10M
C86B03M002	Cord Set	6	Male	Open End	Right Angle	PVC	Yellow	Nickel-Plated Brass	26	2M
C86B03M005	Cord Set	6	Male	Open End	Right Angle	PVC	Yellow	Nickel-Plated Brass	26	5M
C86B03M010	Cord Set	6	Male	Open End	Right Angle	PVC	Yellow	Nickel-Plated Brass	26	10M
C86C03M002	Cord Set	6	Female	Open End	Straight	PVC	Yellow	Nickel-Plated Brass	26	2M
C86C03M005	Cord Set	6	Female	Open End	Straight	PVC	Yellow	Nickel-Plated Brass	26	5M
C86C03M010	Cord Set	6	Female	Open End	Straight	PVC	Yellow	Nickel-Plated Brass	26	10M
C86D03M002	Cord Set	6	Female	Open End	Right Angle	PVC	Yellow	Nickel-Plated Brass	26	2M
C86D03M005	Cord Set	6	Female	Open End	Right Angle	PVC	Yellow	Nickel-Plated Brass	26	5M
C86D03M010	Cord Set	6	Female	Open End	Right Angle	PVC	Yellow	Nickel-Plated Brass	26	10M
C86AC03M002	Cord Set	6	Male	Female	Straight-Straight	PVC	Yellow	Nickel-Plated Brass	26	2M
C86AC03M005	Cord Set	6	Male	Female	Straight-Straight	PVC	Yellow	Nickel-Plated Brass	26	5M
C86AC03M010	Cord Set	6	Male	Female	Straight-Straight	PVC	Yellow	Nickel-Plated Brass	26	10M
C86AD03M002	Cord Set	6	Male	Female	Straight-Right Angle	PVC	Yellow	Nickel-Plated Brass	26	2M
C86AD03M005	Cord Set	6	Male	Female	Straight-Right Angle	PVC	Yellow	Nickel-Plated Brass	26	5M
C86AD03M010	Cord Set	6	Male	Female	Straight-Right Angle	PVC	Yellow	Nickel-Plated Brass	26	10M
C86BC03M002	Cord Set	6	Male	Female	Right Angle-Straight	PVC	Yellow	Nickel-Plated Brass	26	2M
C86BC03M005	Cord Set	6	Male	Female	Right Angle-Straight	PVC	Yellow	Nickel-Plated Brass	26	5M
C86BC03M010	Cord Set	6	Male	Female	Right Angle-Straight	PVC	Yellow	Nickel-Plated Brass	26	10M
C86BD03M002	Cord Set	6	Male	Female	Right Angle-Right Angle	PVC	Yellow	Nickel-Plated Brass	26	2M
C86BD03M005	Cord Set	6	Male	Female	Right Angle-Right Angle	PVC	Yellow	Nickel-Plated Brass	26	5M
C86BD03M010	Cord Set	6	Male	Female	Right Angle-Right Angle	PVC	Yellow	Nickel-Plated Brass	26	10M

Mueller Electric | 2850 Gilchrist Rd, Building 5A, Akron, OH 44305 | 800.955.2629 | www.muellerelectric.com

23


**M8 Cables Full Listing: 3, 4, 6 & 8-Pin Positions, 22, 24 & 26 AWG**

- Shielded PVC jacket insulation
- Unshielded PVC and un/shielded PUR jacket insulation also available
- Nickel-plated brass coupling nut material
- Standard cable lengths are 2, 5 & 10 meters

Other cable lengths available upon request

Part Number	Cordset / Receptacle	Pin Count	Head Configuration		Plug Body	Cable Type	Cable Color	Coupling Nut Material	AWG	Cable Length (Meters)
			# 1	# 2						

C88A04M002	Cord Set	8	Male	Open End	Straight	PVC	Yellow	Nickel-Plated Brass	26	2M
C88A04M005	Cord Set	8	Male	Open End	Straight	PVC	Yellow	Nickel-Plated Brass	26	5M
C88A04M010	Cord Set	8	Male	Open End	Straight	PVC	Yellow	Nickel-Plated Brass	26	10M
C88B04M002	Cord Set	8	Male	Open End	Right Angle	PVC	Yellow	Nickel-Plated Brass	26	2M
C88B04M005	Cord Set	8	Male	Open End	Right Angle	PVC	Yellow	Nickel-Plated Brass	26	5M
C88B04M010	Cord Set	8	Male	Open End	Right Angle	PVC	Yellow	Nickel-Plated Brass	26	10M
C88C04M002	Cord Set	8	Female	Open End	Straight	PVC	Yellow	Nickel-Plated Brass	26	2M
C88C04M005	Cord Set	8	Female	Open End	Straight	PVC	Yellow	Nickel-Plated Brass	26	5M
C88C04M010	Cord Set	8	Female	Open End	Straight	PVC	Yellow	Nickel-Plated Brass	26	10M
C88D04M002	Cord Set	8	Female	Open End	Right Angle	PVC	Yellow	Nickel-Plated Brass	26	2M
C88D04M005	Cord Set	8	Female	Open End	Right Angle	PVC	Yellow	Nickel-Plated Brass	26	5M
C88D04M010	Cord Set	8	Female	Open End	Right Angle	PVC	Yellow	Nickel-Plated Brass	26	10M
C88AC04M002	Cord Set	8	Male	Female	Straight-Straight	PVC	Yellow	Nickel-Plated Brass	26	2M
C88AC04M005	Cord Set	8	Male	Female	Straight-Straight	PVC	Yellow	Nickel-Plated Brass	26	5M
C88AC04M010	Cord Set	8	Male	Female	Straight-Straight	PVC	Yellow	Nickel-Plated Brass	26	10M
C88AD04M002	Cord Set	8	Male	Female	Straight-Right Angle	PVC	Yellow	Nickel-Plated Brass	26	2M
C88AD04M005	Cord Set	8	Male	Female	Straight-Right Angle	PVC	Yellow	Nickel-Plated Brass	26	5M
C88AD04M010	Cord Set	8	Male	Female	Straight-Right Angle	PVC	Yellow	Nickel-Plated Brass	26	10M
C88BC04M002	Cord Set	8	Male	Female	Right Angle-Straight	PVC	Yellow	Nickel-Plated Brass	26	2M
C88BC04M005	Cord Set	8	Male	Female	Right Angle-Straight	PVC	Yellow	Nickel-Plated Brass	26	5M
C88BC04M010	Cord Set	8	Male	Female	Right Angle-Straight	PVC	Yellow	Nickel-Plated Brass	26	10M
C88BD04M002	Cord Set	8	Male	Female	Right Angle-Right Angle	PVC	Yellow	Nickel-Plated Brass	26	2M
C88BD04M005	Cord Set	8	Male	Female	Right Angle-Right Angle	PVC	Yellow	Nickel-Plated Brass	26	5M
C88BD04M010	Cord Set	8	Male	Female	Right Angle-Right Angle	PVC	Yellow	Nickel-Plated Brass	26	10M



M8 Cables: Straight Mold Types

© 2022 Mueller Electric Company





- Shielded PVC jacket insulation
- Unshielded PVC and un/shielded PUR jacket insulation also available
- Nickel-plated brass coupling nut material
- Standard cable lengths are 2, 5 & 10 meters



Other cable lengths available upon request

Part Number	Cordset / Receptacle	Pin Count	Head Configuration		Plug Body	Cable Type	Cable Color	Coupling Nut Material	AWG	Cable Length (Meters)
			# 1	# 2						
C83A01M002	Cord Set	3	Male	Open End	Straight	PVC	Yellow	Nickel-Plated Brass	24	2M
C83A01M005	Cord Set	3	Male	Open End	Straight	PVC	Yellow	Nickel-Plated Brass	24	5M
C83A01M010	Cord Set	3	Male	Open End	Straight	PVC	Yellow	Nickel-Plated Brass	24	10M
C83C01M002	Cord Set	3	Female	Open End	Straight	PVC	Yellow	Nickel-Plated Brass	24	2M
C83C01M005	Cord Set	3	Female	Open End	Straight	PVC	Yellow	Nickel-Plated Brass	24	5M
C83C01M010	Cord Set	3	Female	Open End	Straight	PVC	Yellow	Nickel-Plated Brass	24	10M
C84A02M002	Cord Set	4	Male	Open End	Straight	PVC	Yellow	Nickel-Plated Brass	24	2M
C84A02M005	Cord Set	4	Male	Open End	Straight	PVC	Yellow	Nickel-Plated Brass	24	5M
C84A02M010	Cord Set	4	Male	Open End	Straight	PVC	Yellow	Nickel-Plated Brass	24	10M
C84C02M002	Cord Set	4	Female	Open End	Straight	PVC	Yellow	Nickel-Plated Brass	24	2M
C84C02M005	Cord Set	4	Female	Open End	Straight	PVC	Yellow	Nickel-Plated Brass	24	5M
C84C02M010	Cord Set	4	Female	Open End	Straight	PVC	Yellow	Nickel-Plated Brass	24	10M
C86A03M002	Cord Set	6	Male	Open End	Straight	PVC	Yellow	Nickel-Plated Brass	26	2M
C86A03M005	Cord Set	6	Male	Open End	Straight	PVC	Yellow	Nickel-Plated Brass	26	5M
C86A03M010	Cord Set	6	Male	Open End	Straight	PVC	Yellow	Nickel-Plated Brass	26	10M
C86C03M002	Cord Set	6	Female	Open End	Straight	PVC	Yellow	Nickel-Plated Brass	26	2M
C86C03M005	Cord Set	6	Female	Open End	Straight	PVC	Yellow	Nickel-Plated Brass	26	5M
C86C03M010	Cord Set	6	Female	Open End	Straight	PVC	Yellow	Nickel-Plated Brass	26	10M
C88A04M002	Cord Set	8	Male	Open End	Straight	PVC	Yellow	Nickel-Plated Brass	26	2M
C88A04M005	Cord Set	8	Male	Open End	Straight	PVC	Yellow	Nickel-Plated Brass	26	5M
C88A04M010	Cord Set	8	Male	Open End	Straight	PVC	Yellow	Nickel-Plated Brass	26	10M
C88C04M002	Cord Set	8	Female	Open End	Straight	PVC	Yellow	Nickel-Plated Brass	26	2M
C88C04M005	Cord Set	8	Female	Open End	Straight	PVC	Yellow	Nickel-Plated Brass	26	5M
C88C04M010	Cord Set	8	Female	Open End	Straight	PVC	Yellow	Nickel-Plated Brass	26	10M



M8 Cables: Right-Angle Mold Types

- Shielded PVC jacket insulation
- Unshielded PVC and un/shielded PUR jacket insulation also available
- Nickel-plated brass coupling nut material
- Standard cable lengths are 2, 5 & 10 meters



Other cable lengths available upon request

Part Number	Cordset / Receptacle	Pin Count	Head Configuration		Plug Body	Cable Type	Cable Color	Coupling Nut Material	AWG	Cable Length (Meters)
			# 1	# 2						
C83B01M002	Cord Set	3	Male	Open End	Right Angle	PVC	Yellow	Nickel-Plated Brass	24	2M
C83B01M005	Cord Set	3	Male	Open End	Right Angle	PVC	Yellow	Nickel-Plated Brass	24	5M
C83B01M010	Cord Set	3	Male	Open End	Right Angle	PVC	Yellow	Nickel-Plated Brass	24	10M
C83D01M002	Cord Set	3	Female	Open End	Right Angle	PVC	Yellow	Nickel-Plated Brass	24	2M
C83D01M005	Cord Set	3	Female	Open End	Right Angle	PVC	Yellow	Nickel-Plated Brass	24	5M
C83D01M010	Cord Set	3	Female	Open End	Right Angle	PVC	Yellow	Nickel-Plated Brass	24	10M
C84B02M002	Cord Set	4	Male	Open End	Right Angle	PVC	Yellow	Nickel-Plated Brass	24	2M
C84B02M005	Cord Set	4	Male	Open End	Right Angle	PVC	Yellow	Nickel-Plated Brass	24	5M
C84B02M010	Cord Set	4	Male	Open End	Right Angle	PVC	Yellow	Nickel-Plated Brass	24	10M
C84D02M002	Cord Set	4	Female	Open End	Right Angle	PVC	Yellow	Nickel-Plated Brass	24	2M
C84D02M005	Cord Set	4	Female	Open End	Right Angle	PVC	Yellow	Nickel-Plated Brass	24	5M
C84D02M010	Cord Set	4	Female	Open End	Right Angle	PVC	Yellow	Nickel-Plated Brass	24	10M
C86B03M002	Cord Set	6	Male	Open End	Right Angle	PVC	Yellow	Nickel-Plated Brass	26	2M
C86B03M005	Cord Set	6	Male	Open End	Right Angle	PVC	Yellow	Nickel-Plated Brass	26	5M
C86B03M010	Cord Set	6	Male	Open End	Right Angle	PVC	Yellow	Nickel-Plated Brass	26	10M
C86D03M002	Cord Set	6	Female	Open End	Right Angle	PVC	Yellow	Nickel-Plated Brass	26	2M
C86D03M005	Cord Set	6	Female	Open End	Right Angle	PVC	Yellow	Nickel-Plated Brass	26	5M
C86D03M010	Cord Set	6	Female	Open End	Right Angle	PVC	Yellow	Nickel-Plated Brass	26	10M
C88B04M002	Cord Set	8	Male	Open End	Right Angle	PVC	Yellow	Nickel-Plated Brass	26	2M
C88B04M005	Cord Set	8	Male	Open End	Right Angle	PVC	Yellow	Nickel-Plated Brass	26	5M
C88B04M010	Cord Set	8	Male	Open End	Right Angle	PVC	Yellow	Nickel-Plated Brass	26	10M
C88D04M002	Cord Set	8	Female	Open End	Right Angle	PVC	Yellow	Nickel-Plated Brass	26	2M
C88D04M005	Cord Set	8	Female	Open End	Right Angle	PVC	Yellow	Nickel-Plated Brass	26	5M
C88D04M010	Cord Set	8	Female	Open End	Right Angle	PVC	Yellow	Nickel-Plated Brass	26	10M



M8 Cables: Open-Ended Cables

- Shielded PVC jacket insulation
- Unshielded PVC and un/shielded PUR jacket insulation also available
- Nickel-plated brass coupling nut material
- Standard cable lengths are 2, 5 & 10 meters



Other cable lengths available upon request

Part Number	Cordset / Receptacle	Pin Count	Head Configuration		Plug Body	Cable Type	Cable Color	Coupling Nut Material	AWG	Cable Length (Meters)
			# 1	# 2						
C83A01M002	Cord Set	3	Male	Open End	Straight	PVC	Yellow	Nickel-Plated Brass	24	2M
C83A01M005	Cord Set	3	Male	Open End	Straight	PVC	Yellow	Nickel-Plated Brass	24	5M
C83A01M010	Cord Set	3	Male	Open End	Straight	PVC	Yellow	Nickel-Plated Brass	24	10M
C83B01M002	Cord Set	3	Male	Open End	Right Angle	PVC	Yellow	Nickel-Plated Brass	24	2M
C83B01M005	Cord Set	3	Male	Open End	Right Angle	PVC	Yellow	Nickel-Plated Brass	24	5M
C83B01M010	Cord Set	3	Male	Open End	Right Angle	PVC	Yellow	Nickel-Plated Brass	24	10M
C83C01M002	Cord Set	3	Female	Open End	Straight	PVC	Yellow	Nickel-Plated Brass	24	2M
C83C01M005	Cord Set	3	Female	Open End	Straight	PVC	Yellow	Nickel-Plated Brass	24	5M
C83C01M010	Cord Set	3	Female	Open End	Straight	PVC	Yellow	Nickel-Plated Brass	24	10M
C83D01M002	Cord Set	3	Female	Open End	Right Angle	PVC	Yellow	Nickel-Plated Brass	24	2M
C83D01M005	Cord Set	3	Female	Open End	Right Angle	PVC	Yellow	Nickel-Plated Brass	24	5M
C83D01M010	Cord Set	3	Female	Open End	Right Angle	PVC	Yellow	Nickel-Plated Brass	24	10M
C84A02M002	Cord Set	4	Male	Open End	Straight	PVC	Yellow	Nickel-Plated Brass	24	2M
C84A02M005	Cord Set	4	Male	Open End	Straight	PVC	Yellow	Nickel-Plated Brass	24	5M
C84A02M010	Cord Set	4	Male	Open End	Straight	PVC	Yellow	Nickel-Plated Brass	24	10M
C84B02M002	Cord Set	4	Male	Open End	Right Angle	PVC	Yellow	Nickel-Plated Brass	24	2M
C84B02M005	Cord Set	4	Male	Open End	Right Angle	PVC	Yellow	Nickel-Plated Brass	24	5M
C84B02M010	Cord Set	4	Male	Open End	Right Angle	PVC	Yellow	Nickel-Plated Brass	24	10M

C84C02M002	Cord Set	4	Female	Open End	Straight	PVC	Yellow	Nickel-Plated Brass	24	2M
C84C02M005	Cord Set	4	Female	Open End	Straight	PVC	Yellow	Nickel-Plated Brass	24	5M
C84C02M010	Cord Set	4	Female	Open End	Straight	PVC	Yellow	Nickel-Plated Brass	24	10M
C84D02M002	Cord Set	4	Female	Open End	Right Angle	PVC	Yellow	Nickel-Plated Brass	24	2M
C84D02M005	Cord Set	4	Female	Open End	Right Angle	PVC	Yellow	Nickel-Plated Brass	24	5M
C84D02M010	Cord Set	4	Female	Open End	Right Angle	PVC	Yellow	Nickel-Plated Brass	24	10M
C86A03M002	Cord Set	6	Male	Open End	Straight	PVC	Yellow	Nickel-Plated Brass	26	2M
C86A03M005	Cord Set	6	Male	Open End	Straight	PVC	Yellow	Nickel-Plated Brass	26	5M
C86A03M010	Cord Set	6	Male	Open End	Straight	PVC	Yellow	Nickel-Plated Brass	26	10M
C86B03M002	Cord Set	6	Male	Open End	Right Angle	PVC	Yellow	Nickel-Plated Brass	26	2M
C86B03M005	Cord Set	6	Male	Open End	Right Angle	PVC	Yellow	Nickel-Plated Brass	26	5M
C86B03M010	Cord Set	6	Male	Open End	Right Angle	PVC	Yellow	Nickel-Plated Brass	26	10M
C86C03M002	Cord Set	6	Female	Open End	Straight	PVC	Yellow	Nickel-Plated Brass	26	2M
C86C03M005	Cord Set	6	Female	Open End	Straight	PVC	Yellow	Nickel-Plated Brass	26	5M
C86C03M010	Cord Set	6	Female	Open End	Straight	PVC	Yellow	Nickel-Plated Brass	26	10M
C86D03M002	Cord Set	6	Female	Open End	Right Angle	PVC	Yellow	Nickel-Plated Brass	26	2M
C86D03M005	Cord Set	6	Female	Open End	Right Angle	PVC	Yellow	Nickel-Plated Brass	26	5M
C86D03M010	Cord Set	6	Female	Open End	Right Angle	PVC	Yellow	Nickel-Plated Brass	26	10M

Mueller Electric | 2850 Gilchrist Rd, Building 5A, Akron, OH 44305 | 800.955.2629 | www.muellerelectric.com

27




M8 Cables: Open-Ended Cables

- Shielded PVC jacket insulation
- Unshielded PVC and un/shielded PUR jacket insulation also available
- Nickel-plated brass coupling nut material
- Standard cable lengths are 2, 5 & 10 meters



Other cable lengths available upon request

Part Number	Cordset / Receptacle	Pin Count	Head Configuration		Plug Body	Cable Type	Cable Color	Coupling Nut Material	AWG	Cable Length (Meters)
			# 1	# 2						
C88A04M002	Cord Set	8	Male	Open End	Straight	PVC	Yellow	Nickel-Plated Brass	26	2M
C88A04M005	Cord Set	8	Male	Open End	Straight	PVC	Yellow	Nickel-Plated Brass	26	5M
C88A04M010	Cord Set	8	Male	Open End	Straight	PVC	Yellow	Nickel-Plated Brass	26	10M
C88B04M002	Cord Set	8	Male	Open End	Right Angle	PVC	Yellow	Nickel-Plated Brass	26	2M
C88B04M005	Cord Set	8	Male	Open End	Right Angle	PVC	Yellow	Nickel-Plated Brass	26	5M
C88B04M010	Cord Set	8	Male	Open End	Right Angle	PVC	Yellow	Nickel-Plated Brass	26	10M
C88C04M002	Cord Set	8	Female	Open End	Straight	PVC	Yellow	Nickel-Plated Brass	26	2M
C88C04M005	Cord Set	8	Female	Open End	Straight	PVC	Yellow	Nickel-Plated Brass	26	5M
C88C04M010	Cord Set	8	Female	Open End	Straight	PVC	Yellow	Nickel-Plated Brass	26	10M

C88D04M002	Cord Set	8	Female	Open End	Right Angle	PVC	Yellow	Nickel-Plated Brass	26	2M
C88D04M005	Cord Set	8	Female	Open End	Right Angle	PVC	Yellow	Nickel-Plated Brass	26	5M
C88D04M010	Cord Set	8	Female	Open End	Right Angle	PVC	Yellow	Nickel-Plated Brass	26	10M



M8 Cables: Double-Ended Cables

- Shielded PVC jacket insulation
- Unshielded PVC and un/shielded PUR jacket insulation also available
- Nickel-plated brass coupling nut material
- Standard cable lengths are 2, 5 & 10 meters

Other cable lengths available upon request



Part Number	Cordset / Receptacle	Pin Count	Head Configuration		Plug Body	Cable Type	Cable Color	Coupling Nut Material	AWG	Cable Length (Meters)
			# 1	# 2						

C83AC01M002	Cord Set	3	Male	Female	Straight-Straight	PVC	Yellow	Nickel-Plated Brass	24	2M
C83AC01M005	Cord Set	3	Male	Female	Straight-Straight	PVC	Yellow	Nickel-Plated Brass	24	5M
C83AC01M010	Cord Set	3	Male	Female	Straight-Straight	PVC	Yellow	Nickel-Plated Brass	24	10M
C83AD01M002	Cord Set	3	Male	Female	Straight-Right Angle	PVC	Yellow	Nickel-Plated Brass	24	2M
C83AD01M005	Cord Set	3	Male	Female	Straight-Right Angle	PVC	Yellow	Nickel-Plated Brass	24	5M
C83AD01M010	Cord Set	3	Male	Female	Straight-Right Angle	PVC	Yellow	Nickel-Plated Brass	24	10M
C83BC01M002	Cord Set	3	Male	Female	Right Angle-Straight	PVC	Yellow	Nickel-Plated Brass	24	2M
C83BC01M005	Cord Set	3	Male	Female	Right Angle-Straight	PVC	Yellow	Nickel-Plated Brass	24	5M
C83BC01M010	Cord Set	3	Male	Female	Right Angle-Straight	PVC	Yellow	Nickel-Plated Brass	24	10M
C83BD01M002	Cord Set	3	Male	Female	Right Angle-Right Angle	PVC	Yellow	Nickel-Plated Brass	24	2M
C83BD01M005	Cord Set	3	Male	Female	Right Angle-Right Angle	PVC	Yellow	Nickel-Plated Brass	24	5M
C83BD01M010	Cord Set	3	Male	Female	Right Angle-Right Angle	PVC	Yellow	Nickel-Plated Brass	24	10M
C84AC02M002	Cord Set	4	Male	Female	Straight-Straight	PVC	Yellow	Nickel-Plated Brass	24	2M
C84AC02M005	Cord Set	4	Male	Female	Straight-Straight	PVC	Yellow	Nickel-Plated Brass	24	5M
C84AC02M010	Cord Set	4	Male	Female	Straight-Straight	PVC	Yellow	Nickel-Plated Brass	24	10M
C84AD02M002	Cord Set	4	Male	Female	Straight-Right Angle	PVC	Yellow	Nickel-Plated Brass	24	2M
C84AD02M005	Cord Set	4	Male	Female	Straight-Right Angle	PVC	Yellow	Nickel-Plated Brass	24	5M
C84AD02M010	Cord Set	4	Male	Female	Straight-Right Angle	PVC	Yellow	Nickel-Plated Brass	24	10M
C84BC02M002	Cord Set	4	Male	Female	Right Angle-Straight	PVC	Yellow	Nickel-Plated Brass	24	2M
C84BC02M005	Cord Set	4	Male	Female	Right Angle-Straight	PVC	Yellow	Nickel-Plated Brass	24	5M
C84BC02M010	Cord Set	4	Male	Female	Right Angle-Straight	PVC	Yellow	Nickel-Plated Brass	24	10M
C84BD02M002	Cord Set	4	Male	Female	Right Angle-Right Angle	PVC	Yellow	Nickel-Plated Brass	24	2M
C84BD02M005	Cord Set	4	Male	Female	Right Angle-Right Angle	PVC	Yellow	Nickel-Plated Brass	24	5M
C84BD02M010	Cord Set	4	Male	Female	Right Angle-Right Angle	PVC	Yellow	Nickel-Plated Brass	24	10M
C86AC03M002	Cord Set	6	Male	Female	Straight-Straight	PVC	Yellow	Nickel-Plated Brass	26	2M
C86AC03M005	Cord Set	6	Male	Female	Straight-Straight	PVC	Yellow	Nickel-Plated Brass	26	5M
C86AC03M010	Cord Set	6	Male	Female	Straight-Straight	PVC	Yellow	Nickel-Plated Brass	26	10M
C86AD03M002	Cord Set	6	Male	Female	Straight-Right Angle	PVC	Yellow	Nickel-Plated Brass	26	2M
C86AD03M005	Cord Set	6	Male	Female	Straight-Right Angle	PVC	Yellow	Nickel-Plated Brass	26	5M
C86AD03M010	Cord Set	6	Male	Female	Straight-Right Angle	PVC	Yellow	Nickel-Plated Brass	26	10M
C86BC03M002	Cord Set	6	Male	Female	Right Angle-Straight	PVC	Yellow	Nickel-Plated Brass	26	2M
C86BC03M005	Cord Set	6	Male	Female	Right Angle-Straight	PVC	Yellow	Nickel-Plated Brass	26	5M
C86BC03M010	Cord Set	6	Male	Female	Right Angle-Straight	PVC	Yellow	Nickel-Plated Brass	26	10M
C86BD03M002	Cord Set	6	Male	Female	Right Angle-Right Angle	PVC	Yellow	Nickel-Plated Brass	26	2M
C86BD03M005	Cord Set	6	Male	Female	Right Angle-Right Angle	PVC	Yellow	Nickel-Plated Brass	26	5M
C86BD03M010	Cord Set	6	Male	Female	Right Angle-Right Angle	PVC	Yellow	Nickel-Plated Brass	26	10M



M8 Cables: Double-Ended Cables



- Shielded PVC jacket insulation
- Unshielded PVC and un/shielded PUR jacket insulation also available
- Nickel-plated brass coupling nut material
- Standard cable lengths are 2, 5 & 10 meters



Other cable lengths available upon request

Part Number	Cordset / Receptacle	Pin Count	Head Configuration		Plug Body	Cable Type	Cable Color	Coupling Nut Material	AWG	Cable Length (Meters)
			# 1	# 2						
C88AC04M002	Cord Set	8	Male	Female	Straight-Straight	PVC	Yellow	Nickel-Plated Brass	26	2M
C88AC04M005	Cord Set	8	Male	Female	Straight-Straight	PVC	Yellow	Nickel-Plated Brass	26	5M
C88AC04M010	Cord Set	8	Male	Female	Straight-Straight	PVC	Yellow	Nickel-Plated Brass	26	10M
C88AD04M002	Cord Set	8	Male	Female	Straight-Right Angle	PVC	Yellow	Nickel-Plated Brass	26	2M
C88AD04M005	Cord Set	8	Male	Female	Straight-Right Angle	PVC	Yellow	Nickel-Plated Brass	26	5M
C88AD04M010	Cord Set	8	Male	Female	Straight-Right Angle	PVC	Yellow	Nickel-Plated Brass	26	10M
C88BC04M002	Cord Set	8	Male	Female	Right Angle-Straight	PVC	Yellow	Nickel-Plated Brass	26	2M
C88BC04M005	Cord Set	8	Male	Female	Right Angle-Straight	PVC	Yellow	Nickel-Plated Brass	26	5M
C88BC04M010	Cord Set	8	Male	Female	Right Angle-Straight	PVC	Yellow	Nickel-Plated Brass	26	10M
C88BD04M002	Cord Set	8	Male	Female	Right Angle-Right Angle	PVC	Yellow	Nickel-Plated Brass	26	2M
C88BD04M005	Cord Set	8	Male	Female	Right Angle-Right Angle	PVC	Yellow	Nickel-Plated Brass	26	5M
C88BD04M010	Cord Set	8	Male	Female	Right Angle-Right Angle	PVC	Yellow	Nickel-Plated Brass	26	10M



M8 Cables: Receptacles

- UL1007 PVC
- Stainless steel coupling nut material
- Standard cable lengths are 2, 5 & 10 meters

Other cable lengths available upon request



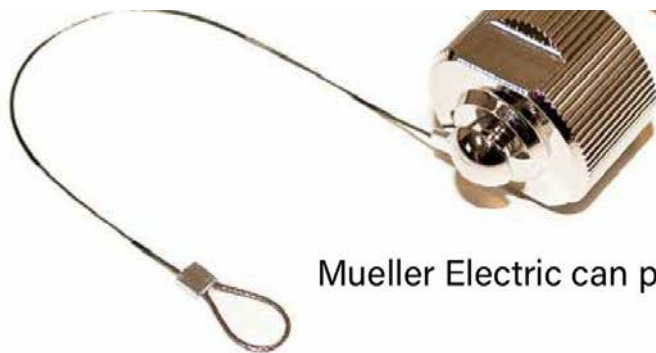
Part Number	Cordset / Receptacle	Pin Count	Head Configuration		Plug Body	Cable Type	Coupling Nut Material	AWG	Cable Length (Meters)
			# 1	# 2					
R83A17M002	Receptacle	3	Male	Open End	Front Panel Mount	PVC	Stainless Steel	24	2
R83A17M005	Receptacle	3	Male	Open End	Front Panel Mount	PVC	Stainless Steel	24	5
R83A17M010	Receptacle	3	Male	Open End	Front Panel Mount	PVC	Stainless Steel	24	10
R83C17M002	Receptacle	3	Female	Open End	Front Panel Mount	PVC	Stainless Steel	24	2
R83C17M005	Receptacle	3	Female	Open End	Front Panel Mount	PVC	Stainless Steel	24	5
R83C17M010	Receptacle	3	Female	Open End	Front Panel Mount	PVC	Stainless Steel	24	10
R84A18M002	Receptacle	4	Male	Open End	Front Panel Mount	PVC	Stainless Steel	24	2
R84A18M005	Receptacle	4	Male	Open End	Front Panel Mount	PVC	Stainless Steel	24	5
R84A18M010	Receptacle	4	Male	Open End	Front Panel Mount	PVC	Stainless Steel	24	10
R84C18M002	Receptacle	4	Female	Open End	Front Panel Mount	PVC	Stainless Steel	24	2
R84C18M005	Receptacle	4	Female	Open End	Front Panel Mount	PVC	Stainless Steel	24	5
R84C18M010	Receptacle	4	Female	Open End	Front Panel Mount	PVC	Stainless Steel	24	10
R86A19M002	Receptacle	6	Male	Open End	Front Panel Mount	PVC	Stainless Steel	26	2
R86A19M005	Receptacle	6	Male	Open End	Front Panel Mount	PVC	Stainless Steel	26	5
R86A19M010	Receptacle	6	Male	Open End	Front Panel Mount	PVC	Stainless Steel	26	10
R86C19M002	Receptacle	6	Female	Open End	Front Panel Mount	PVC	Stainless Steel	26	2
R86C19M005	Receptacle	6	Female	Open End	Front Panel Mount	PVC	Stainless Steel	26	5
R86C19M010	Receptacle	6	Female	Open End	Front Panel Mount	PVC	Stainless Steel	26	10
R88A20M002	Receptacle	8	Male	Open End	Front Panel Mount	PVC	Stainless Steel	26	2
R88A20M005	Receptacle	8	Male	Open End	Front Panel Mount	PVC	Stainless Steel	26	5
R88A20M010	Receptacle	8	Male	Open End	Front Panel Mount	PVC	Stainless Steel	26	10
R88C20M002	Receptacle	8	Female	Open End	Front Panel Mount	PVC	Stainless Steel	26	2
R88C20M005	Receptacle	8	Female	Open End	Front Panel Mount	PVC	Stainless Steel	26	5
R88C20M010	Receptacle	8	Female	Open End	Front Panel Mount	PVC	Stainless Steel	26	10



ADDITIONAL CABLES



7/8-16UN - M12



End Caps for 7/8-16UN Cables

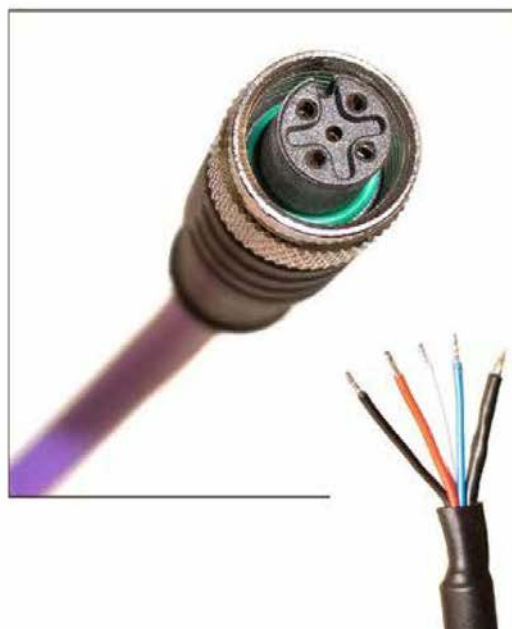
Mueller Electric can provide accessories as well.



32 Mueller Electric | 2850 Gilchrist Rd, Building 5A, Akron, OH 44305 | 800.955.2629 | www.muellerelectric.com

MUELLER

Purple Ethernet Cable, 5-Pin



Mueller Electric offers a wide range of Ethernet cables.
Here are just a couple of examples.



Blue Ethernet Cable, 4-Pin

Mueller Electric | 2850 Gilchrist Rd, Building 5A, Akron, OH 44305 | 800.955.2629 | www.muellerelectric.com

33

MUELLER





Open-Ended M12 Cable With Junction Box

Custom-Designed Instrumentation Cables Available Upon Request



Open-Ended M12 Cable With Junction Box



7/8 - 16UN, 8-Pin
Instrumentation Cable

M23 cables available through Mueller Electric.
All English and Metric sizes available.



7/8 - 16UN, 6-Pin Instrumentation Cable & Male Receptacle

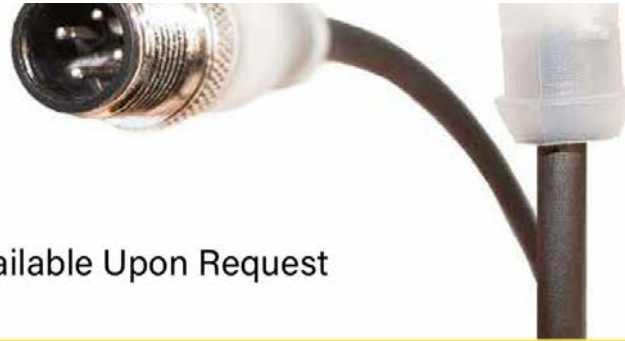


M12 - M8 Instrumentation Cable, 4-Pin



M12 - M12 Light-Up
Ethernet Cable, 4-Pin





Custom Cable Designs Available Upon Request

36 Mueller Electric | 2850 Gilchrist Rd, Building 5A, Akron, OH 44305 | 800.955.2629 | www.muellerelectric.com



M8 - M8 Molded Y-Connector Cable



Field Installable Connectors, Male & Female



Y Connector

Mueller Electric | 2850 Gilchrist Rd, Building 5A, Akron, OH 44305 | 800.955.2629 | www.muellerelectric.com

37



MUELLER ELECTRIC SPECIALIZES IN CUSTOM CABLE ASSEMBLY ORDERS

Unique challenges call for customized solutions.

Mueller Electric specializes in custom cable solutions in addition to standard OEM orders.

In business for more than a century, **Mueller Electric** has become the electronic expert industry leaders have come to trust. Ever since our beginning more than a century ago, Mueller Electric's name has become synony-

mous with quality, durability and reliability. Throughout the years, our attention has remained squarely focused on the quality aspects of our products. As we've always said, Mueller products "outlast all others and cost less because they last."

Mueller Electric specializes in cable assemblies that are built to exact customer specifications. Short- and medium-production run quantities are welcome. These assemblies may incorporate standard or non-standard components and can be built to designated CE industry standards. Our in-house engineering, molding and production capabilities keep your project in plain view. Typical applications are for the industrial automation, test & measurement, medical, aerospace, military & defense, telecom and automotive markets.

Give **Mueller Electric** a try and let us prove our high standards to you. Contact our sales department to discuss your custom assembly needs. Be sure to ask about our sample assembly and prototype program.

**CONTACT MUELLER ELECTRIC TO GET CUSTOM CABLE ASSEMBLIES
DESIGNED TO FIT YOUR UNIQUE NEEDS!**

800.955.2629

sales@muellerelectric.com



INDUSTRIES SERVED

Factory Automation
Manufacturing
Automotive
Transportation
Medical Equipment
Aerospace
Military & Defense
Information Technology
Data Communications
Telecommunications
Test & Measurement

WARRANTY

Mueller Electric products are warranted to be free from defects in materials and workmanship for a period of 12 months. For the full text of the Terms & Conditions of the Warranty, please go to www.MuellerElectric.com/Warranty

Information in this catalog is subject to change without notice.

Mueller Electric reserves the right to make modifications to the information presented.



MuellerElectric.com

T: 800.955.2629

T: 330.780.2525

F: 330.780.2524

sales@muellerelectric.com

© 2021 by Mueller Electric. All rights reserved.
No part of this publication may be reproduced without written permission.

www.muellerelectric.com

