

Rack Dimension

L	*	W	*	H
228.6	*	431.8	*	44 (1U) mm
9	*	17	*	1.73(1U) inch



■ Features

- Wide operating voltage range $\pm 10\text{-}60\text{VDC}$
- Two independent buses support mixed-voltage operation
- Supports two independent inputs for redundant system
- 10 GMT-fuse protected outputs per bus / 20 system total
- 100A max input current per bus / 200A system total
- 15A max load protection determined by fuse rating
- Front panel LED indicators for input power and fuse status
- One form C alarm contact per bus
- 3 years warranty

■ Applications

- Mixed-voltage system
- Redundant power system
- Telecom system
- Microwave radio system
- LMR base station or repeater sites

■ GTIN CODE

MW Search: <https://www.meanwell.com/serviceGTIN.aspx>

■ Description

RDU-20G Series is a Rackmount Distribution Unit in 19" 1U form factor that provides independent dual bus capability for redundant or mixed-voltage system. Each bus is rated at 100A max input and provides 10 GMT-fuse protected outputs. Load protection up to 15A is determined by fuse rating. Front panel LED indicators provide input power and fuse status for each bus. Independent Form C alarm contact is available for each bus for easy integration to an existing monitoring system. All inputs and outputs are isolated from the frame.

■ Model Encoding

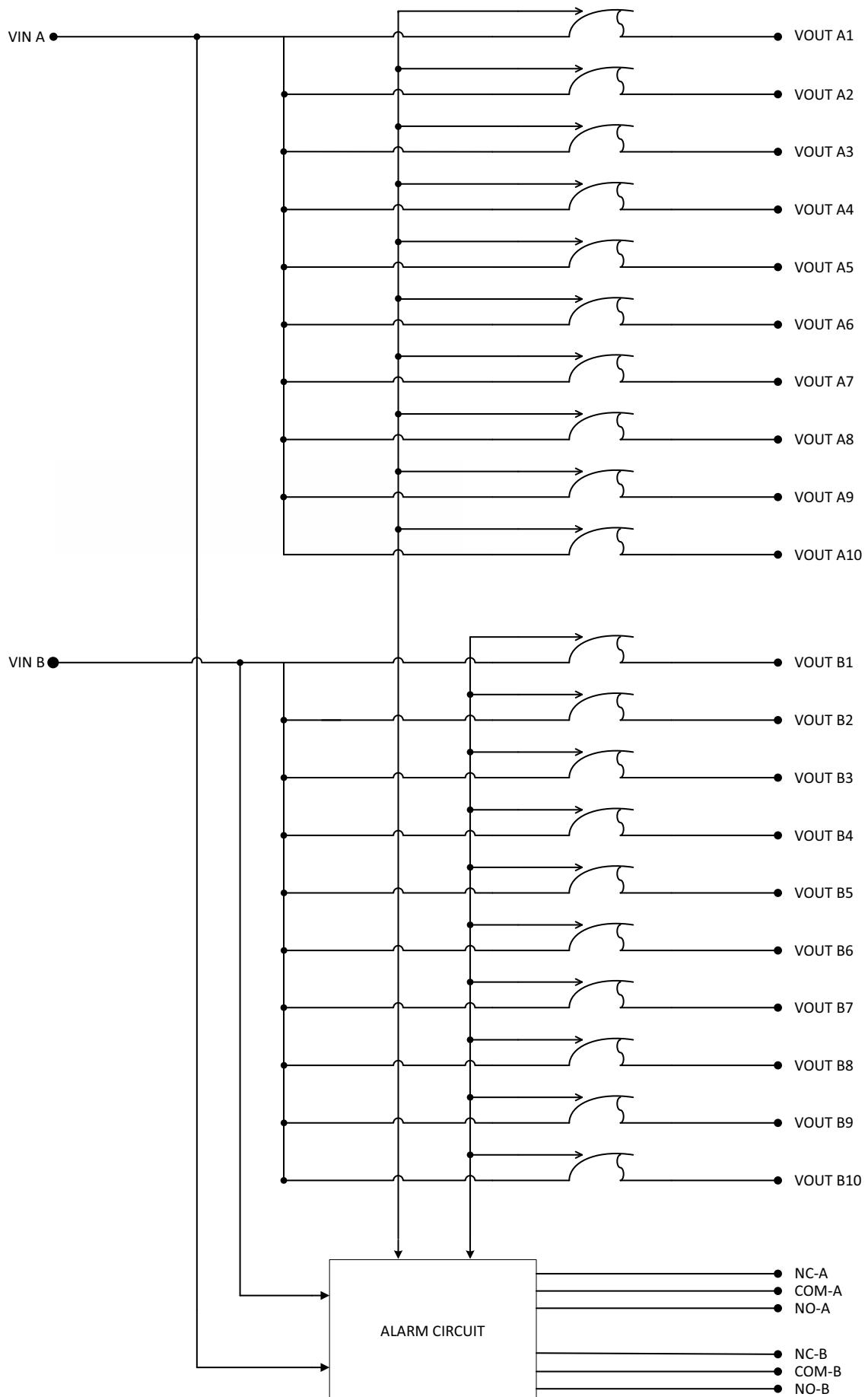
RDU 20 G - 200

- Maximum Output Current
- G: GMT Fuse
- Number of outputs
- Series name

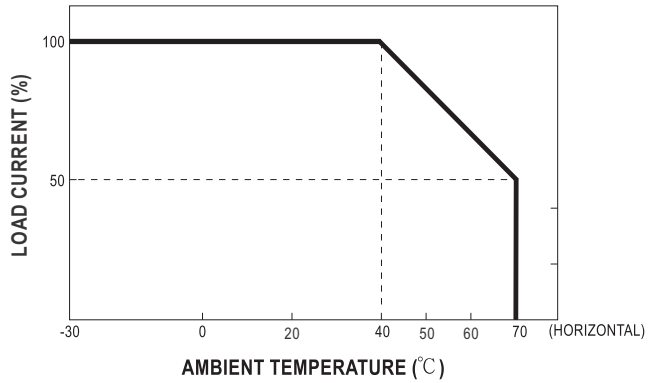
SPECIFICATION

MODEL		RDU20G-200		
INPUT	OPERATING VOLTAGE RANGE	±10-60VDC		
	RATEDINPUT CURRENT PER BUS	100A peak, 2 buses total		
	TOTAL SYSTEM INPUT CURRENT	200A peak		
OUTPUT	RATED CURRENT PER CHANNEL	15A continious		
	VOLTAGE DROP AT MAX LOAD	≤ 450mV		
	POWER DRAIN AT NO LOAD	≤ 350mV		
PROTECTION	PROTECTION TYPE AND LEVEL (NOTE 1)	GMT fuse, fuse size up to 15A		
ENVIRONMENT	WORKING TEMPERATURE	-30 ~ +70°C (Refer to “Derating Curve”)		
	WORKING HUMIDITY	20 ~ 95% RH non-condensing		
FUNCTION	INPUT POWER LED INDICATOR	Green, one per bus ON: input power available OFF: input power absent		
	FUSE STATUS LED INDICATOR	Red, one per bus ON: any fuse open on bus OFF: all fuses on bus in normal operation		
	FORM C RELAY	NO/COM/NC connections, one set per bus OFF (relay energized): input okay AND all fuses on bus in normal operation ON (relay de-energized): in input OR any fuse on bus open Relay contact rating: 24VDC/1A		
EMC	EMC EMISSION	Parameter	Standard	Test Level / Note
		Radiation	EN55032	Class A
			FCC part 15B	Class A
	EMC EMISSION	Parameter	Standard	Test Level / Note
		ESD	EN61000-4-2	Level 3, 8KV air; Level 2, 4KV contact, criteria A
		RF Immunity	EN61000-4-3	Level 2, Field Strength: 3V/m, criteria A
		Magnetic Field Immunity	EN61000-4-6	Level 1, Field Strength: 1A/m, criteria A
OTHER	DIMENSIONS	Rack 228.6*431.8**44mm (9*17*1.74in, L*W*H with mounting bracket)		
	PACKING	3.88Kg; Packing TBA		
NOTE	1. Compatible fuse brand/model: Eaton Bussmann GMT Series Fast-acting Indicating Fuse AND Littelfuse 481 Series Alarm Indicating Fuse			

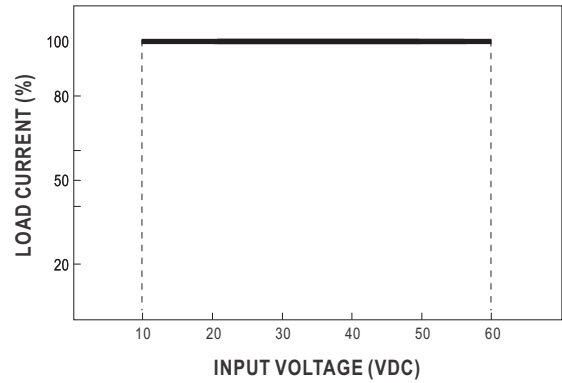
Block Diagram



Derating Curve



Static Characteristics



Function Manual

1. Form C Contact

- Alarm signal is connected through NC/COM/NO terminals, one set per bus.
- An external voltage source is required for this function. The maximum applied voltage is 24Vdc and the maximum sink current is 1A. Please refer to Fig 1.1.
- Table 1.1 explains the alarm function built in the distribution unit

OPERATING CONDITIONS	A-Side Form C Contact		B-Side Form C Contact	
	NC(1)-COM(3)	NO(2)-COM(3)	NC(1)-COM(3)	NO(2)-COM(3)
A-side input okay AND all fuses normal	closed	open	-	-
A-side input absent OR any fuses open	open	closed	-	-
B-side input okay AND all fuses normal	-	-	closed	open
B-side input absent OR any fuses open	-	-	open	closed

Table 1.1: Explanation of Alarm Signal

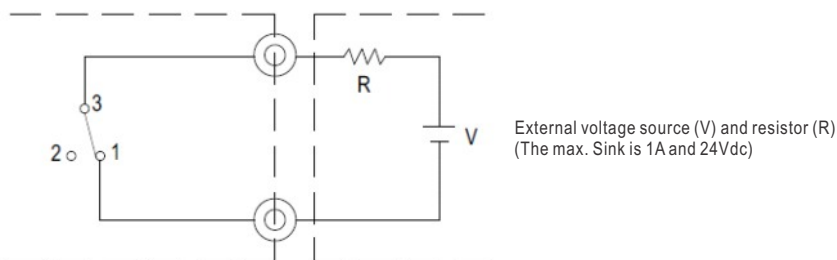
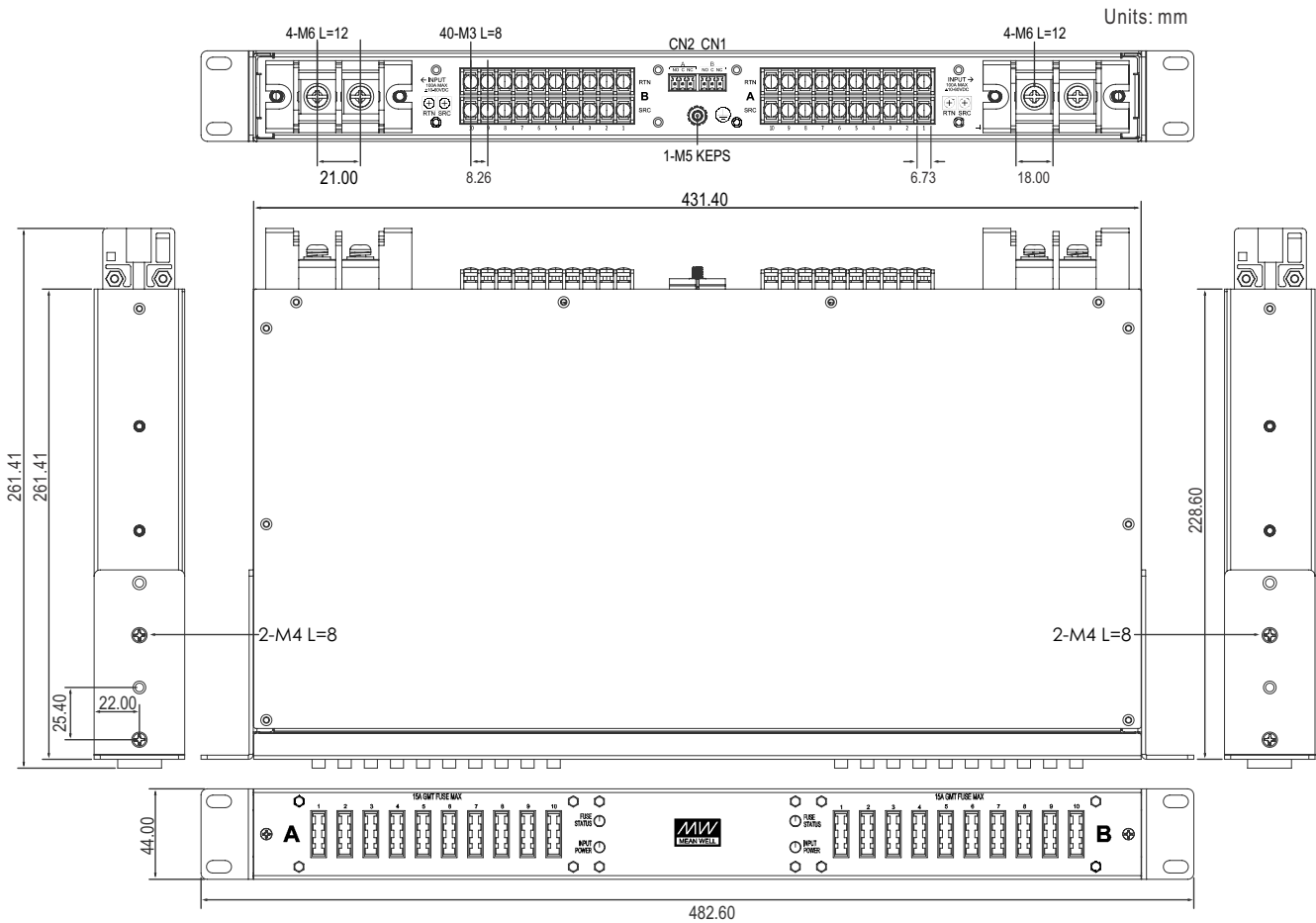
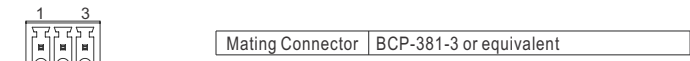


Fig 1.1 Circuit of alarm signal via relay contact

■ Mechanical Specification

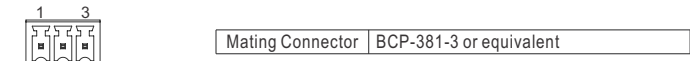


※ Control Pin No. Assignment (CN1) : BCH-381V- 3 or equivalent



Pin No.	Function	Description
1	NO-A	Normally open form C alarm relay contact for Bus A. Maximum applied voltage 24VDC, maximum sink current 1A.
2	COM-A	Common for Bus A alarm relays.
3	NC-A	Normally closed form C alarm relay contact for Bus A. Maximum applied voltage 24VDC, maximum sink current 1A.

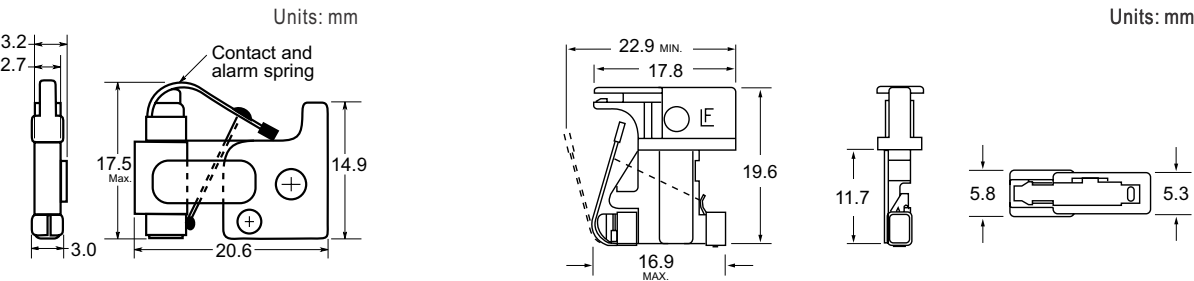
※ Control Pin No. Assignment (CN2) : BCH-381V- 3 or equivalent



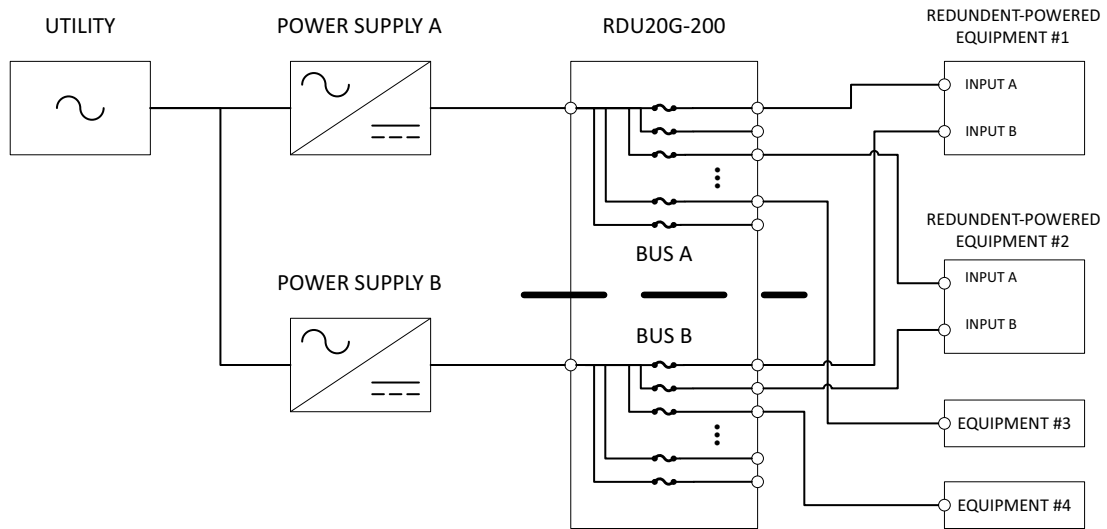
Pin No.	Function	Description
1	NO-B	Normally open form C alarm relay contact for Bus B. Maximum applied voltage 24VDC, maximum sink current 1A.
2	COM-B	Common for Bus B alarm relays.
3	NC-B	Normally closed form C alarm relay contact for Bus B. Maximum applied voltage 24VDC, maximum sink current 1A.

※ Compatible Fuse: Eaton Bussmann GMT Series

※ Compatible Fuse: Littelfuse 481 Series



■ Redundant Configuration



■ Multiple Voltage Configuration

