

# MX150 CONNECTOR SYSTEM

PRODUCT REFRESH

FEBRUARY 2023

*creating connections for life*

**molex**



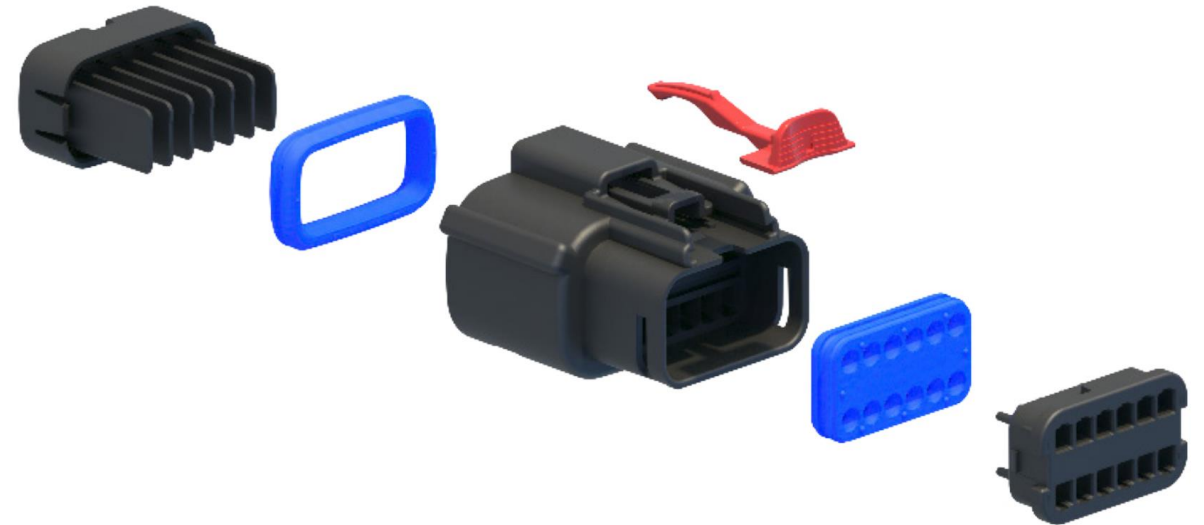
# MX150 SEALED AND UNSEALED CONNECTOR SYSTEM

In the Automotive and Commercial Vehicles industries, engineers are continually challenged to provide more electronics in the same space, accommodating faster assembly times to reduce production costs.

The MX150 Connector System offers a reduced package size over traditional USCAR connectors and is designed for simple and secure assembly.

## Product Availability

- Wire-to-wire Mat Sealed Systems
- Mat Sealed Compatible Systems
- Wire-to-wire Cable Sealed Systems
- Wire-to-wire Unsealed Systems
- Accessories
  - Terminals
  - Backshells
  - Cavity Plugs



*creating connections for life*

**molex**

# KEY PRODUCT MESSAGES

## Complete System Solution

MX150 offers a complete package solution for 1.50mm connector systems. Designers can choose compatible male and female connectors and terminals that are provided in various plating options to meet specific application needs.



## Flexibility & Space Saving

Space and mass savings are more crucial than ever for internal combustion engine (ICE)-powered and battery electric vehicles due to challenging EPA regulations and the need to reduce battery size. MX150 is a product family constantly evolving to offer various circuit sizes and hybrid connector options. As a result, designers benefit from flexibility and space savings.



## High-Quality & Reliability

The MX150 product family is a proven and industry-tested offering with excellent warranty performance. In addition, the products offer highly engineered connector housings, sealing technology and position assurance designs that ensure high-quality connections, making MX150 a go-to solution for designers.



# MARKETS & APPLICATIONS

## **Automotive**

Automotive vehicles  
Commercial vehicles  
Industrial vehicles and equipment  
Recreational vehicles

## **Commercial Vehicle**

ATVs  
Marine: under-dash wiring, lighting  
Forklifts

## **Industrial Automation**

Robotics  
Industrial machines and motors



*Automotive Vehicles*



*Robotics*



*ATVs*

# PRODUCT FEATURES & ADVANTAGES

## Connector position assurance (CPA) option available

Helps to eliminate accidental disconnection between connectors

## Grommet cap

Protects mat seal and helps ensure proper alignment of the terminals

## Mat seal technology for MX150 (1.50mm) terminals

Helps eliminate the need for individual cable seals thereby reducing package size

## Preassembled terminal position assurance (TPA) housing

Helps ensure crimped terminal leads are properly locked into connector

## Single- and dual-row V0 versions available

Meet stringent safety requirements

## One-piece 3.50mm-pitch housing

Offers a compact connector and helps eliminate cost assembly



Panel Mounts  
2x3, 2x6 and 2x10 circuit  
sizes available.



Twist-Head Sealed  
Bulk-head connectors  
2x6, 2x4, 2x6, 2x8 circuit  
sizes available



Headers  
R/A headers and unshrouded headers available





# PRODUCT AT-A-GLANCE

## Sealed Connector System

Circuit Sizes (Single and Double Row)	2, 3, 4, 5, 6, 8k 12, 16, 20
Genders	Male and Female
Polarization Options	Keys: A, B, C, D
Colors	Black, Light Gray, Dark Gray, Stone Gray
Industry Interface	USCAR-2, USCAR-21 and GMW3191
Operating Specifications	Current up to 22A, -40C to 150C
Other Features	Optional clip slot (11.00mm), TPA, CPA and Custom Void Patterns

## Hybrid Sealed Connector System

Circuit Sizes	8-way, 9-way, 10-way, 12-way, 16-way
Genders	Male and Female
Polarization Options	Keys: A, B, C, D
Colors	Black, Light Gray, Dark Gray, Stone Gray
Industry Interface	USCAR-2, USCAR-21 and GMW3191
Other Features	Optional clip slot (11.00mm), TPA, CPA and Custom Void Patterns

# PRODUCT & APPLICATION MATRIX

## Trends

Zonal Architecture  
Electrification (EV)  
Autonomy

## Markets

ICE Vehicles  
Electric Vehicle  
Commercial Vehicles  
Recreational Vehicles  
Truck and bus  
Agriculture  
Lawn and garden  
Boats

## Transportation Applications

ADAS  
Compute clusters  
Zonal modules – I/O aggregators  
EV charging stations  
Battery Management Systems  
Safety  
Door modules  
HVAC  
Interior/exterior lighting  
Power seat modules  
Power steering  
Powertrain  
Engine control modules  
Motor/ transmission ECU



THANK YOU

*creating connections for life*

**molex**