

# LattePanda 3 Delta

A Pocket-sized Hackable Computer for Mega Creativity

# Brand Profile



LattePanda was founded by three makers in 2015. We provide innovative and accessible SBCs with the latest technology for makers and developers, to help them achieve ideas or projects without threshold.

Over the past seven years, LattePanda has expanded from makers to industry scenarios. Our products have become the key parts of various industrial projects, and fostering a strong developer community.

In near future, LattePanda strives to be the most innovative provider to creating solutions for IoT, edge computing, AI applications.



# Brand Profile

**2015**

LattePanda Team was established.  
LattePanda V1 came out and caught the attention of users around the world.

**2017**

Established a high-quality LattePanda community, and attracted **12,000+** registered users worldwide.

**2019**

Optimized supply chain management and developed new services for the business partners.

**2021**

The new LattePanda 3 Delta was **624%** funded in the crowdfunding campaign.

**2016**

LattePanda V1 funded successfully. **4,000+** backers pledged about **\$600,000+** to help bring this project to life.

**2018**

LattePanda Alpha & Delta came out and raised **\$600,000+** in crowdfunding.

**2020**

Explored the industrial application of LattePanda.

# LattePanda 3 Delta

Faster than Ever

A Pocket-sized Hackable Computer for  
Mega Creativity



New Arrival



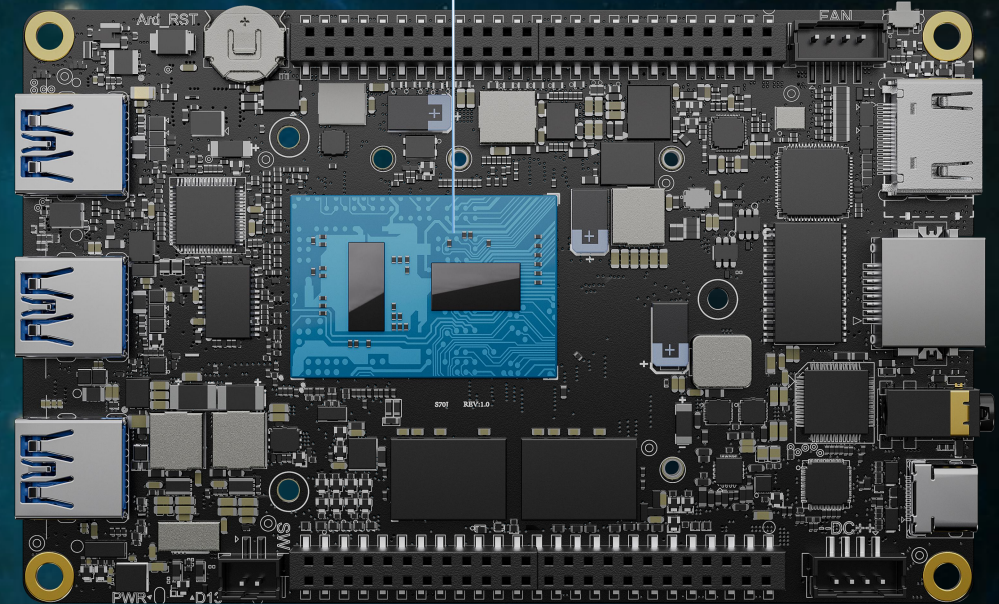
# LattePanda 3 Delta - Faster than Ever

**CPU** - the Intel 11th generation mobile 4-core processor **N5105** with up to **2.9GHz** burst frequency.

**2X** Faster CPU  
Performance

**3X** Faster GPU  
Performance

\*Compare to the previous generation



# LattePanda 3 Delta - Faster than Ever

Better cooling sustains  
the best performance

**50%** larger  
cooling area

**WI-FI 6**

Up to 2.4Gb/s throughput

2.7x faster than Wi-Fi 5

2x larger than the previous  
generation

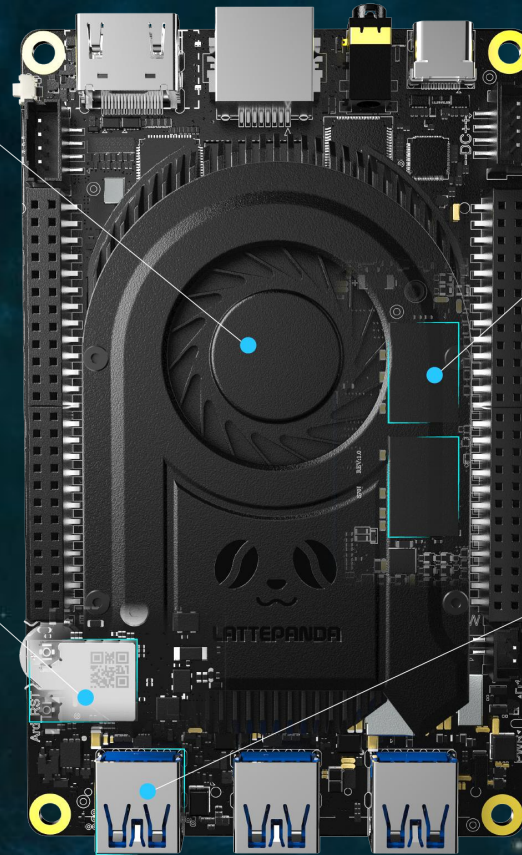
**8GB MEMORY**

2933MHZ LPDDR4

**USB 3.2 GEN2 X1**

Up to 10Gb/s data transfer

2x faster than USB 3.2 gen1 x1





# LattePanda 3 Delta - Pocket Size

78% of iPhone 13 Pro Max Size



Previous  
LattePanda Delta



LattePanda 3 Delta



iPhone 13 Pro Max

Ultra-thin Design



16MM

# LattePanda 3 Delta - Windows & Linux Compatible

Ubuntu



Windows 10



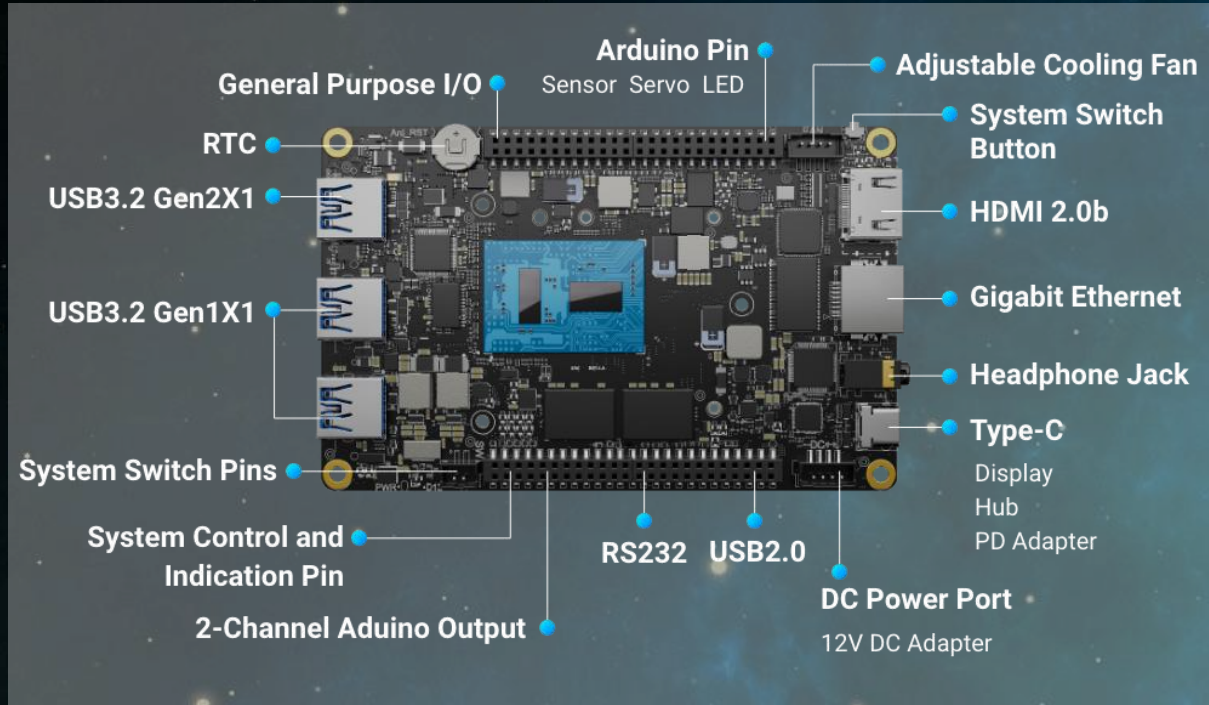
Windows 11



LattePanda 3 Delta supports both Windows 10 and Linux OS.  
Moreover, Windows 11 can also be run on it.



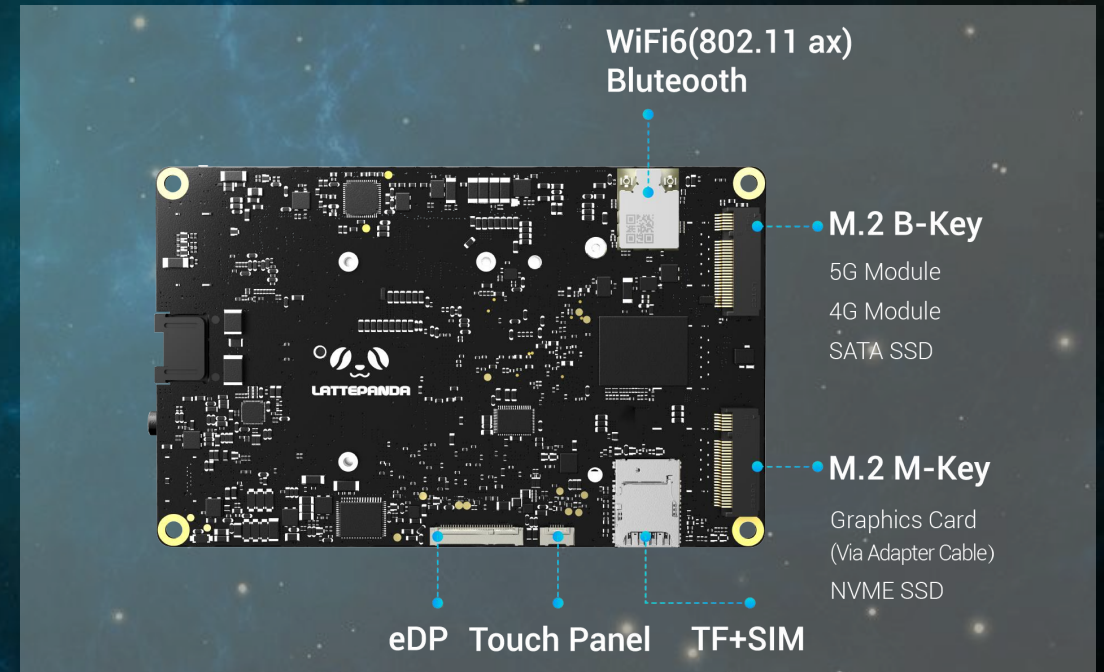
# LattePanda 3 Delta - True Hackability and Rich Playability













Front

With up to 42 expandable interfaces, LattePanda 3 Delta can be connected to various devices.

Back

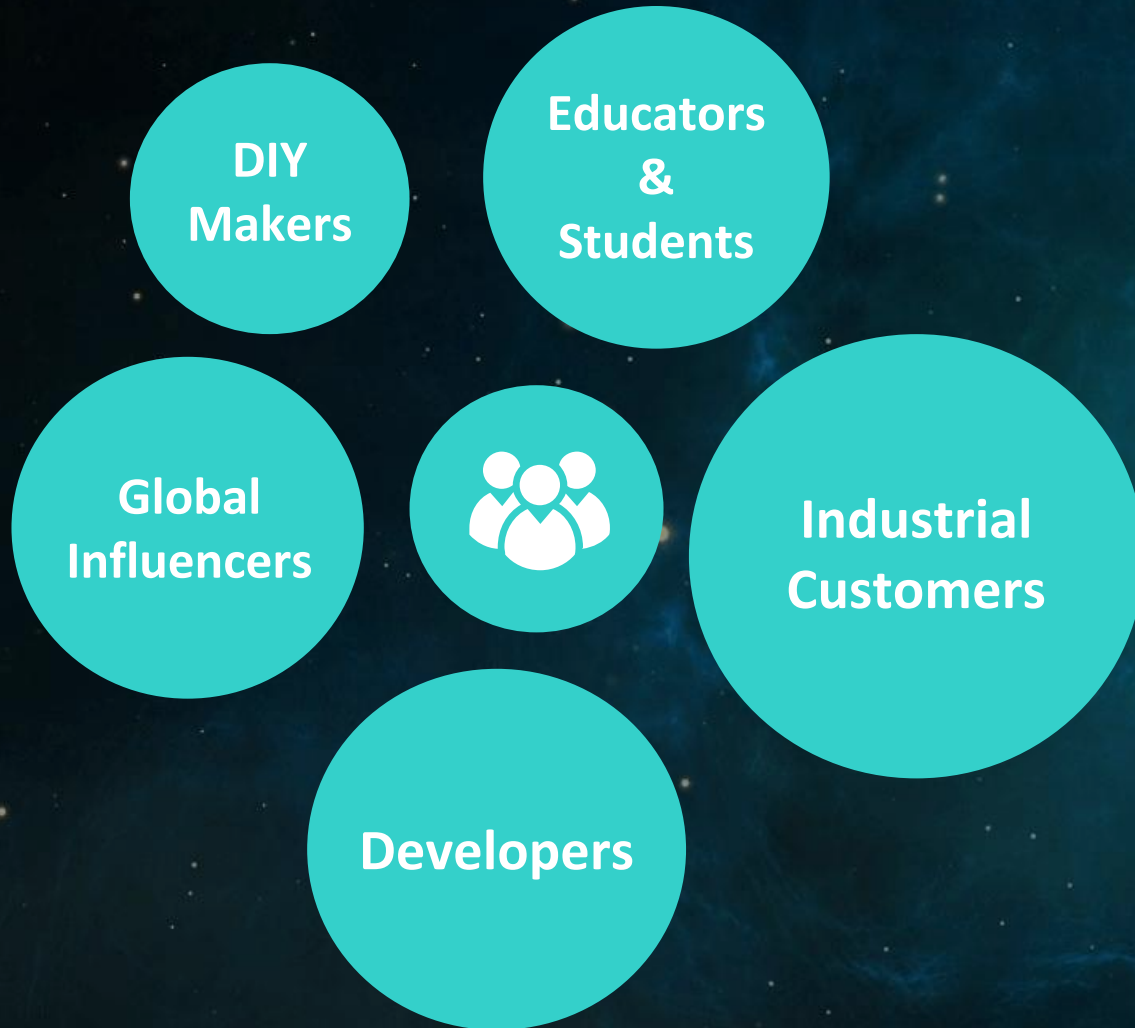


\*[CLICK HERE](#) to Learn more about LattePanda 3 Delta

Product	LattePanda V1	LattePanda Delta	LattePanda 3 Delta	UDOO BOLT V3	UP Xtreme i3
Picture					
Processor	Intel Atom® x5-Z8350	Intel® Celeron® N4100	Intel® Celeron® N5105	AMD Ryzen™ Embedded V1202B	Intel® Core™ i3-8145UE
CPU Spec.	4-Core,4-Thread 1.44 ~ 1.92GHz	4-Core,4-Thread 1.10 ~ 2.40GHz	4-Core,4-Thread 2.00 ~ 2.90GHz	2-Core,4-Thread 2.30 ~3.20 GHz	2-Core,4-Thread 2.20 ~3.90 GHz
CPU Benchmark (PassMark CPU Mark)	165 	370 	793 	780 	820 
Memory	2GB/4GB DDR3L 1600MHz	4GB LPDDR4 2400MHz	8GB LPDDR4 2933MHz	None	8GB DDR4 2400MHz
Storage	32GB/64GB eMMC	32GB eMMC	64GB eMMC	32GB eMMC	64GB eMMC
Wireless	802.11n, 2.4G, up to 150Mbps Bluetooth 4.0	802.11 ac, 2.4G & 5G, up to 433Mbps Bluetooth 5.0	802.11ax, 2.4G & 5G(160MHz), Up to 2.4Gbps Bluetooth 5.2	None	None
USB Ports	1x USB 3.0 Type-A 2x USB 2.0 Type-A	3x USB 3.0 Type-A 1x USB 3.0 Type-C	1x USB 3.1 Type-A 2x USB 3.0 Type-A 1x USB 2.0 Type-C	2x USB 3.0 Type-A 2x USB 3.1 Type-C	4x USB 3.0 Type-A
Video	HDMI: Up to 1080P MIPI-DSI: Up to 1080P	HDMI: Up to 4K DP(via USB-C):Up to 4K eDP: Up to 1080P	HDMI, Up to 4K HDR DP(via USB-C), Up to 4K HDR eDP. Up to 1080P	HDMI,Up to 4K DP(via USB-C), Up to 4K	HDMI, Up to 4K DP:Up to 4K eDP: Up to 1080P
M.2 Sockets	None	M.2 Key E: Suppot WiFi/BT Module M.2 Key M: Support NVME SSD	M.2 Key B: Support 4G module,5G module, SATA SSD M.2 Key M: Support NVME SSD	M.2 Key E: Support WiFi/BT Module M.2 Key B: Support SATA SSD M.2 Key M: Support NVME SSD	M.2 Key E: Support WiFi/BT Module M.2 Key M: Support NVME SSD
Operating System	Windows 10 Linux	Windows 10 Linux	Windows 10, Windows 11 Linux	Windows 10 Linux	Windows 10 Linux
Dimension	88mm*70mm*22mm	115mm*78mm*14mm	125mm*78mm*16mm	120mm*120mm*50mm	120mm*122mm*30mm
Price (with onboard storage)	Start from \$99	Start from \$208	coming soon	Start from \$365	Start from \$529



# Customer Group



- Young maker group and software developers.
- Mostly applied to instruments and apparatus, telecommunications, or other design and solution companies.
- Due to the universality of Windows and no need of skilled software development capabilities, more and more ordinary users also know about SBCs and LattePanda.
- More and more industry users have also noticed our products and started to explore new application scenarios in various industries.

# Applications Scenario

LattePanda can be widely used in artificial intelligence, Internet of Things, smart city, edge computing, smart home, face detection and recognition, artificial intelligence server, intelligent monitoring, voice recognition, cloud machine learning and other fields.



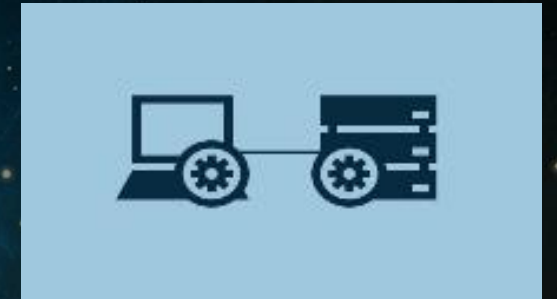
**Automotive Electronics/  
Central Control Platform**



**Education**



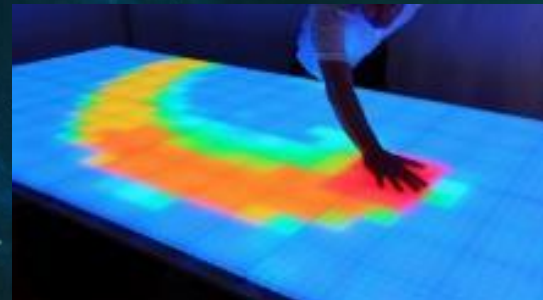
**Computer Science**



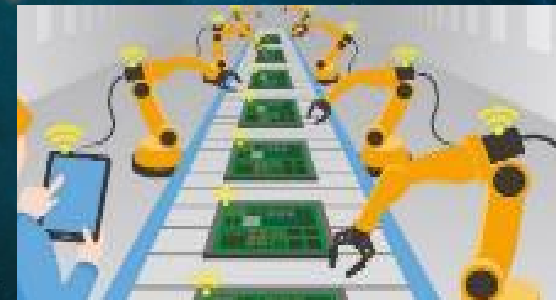
**IoT Nodes, Smart Gateways,  
local Servers, NAS**



**Entertainment Device**



**Interactive Arts**



**Industrial Robot Control  
and Embedded System**



**Service Robot**



# Maker Projects

## Portable Mini PC



DIY POWERFUL MINI COMPUTER



Small and compact pocket PC, can install windows operating system, various kinds of software and games, all according to personal preferences. It is not only suitable for office and SOHO, but also convenient to carry for business trip or travel.

## Gaming Console



Build a portable Emulation / Gaming Handheld using the LattePanda and accessories like the Tian Case and EDP Touch Screen Display.



# Industrial Application



## Gas/Charging Station Self-service Equipment

It's a kind of sale terminal for fuel stations, which was designed by one of our customers. we can use it for self-service payment and refuelling the car.



## Digital Factory

With the trend of developing intelligent factories, the demand for data visualization is increasing day by day. Production line data reports require more immediacy and readability.



## Service Robot

The development of service robots makes it easier for businesses to provide customized services to meet customer needs.



## Amusement Machine

- There is a huge demand for equipment in places like casinos and amusement machine rooms.
- Has good cost performance under the premise of stable operation.



# Industrial Application



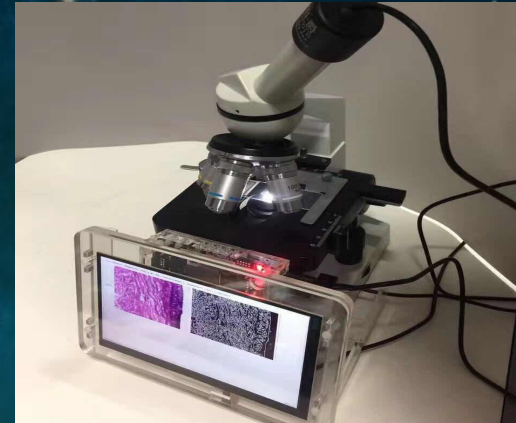
**POS Machine**

Can be widely used in shopping malls, retail stores and other places.



**Stage Light Tracking System**

Stage tracking systems have improved performances in the traditional entertainment and audiovisual industries.



**Intelligent Scientific Instrument**

Automatic processing of instrumental results such as cell quantity statistics.



**Automobile Center Console System**

The upgrade of Automobile Center Console system, rich software ecology and expansibility.