

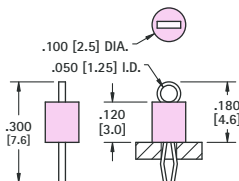
(THM) THRU HOLE MOUNT TEST POINTS - COLOR KEYED

- Color keyed for visibility and quick identification
- Economical choice for PC test point terminations
- Snap-fit mounting provides positive retention for wave soldering
- Wire form loop for safe, non-slip testing
- Space saving, ultra low and low profile designs
- High profile design for difficult to reach applications
- Suitable for high density packaging on .062 (1.57) and .093 (2.36) PC boards
- Practical replacement for wire-wrap posts and turrets
- Secure grip for J hooks, EZ hooks, grabbers, alligator clips, tips or probes
- High temperature nylon base ideal for reflow soldering
- Ideal for reliable production testing and field service troubleshooting



COLOR KEYED

MINIATURE



SPECIFICATIONS

Terminal:

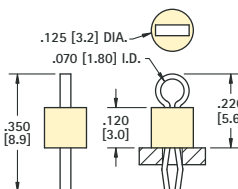
.010 (.25) x .020 (.51) Phosphor Bronze, Silver Plate

Base: Nylon 46, UL Rated 94V-0

Mtg. Hole: .040 (1.0) Diameter

CAT. NO.	BASE COLOR	CAT. NO.	BASE COLOR
5000	RED	5115	BROWN
5001	BLACK	5116	GREEN
5002	WHITE	5117	BLUE
5003	ORANGE	5118	GREY
5004	YELLOW	5119	PURPLE

COMPACT



SPECIFICATIONS

Terminal:

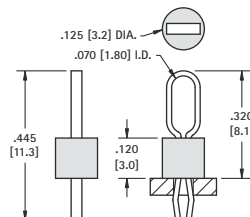
.015 (.38) x .032 (.81) Phosphor Bronze, Silver Plate

Base: Nylon 46, UL Rated 94V-0

Mtg. Hole: .063 (1.6) Diameter

CAT. NO.	BASE COLOR	CAT. NO.	BASE COLOR
5005	RED	5120	BROWN
5006	BLACK	5121	GREEN
5007	WHITE	5122	BLUE
5008	ORANGE	5123	GREY
5009	YELLOW	5124	PURPLE

MULTIPURPOSE



SPECIFICATIONS

Terminal:

.015 (.38) x .032 (.81) Phosphor Bronze, Silver Plate

Base: Nylon 46, UL Rated 94V-0

Mtg. Hole: .063 (1.6) Diameter

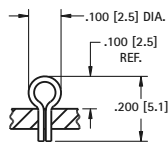
CAT. NO.	BASE COLOR	CAT. NO.	BASE COLOR
5010	RED	5125	BROWN
5011	BLACK	5126	GREEN
5012	WHITE	5127	BLUE
5013	ORANGE	5128	GREY
5014	YELLOW	5129	PURPLE

ULTRA LOW PROFILE

MATERIAL: .017 (.43) Dia. Phosphor Bronze Silver Plate
Mtg Hole: .040 (1.0)

CAT. NO. 5021

SHOWN AS
INSTALLED INTO
.040 [1.02] DIA.
MOUNTING HOLE

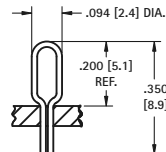


LOW PROFILE

MATERIAL: .016 (.40) x .028 (.71) Phosphor Bronze Silver Plate
Mtg Hole: .040 (1.0)

CAT. NO. 5020

SHOWN AS
INSTALLED INTO
.040 [1.02] DIA.
MOUNTING HOLE

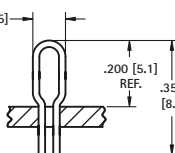


STANDARD

MATERIAL: .020 (.50) Dia. Phosphor Bronze Silver Plate
Mtg Hole: .073 (1.9)

CAT. NO. 5023

SHOWN AS
INSTALLED INTO
.067 [1.70] TO .078 [1.98] DIA.
MOUNTING HOLE

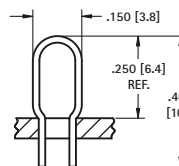


LARGE

MATERIAL: .020 (.50) Dia. Phosphor Bronze Silver Plate
Mtg Hole: .114 (2.9)

CAT. NO. 5024

SHOWN AS
INSTALLED INTO
.112 [2.84] TO .116 [2.95] DIA.
MOUNTING HOLE



ALLIGATOR CLIPS

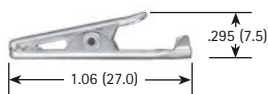


- Solder connection with strain relief • Insulated or non-insulated
- Large clip also accepts standard banana plug

MATERIAL: Clip: Steel, Nickel Plate; Insulator: Vinyl



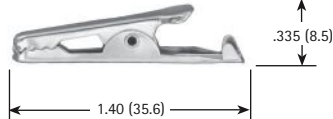
SMALL CLIP



CAT. NO.	INSULATOR COLOR
5033	NONE
5034	RED
5035	BLACK
5036	GREEN
5037	YELLOW

JAW SPREAD
.236 (6.0) max.

MEDIUM CLIP



CAT. NO.	INSULATOR COLOR
5038	NONE
5039	RED
5040	BLACK

JAW SPREAD
.236 (6.0) max.

LARGE CLIP



CAT. NO.	INSULATOR COLOR
5044	NONE
5045	RED
5046	BLACK
5048*	NONE

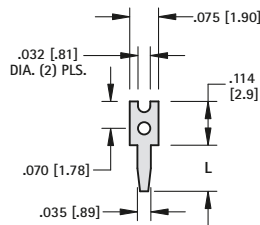
JAW SPREAD
.315 (8.0) max.

*with screw



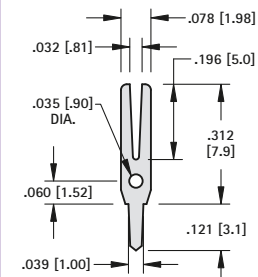
- Low profile, space saving designs for dense packaging
- Wide variety of configurations to suit most applications
- Safe, practical, economical replacement for wire-wrap posts
- Easy mount design, ideal for wave soldering
- Re-fit PC boards without need for re-design
- Provides easy access for production testing and field service troubleshooting
- Positive grip when using J hooks, EZ hooks, grabbers, clips, tips and probes
- Custom test point terminals can be manufactured to your specifications
- Other platings and materials available upon request

MATERIAL: Brass, Tin Plate



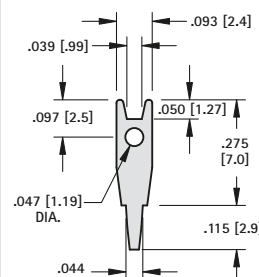
MATERIAL: .025 (.64) Brass

CAT. NO.	L
1030	.120 (3.0)
1031	.156 (4.0)



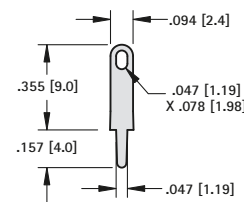
MATERIAL: .016 (.41) Brass

CAT. NO. 1037



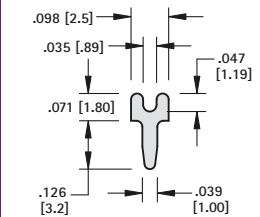
MATERIAL: .025 (.64) Brass

CAT. NO. 1036



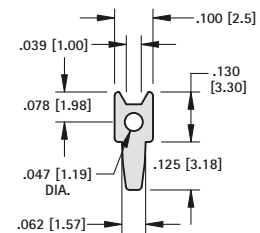
MATERIAL: .020 (.51) Brass

CAT. NO. 4953



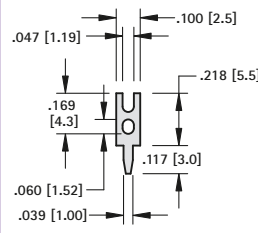
MATERIAL: .025 (.64) Brass

CAT. NO. 4950



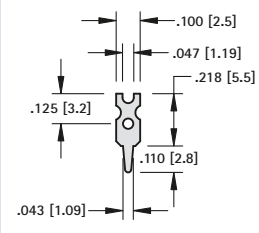
MATERIAL: .024 (.61) Brass

CAT. NO. 1032



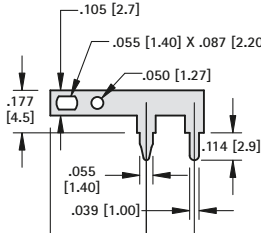
MATERIAL: .020 (.51) Brass

CAT. NO. 1035



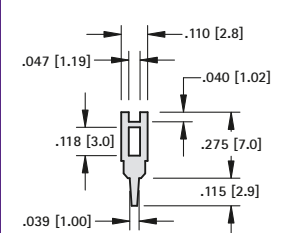
MATERIAL: .025 (.64) Brass

CAT. NO. 1034



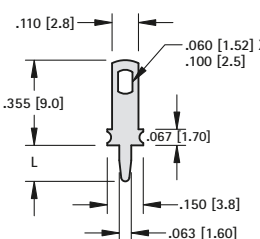
MATERIAL: .025 (.64) Brass

CAT. NO. 1045



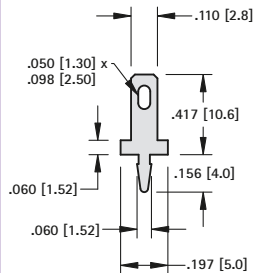
MATERIAL: .025 (.64) Brass

CAT. NO. 1040



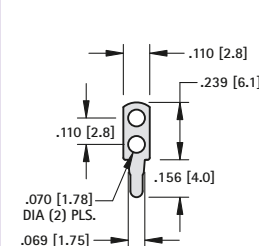
MATERIAL: .032 (.81) Brass

CAT. NO.	L
1041	.275 (7.0)
1046	.150 (3.8)



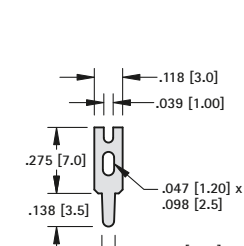
MATERIAL: .020 (.51) Brass

CAT. NO. 1250



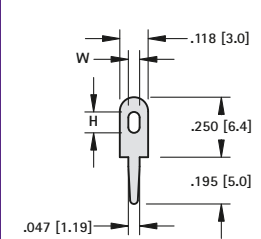
MATERIAL: .020 (.51) Brass

CAT. NO. 1038



MATERIAL: .025 (.64) Brass

CAT. NO. 4951

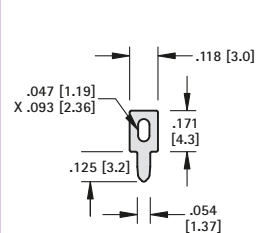


MATERIAL: .025 (.64) Brass

CAT. NO.	W	H
1249	.047 (1.19)	.087 (2.21)
4952	.063 (1.60)	.098 (2.49)

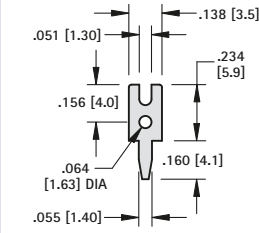
CUSTOM TERMINALS

Custom terminals can be machined to your exact specifications. Standard and special terminals can be staked onto special boards. Please email/fax your design to our Engineering Department.



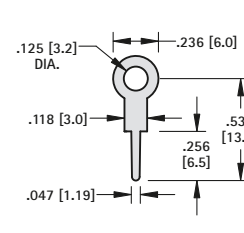
MATERIAL: .025 (.64) Brass

CAT. NO. 1033



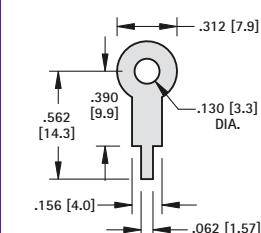
MATERIAL: .025 (.64) Brass

CAT. NO. 1039



MATERIAL: .020 (.51) Brass

CAT. NO. 4954



MATERIAL: .015 (.38) Brass

CAT. NO. 680