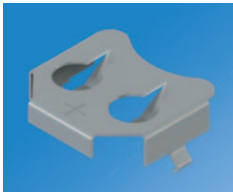




THRU HOLE (THM) COIN CELL RETAINERS



- Snap-In legs maintain relative positioning prior and during soldering
- Compatible with wave soldering processes
- Thru hole solder legs provides excellent mechanical strength
- Lowest profile mounting as compared to coin cell holders
- Economical design allows for PCB pads to be used as negative contacts
- Tin Nickel plating provides low contact resistance and will hold up to high temperature lead free soldering
- Battery can be easily replaced without any tools
- Operating Temperature: -50°F to 265°F (-45°C to 130°C)

MATERIAL: .010 (.25) Phosphor Bronze, Tin-Nickel Plate

Mounting Detail

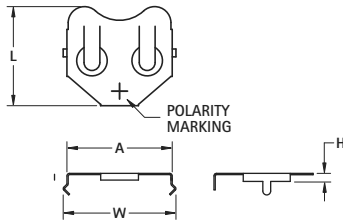
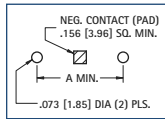


FIG. 1 - Compact

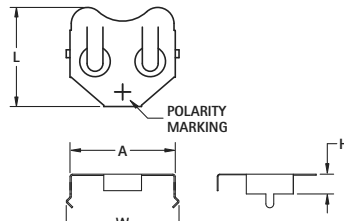
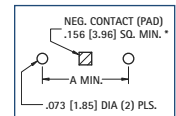


FIG. 2 - Low Profile

Mounting Detail



*Negative pad can be replaced with THM negative contact. See page 12.

CAT. NO.	FIG.	A	H	L	W	CELL DIA.	BATTERY REFERENCE
2997	2	.520 (13.2)	.235 (6.0)	.475 (12.1)	.585 (14.9)	11.6mm	SR43, 186, 386, A76, LR44, 357, MS76, PX76A, G-13, 303, V313
3001	2	.520 (13.2)	.118 (3.0)	.475 (12.1)	.585 (14.9)	12mm	CR1216, BR1220, CL1225, SR1120, D381, 391, 191
3013	2	.664 (16.9)	.156 (4.0)	.594 (15.1)	.723 (18.4)	16mm	BR1616, CR1612, CR1616, CR1620, CR1632
3027	1	.831 (21.1)	.085 (2.2)	.782 (19.9)	.890 (22.6)	20mm	BR2016, CR2016, DL2016
3003	2	.831 (21.1)	.156 (4.0)	.782 (19.9)	.890 (22.6)	20mm	BR2020, CR2020, CR2025, DL2025, CR2032
3005	2	.939 (23.9)	.156 (4.0)	.832 (21.1)	1.004 (25.5)	23mm	BR2320, CL2330, CR2320, BR2325, CR2325, DL2325
3011	2	.939 (23.9)	.240 (6.1)	.819 (20.8)	1.004 (25.5)	23mm	CR2354, DL2354
3007	1	1.000 (25.4)	.156 (4.0)	.918 (23.3)	1.055 (26.8)	24mm	CR2430, DL2430
3009	2	1.000 (25.4)	.230 (5.8)	.890 (22.6)	1.059 (26.9)	24mm	CR2450, DL2450
3039	2	1.000 (25.4)	.336 (8.5)	.890 (22.6)	1.059 (26.9)	24mm	CR2477, DL2477
3047	2	1.227 (31.2)	.167 (4.2)	1.020 (25.9)	1.340 (34.0)	30mm	CR3032

THRU HOLE (THM) ULTRA LOW PROFILE COIN CELL RETAINER

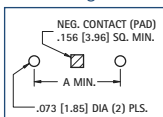


The Ultra Low Profile Coin Cell retainers are designed specifically for the most popular 20mm & 24mm coin cells. It will provide reliable contact as well as retain the coin cell with the minimum space needed. Ideal for small applications such as remote controls or active RFID tags.

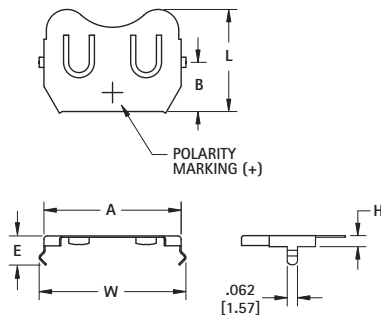
- Slim design - saves valuable board space
- Narrow face allows for quick and easy battery replacement
- Designed for specific batteries - lowest height design
- Operating Temperature: -50°F to 265°F (-45°C to 130°C)

MATERIAL: .010 (.25) Phosphor Bronze, Tin-Nickel Plate

Mounting Detail



THM Negative contact not recommended for Ultra Low Profile Retainers



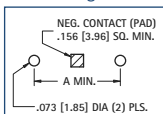
CAT. NO.	A	H	L	W	CELL DIA.	BATTERY REFERENCE
3029	.831 (21.1)	.067 (1.7)	.618 (15.7)	.890 (22.6)	20mm	CR2012, DL2012
3035*	.835 (21.2)	.170 (4.3)	.600 (15.2)	.880 (22.3)	20mm	CR2032, CR2025, CR2020
3033	1.000 (25.4)	.067 (1.7)	.681 (17.3)	1.055 (26.8)	24mm	CR2412, BR2412

* Nickel Plate

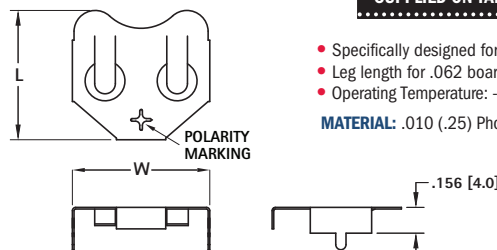
PIN AND PASTE COIN CELL RETAINERS



Mounting Detail



THM Negative contact not recommended for Ultra Low Profile Retainers



- Specifically designed for pin & paste applications
- Leg length for .062 boards
- Operating Temperature: -50°F to 265°F (-45°C to 130°C)

MATERIAL: .010 (.25) Phosphor Bronze, Tin-Nickel Plate

CAT. NO.	L	W	CELL DIA.	BATTERY REFERENCE	TAPE & REEL SPECS
3085	.594 (15.1)	.670 (17.0)	16mm	BR1616, CR1612, CR1616, CR1620, CR1632	36mm wide ; 24mm pitch; 500/reel
3083	.782 (19.9)	.831 (21.1)	20mm	BR2020, CR2020, CR2025, DL2025, CR2032	36mm wide ; 24mm pitch; 500/reel
3087	.918 (23.3)	1.00 (25.4)	24mm	CR2430, DL2430	44mm wide; 32mm pitch; 250/reel

