

Gecko-SL Cable Assemblies

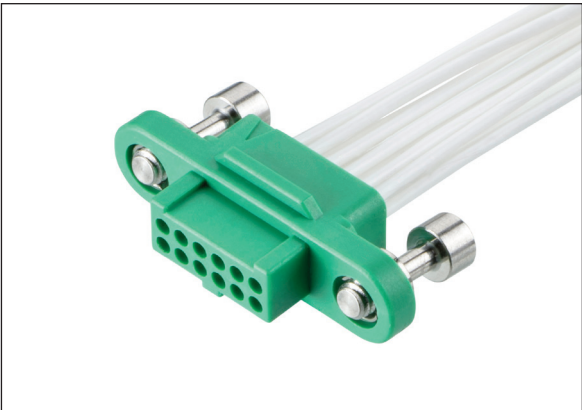
1.25mm pitch Screw-Lok Connectors

Secure & Robust Miniature Connectors, ready-to-use cables

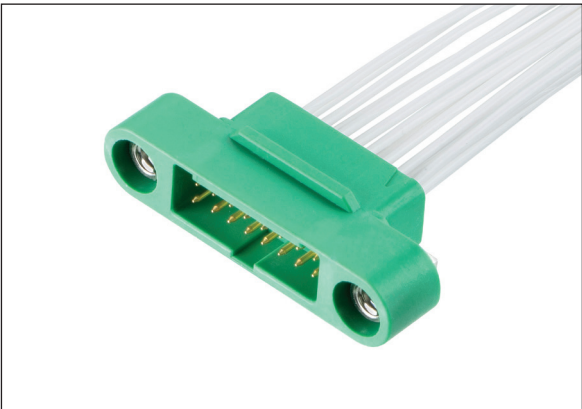
The existing Gecko-SL range combines the miniature yet powerful 1.25mm pitch connector system with the ease and strength of Screw-Lok (SL) jackscrew fixings. These screw-loks are made from stainless steel to ensure a strong and secure connection.

The range is now expanded to include a full range of ready-to-use Cable Assemblies. Versions include: male and female single-ended; male-to-male, male-to-female, female-to-male. Each double ended cable connects contact 1 to contact 1, contact 2 to contact 2, etc.

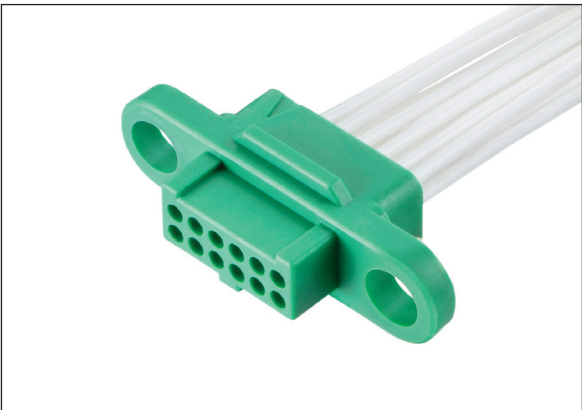
With a choice of pin counts and cable lengths, these readily-available cable assemblies provide a convenient and tested cable solution, without the additional requirements for tooling, training and testing necessary with in-house construction.



Female 12-contact with Screw-Loks



Male 16-contact cable assembly



Female 12-contact without Screw-Loks

Features and Benefits	
2A per contact (all electrically loaded; 2.8A per individual contact) at 1.25mm pitch	Excellent current capacity for a miniature connector, saving space and weight in critical applications
Compact design – significant space saving over Micro-D	Up to 45% smaller and up to 75% lighter over existing equivalent industry standards, ideal for avionics
150mm or 450mm (single-ended), 150mm or 300mm (double-ended)	Convenient ready-to-use cable lengths ideal for all uses from prototype and test to final production, stocked in depth
Secure Mate before Lock options	Faster and easier assembly both in-house and in the field, or without female screw-lok fitted for multiple mating operations.
Robust Design	Maintains electrical contact in extreme shock and vibration conditions
World-class quality from the Original Designers of Datamate	Published test reports, proven track record, high quality requirements through the complete production cycle

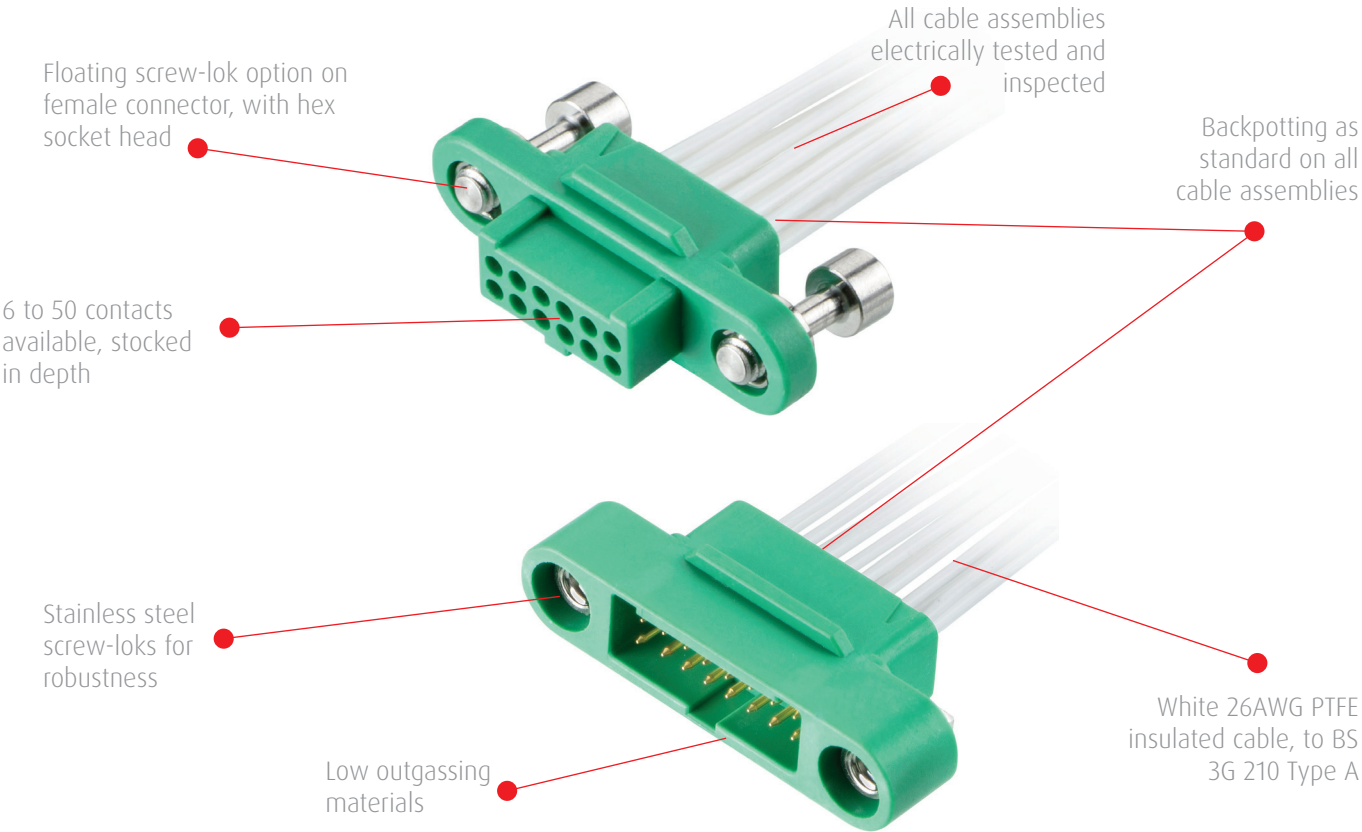
Key Applications	
Aviation	Avionic controls, guidance systems, UAVs, engine controls, radar and tracking
Motorsport & transport	Navigation, AI, GPS and tracking equipment, communications and telemetry, ERS controls
Space	Satellites & CubeSats, radar, communications, launch systems
Defense & Security	UAVs, UUV and other ROV, ground communications, handheld portable equipment, rugged vehicle electronics
High-End Industrial	Portable equipment, high vibration and robotics systems

Gecko-SL Cable Assemblies

1.25mm pitch Screw-Lok Connectors

Secure & Robust Miniature Connectors, ready-to-use cables

Product Features



Specifications

Electrical		Mechanical		Physical	
Current Rating	2A per contact	Number of Mating Cycles	1,000	Housing	Glass filled PA4T, UL94V-0
Voltage Rating	450V AC/DC	Temperature Range	-65°C to +150°C	Contacts	Copper alloy, Gold plating
Maximum Voltage	600V AC/DC	Insertion Force	2.8N max	Screw-loks	Stainless steel
Contact Resistance	25mΩ max	Withdrawal Force	0.2N min	Cable	White 26AWG PTFE to BS 3G 210 Type A
Insulation Resistance	1GΩ min	Vibration	20G, 6 hours total		

Gecko-SL Cable Assemblies

1.25mm pitch Screw-Lok Connectors

Secure & Robust Miniature Connectors, ready-to-use cables

How to Order

PCB Connectors

G125 - X XX XX 05 XX - XXXX XX

GENDER - FIRST END

F	Female
M	Male

CABLE SIZE

C1	26AWG
-----------	-------

TOTAL NO. OF CONTACTS

06, 10, 12, 16, 20, 26, 34, 50

FIXING - FIRST END

F0	No Screw-Lok (Female)
F1	Hex Socket Floating Screw-Lok (Female)
M1	Screw-Lok (Male)

TERMINATION - SECOND END

L	Loose cut end
F0	Female, No Screw-Lok
F1	Female, Hex Socket Floating Screw-Lok
M1	Male, Screw-Lok

CABLE LENGTH

0150	150mm
0300	300mm (double-ended)
0450	450mm (single-ended)

Note: Male-to-Female cables should be specified with the Male as the first end.

Additional Literature

Product Training Module >>