

NEW

New Product Information “G6RN-E”

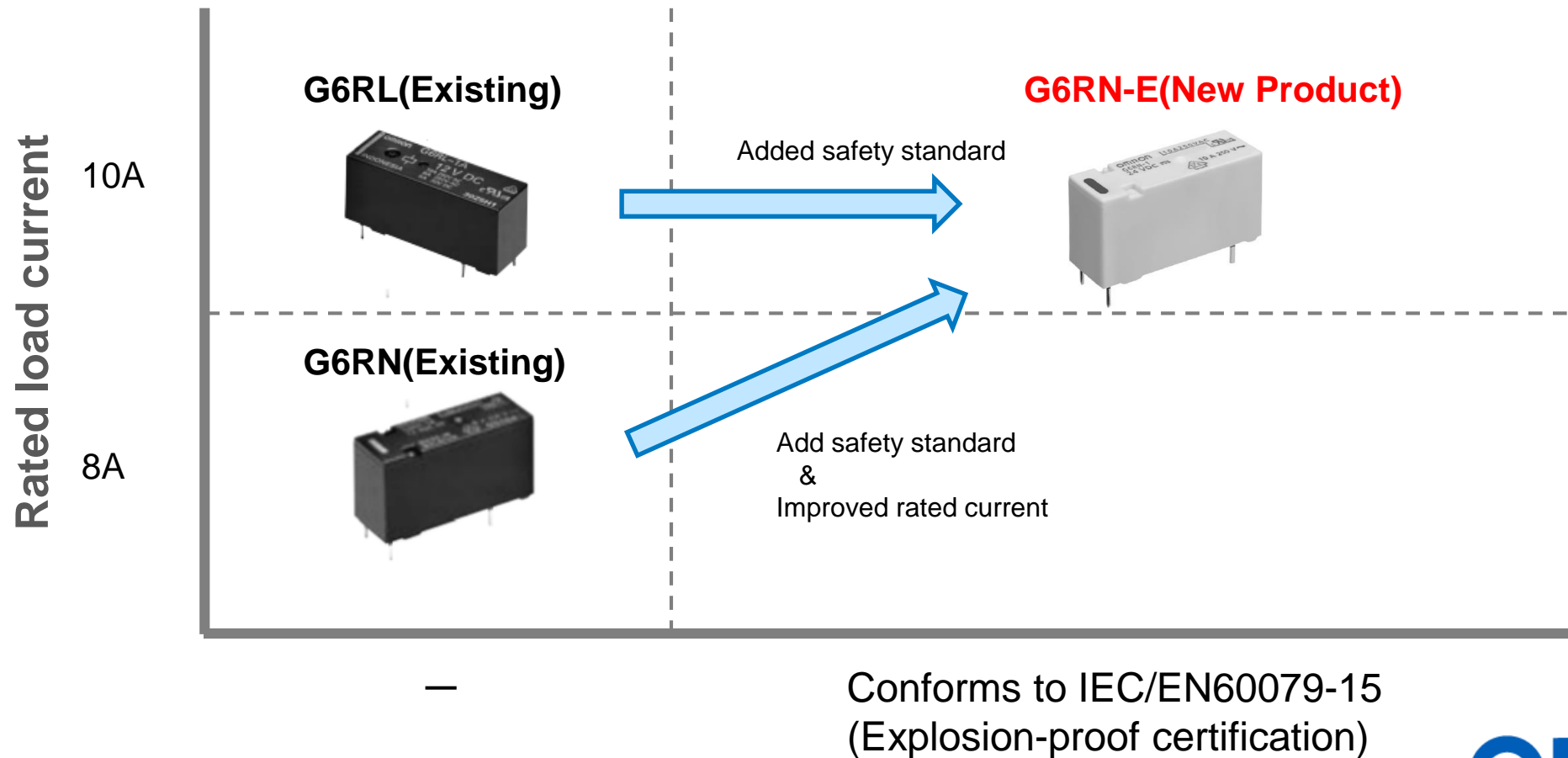
- 10A Current Load
- IEC/EN60079-15 (Explosion-proof)
- IEC/EN60335-1 (Household and similar electrical appliances)



OMRON

G6R Line Expansion

- Conforms to the safety standard, requested by building automation applications.
- G6RN standard rated load current is improved upon, meeting G6RL's 10A capability.



G6RN-E Proposal Value

1

Improved rated load current (From 8A to 10A)

Higher than existing product, and same as G6RL.

2

New safety certifications achieved

Conforms to the following standards:

-IEC/EN60079-15 (Explosion-proof)

-IEC/EN60335-1 (Household and similar electrical appliances)

3

High Dielectric Strength : 6,000VAC (Between Coil & Contact)

Improved upon the standard G6RN.

G6RN-E Main Spec



1a / 1c



1a / 1c

NEW!

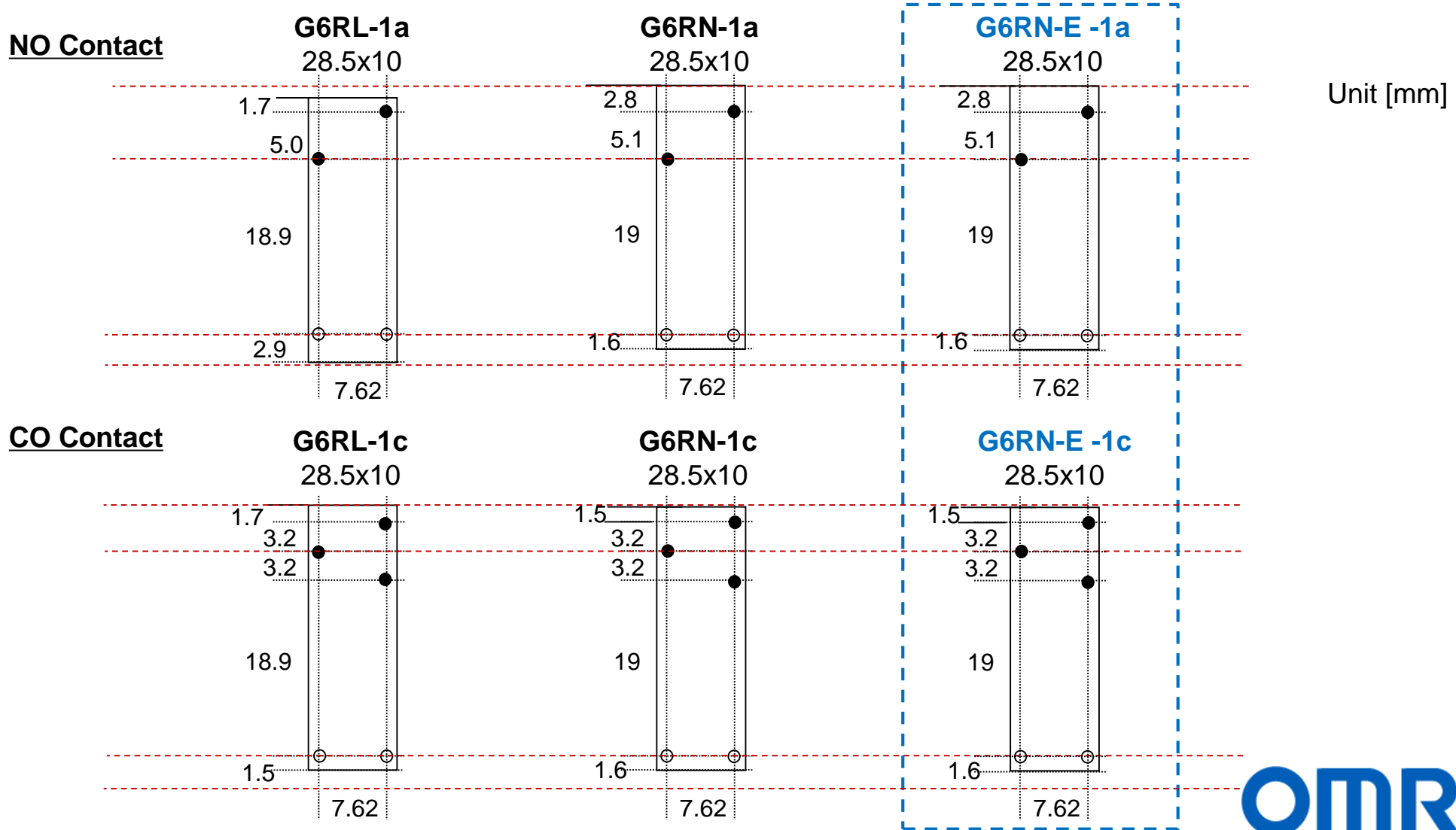


1a / 1c

Contact type		1a / 1c	1a / 1c	1a / 1c
Contact material		Ag alloy	Ag alloy + Gold plate	Ag alloy
Enclosure rating		Flux protection / Sealed	Sealed	Flux protection
Contact rating		AC250V 10A DC30V 5A	AC250V 8A DC30V 5A	AC250V 10A (NO) AC250V 8A(NC) DC30V 5A
Coil power		220-240mW	220-250mW	220-250mW
Insulation Distance	Between Coil/contact	Clearance: 10mm Creepage: 10mm	Clearance : 8mm Creepage : 8mm	Clearance: 8mm Creepage :8mm
Dielectric voltage	Between Coil/contact	AC5,000V for 1min	AC4,000V for 1min	AC6,000V for 1min
Electrical Durability	Flux protection	AC250V 10A 100k ops (NO/ASI) AC250V 8A 100k ops (ASI) DC30V 5A 50k ops (ASI) P1 load 250k ops	---	AC250V 10A 100k ops (NO) AC250V 8A 100k ops (NC) DC30V 5A 50k ops
	Fully sealed	AC250V 8A 50k ops (ASI) DC24V 5A 50k ops (ASI)	AC250V 8A 50k ops. DC30V 5A 50k ops.	---
Ambient temperature		-40°C~+85°C	-40°C~+85°C	-40~+85°C
Safety standard	IEC/EN60079-15	---	---	✓ compliant
	IEC/EN60335-1	---	✓ (-HA)	✓ compliant
Dimension (L x W x H)		L:28.5 x W:10.0 x H:12.3	L:28.5 x W:10.0 x H:15.0	L:28.5 x W:10.0 x H:15.0

G6R Line-Up Terminal Position Comparison

The terminal arrangement is the same as G6RL, position of the pin is almost same as G6RL.



G6RN-E Target Application

BA Applications & FA applications are the primary targets

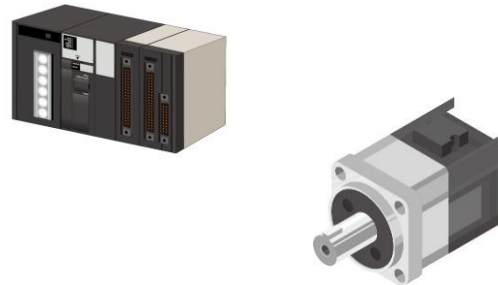
Building Automation

- Gas boiler
- HVAC
- **Heat Pump**



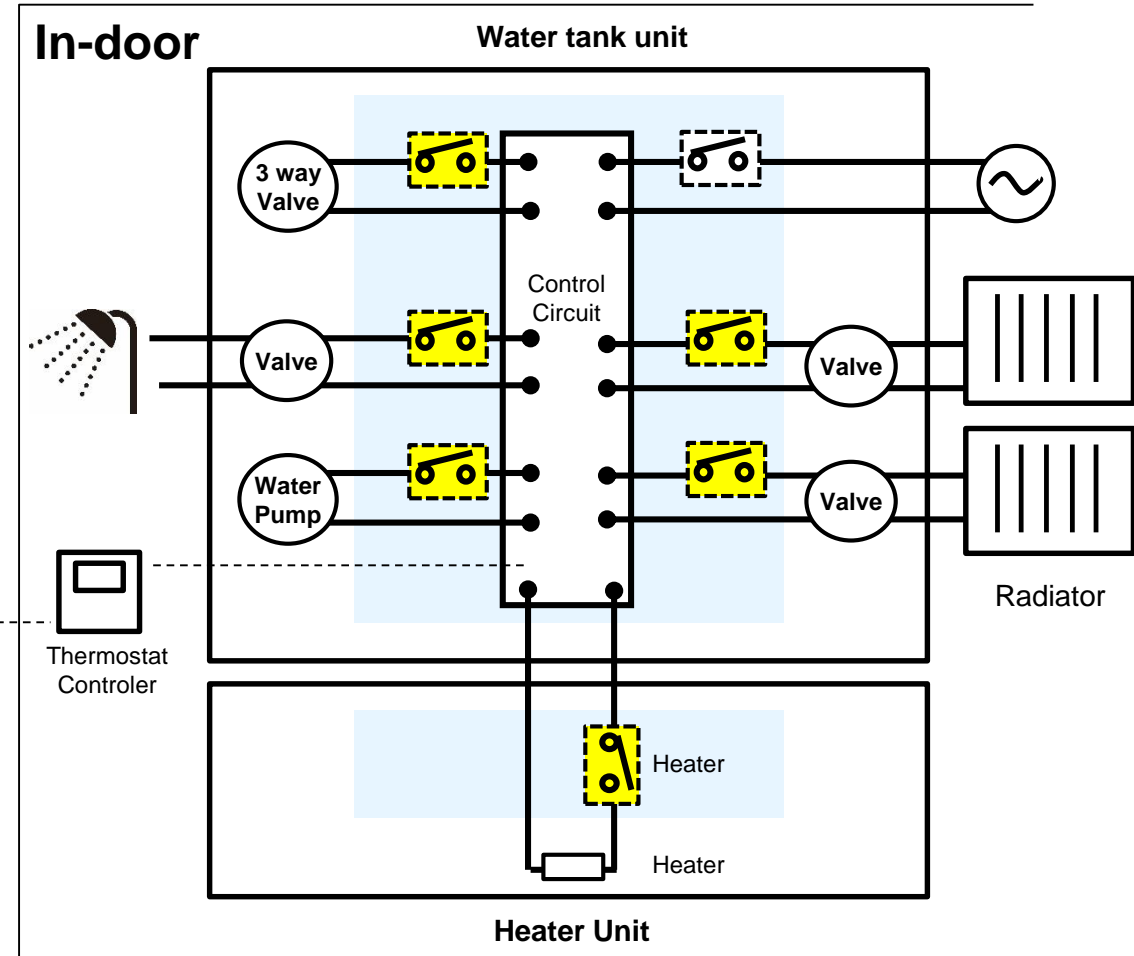
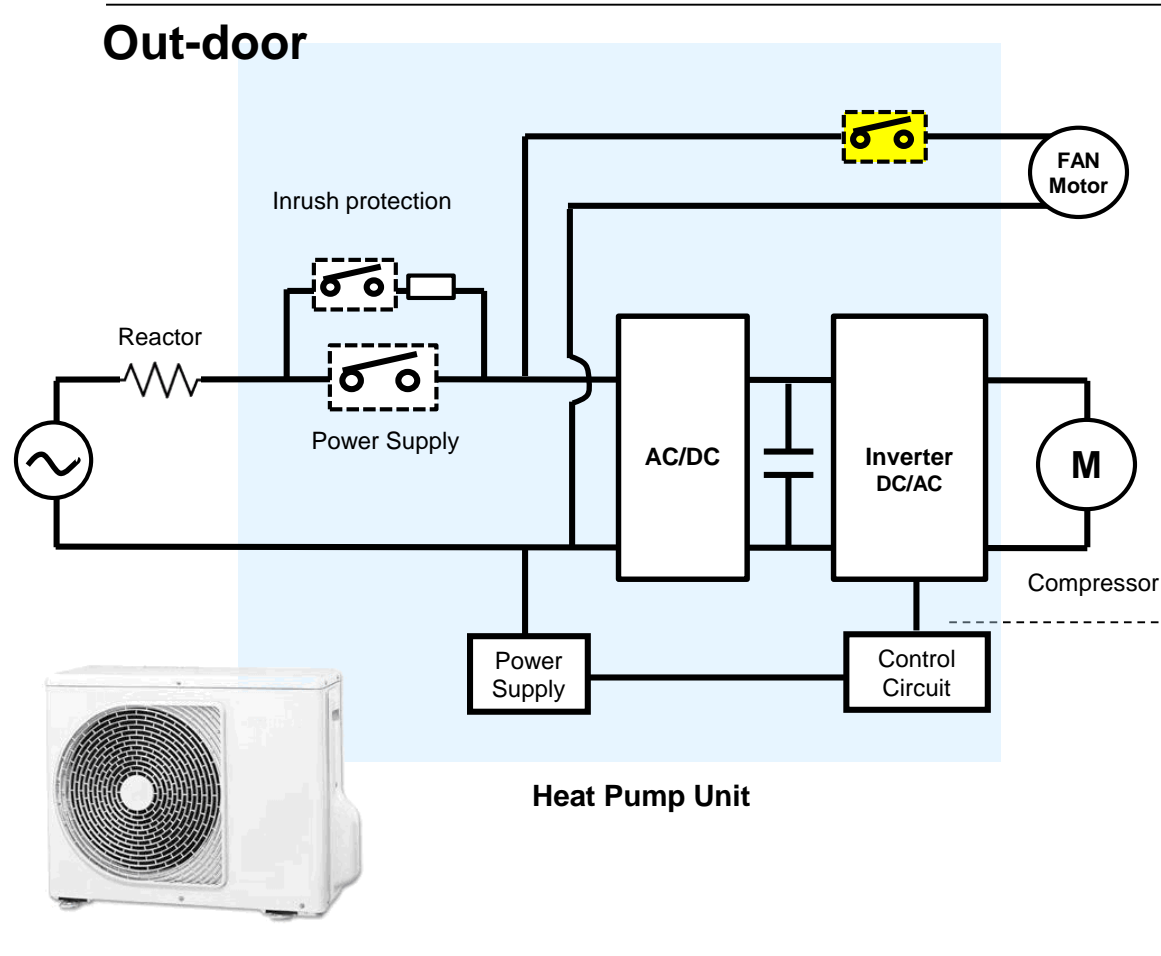
Factory Automation

- FA Controller
- Inverter
- Servo Amp



Usage of Target Application “Heat Pump”

- Outdoor - Fan motor control
- Indoor - Heater control, Valve control





Thank You