

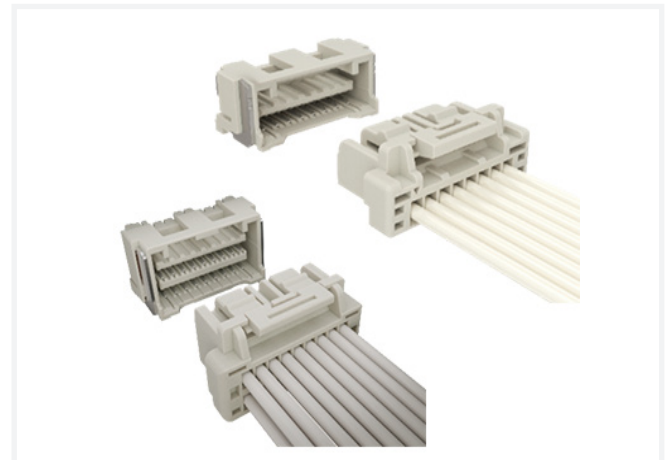
FitMate™ 1.5 mm

MODULAR AND FINE PITCH WIRE-TO-BOARD SOLUTION

Designed for fine pitch wire-to-board applications, Amphenol's FitMate™ 1.5 mm is the ideal solution for devices that require connectors with robust features and compact design.

With a wire gauge range from 26 AWG to 24 AWG, these connectors are available in single row, double row, vertical, right-angle, and SMT configurations.

- Saves space with a 1.5 mm pitch
- Current rating up to 2A
- Accommodates wire range from 26 AWG to 24 AWG



TARGET MARKETS



FEATURES

- Reinforced metal hold down
- Active latch lock
- Gold-plated version
- UL 94 V-0 flammability-rated material
- RoHS-compliant and lead-free

BENEFITS

- Secure PCB retention and solder joint strain relief
- Provides secure mating retention
- Offers higher reliability and durability
- High flammability rating
- Meets health and safety requirements

TECHNICAL INFORMATION

MATERIAL

- Header:
 - Housing: LCP, UL 94 V-0
 - Connector: Phosphor Bronze with Tin / 30 µin Gold
- Receptacle: High temperature plastic, UL 94 V-0
- Crimping Terminal: Phosphor Bronze

ELECTRICAL PERFORMANCE

- Insulation Resistance: 500 MΩ min.
- Voltage Rating: 100 VAC (RMS) / DC
- Contact Resistance: 20 mΩ max. (Initial)
- Current Rating: 2 A (Single Row) / 1.5 A (Double Row)

MECHANICAL PERFORMANCE

- Durability: 30 cycles
- Mating Force: Refer to product spec.
- Unmating Force: Refer to product spec.

ENVIRONMENTAL

- Operating Temperature Range: -40 °C to +105 °C

APPROVALS AND CERTIFICATIONS

- UL Approval: Pending

SPECIFICATIONS

- Product Specification: GS-12-1566
- Packaging Specification: Refer to package drawing

PACKAGING

- PCB Header: Tape/Reel
- Receptacle Housing: Bag
- Crimping Terminal: Reel

TARGET MARKETS/APPLICATIONS



Cooking Machine
Office Equipment
Test & Measurement
Point-of-Sale Terminal
Portable terminal



Smart Home Device
Vacuum Cleaner Robot

PART NUMBERS

Description	Part Numbers
FitMate™ 1.5 mm Right Angle Header SMT Single Row	10155053*
FitMate™ 1.5 mm Vertical Header SMT Single Row	10155054*
FitMate™ 1.5 mm Receptacle Single Row	10155056*
FitMate™ 1.5 mm Right Angle Header SMT Double Row	10167624*
FitMate™ 1.5 mm Vertical Header SMT Double Row	10166584*
FitMate™ 1.5 mm Receptacle Double Row	10166893*
FitMate™ 1.5 mm Crimping Terminal	10166892*

*Denotes base part number. Find part number details using the search box on www.amphenol-cs.com

WHERE INNOVATION CONNECTS

Scan to learn more ►

