

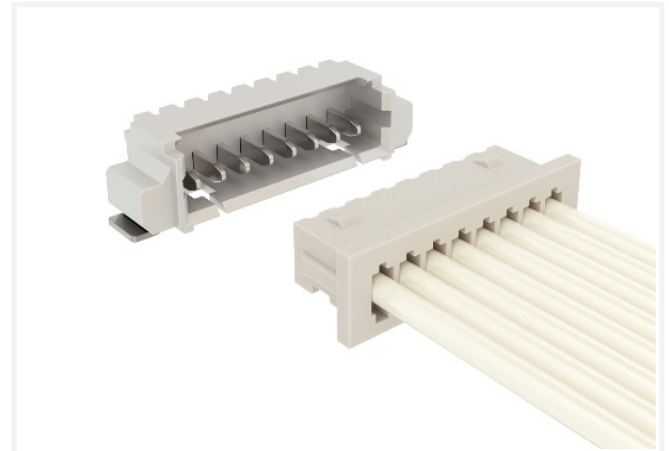
## FitMate™ 1.25 mm Single Row

### MODULAR AND FINE PITCH WIRE-TO-BOARD SOLUTION

Designed for fine pitch wire-to-board applications, Amphenol's FitMate™ 1.25mm is the ideal solution for devices that require compact connectors without sacrificing overall quality.

With a wire gauge range of 32 AWG to 28 AWG, these connectors are available in single-row, vertical/right-angle, and SMT/DIP configurations.

- Saves space with a 1.25 mm pitch
- Current rating up to 1 A
- Accommodates wire range from 32 AWG to 28 AWG



#### TARGET MARKETS



#### FEATURES

- 1.25 mm pitch wire-to-board solution
- Friction lock
- Gold-plated version
- UL 94 V-0 flammability-rated material
- RoHS-compliant and lead-free

#### BENEFITS

- Saves space with reduced PCB footprint
- Provides secure mating retention
- Offers higher reliability and durability
- High flammability rating
- Meets health and safety requirements

## TECHNICAL INFORMATION

### MATERIAL

- Header:
  - Housing: LCP, UL 94 V-0
  - Connector: Phosphor Bronze with Tin/Gold flash/30µin Gold
- Receptacle: PA66, UL 94 V-0
- Crimping Terminal: Phosphor Bronze

### ELECTRICAL PERFORMANCE

- Insulation Resistance: 100 MΩ min.
- Voltage Rating: 125 VAC (RMS) / DC
- Contact Resistance: 20 mΩ max. (Initial)
- Current Rating: 1 A

### MECHANICAL PERFORMANCE

- Durability: 30 cycles
- Mating Force: Refer to product spec.
- Unmating Force: Refer to product spec.

### ENVIRONMENTAL

- Operating Temperature Range: -40 °C to +105 °C

### APPROVALS AND CERTIFICATIONS

- UL Approval: Pending

### SPECIFICATIONS

- Product Specification: GS-12-675
- Packaging Specification: Refer to package drawing

### PACKAGING

- PCB Header: Tape/Reel
- Receptacle Housing: Bag
- Crimping Terminal: Reel

### TARGET MARKETS/APPLICATIONS



Cooking Machine  
Office Equipment  
Test & Measurement  
Point-of-Sale Terminal  
Portable terminal



Smart Home Device  
Vacuum Cleaner Robot

## PART NUMBERS

Description	Part Numbers
FitMate™ 1.25 mm Right Angle Header SMT Single Row	10114830*
FitMate™ 1.25 mm Vertical Header SMT Single Row	10114828*
FitMate™ 1.25 mm Right Angle Header DIP Single Row	10114831*
FitMate™ 1.25 mm Vertical Header DIP Single Row	10114829*
FitMate™ 1.25 mm Receptacle Single Row	10114826*
FitMate™ 1.25 mm Crimping Terminal	10114827*

\*Denotes base part number. Find part number details using the search box on [www.amphenol-cs.com](http://www.amphenol-cs.com)

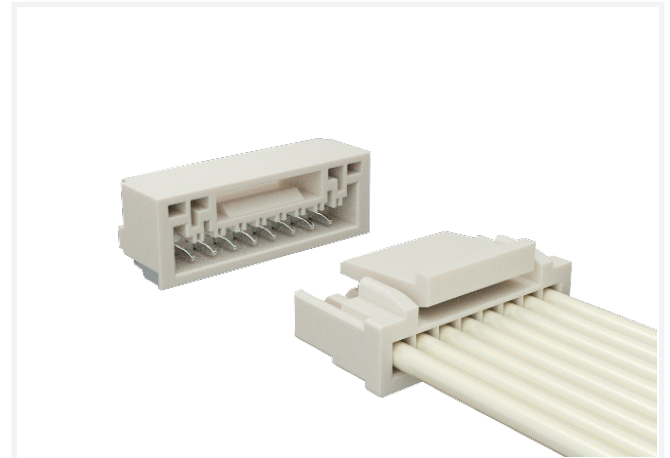
# FitMate™ 1.25 mm Single Row with Active Latch

## MODULAR AND FINE PITCH WIRE-TO-BOARD SOLUTION

Designed for fine pitch wire-to-board applications, Amphenol's FitMate™ 1.25mm is the ideal solution for devices that require compact connectors without sacrificing overall quality.

With a wire gauge range from 30 AWG to 26 AWG, these connectors are available in single-row, vertical/right-angle SMT configurations. These connectors come with an active latch to provide enhanced contact reliability.

- Saves space with a 1.25 mm pitch
- Current rating up to 1 A
- Accommodates wire range from 30 AWG-26 AWG



### TARGET MARKETS



### FEATURES

- 1.25 mm pitch wire-to-board solution
- Active latch lock
- Gold-plated version
- UL 94 V-0 flammability-rated material
- RoHS compliant and lead-free

### BENEFITS

- Saves space with reduced PCB footprint
- Provides higher secure mating retention
- Offers higher reliability and durability
- High flammability rating
- Meets health and safety requirements

## TECHNICAL INFORMATION

### MATERIAL

- Header:
  - Housing: LCP, UL 94 V-0
  - Connector: Phosphor Bronze with Tin/Gold flash
- Receptacle: PA66, UL 94 V-0
- Crimping Terminal: Phosphor Bronze

### ELECTRICAL PERFORMANCE

- Insulation Resistance: 100 M $\Omega$  min.
- Voltage Rating: 50 VAC (RMS) / DC
- Contact Resistance: 30 m $\Omega$  max. (Initial)
- Current Rating: 1 A

### MECHANICAL PERFORMANCE

- Durability: 50 cycles
- Mating Force: Refer to product spec.
- Unmating Force: Refer to product spec.

### ENVIRONMENTAL

- Operating Temperature Range: -40 °C to +105 °C

### APPROVALS AND CERTIFICATIONS

- UL Approval: Pending

### SPECIFICATIONS

- Product Specification: GS-12-1572
- Packaging Specification: Refer to package drawing

### PACKAGING

- PCB Header: Tape/Reel
- Receptacle Housing: Bag
- Crimping Terminal: Reel

### TARGET MARKETS/APPLICATIONS



Cooking Machine  
Office Equipment  
Test & Measurement  
Point-of-Sale Terminal  
Portable terminal



Smart Home Device  
Vacuum Cleaner Robot

## PART NUMBERS

Description	Part Numbers
FitMate™ 1.25 mm Right Angle Header SMT Single Row with Active Latch	10155242*
FitMate™ 1.25 mm Vertical Header SMT Single Row with Active Latch	10155243*
FitMate™ 1.25 mm Receptacle Single Row with Active Latch	10155244*
FitMate™ 1.25 mm Crimping Terminal Single Row with Active Latch	10155245*

\*Denotes base part number. Find part number details using the search box on [www.amphenol-cs.com](http://www.amphenol-cs.com)

## FitMate™ 1.25 mm Double Row with Active Latch

### MODULAR AND FINE PITCH WIRE-TO-BOARD SOLUTION

Designed for fine pitch wire-to-board applications, Amphenol's FitMate™ 1.25mm is the ideal solution for devices that require compact connectors without sacrificing overall quality.

With a wire gauge range from 32 AWG to 26 AWG, these connectors are available in double-row, vertical/right-angle SMT configurations. These connectors come with an active latch to provide enhanced contact reliability.

- Saves space with a 1.25 mm pitch
- Current rating up to 1 A
- Accommodates wire range from 32 AWG to 26 AWG



#### TARGET MARKETS



#### FEATURES

- 1.25 mm pitch wire-to-board solution
- Active latch lock
- Gold-plated version
- UL 94 V-0 flammability-rated material
- RoHS-compliant and lead-free

#### BENEFITS

- Saves space with reduced PCB footprint
- Provides higher secure mating retention
- Offers higher reliability and durability
- High flammability rating
- Meets health and safety requirements

## TECHNICAL INFORMATION

### MATERIAL

- Header:
  - Housing: LCP, UL 94 V-0
  - Connector: Phosphor Bronze with Tin/Gold flash
- Receptacle: PA66, UL 94 V-0
- Crimping Terminal: Phosphor Bronze

### ELECTRICAL PERFORMANCE

- Insulation Resistance: 100 MΩ min.
- Voltage Rating: 50 VAC (RMS) / DC
- Contact Resistance: 50 mΩ max. (Initial)
- Current Rating: 1 A

### MECHANICAL PERFORMANCE

- Durability: 50 cycles
- Mating Force: Refer to product spec.
- Unmating Force: Refer to product spec.

### ENVIRONMENTAL

- Operating Temperature Range: -20 °C to +85 °C

### APPROVALS AND CERTIFICATIONS

- UL Approval: Pending

### SPECIFICATIONS

- Product Specification: GS-12-1811
- Packaging Specification: Refer to package drawing

### PACKAGING

- PCB Header: Tape/Reel
- Receptacle Housing: Bag
- Crimping Terminal: Reel

### TARGET MARKETS/APPLICATIONS



Cooking Machine  
Office Equipment  
Test & Measurement  
Point-of-sale Terminal  
Portable terminal



Smart Home Device  
Vacuum Cleaner Robot

## PART NUMBERS

Description	Part Numbers
FitMate™ 1.25 mm Right Angle Header SMT Double Row with Active Latch	10169363*
FitMate™ 1.25 mm Vertical Header SMT Double Row with Active Latch	10169364*
FitMate™ 1.25 mm Receptacle Double Row with Active Latch	10169365*
FitMate™ 1.25 mm Crimping Terminal Double Row with Active Latch	10169366*

\*Denotes base part number. Find part number details using the search box on [www.amphenol-cs.com](http://www.amphenol-cs.com)

**WHERE INNOVATION CONNECTS**

Scan to learn more ►

