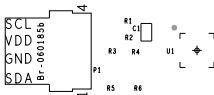
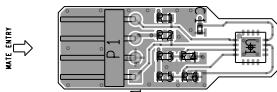


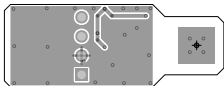
SILKSCREEN PRIMARY
08-060185-03
REV B



L1 PRIMARY
08-060185-01
REV B



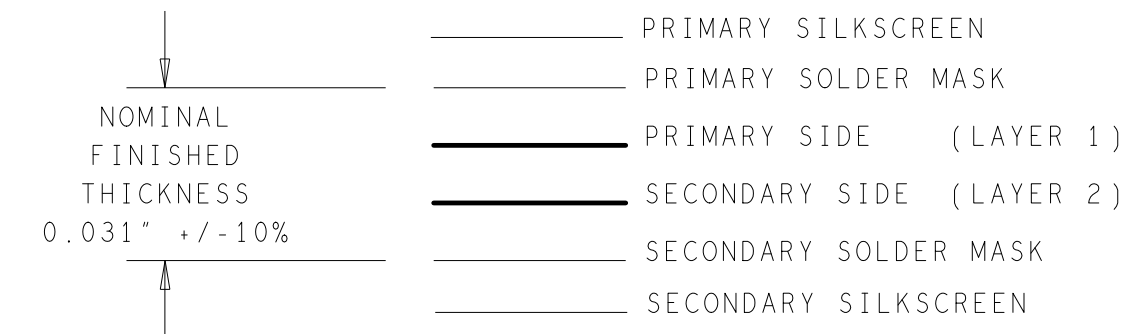
L2 SECONDARY
08-060185-02
REV B



8		7		6		5		4		3		2		1	
D	THIS DRAWING IS THE PROPERTY OF ANALOG DEVICES INC. IT IS NOT TO BE REPRODUCED OR COPIED, IN WHOLE OR IN PART, OR USED IN FURNISHING INFORMATION TO OTHERS, OR FOR ANY OTHER PURPOSE DETRIMENTAL TO THE INTERESTS OF ANALOG DEVICES. THE EQUIPMENT SHOWN HEREON MAY BE PROTECTED BY PATENTS OWNED OR CONTROLLED BY ANALOG DEVICES.					JUMPER TABLE			REVISIONS						
									REV	DESCRIPTION		DATE	APPROVED		
	RELAY CONTROL CHART					* SEE ASSEMBLY INSTRUCTIONS									
	CONTROL	CODE	DEVICE	FUNCTION	CONNECTOR										
	C														
B															
													A		
HARDWARE SERVICES -			HW TYPE : Customer Evaluation Product(s): ADT7422 : na PACKAGE : 0-lead N/A LFCSP-family : Pitch-pitch StyleVendor Style <User Define> <User Define> <User Define>												
HARDWARE SYSTEMS -															
TEST ENGINEER -															
COMPONENT ENGINEER -															
TEST PROCESS -															
HARDWARE RELEASE -															
DESIGNER -			MASTER PROJECT TEMPLATE TBD		TESTER TEMPLATE no_template		DRAWING NO. 02_060185		REV. A						
PTD ENGINEER B. Somers			UNLESS OTHERWISE SPECIFIED DIMENSIONS ARE IN INCHES												
CHECKER -			TOLERANCES		DECIMALS X.XX +0.010 X.XXX +0.005	FRACTIONS +1/32	ANGLES +2	SIZE D	SCALE 1:1	CODE ID NO. CodeID	SHEET 1	OF 2			
P.O SPEC.		BK/BD SPEC.	SOCKET OEM	OEM PART#	HANDLER										
8		7		6		5		4		3		2		1	

REVISIONS			
REV	DESCRIPTION	DATE	APPROVED
A	INITIAL RELEASE	08NOV19	B Somers

2 LAYER STACKUP



SPECIFICATIONS:

MATERIALS;	ALL LAMINATES AND BONDING MATERIALS SHOULD BE SELECTED FROM IPC-4101 OR IPC-4103, MINIMUM Tg>170degC, Td>300degC, U.L. RATING OF 94 V-0.
MATERIAL FAMILY;	FR406
CLADDING;	EXTERNAL LAYERS .5 OZ. COPPER, OVERPLATE TO 1.5 OZ.

NOTE: IF THE LAYER STACKUP CONFLICTS WITH THE ABOVE
CLADDING SPECIFICATIONS THEN THE LAYER STACKUP SHALL
TAKE PRECEDENCE.

SOLDER MASK; SHALL BE LIQUID PHOTOIMAGEABLE (LPI) APPLIED ON BOTH SIDES
OVER BARE COPPER OR GOLD AND SHALL MEET IPC-SM-840
(LATEST REV.) CLASS 3, COLOR BLUE.

SILK SCREEN; SHALL BE PERMANENT NON-CONDUCTIVE EPOXY INK, COLOR: WHITE
SYNTHETIC INKJET PRINTING ALLOWED FOR DENSE BOARDS,
COLOR: WHITE

SURFACE FINISH; 3) ENIG (Electroless Nickel/Immersion Gold)
100 MICRO INCHES NICKEL/
3-5 MICRO INCHES GOLD

INTENTIONAL SHORTS; IF SUPPLIED DATA INCLUDES A FILE "READ_ME.2", THEN
INTENTIONAL NET SHORTS EXIST. CUSTOMER REVIEW AND APPROVAL
IS REQUIRED IF SUPPLIED DATA REPORTS ANY CONDITION THAT
DOES NOT MATCH "READ_ME.2" FILE PROVIDED.

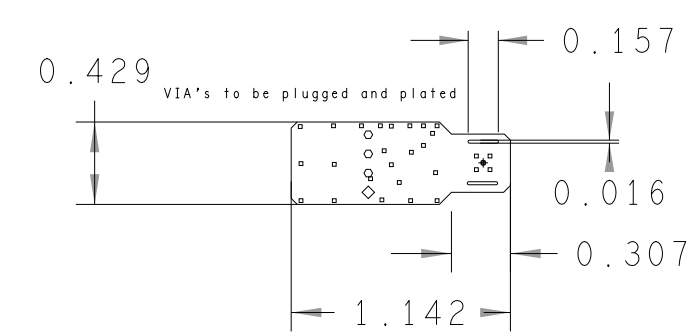
TEST REQUIREMENTS; 100% NETLIST ELECTRICAL VERIFICATION USING CUSTOMER
SUPPLIED IPC-D-356 NETLIST FOR OPENS AND SHORTS WHEN
'GERBER DATA' IS PROVIDED. THIS VERIFICATION ALSO
REQUIRED FOR 'ODB..' DATA PER EMBEDDED NETLIST.

REQUIREMENTS:

1. REFER TO IPC-6010 SERIES (LATEST REV.), CLASS 2 FOR FABRICATION UNLESS OTHERWISE SPECIFIED.
2. ACCEPTABILITY PER ANALOG DEVICES, INC. SPECIFICATION TST00115, (LATEST REVISION.)
3. MODIFICATIONS TO THE ARTWORK ARE NOT ALLOWED WITHOUT WRITTEN AUTHORIZATION.
4. HOLE PATTERN TOLERANCES FOR UNDIMENSIONED HOLES SHALL BE A DIAMETER OF .005 INCHES FROM THEIR TRUE POSITION.
5. PLATED HOLE WALL THICKNESS SHALL NOT BE LESS THAN .001 INCH MINIMUM AVERAGE, WITH NO READING LESS THAN .0008 BY CROSS SECTION.
6. HOLE DIAMETERS APPLY AFTER PLATING.
7. FINISHED CONDUCTOR WIDTHS SHALL NOT BE REDUCED FROM THE NOMINAL INDICATED ON THE MASTER PATTERN, BY MORE THAN THE CONDUCTOR THICKNESS.
8. MINIMUM DESIGN LINE WIDTH IS .012 INCH.
9. MINIMUM DESIGN SPACING IS .008 INCH.
10. NON-FUNCTIONAL PAD REMOVAL FROM INNER SIGNAL LAYERS MAY BE PERFORMED AFTER CUSTOMER APPROVAL.
11. IF PAD SIZES PROVIDED ARE NOT LARGE ENOUGH TO MAINTAIN ANNULAR RING REQUIREMENT, MFRG. MAY REQUEST APPROVAL TO TEAR DROP PADS TO MAINTAIN ANNULAR RING. (AT PAD TO TRACE INTERSECTION ONLY AND ELECTRICAL INTEGRITY MUST BE MAINTAINED.)
12. THIEVING MAY BE ADDED TO COMPENSATE FOR LOW COPPER DENSITY AREAS ON THIS DESIGN ONLY AFTER REVIEW AND APPROVAL FROM THE CUSTOMER:
 - A. THIEVING TO CARD EDGE, FIDUCIALS, NON-PLATED THROUGH HOLES, ALL OTHER FEATURES TO BE 0.200 INCH MINIMUM.
 - B. THERE SHALL BE NO THIEVING IN ANY AREAS FREE OF SOLDER MASK OR INTERNAL COPPER PLANES.
13. MFRG. TO LEGIBLY ETCH OR STAMP/SCREEN WITH PERMANENT NON-CONDUCTIVE INK ON SECONDARY SIDE IN A CLEAR AREA UNLESS OTHERWISE INDICATED;
 - A. U.L. CODE-FLAMMABILITY RATING
 - D. MFRG LOGO
 - B. DATE CODE (STAMP).
 - E. SUCCESSFUL ELECTRICAL TEST.
 - C. LOT NUMBER
14. REPAIRS PER IPC-7711/21 (LATEST REV.) ARE ALLOWED.

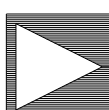
HOLE TOLERANCE

UNLESS SPECIFIED
PLATED: +/- 3 MILS
ALL VIA'S to be plugged and plated



DRILL CHART: TOP to BOTTOM			
ALL UNITS ARE IN MILLIMETERS			
FIGURE	FINISHED SIZE	PLATED	QTY
•	0.254	PLATED	28
◊	1.143	PLATED	1
◊	1.143	PLATED	3

PRIMARY SIDE

UNLESS OTHERWISE SPECIFIED DIMENSIONS ARE IN INCHES	APPROVAL		DATE		 <div>ANALOG DEVICES</div>	WWM DIVISION 804 WOBURN STREET WILMINGTON, MA 01887		
	TEMPLATE ENGINEER							
DECIMALS FRACTIONS ANGLES TOLERANCES .xx -.010 -.1/32 .0 .2 .xxx -.005 .xxx -.0050	HARDWARE SERVICES M. MADDEN HARDWARE SYSTEMS		Feb 2019		TITLE FABRICATION ADT7422 EVAL BOARD			
MATERIAL	TEST ENGINEER							
	COMPONENT ENGINEER B. SOMERS		Feb 2019					
	TEST PROCESS N/A		N/A					
	HARDWARE RELEASE							
FINISH	DESIGNER B. SOMERS PTD. ENGINEER		Feb 2019		SIZE	FSCM NO	DRAWING NUMBER	REV
	CHECKER N/A		N/A		D	24355	09-060185	B
DO NOT SCALE DWG					SCALE	1/1		SHEET 1 OF 1

TITLE: Bill of Materials

DATE: 11/13/2019
DESIGN: 02_060185a_top

ITEM#	Qty	WW_PN	DESCRIPTION	VALUE	JEDEC_TYP	TOL	VOLTAGE	WATTAGE	LOCATION	MFG	MFG_PN	HLM_STAT	STOCKROO	STOCKROO	STOCKROO	STOCKROO	STOCKROO	CUSTOM_F	DNI
1		08_060185	PCB	?	?	?	?	?	?	Analog Devices Supplied	08_060185a	N/A	?	?	?	?	?	?	?
2	1	E026461	CAP CER X7R, SOFT TERMINATION	0.1UF	C0402		10 50V	N/A	C1	TDK	C1005X7R1H104K050BE	REL	N/A	N/A	N/A	N/A	N/A	?	?
3	1	E035208	CONN-PCB 4POS HDR MALE	TSW-104-C	CNTHMHD	N/A	N/A	N/A	P1	SAMTEC INC.	TSW-104-08-G-S-RA	REL	N/A	N/A	N/A	N/A	N/A	?	?
4	2	E015180	RES THICK FILM CHIP	1K	R0603		1 N/A	1/4W	R1,R2	VISHAY	CRCW06031K00FKEAHP	REL	N/A	N/A	N/A	N/A	7006446	?	?
5	2	E007899	RES THICK FILM CHIP 0603	10K	R0603		1 N/A	1/16W	R3,R6	MULTICOMP (SPC)	MC0603WGF1002T5E-TC	REL	N/A	N/A	N/A	N/A	7005853	?	?
7	1	E026852	IC-ADI I2C TEMP SENSOR, PRELIM	ADT7422C	QFN16_4X	N/A	N/A	?	U1	ANALOG DEVICES	ADT7422CCPZ	RWC	N/A	N/A	N/A	N/A	N/A	?	?

Mechanical Parts

ITEM#	Qty	WW_PN	DESCRIPTION	VALUE	JEDEC_TYP	TOL	VOLTAGE	WATTAGE	LOCATION	MFG	MFG_PN	HLM_STAT	STOCKROO	STOCKROO	STOCKROO	STOCKROO	STOCKROO	CUSTOM_F	DNI
2	1	M034882	RIBBON CABLE FLAT SLIM BODY, 4POS, 7INCH	?	N/A	?	?	?	?	SAMTEC INC.	ID55-04-D-07.00-R	REL	N/A	N/A	N/A	N/A	N/A	?	?

The following components are part of the PCB or are NOT to be installed

ITEM#	Qty	WW_PN	DESCRIPTION	VALUE	JEDEC_TYP	TOL	VOLTAGE	WATTAGE	LOCATION	MFG	MFG_PN	HLM_STAT	STOCKROO	STOCKROO	STOCKROO	STOCKROO	STOCKROO	CUSTOM_F	DNI
6	2	E007899	RES THICK FILM CHIP 0603	10K	R0603		1 N/A	1/16W	R4,R5	MULTICOMP (SPC)	MC0603WGF1002T5E-TC	REL	N/A	N/A	N/A	N/A	7005853	?	DNI