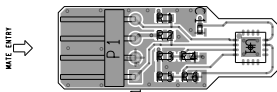
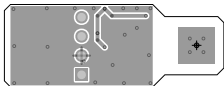
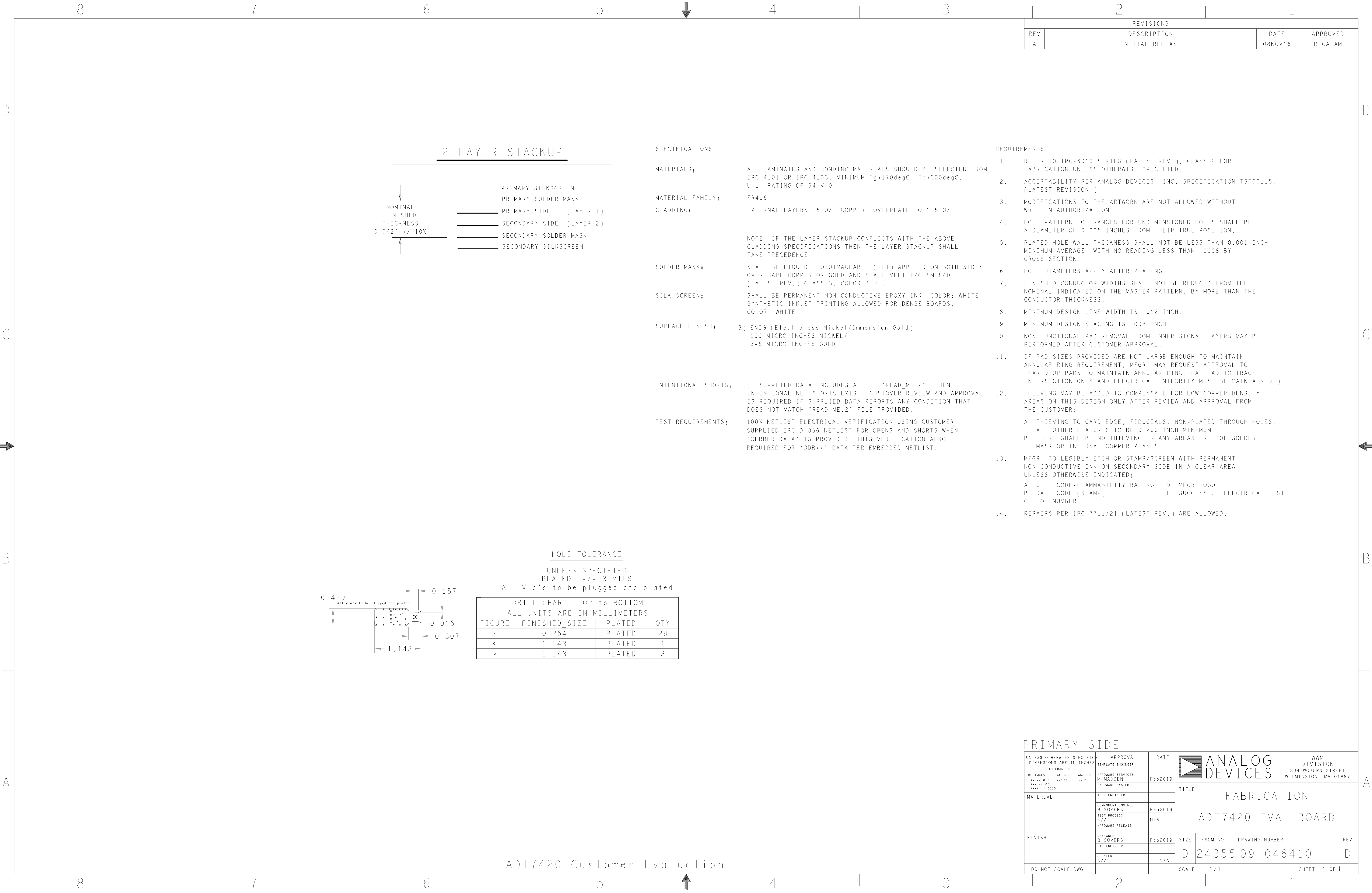


L1 PRIMARY
08-046410-01
REV D



L2 SECONDARY
08-046410-02
REV D





8		7		6		5		4		3		2		1																																																																																																																										
D	THIS DRAWING IS THE PROPERTY OF ANALOG DEVICES INC. IT IS NOT TO BE REPRODUCED OR COPIED, IN WHOLE OR IN PART, OR USED IN FURNISHING INFORMATION TO OTHERS, OR FOR ANY OTHER PURPOSE DETRIMENTAL TO THE INTERESTS OF ANALOG DEVICES. THE EQUIPMENT SHOWN HEREON MAY BE PROTECTED BY PATENTS OWNED OR CONTROLLED BY ANALOG DEVICES.					JUMPER TABLE			REVISIONS																																																																																																																															
									REV	DESCRIPTION		DATE	APPROVED																																																																																																																											
	CONTROL	CODE	DEVICE	FUNCTION	CONNECTOR	JP#	ON	OFF																																																																																																																																
	RELAY CONTROL CHART					1																																																																																																																																		
						2																																																																																																																																		
						3																																																																																																																																		
						4																																																																																																																																		
						5																																																																																																																																		
						* SEE ASSEMBLY INSTRUCTIONS																																																																																																																																		
C																																																																																																																																								
B																																																																																																																																								
A						<table><tr><td colspan="2">TEMPLATE ENGINEER</td><td>DATE</td><td colspan="2" rowspan="2">SCHEMATIC</td><td rowspan="2"></td></tr><tr><td colspan="2">-</td><td></td></tr><tr><td colspan="2">HARDWARE SERVICES</td><td></td><td colspan="2" rowspan="5">HW TYPE : Customer Evaluation Product(s): ADT7420 : ADT7422 PACKAGE : 16-lead 4X4X0.75 LFCSP-family : Pitch-pitch StyleVendor Style <User Define> <User Define> <User Define></td></tr><tr><td colspan="2">-</td><td></td></tr><tr><td colspan="2">HARDWARE SYSTEMS</td><td></td></tr><tr><td colspan="2">-</td><td></td></tr><tr><td colspan="2">TEST ENGINEER</td><td></td></tr><tr><td colspan="2">-</td><td></td></tr><tr><td colspan="2">COMPONENT ENGINEER</td><td></td></tr><tr><td colspan="2">-</td><td></td></tr><tr><td colspan="2">TEST PROCESS</td><td></td></tr><tr><td colspan="2">-</td><td></td></tr><tr><td colspan="2">HARDWARE RELEASE</td><td></td></tr><tr><td colspan="2">-</td><td></td></tr><tr><td colspan="2">DESIGNER</td><td></td><td colspan="2">MASTER PROJECT TEMPLATE</td><td colspan="2">TESTER TEMPLATE</td><td colspan="2" rowspan="2">DRAWING NO.</td><td colspan="2" rowspan="2">REV.</td></tr><tr><td colspan="2">-</td><td colspan="2">TBD</td><td colspan="2">no_template</td></tr><tr><td colspan="2">PTD ENGINEER</td><td></td><td colspan="4">UNLESS OTHERWISE SPECIFIED DIMENSIONS ARE IN INCHES</td><td colspan="2" rowspan="2">SIZE</td><td colspan="2" rowspan="2">SCALE</td><td colspan="2" rowspan="2">CODE ID NO.</td><td colspan="2" rowspan="2">SHEET 1</td><td colspan="2" rowspan="2">OF 2</td></tr><tr><td colspan="2">B. Somers</td></tr><tr><td colspan="2">CHECKER</td><td></td><td colspan="4">TOLERANCES</td><td colspan="2">DECIMALS</td><td colspan="2">FRACTIONS</td><td colspan="2">ANGLES</td></tr><tr><td colspan="2">-</td><td></td><td colspan="4"></td><td colspan="2">X.XX +0.010</td><td colspan="2">+1/32</td><td colspan="2">+2</td></tr><tr><td colspan="2">X.XXX +0.005</td><td></td><td colspan="4"></td><td colspan="2"></td><td colspan="2"></td><td colspan="2"></td></tr></table>									TEMPLATE ENGINEER		DATE	SCHEMATIC			-			HARDWARE SERVICES			HW TYPE : Customer Evaluation Product(s): ADT7420 : ADT7422 PACKAGE : 16-lead 4X4X0.75 LFCSP-family : Pitch-pitch StyleVendor Style <User Define> <User Define> <User Define>		-			HARDWARE SYSTEMS			-			TEST ENGINEER			-			COMPONENT ENGINEER			-			TEST PROCESS			-			HARDWARE RELEASE			-			DESIGNER			MASTER PROJECT TEMPLATE		TESTER TEMPLATE		DRAWING NO.		REV.		-		TBD		no_template		PTD ENGINEER			UNLESS OTHERWISE SPECIFIED DIMENSIONS ARE IN INCHES				SIZE		SCALE		CODE ID NO.		SHEET 1		OF 2		B. Somers		CHECKER			TOLERANCES				DECIMALS		FRACTIONS		ANGLES		-							X.XX +0.010		+1/32		+2		X.XXX +0.005												
	TEMPLATE ENGINEER		DATE	SCHEMATIC																																																																																																																																				
	-																																																																																																																																							
	HARDWARE SERVICES			HW TYPE : Customer Evaluation Product(s): ADT7420 : ADT7422 PACKAGE : 16-lead 4X4X0.75 LFCSP-family : Pitch-pitch StyleVendor Style <User Define> <User Define> <User Define>																																																																																																																																				
	-																																																																																																																																							
	HARDWARE SYSTEMS																																																																																																																																							
	-																																																																																																																																							
	TEST ENGINEER																																																																																																																																							
	-																																																																																																																																							
	COMPONENT ENGINEER																																																																																																																																							
-																																																																																																																																								
TEST PROCESS																																																																																																																																								
-																																																																																																																																								
HARDWARE RELEASE																																																																																																																																								
-																																																																																																																																								
DESIGNER			MASTER PROJECT TEMPLATE		TESTER TEMPLATE		DRAWING NO.		REV.																																																																																																																															
-		TBD		no_template																																																																																																																																				
PTD ENGINEER			UNLESS OTHERWISE SPECIFIED DIMENSIONS ARE IN INCHES				SIZE		SCALE		CODE ID NO.		SHEET 1		OF 2																																																																																																																									
B. Somers																																																																																																																																								
CHECKER			TOLERANCES				DECIMALS		FRACTIONS		ANGLES																																																																																																																													
-							X.XX +0.010		+1/32		+2																																																																																																																													
X.XXX +0.005																																																																																																																																								
P.O SPEC.	BK/BD SPEC.	SOCKET OEM	OEM PART#	HANDLER																																																																																																																																				
8	7	6	5	4	3	2	1																																																																																																																																	

TITLE: Bill of Materials

DATE: 03/22/2019
DESIGN: 02_046410b_top

ITEM	Qty	WW_PN	DESCRIPTION	VALUE	JEDEC_TYPE	TOL	VOLTAGE	WATTAGE	LOCATION	MFG	MFG_PN	HLM_STATUS	STOCKROOM_WL	STOCKROOM_GT	STOCKROOM_LK	STOCKROOM_GBO	STOCKROOM_NSH	CUSTOM_PART	DNI
1	1	08_046410b	PCB	?	?	?	?	?	?	Analog Devices Supplied	08_046410b	N/A	?	?	?	?	?	?	?
2	1	E026461	CAP CER X7R, SOFT TERMINATION	0.1UF	C0402		10 50V	N/A	C1	TDK	C1005X7R1H104K050BE	REL	N/A	N/A	N/A	N/A	N/A	?	?
3	1	E035208	CONN-PCB 4POS HDR MALE RA, 2.54MM PITCH, SOLDER TAIL 2.29MM	TSW-104-08-G-S-RA	CNTHMHDRA1X4L400W100H124	N/A	N/A	N/A	P1	SAMTEC INC.	TSW-104-08-G-S-RA	REL	N/A	N/A	N/A	N/A	N/A	?	?
4	2	E015180	RES THICK FILM CHIP	1K	R0603		1 N/A	1/4W	R1,R2	VISHAY	CRCW06031K00FKEAHP	REL	N/A	N/A	N/A	N/A	7006446	?	?
5	2	E007899	RES THICK FILM CHIP 0603	10K	R0603		1 N/A	1/16W	R3,R6	MULTICOMP (SPC)	MC0603WGF1002T5E-TC	REL	N/A	N/A	N/A	N/A	7005853	?	?
7	1	E013789	IC-ADI 16-BIT DIGITAL I2C TEMP SENSOR	ADT7420UCPZ-RL7	QFN16_4X4_PAD2_6X2_6	N/A	N/A	?	U1	ANALOG DEVICES	ADT7420UCPZ-RL7	REL	N/A	N/A	N/A	N/A	1004018	?	?

Mechanical Parts

ITEM	Qty	WW_PN	DESCRIPTION	VALUE	JEDEC_TYPE	TOL	VOLTAGE	WATTAGE	LOCATION	MFG	MFG_PN	HLM_STATUS	STOCKROOM_WL	STOCKROOM_GT	STOCKROOM_LK	STOCKROOM_GBO	STOCKROOM_NSH	CUSTOM_PART	DNI
2	1	M034882	RIBBON CABLE FLAT SLIM BODY, 4POS, 7INCH	?	N/A		?	?	?	SAMTEC INC.	IDSS-04-D-07.00-R	REL	N/A	N/A	N/A	N/A	N/A	?	?

The following components are part of the PCB or are NOT to be installed

ITEM	Qty	WW_PN	DESCRIPTION	VALUE	JEDEC_TYPE	TOL	VOLTAGE	WATTAGE	LOCATION	MFG	MFG_PN	HLM_STATUS	STOCKROOM_WL	STOCKROOM_GT	STOCKROOM_LK	STOCKROOM_GBO	STOCKROOM_NSH	CUSTOM_PART	DNI
6	2	E007899	RES THICK FILM CHIP 0603	10K	R0603		1 N/A	1/16W	R4,R5	MULTICOMP (SPC)	MC0603WGF1002T5E-TC	REL	N/A	N/A	N/A	N/A	7005853	?	DNI