



Edge-mount Brackets Installation Instruction Sheet

1. INTRODUCTION

The purpose of this instruction sheet is to detail procedures for installation of TE Connectivity Edge-mount Brackets, part numbers 2406230-1 and 2406490-1. The 2406230-1 bracket has been developed to provide mounting for cable diameters up to 15mm. The 2406490-1 bracket has been developed to provide mounting for cable diameters up to 30mm.

Description, Generic	TE Connectivity Part Numbers	TE Connectivity Drawing
Edge-mount Bracket (Small)	2406230-1	2406230
Edge-mount Bracket (Large)	2406490-1	2406490

Table 1

2. PRE-INSTALLATION REQUIREMENTS

2.1. Edge-mount Bracket Size Selection

The size of the Edge-mount Bracket shall be determined by the customer for the specific application. The 2406230-1 bracket is designed to provide mounting for cable diameters up to 15mm. The 2406490-1 bracket is designed to provide mounting for cable diameters up to 30mm. Note that mounting performance will need to be validated by the customer depending on the supported mass and operational accelerations subjected to the system.

2.2. Adhesive Selection

An adhesive capable of withstanding the mechanical and environmental requirements associated with the application and compatible with the mechanical and environmental requirements of the Edge-mount Bracket must be defined by the customer prior to installation.

2.3. Mounting Surfaces

A flat mounting surface capable of withstanding the mechanical and environmental requirements associated with the application and compatible with the mechanical and environmental requirements of the Edge-mount Bracket shall be engineered and provided by the customer.

For an optimal bond performance, the mounting surfaces may need to be prepared prior to application of adhesive. This typically includes removal of the surface layer by abrasion; however, the method may need to be adjusted depending on the adhesive selected. This process must be defined by the customer.

2.4. Mounting Locations

A locating tab on the bracket should be used to position the bracket against the edge of the element on which it is mounted. This ensures that a pre-defined spacing is maintained between the mounting element and mounted object; 6.9mm (nom.) for bracket 2406230-1 and 12.0mm (nom.) for bracket 2406490-1.

Mounting locations should be selected that provide sufficient access for cable tie insertion and installation. In addition, access for fixturing should be considered providing it is required to support the bracket during adhesive curing.

If required, brackets can be mounted in a back-to-back arrangement (see figure 1). This is possible for substrate thicknesses greater than 1mm.

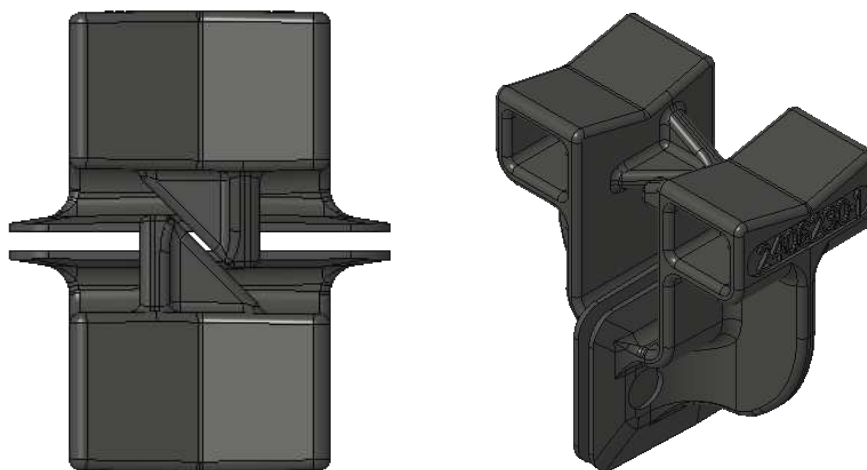


Figure 2 – Edge-mount bracket back-to-back configuration (P/N 2406230-1)

2.5. Edge-mount Bracket Environmental Considerations

TE Connectivity Edge-mount Brackets meet fungus resistance and flammability testing requirements as defined in the product specification 108-161190.

3. INSTALLATION TOOLS

- 3.1. No specific tools are required for mounting of the Edge-mount Bracket to a given mounting element. Note that, depending on the adhesive selected, fixturing may be required to support the bracket until the adhesive has cured sufficiently. If necessary, fixturing shall be engineered and provided by the customer.

4. INSTALLATION OF CABLES (OR SIMILAR OBJECTS) TO THE PRODUCT

- 4.1. Mounting of the Edge-mount Bracket prior to installation of a cable is recommended. The bracket shall be oriented to the longitudinal axis of the cable to be supported. At the discretion of the customer, a quality inspection may be performed following this installation operation.
- 4.2. Prior to installation of a cable to the bracket, and at the discretion of the customer, a cable tie can be inserted through the slot in preparation for cable mounting. Note that the cable should only be in contact with the two angled polished surfaces after tightening. If necessary, the protruding cable tie end can then be trimmed using an appropriate tool.
- 4.3. A tool can be used, at the discretion of the customer, to tighten the cable tie to a controlled, specified force.

5. REMOVAL OF CABLES (OR SIMILAR OBJECTS) FROM THE PRODUCT

If reconfiguration or rework of the cable is required, the cable tie should be removed carefully using an appropriate tool and discarded. A new cable tie should be used to re-install the cable following the rework.

If the bracket is damaged after installation or during operation, the bracket should be removed and replaced. For an optimal bond performance, the mounting surfaces will need to be re-prepared prior to application of adhesive and mounting of the replacement bracket. This process must be defined by the customer. Rework of the bracket is prohibited.