

L001067-01

Log Periodic 617-6000MHz 5G Antenna

L001067-01 antennas are ultra-wideband log periodic antennas.

Because they cover both cellular and WLAN global frequencies, they are very useful for CPE and base station equipment. This minimizes the amount of equipment needed for each service location. The antennas can be used both indoors or outdoors and come complete with all components needed for pole or wall mounting. The pigtail cable is an 18-inch outdoor rated cable terminated with an N female connector as standard. Other connector/cable configurations may be available upon request.

FEATURES

- Covers both cellular and WLAN frequencies
- Pole mount or wall mount with supplied mounting hardware
- Aesthetic appearance
- UV protected housing

APPLICATIONS

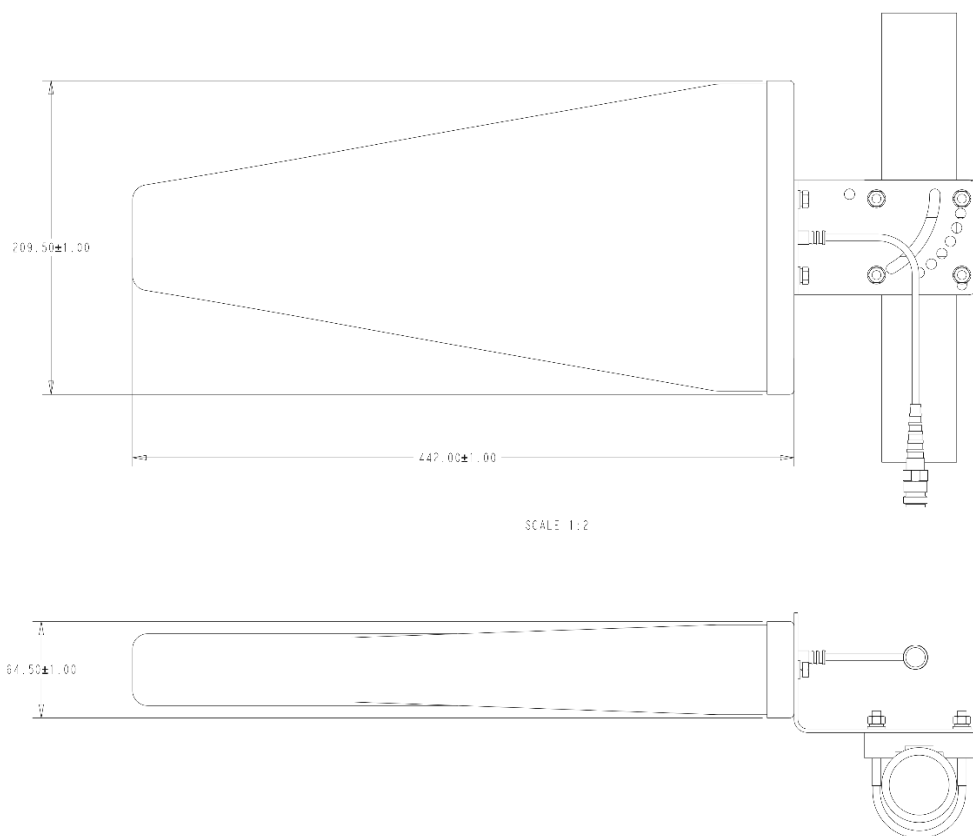
- Cellular / 5G / WLAN repeaters
- Indoor/outdoor
- Cellular / WLAN extenders
- WISP equipment
- Non-line of sight (NLOS)

SPECIFICATIONS

ELECTRICAL				
Frequency range (MHz)	617-960	1695-2700	3300-4200	4800-6000
Polarization	Vertical			
Gain (dBi)	7.0	7.5	9.0	8.0
Horizontal beam width (°)	100	90	80	65
Vertical beam width (°)	65	80	80	45
Front-to-back ratio (dB avg.)	21.0	23.0	15.0	15.5
Impedance (Ω)	50			
VSWR	≤ 1.8			
Maximum power (W)	50			

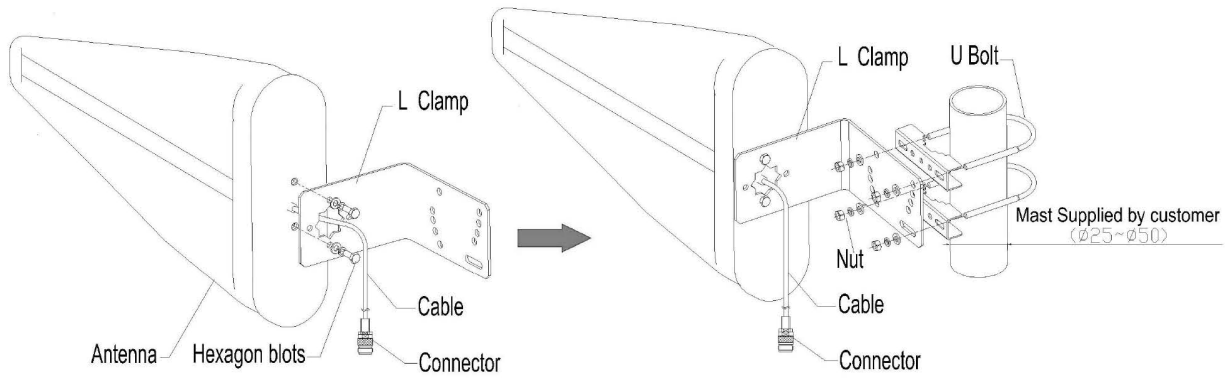
MECHANICAL	
Connector	N Female
Exposed cable size (cm)	30
Antenna size mm (in.)	440 x 210 x 65 (17.3 x 8.3 x 2.6)
Weight kg (lbs.)	1.0 (2.20) Antenna Only - Not Including Mounting Bracket
Radome material	ABS
Radome color	White
Operating temperature °C (°F)	-40 to +85 (-40 to 185°F)
Application	Indoor / Outdoor
Mechanical tilt (°)	0 to 60
Rated wind velocity mph (km/h)	125 (201)
Suitable pole diameter mm (in.)	Ø25-50 (0.98-1.97)
Mounting kit	Included

MECHANICAL DRAWINGS

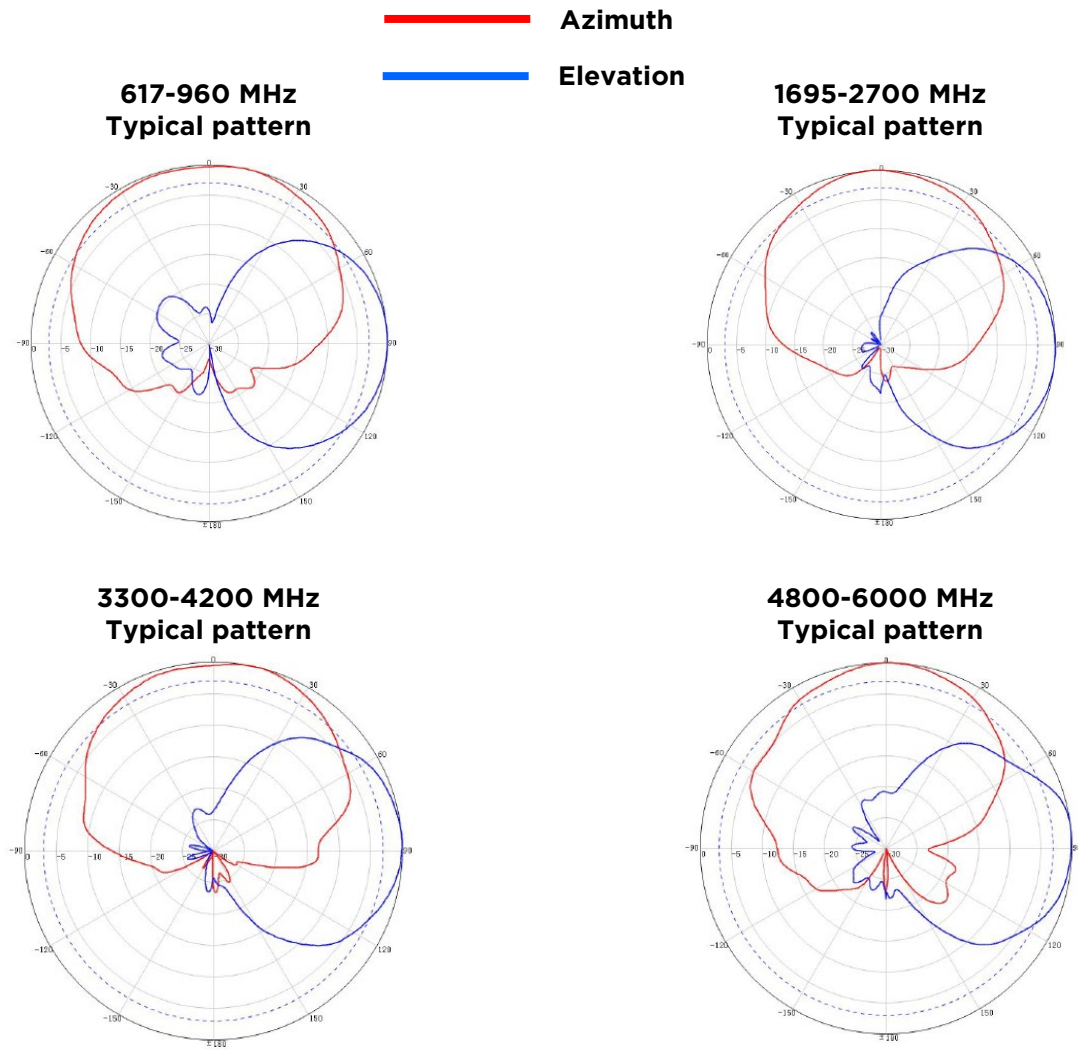


Note: Ensure that the antenna is installed with the drip hole at the bottom to avoid water penetration into the antenna.

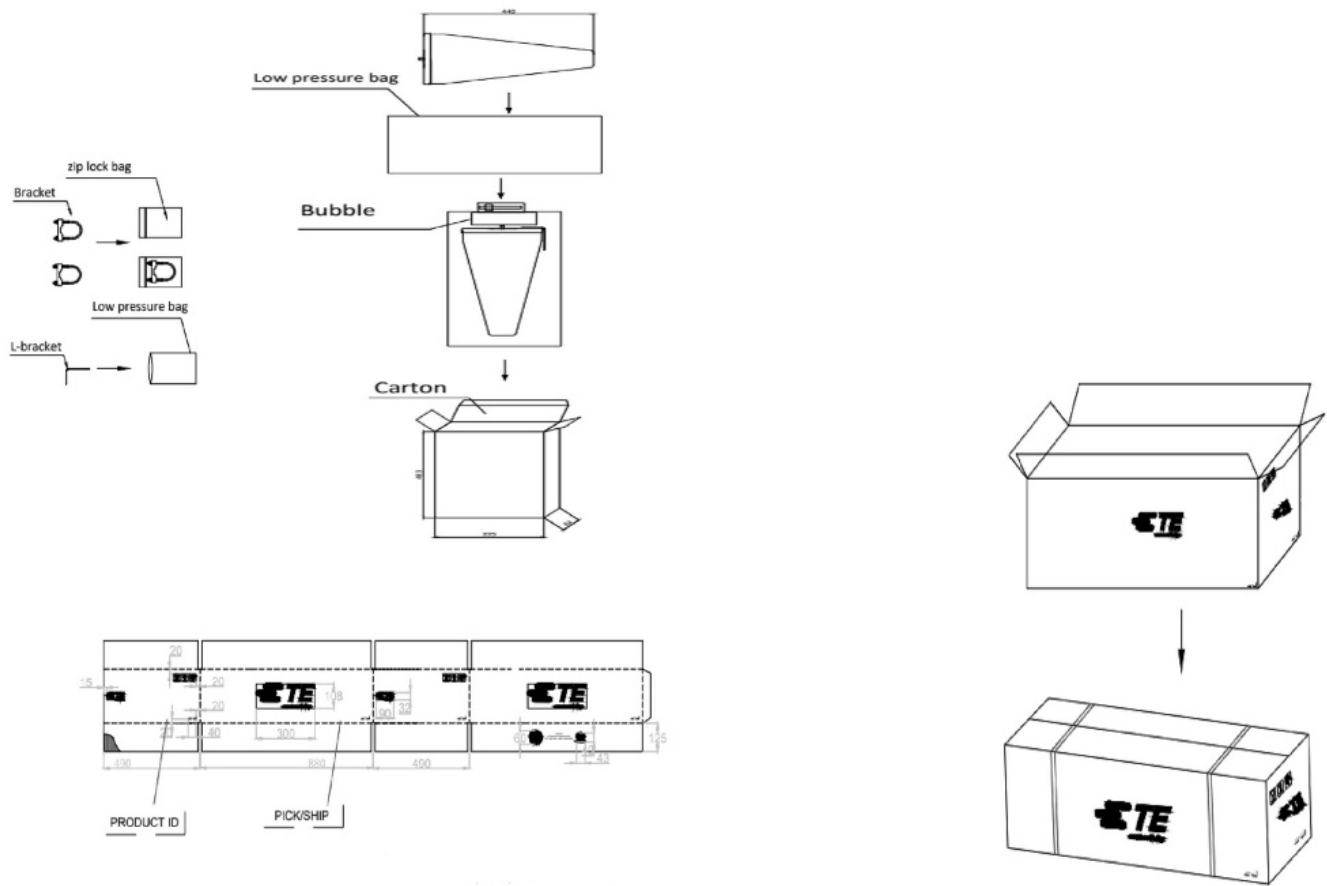
INSTALLATION SKETCH



RADIATION PATTERNS



PACKING INFORMATION



PACKAGED DIMENSION	UNIT CARTON	MASTER CARTON
Number of Antennas	1	6
Length - cm (in)	48.3 (19.02)	50 (19.69)
Width - cm (in)	22.3 (8.78)	27 (10.63)
Height - cm (in)	8.4 (3.31)	48 (18.90)
Est. Shipping Weight - kg (lbs.)*	1.44 (3.18)	9.84 (21.69)

* Including mounting hardware

TE TECHNICAL SUPPORT CENTER

USA:	+1 (800) 522-6752
Canada:	+1 (905) 475-6222
Mexico:	+52 (0) 55-1106-0800
Latin/S. America:	+54 (0) 11-4733-2200
Germany:	+49 (0) 6251-133-1999
UK:	+44 (0) 800-267666
France:	+33 (0) 1-3420-8686
Netherlands:	+31 (0) 73-6246-999
China:	+86 (0) 400-820-6015

te.com

TE, TE Connectivity, TE connectivity (logo), and EVERY CONNECTION COUNTS are trademarks owned or licensed by the TE Connectivity plc family of companies. Other product names, logos, and company names mentioned herein may be trademarks of their respective owners.

While TE has made every reasonable effort to ensure the accuracy of the information in this document, TE does not guarantee that it is error-free, nor does TE make any other representation, warranty or guarantee that the information is accurate, complete, correct, reliable or current. TE reserves the right to make any adjustments to the information contained herein at any time without notice. TE EXPRESSLY DISCLAIMS ALL IMPLIED WARRANTIES REGARDING THE INFORMATION CONTAINED HEREIN, INCLUDING, BUT NOT LIMITED TO, ANY IMPLIED WARRANTIES OF MERCHANTABILITY OR FITNESS FOR A PARTICULAR PURPOSE. In no event will TE be liable for any direct, indirect, incidental, special or consequential damages arising from or related to recipient's use of the information. It is the sole responsibility of recipient of this information to verify the results of this information using their engineering and product environment. Recipient assumes any and all risks associated with the use of the information. Antenna performance may vary. TE is a component manufacturer, and customer and/or end-user is responsible for all end-use compliance and regulatory requirements.

©2025 TE Connectivity. All Rights Reserved.

08/25 Original
