



L001066-01

380-450 MHz Omnidirectional Outdoor Mast-Mountable Antenna

The L001066-01 antenna has a wideband frequency coverage from 380-450 MHz.

The antenna is mast mountable, using the supplied mounting hardware, for masts and poles from 40-70mm in diameter.

Suitable for indoor or outdoor applications.

FEATURES AND BENEFITS

- Wideband frequency coverage (380-450 MHz)
- Rugged radome
- Suitable for indoor and outdoor operations
- Mast mountable with supplied bracket

APPLICATIONS

- 400 MHz and UHF operations
- Indoor/outdoor
- Broadcast
- Wireless access systems
- Trunking communications

SPECIFICATIONS

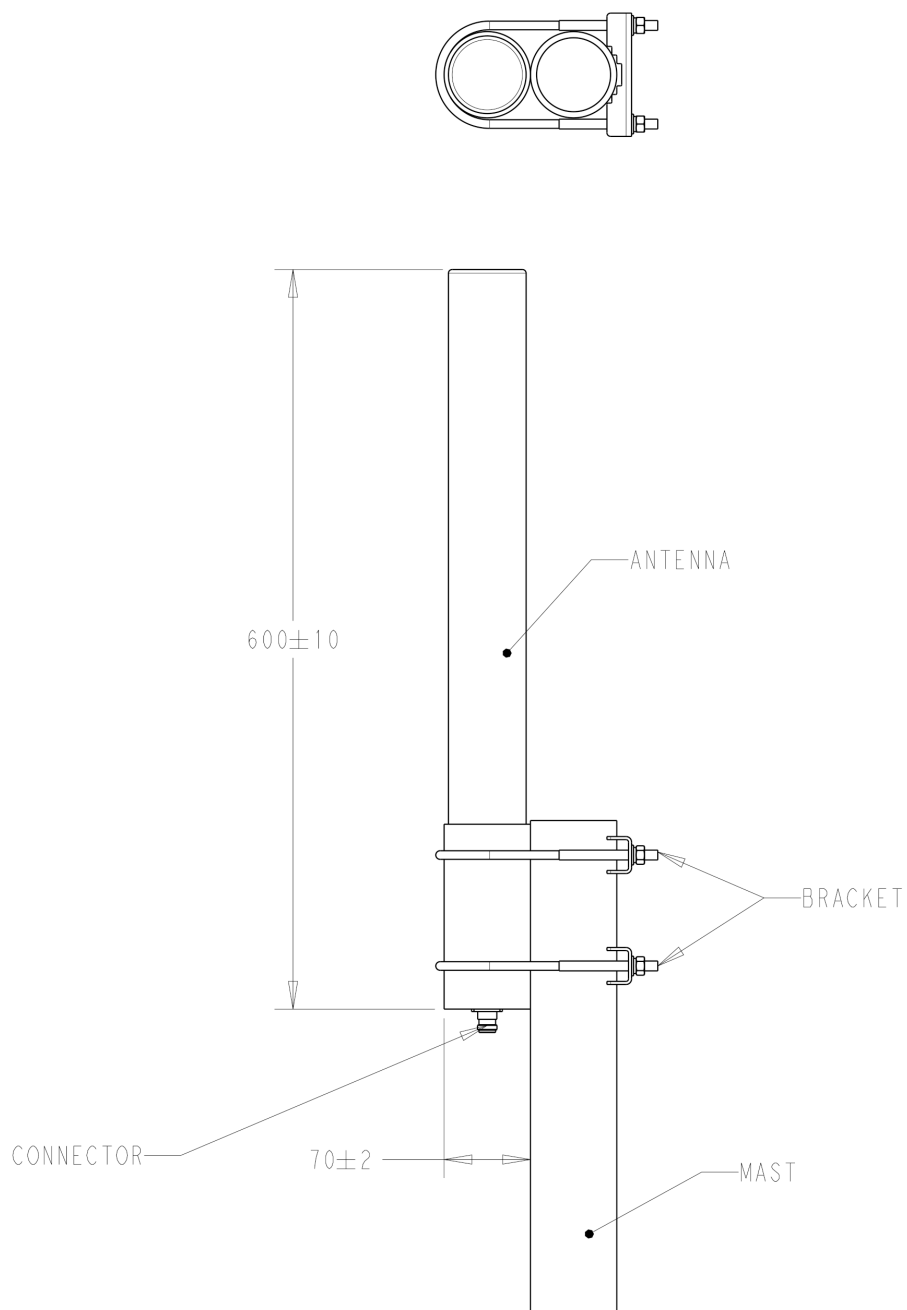
ELECTRICAL SPECIFICATION	
Operating Frequency (MHz)	380 - 450
VSWR - Max	<1.5
Peak Gain Max (dBi)	2.5
Average Efficiency %	76
Nominal Impedance (Ohms)	50
Max Power - Ambient 25°C (W)	100
E-Plane Beamwidth	58°
H-Plane Beamwidth	360°
Polarization	Vertical

MECHANICAL SPECIFICATION	
Dimensions - Height x Diameter - mm (in.)	600 x 70Ø (23.6 x 2.8Ø)
Weight - kg (lbs.)	1.7 (3.75)* *Antenna Only - Not Including Mounting Bracket
Connector	N-Type Female
Radome Color / Material	White - Fiberglass
Mounting	Pole/Mast - Bracket Supplied
Max Mast Diameter - mm (in.)	70 (2.8)

ENVIRONMENTAL SPECIFICATION

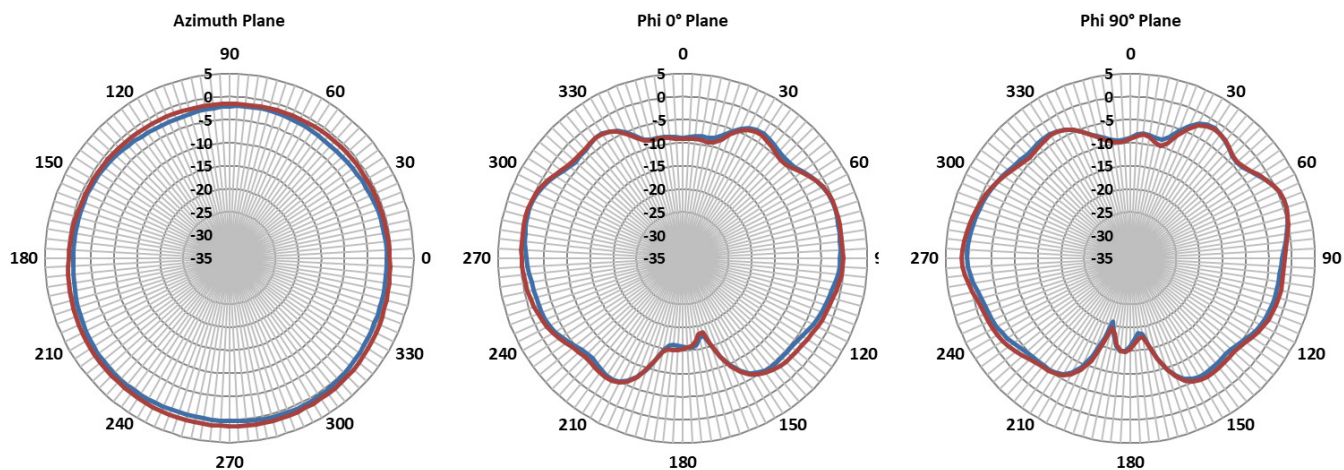
Operating Temp. °C (°F)	-40 to +85 (-40 to 185)
Storage Temperature °C (°F)	-40 to +85 (-40 to 185)
Material Substance Compliance	RoHS Compliant CE & UKCA Compliant

MECHANICAL DRAWING & INSTALLATION SKETCH

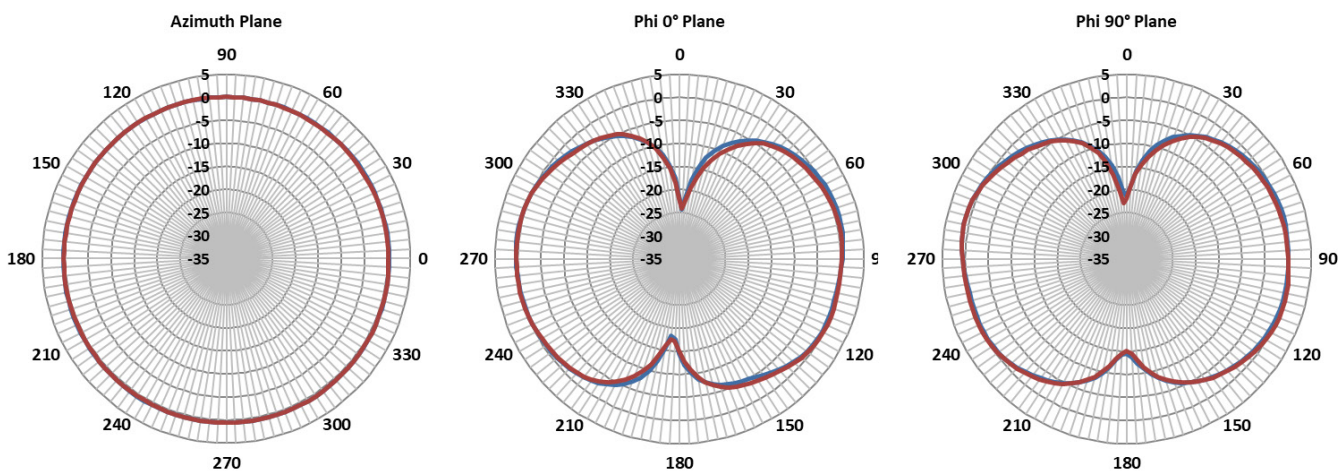


RADIATION PATTERNS

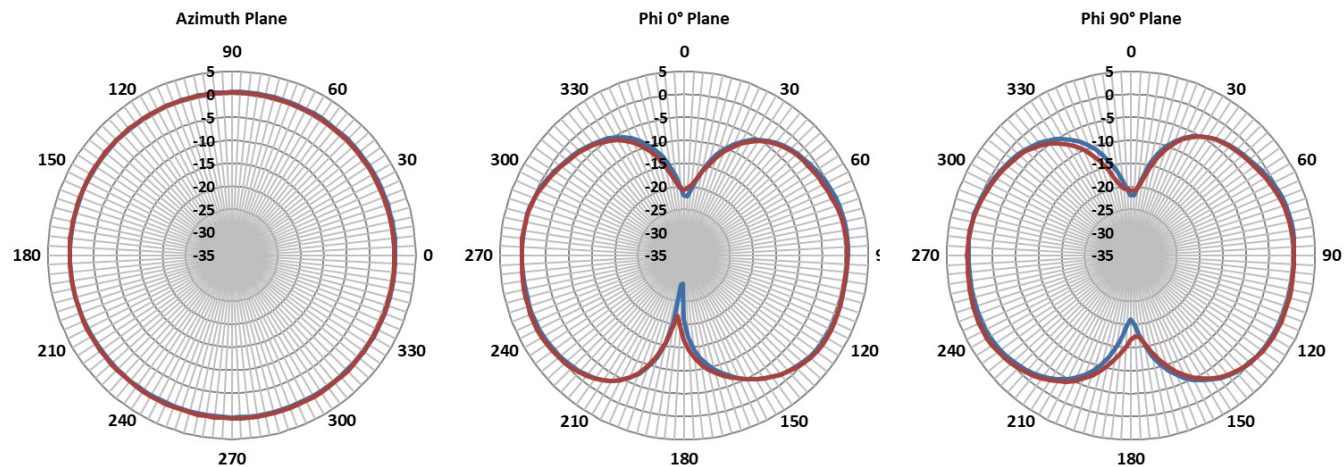
Radiation Patterns at 380 MHz



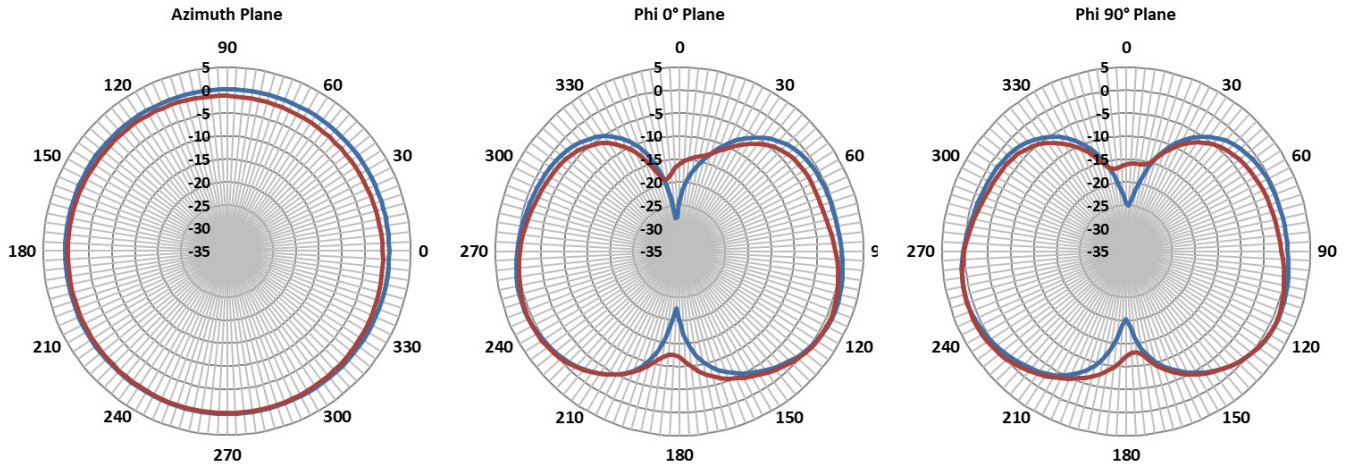
Radiation Patterns at 400 MHz



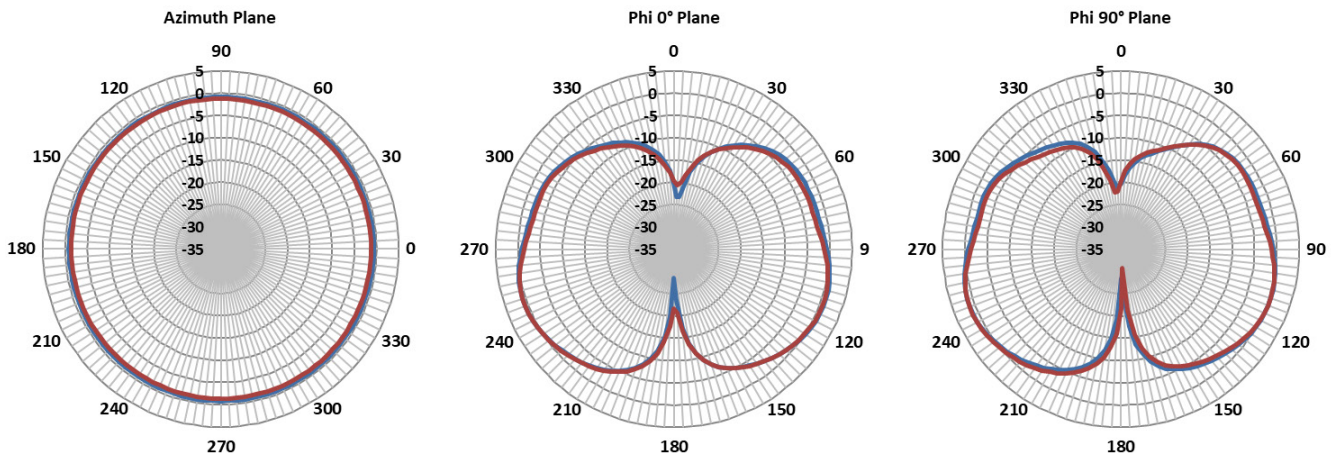
Radiation Patterns at 415 MHz



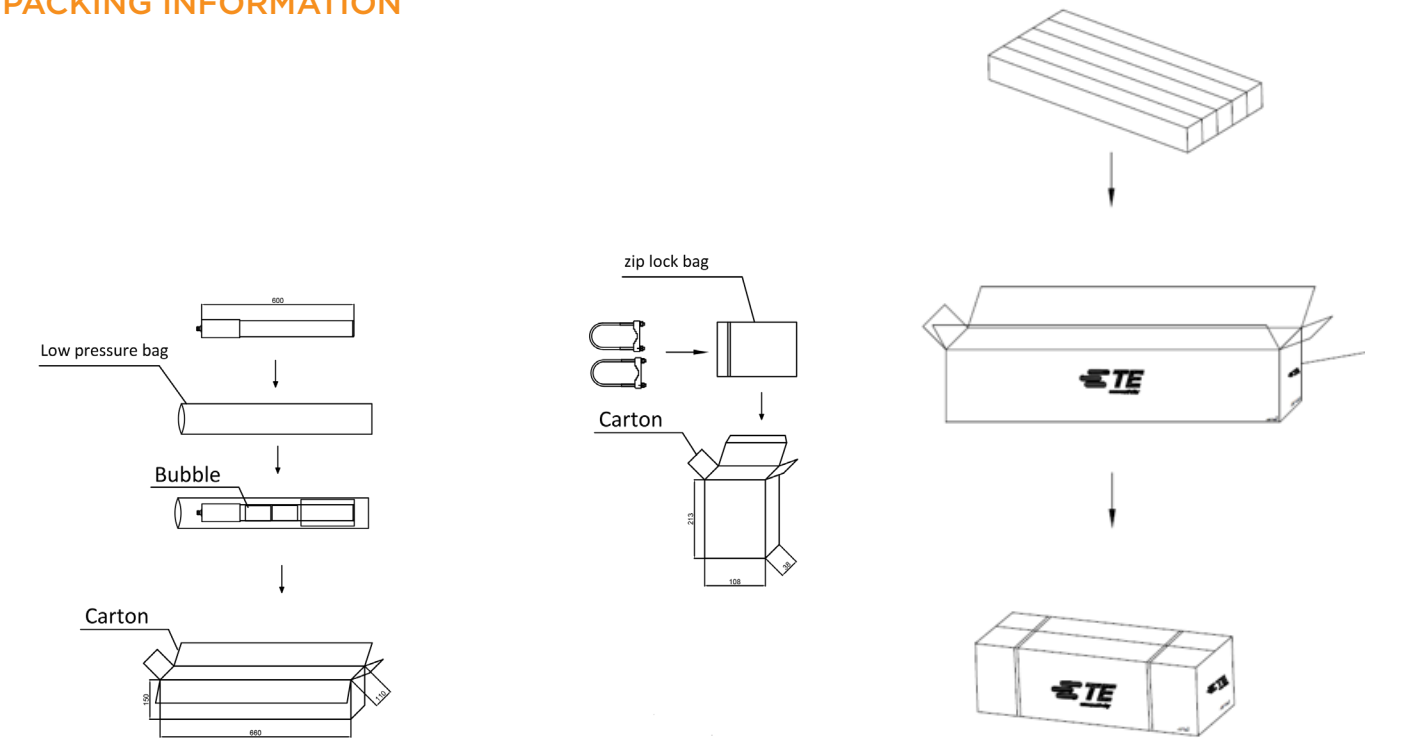
Radiation Patterns at 430 MHz



Radiation Patterns at 450 MHz



PACKING INFORMATION



PACKAGED DIMENSIONS	UNIT CARTON	MASTER CARTON
Number of Antennas	1	5
Length - cm (in)	66 (25.98)	68 (26.77)
Width - cm (in)	11 (4.33)	58 (22.84)
Height - cm (in)	15 (5.91)	20 (7.87)
Est. Shipping Weight - kg (lbs.)*	2.35 (5.181)	14.42 (31.79)

* Including mounting hardware

TE TECHNICAL SUPPORT CENTER

USA:	+1 (800) 522-6752
Canada:	+1 (905) 475-6222
Mexico:	+52 (0) 55-1106-0800
Latin/S. America:	+54 (0) 11-4733-2200
Germany:	+49 (0) 6251-133-1999
UK:	+44 (0) 800-267666
France:	+33 (0) 1-3420-8686
Netherlands:	+31 (0) 73-6246-999
China:	+86 (0) 400-820-6015

te.com

TE, TE Connectivity, TE connectivity (logo), and EVERY CONNECTION COUNTS are trademarks owned or licensed by the TE Connectivity plc family of companies. Other product names, logos, and company names mentioned herein may be trademarks of their respective owners.

While TE has made every reasonable effort to ensure the accuracy of the information in this document, TE does not guarantee that it is error-free, nor does TE make any other representation, warranty or guarantee that the information is accurate, complete, correct, reliable or current. TE reserves the right to make any adjustments to the information contained herein at any time without notice. TE EXPRESSLY DISCLAIMS ALL IMPLIED WARRANTIES REGARDING THE INFORMATION CONTAINED HEREIN, INCLUDING, BUT NOT LIMITED TO, ANY IMPLIED WARRANTIES OF MERCHANTABILITY OR FITNESS FOR A PARTICULAR PURPOSE. In no event will TE be liable for any direct, indirect, incidental, special or consequential damages arising from or related to recipient's use of the information. It is the sole responsibility of recipient of this information to verify the results of this information using their engineering and product environment. Recipient assumes any and all risks associated with the use of the information. Antenna performance may vary. TE is a component manufacturer, and customer and/or end-user is responsible for all end-use compliance and regulatory requirements.

©2025 TE Connectivity. All Rights Reserved.

08/25 Original

