

TE CONNECTIVITY'S ALCOSWITCH MINIATURE TOGGLE & PUSHBUTTON SWITCHES

INTRODUCTION

The TE Connectivity (TE) Alcoswitch Delta Series of miniature toggle and pushbutton switches delivers reliable electrical performance, long mechanical life, and compact design flexibility for space constrained applications. Designed for precision control and signal switching, The series offers robust construction with multiple actuator and termination options.

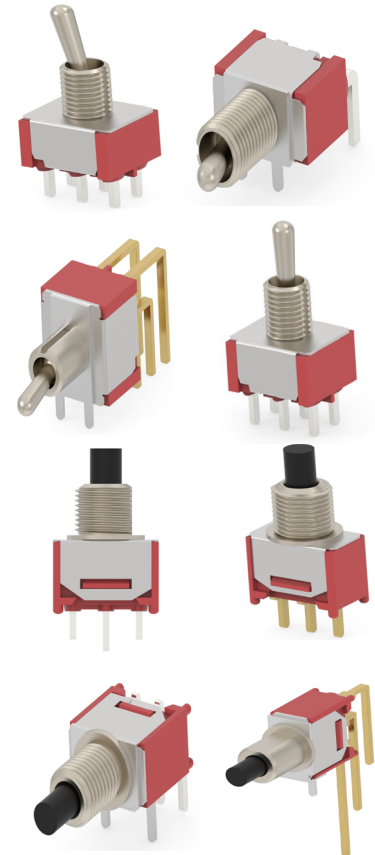
The Alcoswitch Delta Series helps to ensure consistent actuation and dependable performance in low power signal and moderate power control applications. The switches are UL rated, RoHS compliant, and lead free, supporting global safety and environmental requirements.

FEATURES

- Compact miniature design for high density applications
- Toggle and pushbutton configurations available
- Multiple circuit options and actuator styles
- Momentary and maintained action variants
- Panel mount and PCB mount options
- Long mechanical life and reliable performance
- UL, RoHS compliant, and lead free
- UL (E46765) for Delta Miniature Push Button (DMP) & Delta Miniature Toggle (DMT) Switches 

APPLICATIONS

- Industrial controls and automation
- Test, measurement, and instrumentation equipment
- Medical and diagnostic electronics
- Telecommunications and networking devices
- Commercial, audio visual, and security systems



ALCOSWITCH MINIATURE TOGGLE & PUSHBUTTON SWITCHES

TYPICAL PERFORMANCE CHARACTERISTICS

SPECIFICATIONS	MINIATURE TOGGLE SWITCHES	SUB-MINIATURE PUSHBUTTON SWITCHES
Mechanical Life	upto 40,000 make-and-break cycles	upto 50,000 make-and-break cycles
Contact Resistance	10 mΩ max. initial @ 2-4 VDC 100 mA for both silver and gold plated contacts.	20 mΩ max. initial @ 2-4 VDC 100 mA for both silver and gold plated contacts.
Insulation Resistance	1000 M Ω min.	1000 M Ω min.
Dielectric Strength	1000 Vrms min.@sea level	1000 Vrms min.@sea level
Operating Temperature	-40 °C to +85 °C	-40 °C to +85 °C

CONTACT RATINGS

Contact Plating	Terminal Plating	Ratings	
		Miniature Toggle	Miniature Pushbutton
Silver	Silver	5 Amps @120 VAC or 28VDC	3 Amps @120 VAC or 28VDC
Gold over Silver	Gold over Silver	2 Amps @250 VAC	1 Amps @250 VAC
Gold	Gold	0.4 Volt-Amps(VA) max. @20V max. (AC or DC)	0.4 Volt-Amps(VA) max. @20V max. (AC or DC)

MATERIAL SPECIFICATIONS

SPECIFICATIONS	MINIATURE TOGGLE SWITCHES	SUB-MINIATURE PUSHBUTTON SWITCHES
Case	Diallyl phthalate (DAP) (UL94V-0)	Diallyl phthalate (DAP) (UL94V-0)
Plunger	N/A	Nylon 6/6, Black
Actuator	Brass, Tin-Cobalt alloy over Ni Plated	N/A
Bushing	Brass, nickel plated	Zinc, nickel plated
Housing	Stainless steel	Stainless steel
Terminals/Contacts	Copper	Copper alloy
Switch Support	Brass, Tin plated	Brass, Tin plated

ALCOSWITCH MINIATURE TOGGLE & PUSHBUTTON SWITCHES

ENVIRONMENTAL CHARACTERISTICS

Characteristics	Test Conditions		Requirements	
	Toggle Switches	Pushbutton Switches	Toggle Switches	Pushbutton Switches
Visual Examination	By Visual Examination check without and out pressure & testing.		There shall be no defects that affect the serviceability of the product.	
Contact Resistance	@2-4VDC 100mA. For both silver and gold plated contacts.		10mΩ Max.	20mΩ Max.
Insulation Resistance	Measurements shall be made following application of 1000 V/DC 100mA potential across terminals and cover 1 minute.		1000MΩ min/1000V	
Dielectric Withstanding Voltage	1000 VAC(50Hz or 60Hz) 0.5mA shall be applied across terminals and cover for 1 minute.		There shall be no breakdown or flashover.	
Solder Heat Resistance	<p>1. Manual Soldering: Soldering Temperature: Max.350 °C Continuous Soldering Time : Max. 5 seconds.</p> <p>2. WAVE Soldering : Soldering Temperature: 260±5 °C Duration of Solder Immersion: 5 ±1 seconds</p> <p>Temperature Profile</p> <p>Frequency of Soldering Process 2 times max.(PCB is 1.6mm in thickness) Precautions in Handling Care should be exercised so that flux from the upper part of the printed circuit board does not adhere to the switch.</p>		<p>1. Shall be free from pronounced backlash and falling-off or breakage terminals.</p> <p>2. As shown in item 2-4.</p>	

ALCOSWITCH MINIATURE TOGGLE & PUSHBUTTON SWITCHES

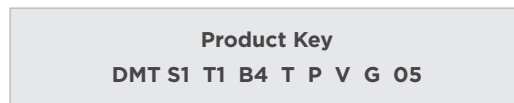
Characteristics	Test Conditions		Requirements	
	Toggle Switches	Pushbutton Switches	Toggle Switches	Pushbutton Switches
Vibration	Shall be vibrated in accordance with Method 201A of MIL-STD-202F 1. Frequency: 10Hz-55Hz-10Hz in 1-min/cycle. 2. Direction: 3 vertical directions including the directions of operation 3. Test time: 2 hours each direction.		As shown in item 2-4	
Shock	Shall be shocked in accordance with Method 213B condition A of MIL-STD-202F 1. Acceleration : 50g 2. Action time: 11±1m seconds. 3. Testing Direction: 6 sides. 4. Test Cycle: 3 times in each direction.		As shown in item 2-4	
Actuation Force	MODEL-1305N MECHANICAL TEST 500gram/ 1000gram/ 2000gram.	MODEL-1305N MECHANICAL TEST 500gram/ 1000gram/ 2000gram. Stroke: 0.8-1mm.	At for test the force. Force: 200±100 grams.	At for test the force. Force: 200±100 grams. Stroke: 0.8-1mm.
Operating life	Measurements shall be made following the test forth below: 1. 5A@120VAC resistive load - silver plated. 2A@250VAC resistive load - silver plated. 0.4VA max@ 20VAC max resistive load gold plated. 2. Rate of Operation: 6-8 operation cycles per minute. 3. Electronics Life Test: 6,000 cycles.	Measurements shall be made following the test forth below: 1. 3A@120VAC resistive load - silver plated. 1A@250VAC resistive load - silver plated. 0.4VA max @20VAC max resistive load gold plated. 2. Rate of Operation: 6-8 operation cycles per minute. 3. Electronics Life Test: 6,000 cycles	1. Dielectric Strength- 1000V. 2. Insulation Resistance: 1000MΩ min.	
	Mechanical Life Test: 40,000 cycles.	Mechanical Life Test: 50,000 cycles.	Contact Resistance: 10mΩ Max.	Contact Resistance: 20mΩ Max.
Resistance Low Temperature	Following the test set forth below the sample shall be left in normal temperature and humidity conditions for 1 hour before the measurements are made: 1. Temperature: -40±3 °C 2. Time: 96 hours.		As shown in item 2-4.	
Resistance High Temperature	Following the test set forth below the sample shall be left in normal temperature and humidity conditions for an hour before the measurements are made: 1. Temperature: 85±2 °C 2. Time: 96 hours.		As shown in item 2-4.	

ALCOSWITCH MINIATURE TOGGLE & PUSHBUTTON SWITCHES

Characteristics	Test Conditions		Requirements	
	Toggle Switches	Pushbutton Switches	Toggle Switches	Pushbutton Switches
Resistive Humidity	Following the test set forth below the sample shall be left in normal temperature and humidity conditions for an hour before the measurements are made: <ol style="list-style-type: none"> 1. Temperature: 40 ± 2 °C 2. Relative Humidity: 90-95% 3. Time: 96 hours. 		1. Contact Resistance: 10 mΩ Max. 2. Insulation Resistance: 1000MΩ min.	1. Contact Resistance: 20 mΩ Max. 2. Insulation Resistance: 1000MΩ min.
The Salt Testing	Following the test set forth below the sample shall be left in normal temperature and humidity conditions for an hour before the measurements are made: <ol style="list-style-type: none"> 1. Temperature: 35 ± 2 °C 2. The ratio of salt-water: 5% 3. The spray amount of salt- water: 1-2 ml/h. 4. Time: 48 hours. 		The testing standard based on bubble, crack, and magnifying glass with gauge.	
Hazardous Substances Free (HSF)	N/A	Refer RoHS Standard: The electronic electrical machinery product limits with six big chemical materials.	N/A	Cd: 100ppm Pb: 1000ppm Hg: 1000ppm Cr6+: 1000ppm PBB/PBDE: 1000ppm

ALCOSWITCH MINIATURE TOGGLE & PUSHBUTTON SWITCHES

PRODUCT CODE STRUCTURE - TOGGLE SWITCHES



Series

DMT	Delta Miniature Toggle
------------	------------------------

Poles

S	Single Pole
D	Double Pole

Switch Function

1	ON NONE ON
2	ON OFF ON
3	ON NONE ON

Actuator Style - Length

T1	Toggle - 5.08 mm
T2	Toggle - 6.46 mm
T3	Toggle - 6.86 mm
T4	Toggle - 10.41 mm

Bushing Length (mm)

B1	7.1
B2	7.31
B3	8.5
B4	8.89

Compliant

O5	ROHS + Lead Free
-----------	------------------

Contact

G	Gold
S	Silver

Mounting Style

R	Right Angle
V	Vertical

Terminal Type

P	PC Mounting
S	Solder Lug

Bushing

T	Threaded
P	Pole

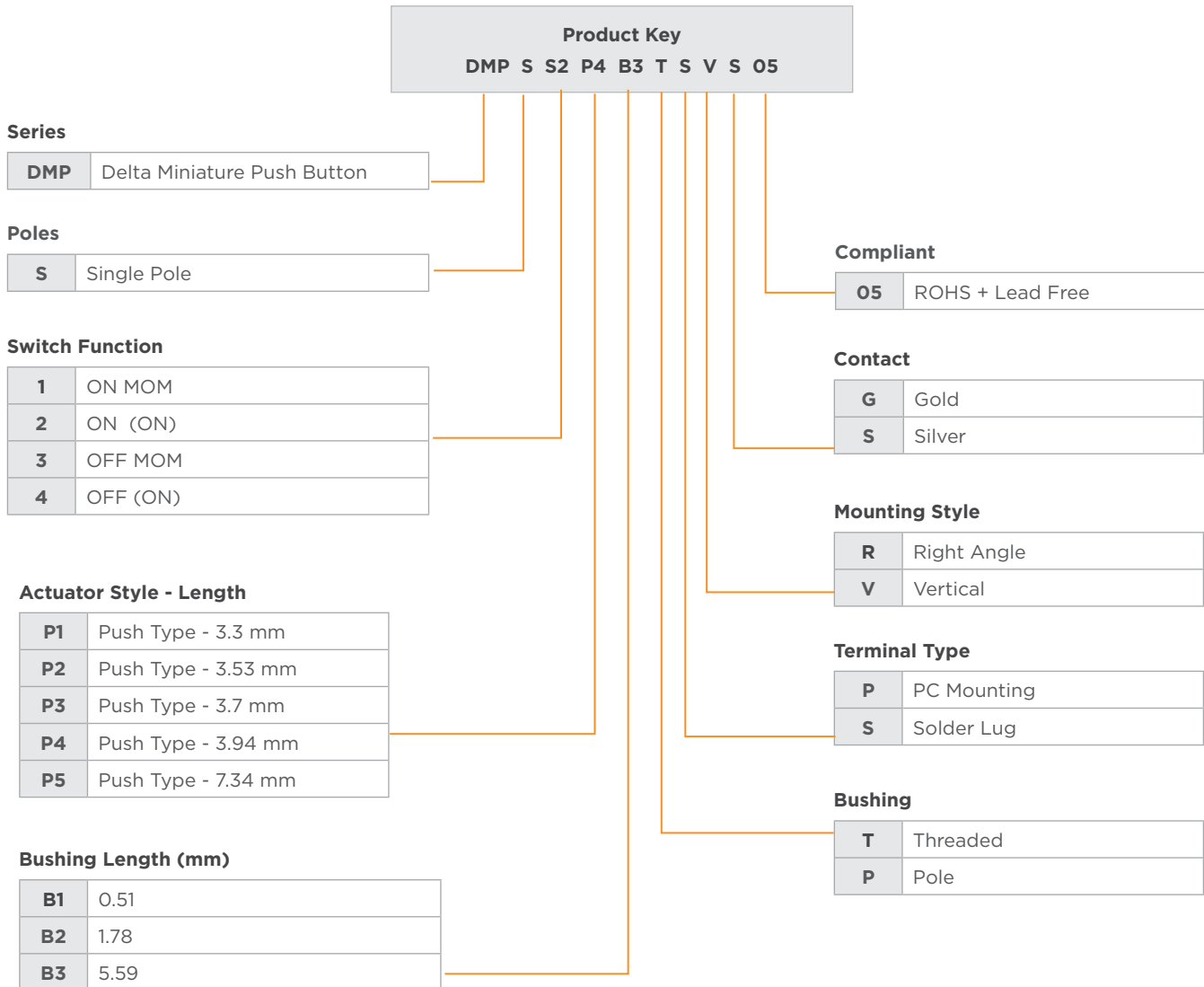
ALCOSWITCH MINIATURE TOGGLE & PUSHBUTTON SWITCHES

PRODUCT SELECTION EXAMPLES - TOGGLE SWITCHES

SMART PART NUMBER	Body Style	Switch Function	Electrical rating	Terminal Plating	Part number
DMTS1T1B4TPVG05	SPDT	ON NONE ON	0.4VA	G	2532788-1
DMTS1T1B3TPRS05	SPDT	ON NONE ON	5A	S	2532788-2
DMTS1T1B4TPVS05	SPDT	ON NONE ON	5A	S	2532788-3
DMTS1T2B2TPRS05	SPDT	ON NONE ON	5A	S	2532788-4
DMTS2T3B1TPVG05	SPDT	ON OFF ON	0.4VA	G	2532788-5
DMTS2T4B4PPVG05	SPDT	ON OFF ON	0.4VA	G	2532788-6
DMTD1T4B4TSVS05	DPDT	ON NONE ON	5A	S	2532788-7
DMTD1T4B4TPVG05	DPDT	ON NONE ON	0.4VA	G	2532788-8
DMTD1T4B4TPVS05	DPDT	ON NONE ON	5A	S	2532788-9
DMTD1T4B3TPVS05	DPDT	ON NONE ON	5A	S	1-2532788-0
DMTD2T4B4TPVS05	DPDT	ON OFF ON	5A	S	1-2532788-1
DMTD3T2B2PPRG05	DP3T	ON ON ON	0.4VA	G	1-2532788-2

ALCOSWITCH MINIATURE TOGGLE & PUSHBUTTON SWITCHES

PRODUCT CODE STRUCTURE - PUSH BUTTON SWITCHES



ALCOSWITCH MINIATURE TOGGLE & PUSHBUTTON SWITCHES

PRODUCT SELECTION EXAMPLES - PUSH BUTTON SWITCHES

SMART PART NUMBER	Body Style	Switch Function	Electrical rating	Terminal Plating	Part number
DMPS2P4B3TSVS05	SPDT	ON (ON)	3A	S	2532789-1
DMPS2P4B3TPVG05	SPDT	ON (ON)	0.4A	G	2532789-2
DMPS4P2B3TPRG05	SPST	OFF (ON)	0.4A	G	1-2532789-1
DMPS4P4B3PPVG05	SPST	OFF (ON)	0.4A	G	1-2532789-2
DMPS2P2B3PPRS05	SPDT	ON (ON)	3A	S	2532789-5
DMPS4P5B2PPRS05	SPST	OFF (ON)	3A	S	1-2532789-7
DMPS2P2B3TPRS05	SPDT	ON (ON)	3A	S	2532789-3
DMPS2P1B1PPRG05	SPDT	ON (ON)	0.4A	G	2532789-8
DMPS2P2B3TPRG05	SPDT	ON (ON)	0.4A	G	2532789-4
DMPS1P2B3TPRG05	SPDT	ON MOM	0.4A	G	2532789-6
DMPS2P3B1PPVG05	SPDT	ON (ON)	0.4A	G	2532789-7
DMPS1P1B1PPRG05	SPDT	ON MOM	0.4A	G	2532789-9
DMPS4P4B3TPVG05	SPST	OFF (ON)	0.4A	G	1-2532789-0
DMPS4P4B3PPRG05	SPST	OFF (ON)	0.4A	G	1-2532789-0
DMPS3P4B3PPVS05	SPST	OFF MOM	3A	S	1-2532789-0
DMPS4P3B1PPVG05	SPST	OFF (ON)	0.4A	G	1-2532789-0
DMPS4P1B1PPRS05	SPST	OFF (ON)	3A	S	1-2532789-0

te.com

©2026 TE Connectivity Ltd. Family of Companies. All Rights Reserved.

ALCOSWITCH, TE Connectivity, TE connectivity (logo) and Every Connection Counts are trademarks owned or licensed by the TE Connectivity plc family of companies. All other logos, products and/or company names referred to herein might be trademarks of their respective owners.

While TE has made every reasonable effort to ensure the accuracy of the information in this document, TE does not guarantee that it is error-free, nor does TE make any other representation, warranty or guarantee that the information is accurate, correct, reliable or current. TE reserves the right to make any changes to the information contained herein without prior notice. TE Connectivity assumes only those obligations set forth in the terms and conditions for this product and shall in no event be liable for any incidental, indirect, or consequential damages arising out of the sale, resale, use, or misapplication of the product. TE expressly disclaims any implied warranties with respect to the information contained herein, including, but not limited to, implied warranties of merchantability or fitness for a particular purpose. Dimensions, specifications and/or information contained herein are for reference purposes only and are subject to change without notice. Consult TE for the latest dimensions, specifications and/or information. Users of TE Connectivity products must make their own assessment as to whether the respective product is suitable for the respective desired application.

02/26 2532788 PS

USA: +1 (800) 522-6752

Canada: +1 (905) 475-6222

Mexico: +52 (0) 55-1106-0800

Latin/S. America: +54 (0) 11-4733-2200

Germany: +49 (0) 6251-133-1999

UK: +44 (0) 800-267666

France: +33 (0) 1-3420-8686

The Netherlands: +31 (0) 73-6246-999

China: +86 (0) 400-820-6015