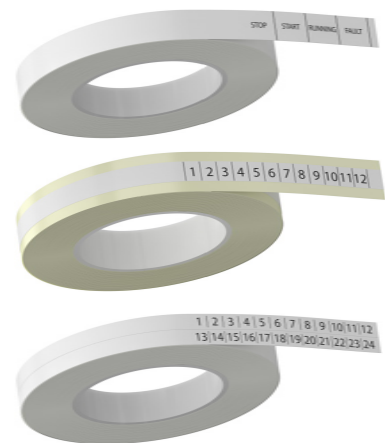
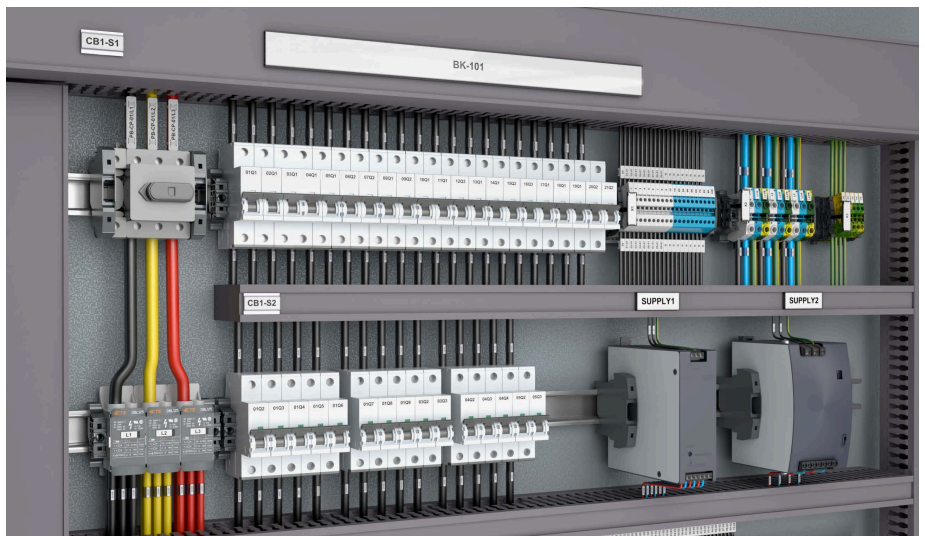


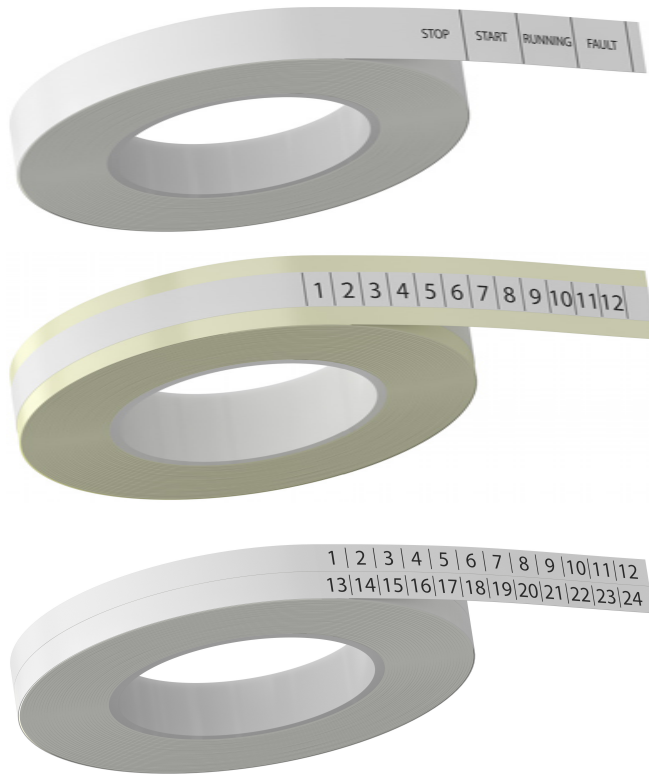
PRINTABLE CONTINUOUS STRIP LABELS

Printable continuous strip labels for electrical components



Identification solutions

Printable continuous strip labels



PRINTABLE CONTINUOUS STRIP LABELS FOR ELECTRICAL COMPONENTS

Benefit from TE Connectivity's (TE) experience in identification solution with the MC, RC and CP continuous strip labels that can be used with almost any TE thermal transfer roll printer to create identification labels for terminal block assemblies and electrical components.

Spoiled continuous strip labels are useful when user requires more flexibility on the length of the identification used and make them an economical alternative to conventional rigid marking cards. Label's length can be precisely configured by the software to match the respective ENTRELEC terminal block pitch. Printer cutter, as well as scissors can be used to cut the strips to the specified size. MC, RC and CP printable continuous strip labels are especially recommended to identify long assemblies of terminal blocks or electrical components within the electrical panels.

MC,RC,CP PRINTABLE CONTINUOUS STRIP LABELS

BENEFIT STATEMENTS

- Create identification labels for ENTRELEC terminal block assemblies and electrical components with TE's thermal transfer roll printers
- User flexibility to design custom length markers from 5 mm to 20 m using TE's WinTotal software
- Excellent reel length to help maximize bulk printing and minimize storage space
- Help reduce installation time with slide on or adhesive strip mounting
- Benefit from TE's unique packing system to load, print, store and help protect the printable continuous strip labels from dust

APPLICATIONS

- Electrical panel
- Industrial
- HVAC
- Automation

KEY FEATURES

- High performance thermal transfer printable labels in a continuous format
- Quick identification of terminal blocks assemblies on the top or side of the terminal blocks
- High print quality in 300 dpi or 600 dpi thanks to TE thermal transfer roll printers
- Cut to the desired length using the printer cutter, manual cutter or scissors
- Optimized packaging: load, print and store in a box that helps protect the roll from external dust and dirt
- Helps in waste reduction thanks to 100% use of the roll, narrow ribbon of 25 mm printing width and reduced plastic packaging
- Data input and print management with TE's Wintotal software

Continuous printable adhesive label strip (MC)

Especially designed for the identification of ENTRELEC SNK series terminal block assemblies, MC strips are an excellent alternative to conventional marking tags. MC Strips continuous format allow s fast and easy identification of long assemblies. The permanent acrylic adhesive helps to match the SNK flat marking area and provides good adhesion overtime.

FEATURES

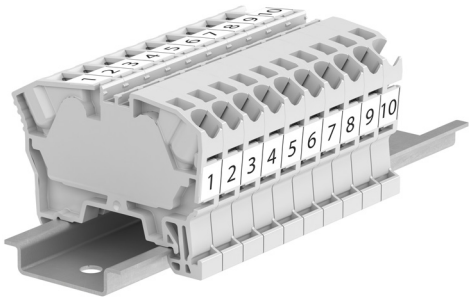
- Strip mounting on top or side marking area of ENTRELEC SNK series terminal blocks
- Adhesive strip for convenient mounting on flat surface
- Roll of 20 m length
- Rigid polypropylene material
- Permanent acrylic adhesive
- Data input with WinTotal software
- High print quality in 300 dpi or 600 dpi using TE thermal transfer printers.

BENEFITS

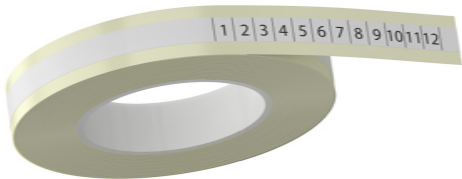
- Fast assembly identification of ENTRELEC SNK series terminal blocks with continuous format self adhesive MC strip
- Can be cut to required length with printer cutter, cutter or scissors
- Optimized roll length to cover ~ 38 00 TB of 5.2 mm pitch
- Waste reduction : Virtually no waste material on SNA strip, design adjusted SNK strip liner, narrow ribbon of 25 mm width and reduced plastic packaging
- Optimized packaging : load, print and store in 1 box. Direct use within the printer, easy to store after use, strip dust protection.

APPLICATIONS

- Electrical panel
- Industrial
- HVAC
- Automation



SNK assembly top and side marking



Temperature rating

Operating temperature range:
-40°C to 100°C

Specifications and approvals

- Halogen reduced
- ROHS
- REACH
- MIL-STD-202

Recommended hardware and software

- Printer: T2212, T2212-E, T3212, T3224
- Ribbon: 1976 - 25 mm (width)
- Software: WINTOTAL



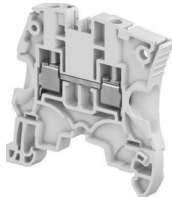

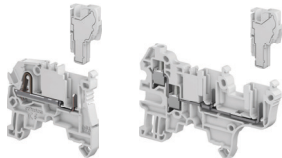
For more information

- Technical datasheet: TTDS-288
- TT printer accessories: TTDS-260
- Ribbon matrix pdf: 411-121005
- Ribbon selector tool : [Link](#)

Description	Part Number	Color	Strip width	Number of strip per roll	Roll length
MC-STRIP-20M-9-9	1SNK140901R0000	White	9 mm	1	20 m

Selection guide
Printable continuous ENTRELEC terminal blocks/labels compatibility

MC STRIP LABELS to identify ENTRELEC SNK Series terminal blocks

			Top mounting	Side mounting
				
Type	Pitch (mm)	Pitch (inch)		
 Screw clamp terminal blocks	ZS4...	5.2	●	●
	ZS6...	6	●	●
	ZS10...	8	●	●
	ZS16...	10	●	●
	ZS25...	12	●	●
	ZS35...	16	●	●
	ZS50...	16	●	●
	ZS70...	22	●	●
	ZS95...	26	●	●
	ZS150...	31	○	○
ZS240...	36	○	○	
 PI-Spring terminal blocks	ZK2.5...	5.2	●	●
	ZK4...	6	●	●
	ZK6...	8	●	●
	ZK10...	10	●	●
	ZK16...	12	●	●
 Pluggable terminal blocks and female plugs	ZD2.5...	5.2	●	●
	ZDK2.5...	5.2	●	●
	ZDK4...	6	●	●
	ZDS4...	5.2	●	●
	ZDS4...-R1	6	●	●
	CDK2.5...	5.2		○
	CDK4...	6		○
	CDS4...	5.2		○
	CDS...R1	6		○

● Recommended

○ Possible

Continuous printable strip labels (RC and CP)

Especially designed for the identification of ENTRELEC terminal block assemblies, RC strips are an excellent alternative to conventional marking tags. RC Strips continuous format allows fast and easy identification of long assemblies.

CP strip version allows the fast identification of electrical components and devices with the help of PLHA label holder.

FEATURES

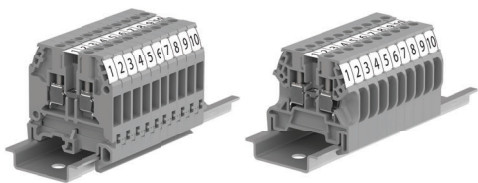
- RC strip : Print 2 strips in 1 go, as RC strip rolls contain 2 strips across
- RC strip : Mounting on top or side marking area of SNA terminal blocks
- CP strip : Mounting onto PLHA Label holder for component identification
- Convenient slide in strip thanks to material rigidity
- Roll of 20 m length
- Rigid PVC material
- Data input with WINTOTAL software
- High print quality in 300 dpi or 600 dpi using TE thermal transfer printers.

BENEFITS

- Fast assembly identification of SNA and SNA compact terminal blocks using RC strips with a continuous format
- Print 2 RC strips in 1 go , to save operation time and ribbon
- Can be cut to required length with printer cutter, cutter or scissors
- Optimized roll length to cover ~4000 TB of 5 mm pitch by RC strip
- Waste reduction : 100% roll material used, narrow ribbon of 25mm width and reduced plastic packaging.
- Optimized packaging : load, print and store in 1 box. Direct use within the printer, easy to store after use, strip dust protection.

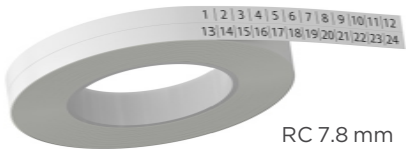
APPLICATIONS

- Electrical panel
- Industrial
- HVAC
- Automation



SNA assembly top marking

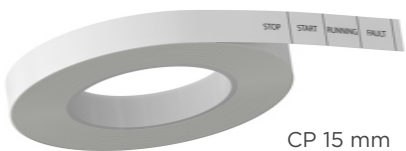
SNACompact assembly side marking



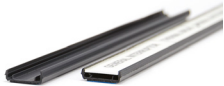
RC 7.8 mm



RC 10.2 mm



CP 15 mm



PLHA Holder

Temperature rating

Operating temperature range:
-40°C to 85°C

Specifications and approvals

- MIL-STD-202
- UL STD 224-E35586
- ROHS
- REACH

Recommended hardware and software

- Printer: T2212, T2212-E, T3212, T3224
- Ribbon: 1976 - 25 mm (width)
- Software: WINTOTAL

For More information

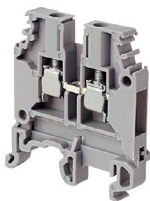
- Technical datasheet: TTDS-287
- TT printer accessories: TTDS-260
- Ribbon matrix pdf: 411-121005
- Ribbon selector tool : [Link](#)

Description	Part Number	Color	Strip width	Number of strip per roll	Roll length
RC-STRIP-20M-7-9	1SNA235614R0000	White	7.8 mm	2	20 m
RC-STRIP-20-10-9	1SNA235615R0000	White	10.2 mm	2	20 m
CP-STRIP-20M-15-9	1SNA235616R0000	White	15 mm	1	20 m

Selection guide

Printable continuous ENTRELEC terminal blocks/labels compatibility

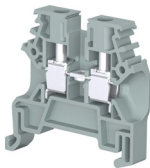
RC strip labels to identify ENTRELEC SNA terminal blocks



Screw clamp terminal blocks

			RC-STRIP-20M-7-9 1SNA235614R0000	RC-STRIP-20M-10-9 1SNA235615R0000	
			Top mounting	Top mounting	Side mounting
Type	Pitch (mm)	Pitch (inch)			
MA2.5/5...	5	0.197		●	●
M4/6...	6	0.236	●		●
M4/8...	8	0.315	●		●
M6/8...	8	0.315	●		●
M10/10...	10	0.394	●		○
M16/12...	12	0.472	●		○
M35/16...	16	0.630	●		○
D70/22...	22	0.866			○
D95/26...	26	1.024			○

RC strip labels to identify ENTRELEC SNACompact terminal blocks



Screw clamp terminal blocks

			RC-STRIP-20M-7-9 1SNA235614R0000	RC-STRIP-20M-10-9 1SNA235615R0000
			Top mounting	Side mounting
Type	Pitch (mm)	Pitch (inch)		
C2.5/5...	5	0.197	●	●
C2.5/6...	6	0.236	●	●
C4/6...	6	0.236	●	●
C4/8...	8	0.315	●	●
C6/8...	8	0.315	●	●
C10/10...	10	0.394	●	○
C16/12...	12	0.472	●	○

- Recommended
- Possible

CONNECT WITH US

We make it easy to connect with our experts and are ready to provide all the support you need. Visit www.te.com/support to chat with a Product Information Specialist.

te.com

© 2023 TE Connectivity. All Rights Reserved.

TE, TE Connectivity, TE connectivity (logo), and EVERY CONNECTION COUNTS are trademarks owned or licensed by the

TE Connectivity Ltd. family of companies. Other product names, logos, and company names mentioned herein may be trademarks of their respective owners.

While TE has made every reasonable effort to ensure the accuracy of the information in this document, TE does not guarantee that it is error-free, nor does TE make any other representation, warranty or guarantee that the information is accurate, correct, reliable or current. TE reserves the right to make any changes to the information contained herein without prior notice.

TE assumes only those obligations set forth in the terms and conditions for this product and shall in no event be liable for any incidental, indirect, or consequential damages arising out of the sale, resale, use, or misapplication of the product. TE expressly disclaims any implied warranties with respect to the information contained herein, including, but not limited to, implied warranties of merchantability or fitness for a particular purpose.

Dimensions, specifications and/or information contained herein are for reference purposes only and are subject to change without notice. Consult TE for the latest dimensions, specifications and/or information. Users of TE products must make their own assessment as to whether the respective product is suitable for the respective desired application

BROCHURE

TE Connectivity

3, rue Jean Perrin
69680 Chassieu cedex
France