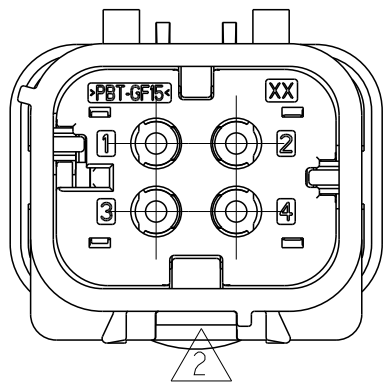
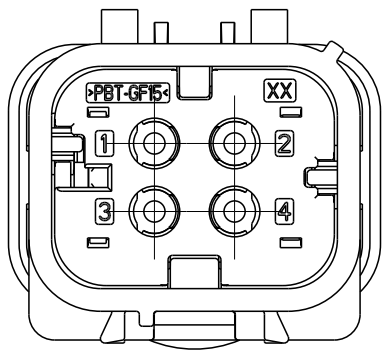


REVISIONS					
P	LTR	DESCRIPTION	DATE	DWN	APVD
	A	RELEASE PER ECO-20-015428	29OCT2020	DFS	JB

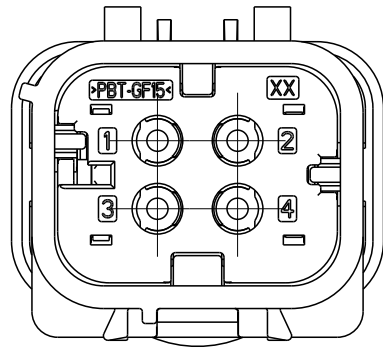
D



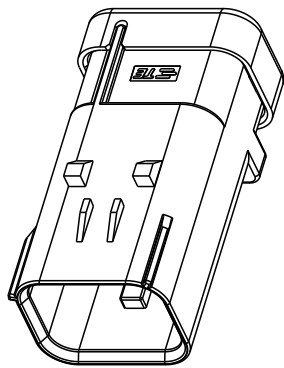
2338211-2  
SCALE 2:1



2338211-3  
SCALE 2:1



2338211-4  
SCALE 2:1



ISOMETRIC VIEW SHOWN  
FOR REFERENCE ONLY  
SCALE 1:1

NOTES:

1. MATERIALS:

CAP HOUSING:  
GENERIC TYPE = 15% GF PBT  
COLOR = SEE TABLE

CAP TPA:  
GENERIC TYPE = 15% GF PBT  
COLOR = BLACK

CAP COVER:  
GENERIC TYPE = 15% GF PBT  
COLOR = BLACK

WIRE SEAL:  
GENERIC TYPE = SILICONE RUBBER  
COLOR = GREEN

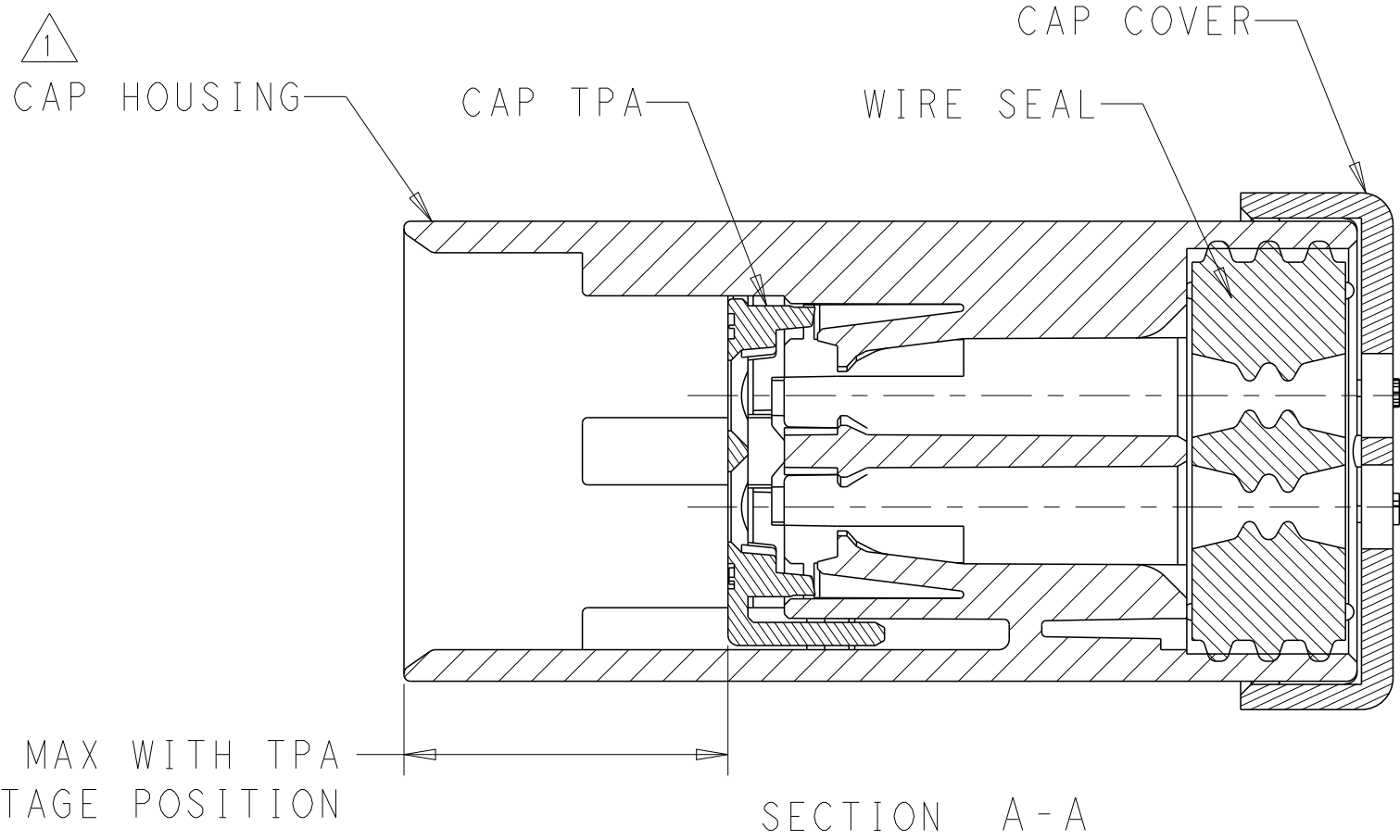
2. NOT TOOLED FOR PRODUCTION.

3. TPA SHOWN IN THE PRE-STAGED (AS SHIPPED) POSITION.

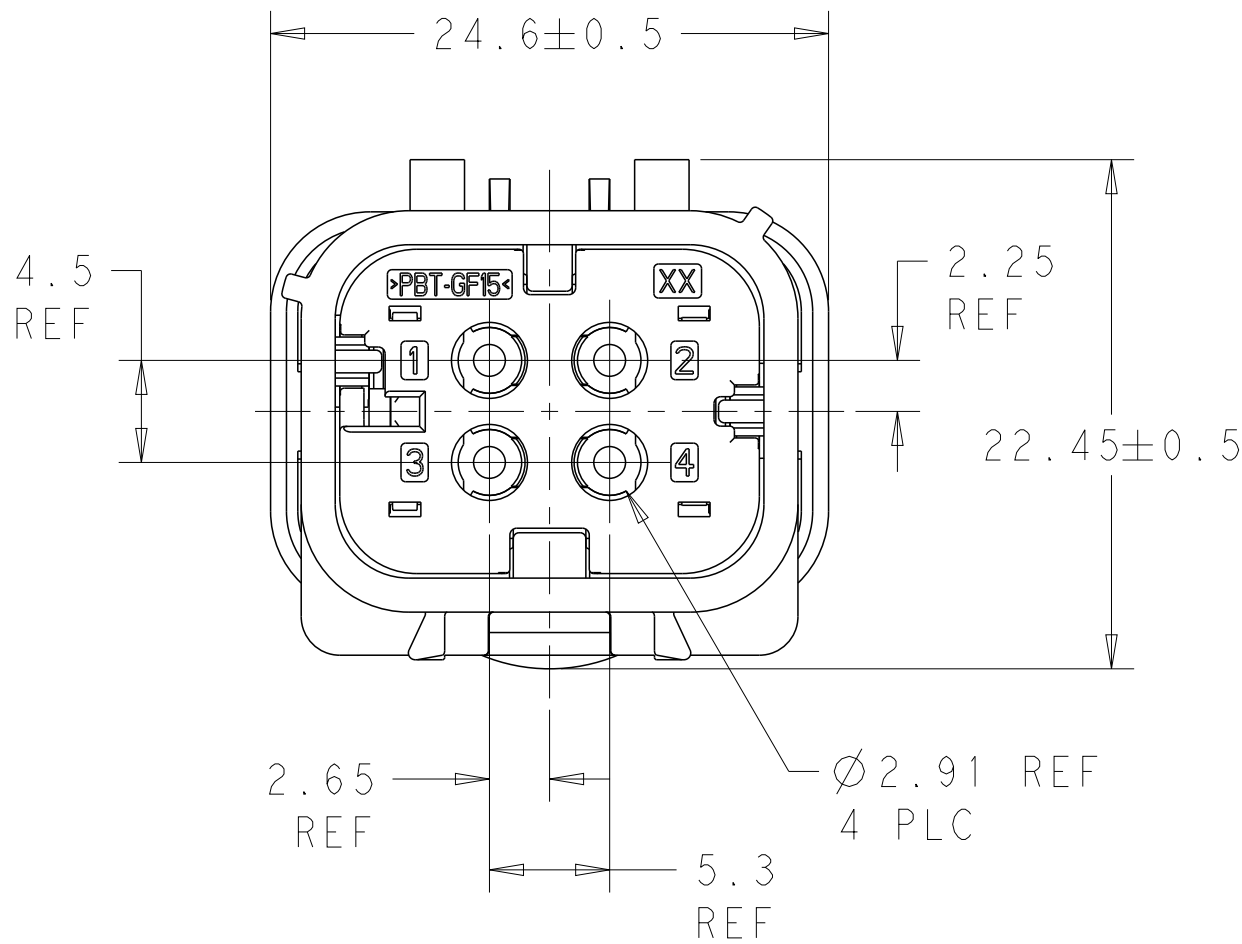
4. MATTE SEAL TO ACCOMODATE WIRE INSULATION O.D. RANGE OF 2.18MM TO 3.81MM

5. REFER TO AS16 COAX PRODUCT GROUP DRAWING: 2381263 FOR INFORMATION REGARDING MATING COMPONENTS, ACCESSORIES, AND APPLICATION TOOLING.

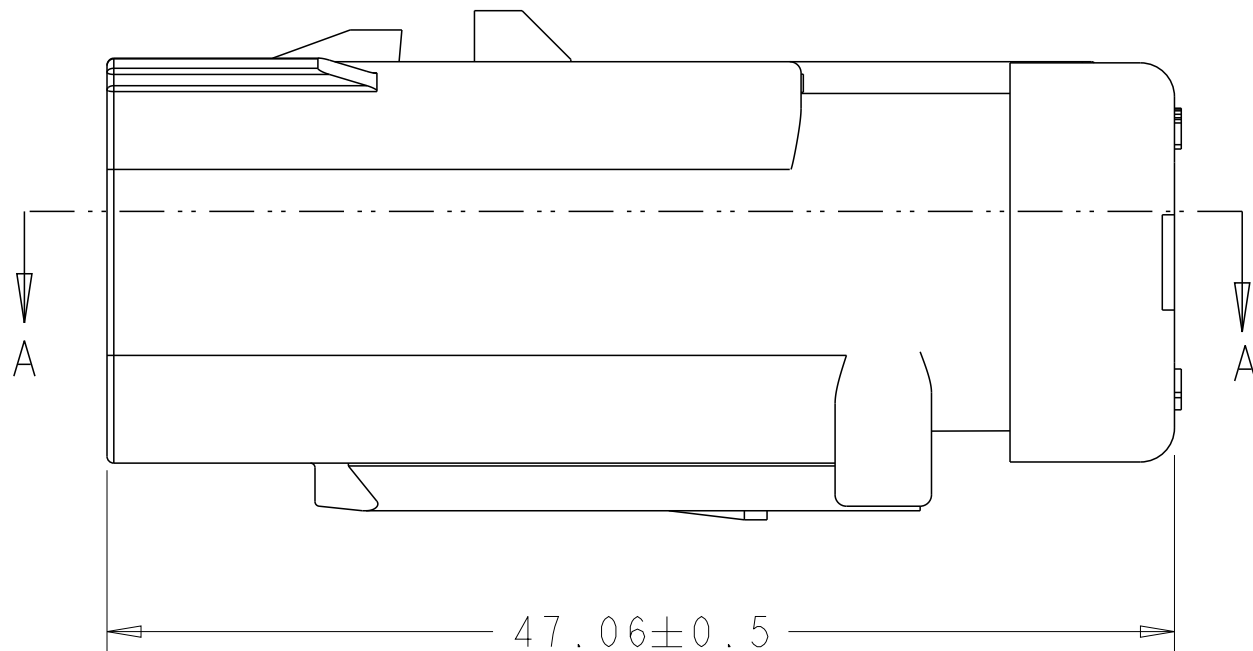
C



SECTION A-A





2338211-1 AS SHOWN



B

A

BEIGE	2338211-4
SIGNAL BLUE	2338211-3
CLARET VIOLET	2338211-2
WATER BLUE	2338211-1
HOUSING COLOR	PART NUMBER

THIS DRAWING IS A CONTROLLED DOCUMENT.		DWN J. LOCONDRO CHK K.A. DEBOCK APVD J. BARTH	02-Nov-20 14FEB2019 29OCT2020	 TE Connectivity			
DIMENSIONS: mm		<div>TOLERANCES UNLESS OTHERWISE SPECIFIED:</div> <div><div>0 PLC ± 1 PLC ± 2 PLC ± 3 PLC ± 4 PLC ± ANGLES ±</div><div>±</div></div>		NAME CAP PIN ASSY, 4P, W2W, SEALED COAX AS16 COAX -			
							
MATERIAL - SEE NOTES		PRODUCT SPEC 108-94799 APPLICATION SPEC 114-94667 WEIGHT 12.9 g		SIZE A2	CAGE CODE -	DRAWING NO C-2338211-C	RESTRICTED TO -
CUSTOMER DRAWING				SCALE 3:1	SHEET 1 OF 1	REV A	

# Mouser Electronics

Authorized Distributor

Click to View Pricing, Inventory, Delivery & Lifecycle Information:

[TE Connectivity:](#)

[2338211-1](#)